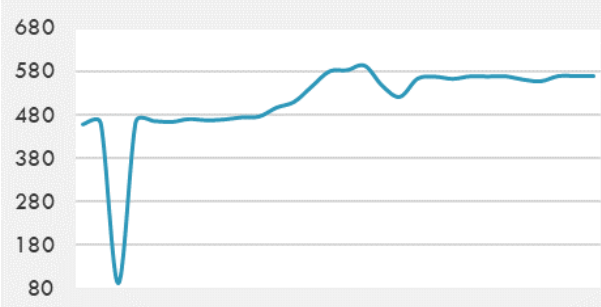
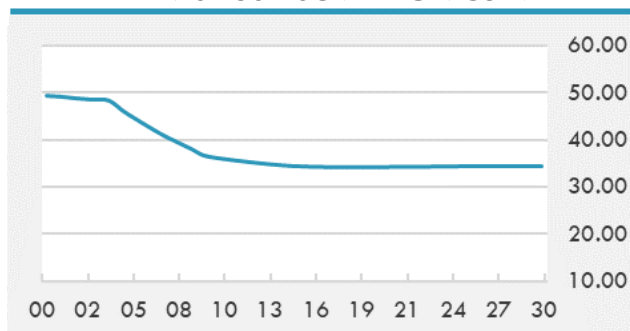


BEIRUT STOCK EXCHANGE

	Last	Daily %	YTD %	Dividend %
MSCI Lebanon	569.49	0.00%	30.10%	
Development and Reconstruction				
Solidere A	24	0.00%	29.73%	
Solidere B	24	0.00%	31.22%	
Banking				
Audi Listed	2.74	2.62%	124.59%	
BLC Listed	0.93	0.00%	0.00%	
BOB Listed	17.8	0.00%	0.00%	
Byblos Listed	0.75	7.14%	41.51%	
BEMO Listed	1.2	0.00%	0.00%	
BLOM Listed	3.6	0.00%	73.91%	
Trading				
RYMCO	3.19	0.00%	0.00%	
Industrial				
Holcim	15	0.00%	3.45%	
Ciments Blancs	5.2	0.00%	26.83%	

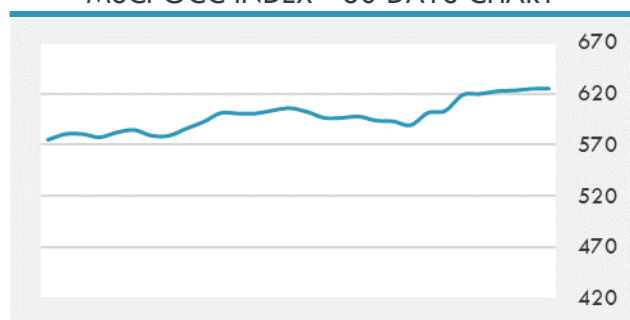
MSCI LEBANON INDEX - 30 DAYS CHART

LEBANESE USD SOVEREIGN CURVE


- The Association of Banks in Lebanon Thursday brushed off claims that the lenders were partly responsible for the country's economic and financial woes, stressing that the successive governments failed to implement the required reforms.
- The Saudi Stock Exchange's main index TASI closed Thursday on a marginal decline of 0.02% or 2.17 points at 10,012.13 points.
- The UAE has been placed in the fourth position among the countries investing in Africa in terms of the number of projects, according to the new "Africa Horizons 2021/2022" report.

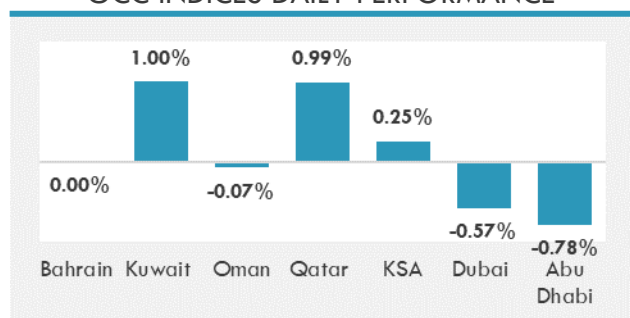
Source: Daily Star, Gulf Business, Mubasher, Bloomberg, Businessnews LB

GCC EQUITY INDICES

	Last Price	Daily %	YTD %
Bahrain	1454.21	0.00%	-2.39%
Kuwait	5926.08	1.00%	6.85%
Oman	3714.49	-0.07%	1.37%
Qatar	10498.33	0.99%	1.01%
KSA	10014.3	0.25%	15.22%
Dubai	2559.36	-0.57%	3.65%
Abu Dhabi	6033.14	-0.78%	20.09%

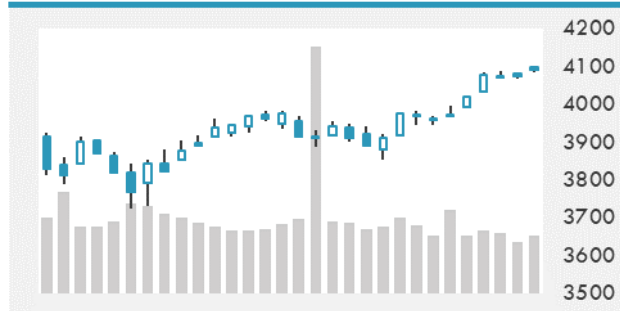
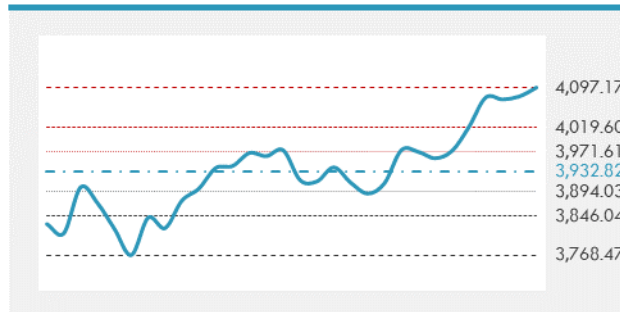
MSCI GCC INDEX - 30 DAYS CHART

LOCAL/GCC FOREIGN EXCHANGE

	Cross	Last Price
Lebanese Pound Spot	USD/LBP	1515.5
Bahraini Dinar Spot	USD/BHD	0.37701
Kuwaiti Dinar Spot	USD/KWD	0.302
Omani Rial Spot	USD/OMR	0.38499
Qatari Riyal Spot	USD/QAR	3.6417
Saudi Riyal Spot	USD/SAR	3.7503
UAE Dirham Spot	USD/AED	3.673

GCC INDICES DAILY PERFORMANCE


UNITED STATES EQUITY MARKET INDICES

	Last Price	Daily %	YTD %	Δ10D Vol
Major Indices				
Dow Jones	33503.57	0.00%	9.47%	-0.10%
S&P 500	4097.17	0.00%	9.08%	0.01%
Nasdaq	13829.31	0.00%	7.30%	-0.17%
Sectors Indices				
Discretionary	1395.27	0.00%	7.12%	0.04%
Staples	708.25	0.00%	1.71%	-0.39%
Energy	366.17	0.00%	27.97%	0.94%
Financials	578.91	0.00%	18.04%	-1.25%
Healthcare	1359.72	0.00%	2.70%	-0.01%
Industrials	841.63	0.00%	12.29%	-1.63%
IT	2466.55	0.00%	7.65%	-0.37%
Materials	498.5	0.00%	9.39%	-0.98%
Com. Services	251.53	0.00%	13.34%	-0.45%
Utilities	329.73	0.00%	3.34%	-0.34%
Real Estate	251.81	0.00%	10.49%	0.87%

S&P 500 INDEX - 30 DAYS CHART

S&P 500 SUPPORT & RESISTANCE


- U.S. index futures gain after the Federal Reserve indicated it will maintain its commitment to supportive policy.
- European equities rose to a fresh record on Thursday as investors focused on the Federal Reserve's commitment to loose monetary policy, while the accelerating progress in the continent's vaccinations boosted expectations of a rapid economic recovery.
- Asian stocks edged lower as benchmark gauges in China led declines, spooked by the fastest Chinese producer price inflation since July 2018.

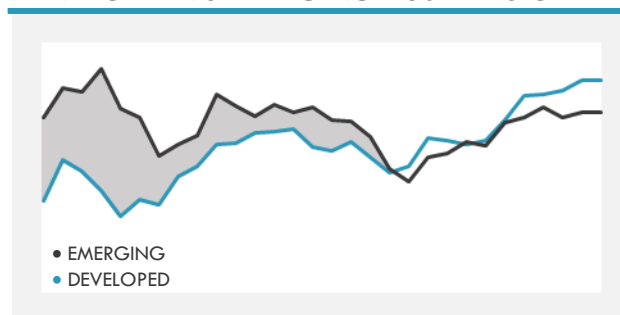
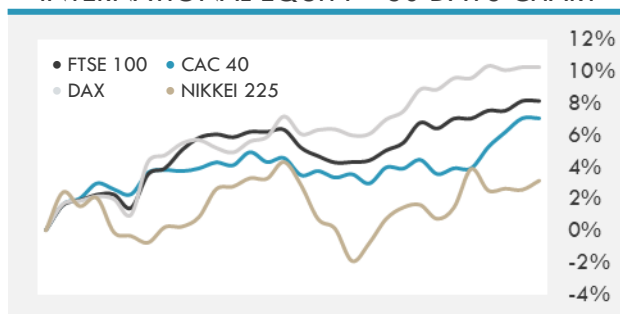
INTERNATIONAL MARKETS INDICES

	Last Price	Daily %	YTD %	Δ10D Vol
World	1691.51	0.00%	7.16%	-2.25%
Developed	2895.61	0.00%	7.64%	-2.09%
Emerging	1343.36	0.00%	4.03%	-1.92%
Frontier	2495.72	0.00%	-3.71%	0.01%
Europe	144.68	0.00%	9.52%	-0.76%
Latin America	2372.12	0.00%	-3.25%	-0.01%
Asia Pacific	207.55	0.00%	3.82%	-2.26%

INTERNATIONAL EQUITY INDICES

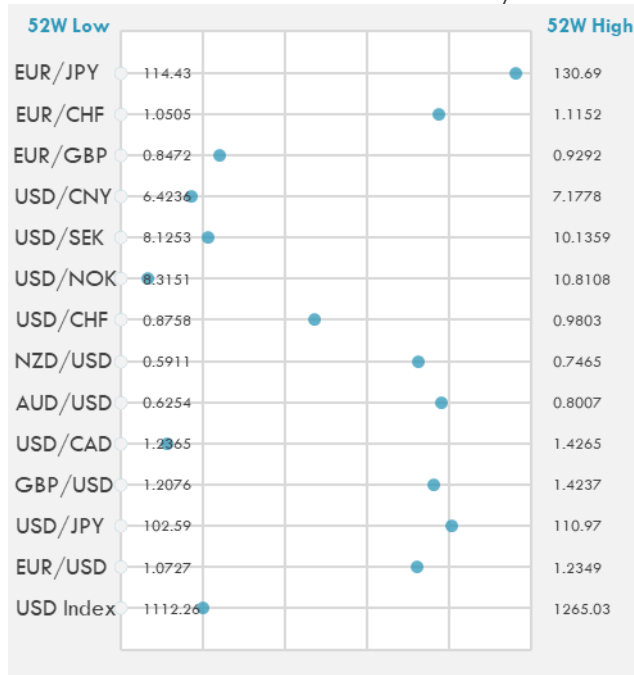
	Last Price	Daily %	YTD %	Δ10D Vol
EuroStoxx 50	3977.83	0.00%	11.97%	-0.09%
FTSE 100	6942.22	0.00%	7.46%	0.30%
CAC 40	6165.72	0.00%	11.07%	-0.17%
DAX	15202.68	0.00%	10.82%	-1.04%
Swiss SMI	11206.88	0.00%	4.70%	0.46%
Nikkei 225	29875.97	0.56%	8.86%	-1.55%
CSI 300	5042.67	-1.36%	-3.24%	-0.14%

Source: Bloomberg, Financial Times, Reuters

DEVELOPED VS EMERGING - 30 DAYS CHART

INTERNATIONAL EQUITY - 30 DAYS CHART


FOREIGN EXCHANGE MARKET

	Last Price	Daily %	Δ10D	Vol 25	ΔRR
Major USD Cross Rate					
USD Index	1142.72	0.14%	0.08%	-	
EUR/USD	1.1898	-0.13%	-0.21%	0.153	
USD/JPY	109.34	0.07%	-0.07%	-0.323	
GBP/USD	1.3725	-0.07%	-0.07%	-0.408	
USD/CAD	1.2581	0.15%	0.03%	0.345	
AUD/USD	0.7624	-0.38%	0.35%	-0.568	
NZD/USD	0.7038	-0.26%	0.26%	-0.670	
USD/CHF	0.9251	0.05%	0.05%	-0.015	
USD/NOK	8.4764	0.21%	0.54%	1.105	
USD/SEK	8.5561	0.18%	-1.10%	0.533	
USD/CNY	6.5533	0.03%	-0.96%	0.675	
Major EUR Cross Rate					
EUR/GBP	0.86688	-0.07%	0.03%	0.460	
EUR/CHF	1.10064	-0.08%	-0.17%	0.258	
EUR/JPY	130.09	-0.07%	-0.09%	-0.505	

DISTANCE FROM 52 WEEKS LOW/HIGH


- Australia's dollar slides against the greenback, driven in part by iron ore which fell for the first day in the last seven.
- A gauge of the dollar is set for its biggest weekly loss this year after the U.S. Federal Reserve reassured investors of its commitment to supportive monetary policy.
- China's yuan is poised for its first weekly advance since February as the dollar inches lower. Upbeat factory data also supported the Chinese currency.

Source: Bloomberg, Financial Times, Reuters

EUR/USD 30 DAYS SUPPORT & RESISTANCE

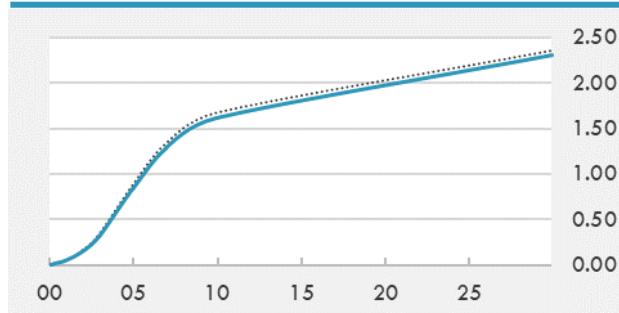
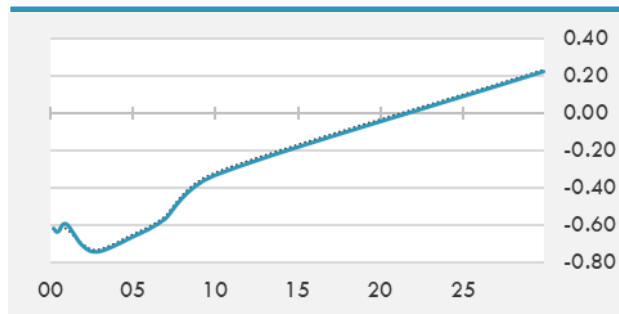
GBP/USD 30 DAYS SUPPORT & RESISTANCE

USD/JPY 30 DAYS SUPPORT & RESISTANCE

USD/CAD 30 DAYS SUPPORT & RESISTANCE


GLOBAL BOND INDICES

	Yield	ΔYield (in Bps)
Benchmark Indices		
US 10 Years Benchmark	1.6192	-0.055
EU 10 Years Benchmark	-0.336	-0.012
UK 10 Years Benchmark	0.749	-0.024
Sovereign Bonds		
US Treasury Bond	0.594	0
Eurozone Sovereign Bond	-0.428	0
Japan Sovereign Bond	-0.104	0
Corporate Bonds		
US Corporate TR	2.196	-0.033
US High Yield Bond TR	3.990	-0.011
EUR Aggregate Corporate TR	0.298	-0.009
EUR High Yield TR	3.070	-0.046
USD Emerging Market IG & HY	3.936	-0.015

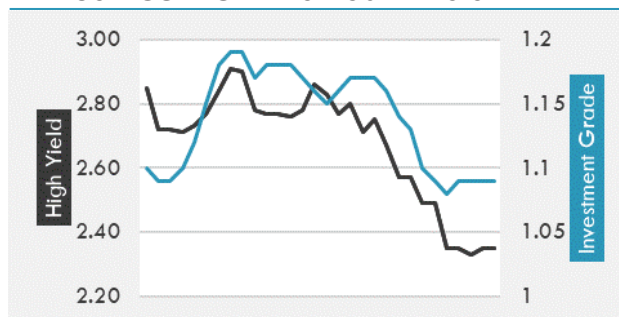
US TREASURIES YIELD CURVE

EUR GENERIC YIELD CURVE


- Treasuries decline as a jump in China's producer prices rekindled concern about increasing inflationary pressures around the world. Japan's bond volatility drops to the lowest level in more than two months.
- Italian bonds trim gains, but still outperform all euro-area peers except Greece. Italy announces auction bonds for April 13 after Thursday's close.
- Gilts pare their bull flattening move as the focus turns to next week's long-end bond auction and 30-year debt syndication in the final week of the month.

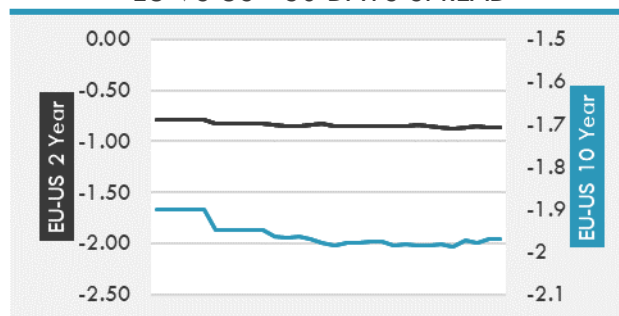
Source: Bloomberg, Financial Times, Economic times, Reuters

OVERNIGHT RATES - SWAPS

	Yield	ΔYield (in Bps)
3M USD LIBOR	0.194	0.000
3M EUR EURIBOR	-0.543	0.000
3M GBP LIBOR	0.085	0.000
3Y USD SWAP	0.470	-0.024
5Y USD SWAP	0.951	-0.043
10Y USD SWAP	1.646	-0.061
30Y USD SWAP	2.072	-0.056

USD CORPORATES - 30 DAYS SPREAD

FIXED INCOME SPREADS

	Spread	ΔSpread (in Bps)
USD 3M vs 10Y Spread	1.606	-0.052
USD 2Y vs 10Y Spread	1.468	-0.051
USD IG Spread	1.090	0.000
USD HY Spread	2.350	0.020
EU vs US 10Y Spread	-1.955	0.043
EU vs US 2Y Spread	-0.863	-0.007
EM vs Benchmark Spread	265.000	0.000

EU VS US - 30 DAYS SPREAD


GLOBAL COMMODITIES MARKET

	Last Price	Daily %
Commodity Index	84.16	-0.28%

Energy

WTI Crude Future	59.55	-0.08%
Brent Crude Future	63.09	-0.17%
NYMEX Gasoline	195.35	-0.30%
NYMEX Heat Oil	180.23	-0.41%
ICE Gasoil	503.5	0.60%
NYMEX Natural Gas	2.518	-0.16%

Precious Metals

Gold Spot \$/Oz	1750.24	-0.32%
Silver Spot \$/Oz	25.3255	-0.52%
Platinum Spot \$/Oz	1223.24	-0.75%
Palladium Spot \$/Oz	2629.1	-0.13%
Gold Future	1750.7	-0.43%
Silver Future	25.365	-0.86%
Platinum Future	1225.2	-0.83%
Palladium Future	2618	-0.39%

Base Metals

LME Aluminum	2283	0.00%
LME Copper	9008	0.00%
LME Zinc	2855	0.00%
LME Nickel	16828	0.00%
LME Lead	1983	0.00%
LME Tin	25795	0.00%

Agricultural

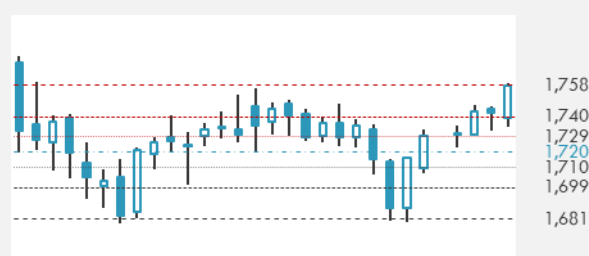
Corn CBT	578	-0.30%
Wheat CBT	627.75	-0.16%
Soybeans CBT	1409	-0.44%
Bean Meal CBT	405.9	-0.22%
Rough Rice CBT	13.075	-0.27%
MDE Palm Oil	3864	1.93%
Soybean CBT	51.23	-0.35%
Coffee ICE	127.85	0.00%
Sugar #11 ICE	15.18	0.00%
Cotton #2 ICE	81.18	0.07%
Cocoa ICE	2384	0.00%
Ethanol CME	1.905	0.00%
Lumber CME	1106.4	0.00%
Orange Juice ICE	109.3	0.00%
Live Cattle CME	125.025	0.00%
Feeder Cattle CME	151.6	0.00%
Lean Hogs CME	108.7	0.00%

COMMODITY INDEX SUPPORT & RESISTANCE

WTI OIL 30 DAYS SUPPORT & RESISTANCE


- Saudi Arabia remains confident that an OPEC+ agreement to increase oil production over the next three months was the right move, said its energy minister.
- Gold headed for the first weekly advance in three as investors weighed Federal Reserve Chair Jerome Powell's comments on growth and inflation.

Source: Bloomberg, Reuters

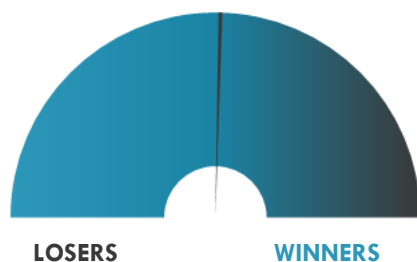
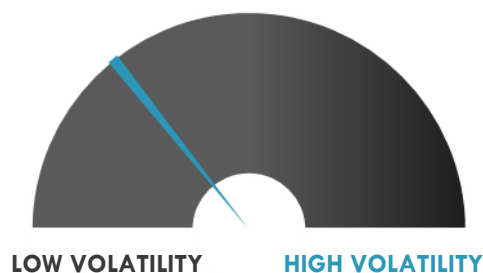
GOLD 30 DAYS SUPPORT & RESISTANCE

SILVER 30 DAYS SUPPORT & RESISTANCE


TOP 10 WINNERS

	Ticker	Last Price	Daily %
S&P 500 Stocks			
Etsy Inc	ETSY	215.39	+5.57%
IPG Photonics Corp	IPGP	231.17	+5.11%
Penn National Gaming	PENN	106.69	+4.22%
Align Technology Inc	ALGN	575.75	+4.20%
Caesars Entertainment	CZR	96.15	+3.84%
Zebra Technologies	ZBRA	502.9	+3.62%
PayPal Holdings Inc	PYPL	264.5	+3.48%
Ross Stores Inc	ROST	127.45	+3.27%
Twitter Inc	TWTR	71.22	+3.23%
ABIOMED Inc	ABMD	329.75	+2.85%

TOP 10 LOSERS

	Ticker	Last Price	Daily %
S&P 500 Stocks			
Constellation Brands Inc	STZ	224.21	-4.57%
Lumen Technologies Inc	LUMN	12.91	-4.23%
ViacomCBS Inc	VIAC	42.29	-3.65%
Discovery Inc	DISCA	41.88	-3.48%
Cabot Oil & Gas Corp	COG	17.85	-3.41%
Baker Hughes Co	BKR	20.71	-3.36%
Discovery Inc	DISCK	35.78	-3.30%
AT&T Inc	T	30	-3.01%
HollyFrontier Corp	HFC	35.85	-2.71%
Pioneer Natural Res.	PXD	149.49	-2.63%

S&P 500 DISTRIBUTION

S&P VOLATILITY INDEX


- Greenland Minerals shares have been slashed by more than half in the two days following a parliamentary victory for a left-wing party that has opposed the minerals explorer's rare earth mining project.
- Medalist Diversified REIT announces prices offering of 8M shares of its common stock at a price of \$1.50/share, for gross proceeds of ~\$12M.
- Although it announced it would acquire Supreme Cannabis this morning for ~\$435M, Canopy Growth closed the trading day down 4.8% to \$28.50. Jefferies analyst Owen Bennett, who has an underperform rating on shares, says the acquisition isn't that transformational for the company though it will help it with cost savings.
- Columbia Property Trust gained 1.2% in after hours trading after the company said it has started a strategic review. There's no deadline or definitive timetable set for completion of the review and there is no assurance that this process will result in any transaction, including the company's sale, privatization, or entry into a business combination, according to a statement.
- Vascular Biogenics announces that it intends to offer and sell ordinary shares and pre-funded warrants to purchase shares in an underwritten public offering.
- Good Times Restaurants reports 22.9% Y/Y growth in Q2 same store sales for its Good Times Burgers & Frozen Custard brand.
- Sunworks subsidiary to acquire Solcius, a privately held, rapidly growing residential solar company for \$51.8M on a cash-free and debt-free basis, in an all-cash transaction.

KEY ECONOMIC INDICATORS

Country	Event	Surv (M)	Actual	Prior	Time
Canada	Unemployment Rate	8.00%	--	8.20%	15:30
Canada	Net Change in Employment	100000	--	259200	15:30
China	CPI YoY	0.30%	0.40%	-0.20%	4:30
China	PPI YoY	3.60%	4.40%	1.70%	4:30
China	Money Supply M2 YoY	9.50%	--	10.10%	
China	New Yuan Loans CNY	2.30E+12	--	1.36E+12	
Finland	Industrial Production MoM	--	3.40%	1.00%	8:00
France	Industrial Production MoM	0.50%	--	3.30%	9:45
France	Industrial Production YoY	-1.20%	--	-0.20%	9:45
Germany	Industrial Production SA MoM	1.50%	--	-2.50%	9:00
Greece	Industrial Production YoY	--	--	3.40%	12:00
Greece	CPI YoY	--	--	-1.30%	12:00
Italy	Retail Sales MoM	2.00%	--	-3.00%	11:00
Italy	Retail Sales YoY	-6.00%	--	-6.80%	11:00
Latvia	Unemployment Rate	--	--	8.20%	
Latvia	CPI YoY	--	--	-0.20%	13:00
Lithuania	CPI YoY	--	--	0.60%	9:00
Lithuania	CPI MoM	--	--	0.20%	9:00
United States	PPI Final Demand MoM	0.50%	--	0.50%	15:30
United States	Wholesale Inventories MoM	0.50%	--	0.50%	17:00

Source: Bloomberg

Banque BEMO sal

Head Office - Private and Corporate Banking

Elias Sarkis Ave., Bemo Bldg , Ashrafieh - Lebanon
Tel: +961 1 200 505 Fax: +961 1 217 860

Research & Development research@bemobank.com

Elias Sarkis Ave., Bemo Bldg , Ashrafieh - Lebanon
Tel: +961 1 200 505 Fax: +961 1 217 860

Disclaimer:

This report is published for information purposes only. The information herein has been compiled from, or based upon sources considered to be reliable (Bloomberg, SeekingAlpha, DailyStar...), but we do not guarantee or assume responsibility for its completeness and accuracy. This document should not be construed as a solicitation to take part in any investment, or as constituting any representation or warranty on our part. This report is not to be relied upon in substitution for the exercise of specialists.

We may not have taken any steps to ensure that the securities referred to in this report are suitable for any particular investor. The investments and services contained or referred to herein are not purported to be exhaustive, any person considering an investment should seek specialist advice on the suitability of an investment.

Nothing in this report constitutes investment, legal, accounting or tax advice, or a representation that any investment or strategy is suitable or appropriate to your individual circumstances, or otherwise constitutes a personal recommendation. Clients understand that it is their responsibility to seek legal and/or tax advice regarding the legal and tax consequences of their investment transactions. The consequences of any action taken on the basis of information contained herein are solely the responsibility of the recipient.

Investment instruments are subject to risk, including possible loss of principal amount invested. Past performance should not be taken as an indication or guarantee of future performance, and no representation or warranty, express or implied, is made regarding future performance. The value of securities and financial instruments is subject to exchange rate fluctuation that may have a positive or adverse effect on the price or income of such securities or financial instruments. Some investments mentioned in this report may have a high level of volatility. High volatility investments may experience sudden and large falls in their value causing losses when that investment is realized. Some investments may not be readily realizable and it may be difficult to sell or realize those investments, similarly it may prove difficult to obtain reliable information about the value, or risks, to which such an investment is exposed.

This report may provide the addresses of websites or references. We have not reviewed any such site and takes no responsibility for the content contained therein. Such address or reference is provided solely for convenience and information. Accessing such website through this report shall be at the recipients own risk.