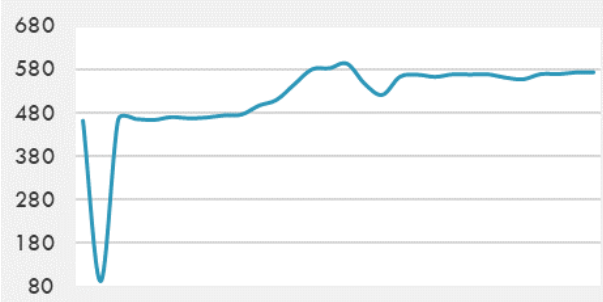
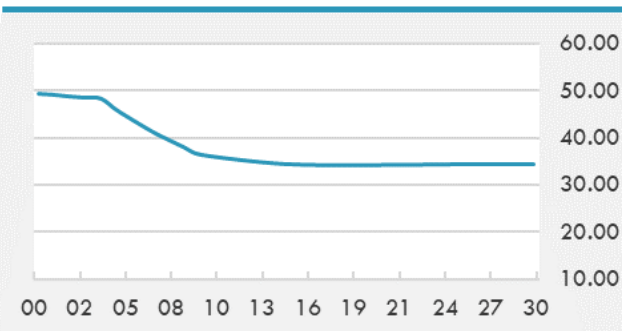


BEIRUT STOCK EXCHANGE

	Last	Daily %	YTD %	Dividend %
MSCI Lebanon	573.33	0.67%	30.98%	
Development and Reconstruction				
Solidere A	24.05	0.21%	30.00%	
Solidere B	24.5	2.08%	33.95%	
Banking				
Audi Listed	2.73	-0.36%	123.77%	
BLC Listed	0.93	0.00%	0.00%	
BOB Listed	17.8	0.00%	0.00%	
Byblos Listed	0.7	-6.67%	32.08%	
BEMO Listed	1.2	0.00%	0.00%	
BLOM Listed	3.6	0.00%	73.91%	
Trading				
RYMCO	3.19	0.00%	0.00%	
Industrial				
Holcim	15	0.00%	3.45%	
Ciments Blancs	5.2	0.00%	26.83%	

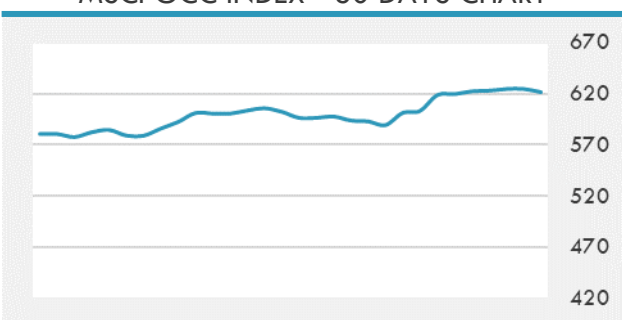
MSCI LEBANON INDEX - 30 DAYS CHART

LEBANESE USD SOVEREIGN CURVE


- The Central Bank said it handed over a list of information requested by Alvarez & Marsal to the Finance Ministry so it can be passed on to the forensic auditing company, a statement by BDL said Friday.
- The Saudi Ministry of Finance initiated an e-portal for individual services through a mobile application, the Saudi Press Agency reported on Sunday.
- AlAhli Takaful Company and Arabian Shield Cooperative Insurance both signed an MoU for a potential merger between the two entities, according to two separate disclosures on Sunday.

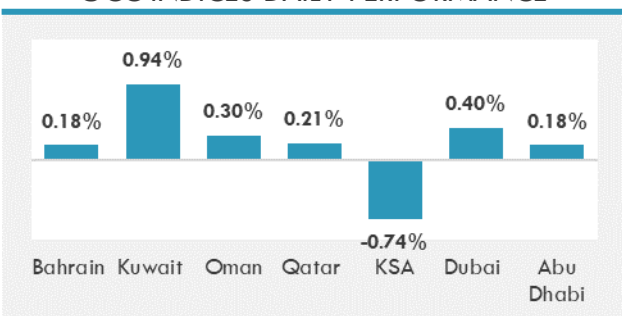
Source: Daily Star, Gulf Business, Mubasher, Bloomberg, Businessnews LB

GCC EQUITY INDICES

	Last Price	Daily %	YTD %
Bahrain	1454.21	0.18%	-2.21%
Kuwait	5926.08	0.94%	7.86%
Oman	3720.08	0.30%	1.68%
Qatar	10563.54	0.21%	1.22%
KSA	9938.32	-0.74%	14.37%
Dubai	2593.22	0.40%	4.06%
Abu Dhabi	6070.1	0.18%	20.31%

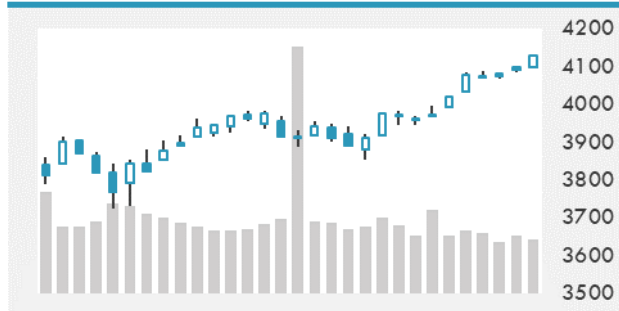
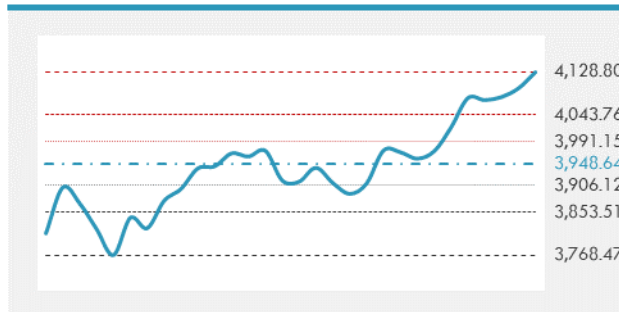
MSCI GCC INDEX - 30 DAYS CHART

LOCAL/GCC FOREIGN EXCHANGE

	Cross	Last Price
Lebanese Pound Spot	USD/LBP	1515.5
Bahraini Dinar Spot	USD/BHD	0.37701
Kuwaiti Dinar Spot	USD/KWD	0.302
Omani Rial Spot	USD/OMR	0.385
Qatari Riyal Spot	USD/QAR	3.6417
Saudi Riyal Spot	USD/SAR	3.7502
UAE Dirham Spot	USD/AED	3.673

GCC INDICES DAILY PERFORMANCE


UNITED STATES EQUITY MARKET INDICES

	Last Price	Daily %	YTD %	Δ10D Vol
Major Indices				
Dow Jones	33800.6	0.00%	10.44%	-1.53%
S&P 500	4128.8	0.00%	9.92%	-1.98%
Nasdaq	13900.19	0.00%	7.85%	-0.33%
Sectors Indices				
Discretionary	1411.45	0.00%	8.36%	0.28%
Staples	707.92	0.00%	1.67%	-2.99%
Energy	364.35	0.00%	27.33%	-5.40%
Financials	583.88	0.00%	19.05%	-2.01%
Healthcare	1375.56	0.00%	3.89%	-3.25%
Industrials	849.97	0.00%	13.40%	-2.51%
IT	2490.99	0.00%	8.72%	-2.34%
Materials	502.64	0.00%	10.30%	-4.70%
Com. Services	251.95	0.00%	13.53%	-0.87%
Utilities	329.5	0.00%	3.27%	0.14%
Real Estate	252.17	0.00%	10.65%	-5.76%

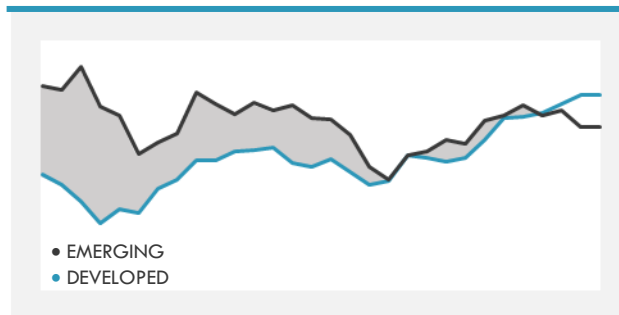
S&P 500 INDEX - 30 DAYS CHART

S&P 500 SUPPORT & RESISTANCE


- Future contracts on three major U.S. equity indexes fluctuated as investors assess economic growth prospects against inflation concerns.
- European equities edged up to a fresh record, as investors weighed prospects for recovery and awaited the earnings season.
- Asian stocks fell for a second day, with China and Hong Kong leading a broad decline in regional equities.

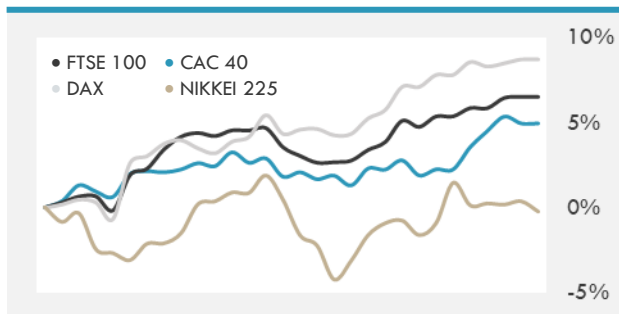
Source: Bloomberg, Financial Times, Reuters

INTERNATIONAL MARKETS INDICES

	Last Price	Daily %	YTD %	Δ10D Vol
World	1696.76	0.00%	7.49%	-0.41%
Developed	2910.1	0.00%	8.18%	-0.44%
Emerging	1330.36	0.00%	3.03%	2.25%
Frontier	2491.28	0.00%	-3.88%	-0.16%
Europe	144.8	0.00%	9.61%	0.06%
Latin America	2336.91	0.00%	-4.68%	2.51%
Asia Pacific	206.47	0.00%	3.28%	0.80%

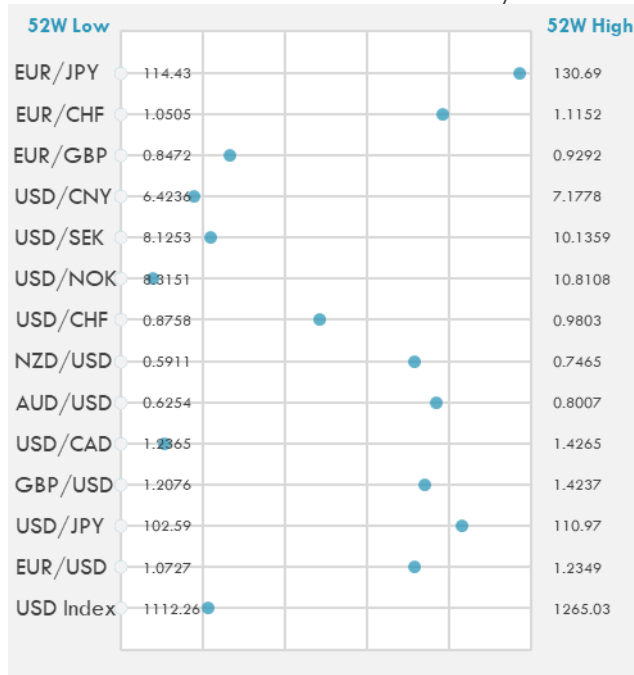
DEVELOPED VS EMERGING - 30 DAYS CHART

INTERNATIONAL EQUITY INDICES

	Last Price	Daily %	YTD %	Δ10D Vol
EuroStoxx 50	3978.84	0.00%	12.00%	-0.04%
FTSE 100	6915.75	0.00%	7.05%	-0.44%
CAC 40	6169.41	0.00%	11.13%	0.04%
DAX	15234.16	0.00%	11.05%	-0.17%
Swiss SMI	11238.52	0.00%	5.00%	-0.02%
Nikkei 225	29591.39	-0.59%	7.82%	-0.33%
CSI 300	4973.09	-1.24%	-4.57%	-1.22%

INTERNATIONAL EQUITY - 30 DAYS CHART


FOREIGN EXCHANGE MARKET

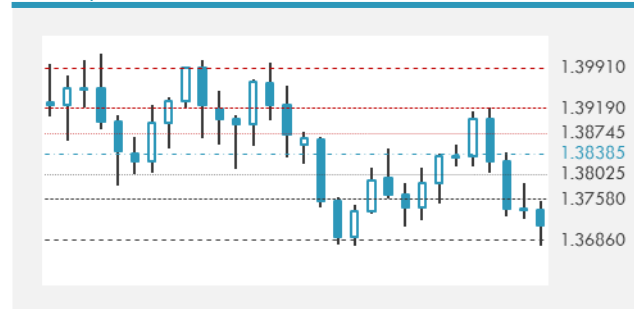
	Last Price	Daily %	Δ10D	Vol 25	ΔRR
Major USD Cross Rate					
USD Index	1144.65	0.18%	-0.02%	-	
EUR/USD	1.1887	-0.10%	-0.81%	0.140	
USD/JPY	109.57	-0.09%	-0.84%	-0.193	
GBP/USD	1.3679	-0.20%	0.03%	-0.398	
USD/CAD	1.2565	0.28%	-0.13%	0.318	
AUD/USD	0.7601	-0.29%	-0.33%	-0.503	
NZD/USD	0.7025	-0.11%	-0.18%	-0.553	
USD/CHF	0.9265	0.25%	-0.26%	-0.013	
USD/NOK	8.5115	0.17%	0.19%	1.140	
USD/SEK	8.5649	0.31%	-0.33%	0.518	
USD/CNY	6.5578	0.08%	0.05%	0.550	
Major EUR Cross Rate					
EUR/GBP	0.86895	0.07%	-0.44%	0.353	
EUR/CHF	1.10134	0.13%	0.16%	0.255	
EUR/JPY	130.24	-0.21%	0.45%	-0.440	

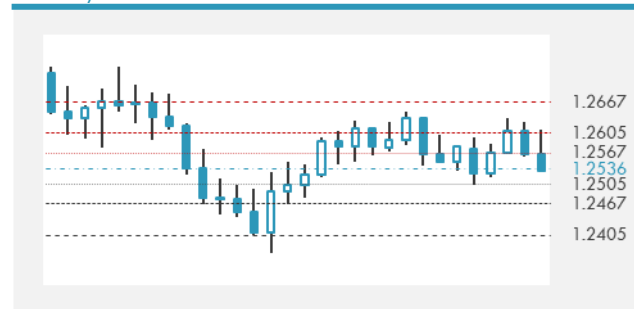
DISTANCE FROM 52 WEEKS LOW/HIGH


- The Australian dollar declined as the currency was sold against the greenback and yen amid weak risk sentiment.
- The dollar rose against most of its Group-of-10 peers as a decline in regional shares spurred risk-off sentiment.
- Yen faces downside risks from signs of inflationary pressures and higher yields in the U.S. Bonds will track Treasuries lower.

Source: Bloomberg, Financial Times, Reuters

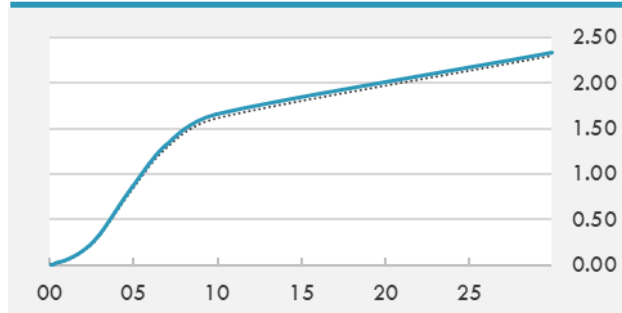
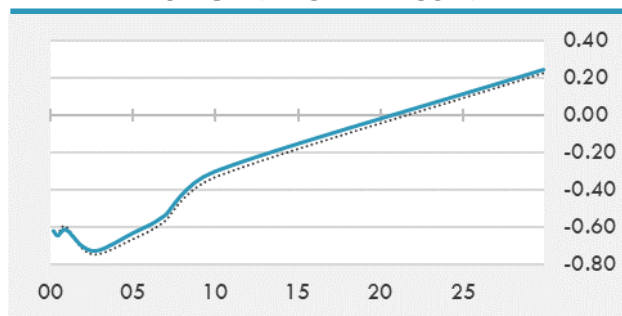
EUR/USD 30 DAYS SUPPORT & RESISTANCE

GBP/USD 30 DAYS SUPPORT & RESISTANCE

USD/JPY 30 DAYS SUPPORT & RESISTANCE

USD/CAD 30 DAYS SUPPORT & RESISTANCE


GLOBAL BOND INDICES

	Yield	ΔYield (in Bps)
Benchmark Indices		
US 10 Years Benchmark	1.6585	0.039
EU 10 Years Benchmark	-0.303	0.033
UK 10 Years Benchmark	0.774	0.025
Sovereign Bonds		
US Treasury Bond	0.594	0
Eurozone Sovereign Bond	-0.428	0
Japan Sovereign Bond	-0.104	0
Corporate Bonds		
US Corporate TR	2.212	0.016
US High Yield Bond TR	4.018	0.028
EUR Aggregate Corporate TR	0.323	0.025
EUR High Yield TR	3.081	0.011
USD Emerging Market IG & HY	3.949	0.012

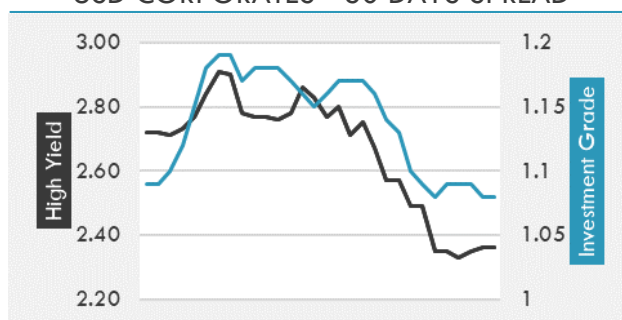
US TREASURIES YIELD CURVE

EUR GENERIC YIELD CURVE


- Treasuries began Asia trade on the back-foot given supply pressures with front-loaded bond sales in view.
- Aussie bonds were under early pressure before this week's new 2032 syndication. Supply-driven losses across major bond markets were erased as weakness in China tech stocks dragged risk sentiment.
- A market-based gauge of inflation expectations is climbing toward the ECB's close-to 2% goal, but Germany's benchmark yields remain unmoved as a result of aggressive bond purchases.

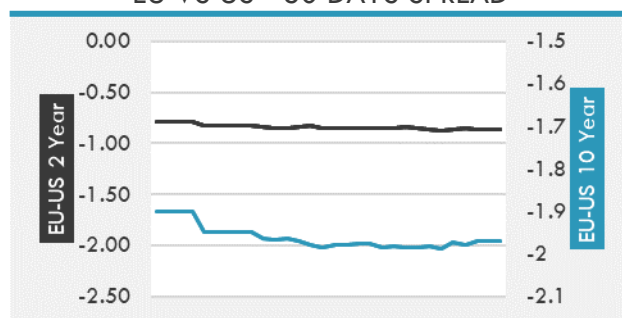
Source: Bloomberg, Financial Times, Economic times, Reuters

OVERNIGHT RATES - SWAPS

	Yield	ΔYield (in Bps)
3M USD LIBOR	0.188	0.000
3M EUR EURIBOR	-0.544	0.001
3M GBP LIBOR	0.086	0.001
3Y USD SWAP	0.485	0.015
5Y USD SWAP	0.976	0.025
10Y USD SWAP	1.688	0.042
30Y USD SWAP	2.114	0.042

USD CORPORATES - 30 DAYS SPREAD

FIXED INCOME SPREADS

	Spread	ΔSpread (in Bps)
USD 3M vs 10Y Spread	1.646	0.039
USD 2Y vs 10Y Spread	1.502	0.033
USD IG Spread	1.080	-0.010
USD HY Spread	2.360	0.010
EU vs US 10Y Spread	-1.962	-0.007
EU vs US 2Y Spread	-0.857	0.006
EM vs Benchmark Spread	266.600	-0.100

EU VS US - 30 DAYS SPREAD


GLOBAL COMMODITIES MARKET

	Last Price	Daily %
Commodity Index	83.68	-0.42%

Energy

WTI Crude Future	59.11	-0.35%
Brent Crude Future	62.81	-0.22%
NYMEX Gasoline	195.53	-0.35%
NYMEX Heat Oil	179.89	-0.48%
ICE Gasoil	505.25	0.30%
NYMEX Natural Gas	2.563	1.46%

Precious Metals

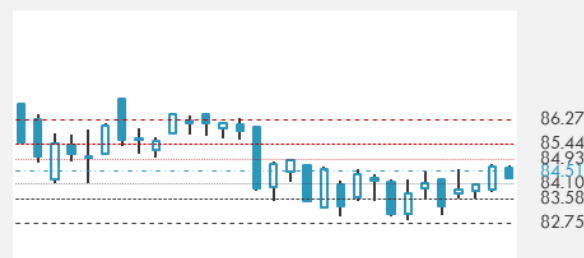
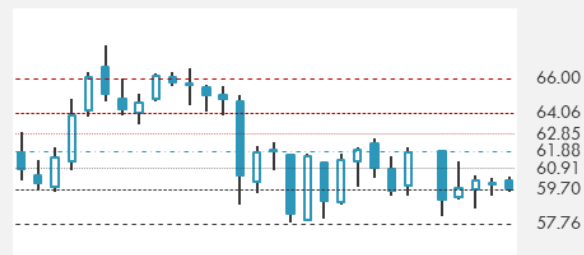
Gold Spot \$/Oz	1735.98	-0.45%
Silver Spot \$/Oz	25.0342	-0.92%
Platinum Spot \$/Oz	1192.73	-1.03%
Palladium Spot \$/Oz	2633.31	-0.40%
Gold Future	1736	-0.50%
Silver Future	25.08	-0.97%
Platinum Future	1193.6	-1.30%
Palladium Future	2630	-0.23%

Base Metals

LME Aluminum	2264	0.00%
LME Copper	8927	0.00%
LME Zinc	2830	0.00%
LME Nickel	16628	0.00%
LME Lead	1979	0.00%
LME Tin	25755	0.00%

Agricultural

Corn CBT	579.25	0.35%
Wheat CBT	634.25	-0.98%
Soybeans CBT	1394.25	-0.62%
Bean Meal CBT	405.4	-0.02%
Rough Rice CBT	13.09	0.00%
MDE Palm Oil	3726	-1.09%
Soybean CBT	50.14	-1.55%
Coffee ICE	127.25	0.00%
Sugar #11 ICE	15.41	0.00%
Cotton #2 ICE	81.25	-0.65%
Cocoa ICE	2387	0.00%
Ethanol CME	1.905	0.00%
Lumber CME	1125.5	0.00%
Orange Juice ICE	110.05	0.00%
Live Cattle CME	122.575	0.00%
Feeder Cattle CME	149.625	0.00%
Lean Hogs CME	108.95	0.00%

COMMODITY INDEX SUPPORT & RESISTANCE

WTI OIL 30 DAYS SUPPORT & RESISTANCE


- Saudi Arabia will supply all the crude oil that was requested by India's state-owned refiners and at least four other Asian customers next month as the linchpin producer starts to ramp up output.
- Gold drops for the second day as investors weigh Jerome Powell's growth outlook.

Source: Bloomberg, Reuters

GOLD 30 DAYS SUPPORT & RESISTANCE

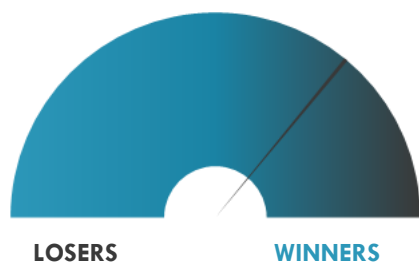
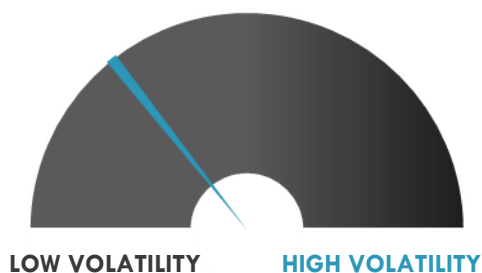
SILVER 30 DAYS SUPPORT & RESISTANCE


TOP 10 WINNERS

	Ticker	Last Price	Daily %
S&P 500 Stocks			
PVH Corp	PVH	110.5	+5.68%
Tapestry Inc	TPR	44.93	+3.60%
Cigna Corp	CI	246.1	+3.29%
Gap Inc/The	GPS	32.44	+3.28%
IPG Photonics Corp	IPGP	238.71	+3.26%
Honeywell International	HON	226.98	+3.24%
NVR Inc	NVR	4902.13	+3.24%
Ralph Lauren Corp	RL	127.54	+3.20%
Lennar Corp	LEN	105.52	+3.17%
UnitedHealth Group Inc	UNH	376.3	+3.13%

TOP 10 LOSERS

	Ticker	Last Price	Daily %
S&P 500 Stocks			
Molson Coors Beverage	TAP	50	-3.06%
Conagra Brands Inc	CAG	36.19	-2.98%
Baker Hughes Co	BKR	20.11	-2.90%
Cabot Oil & Gas Corp	COG	17.38	-2.63%
Valero Energy Corp	VLO	71.09	-2.46%
Penn National Gaming	PENN	104.12	-2.41%
Xilinx Inc	XLNX	129.72	-2.30%
NOV Inc	NOV	13.09	-2.24%
HollyFrontier Corp	HFC	35.17	-1.90%
Kellogg Co	K	62.66	-1.88%

S&P 500 DISTRIBUTION

S&P VOLATILITY INDEX


- Pfizer and BioNTech are asking the FDA to expand emergency use authorization for their COVID-19 vaccine to include adolescents ages 12-15. The companies plan to make similar requests to other worldwide regulatory agencies in the coming days.
- Apple has tapped former WarnerMedia (-0.3%) executive Jessie Henderson to amp up original film production for Apple TV Plus, The Information reports. Henderson was previously executive VP of feature films for HBO Max, after joining WarnerMedia in 2019.
- Qualigen Therapeutics has announced that it has withdrawn the emergency use authorization application submitted to the FDA for FastPack COVID-19 diagnostic test. In reaction, the shares have dropped ~16.5% in post-market trading.
- VectivBio shares closed up 44.6% to \$24.59 on the stock's first day of trading. The company priced its IPO of 7.5M ordinary shares at \$17.00/share for expected gross proceeds of \$127.5M.
- SailPoint (-2.9%) shares are under pressure again after Okta launched privileged access management and identity governance products earlier last week, new competition for SailPoint.
- Energy Transfer (+2.3%) trades higher, but below an initial spike, on news that the Dakota Access Pipeline may continue to operate for now, as the U.S. Department of Justice announces no enforcement action against DAPL "at this time."
- Boeing (-1.5%) shares continue to bump along ~1.5% lower after the company flagged a new problem with 737 MAX jets, but some analysts say a fix will be easy and cause "minimal disruption" for customers.

KEY ECONOMIC INDICATORS

Country	Event	Surv (M)	Actual	Prior	Time
Canada	BoC Business Outlook Future Sales	--	--	48	17:30
China	Money Supply M2 YoY	9.50%	--	10.10%	
China	New Yuan Loans CNY	2.30E+12	--	1.36E+12	
China	Money Supply M1 YoY	8.00%	--	7.40%	
China	Money Supply M0 YoY	5.00%	--	4.20%	
Estonia	Unemployment Rate	--	--	8.70%	
Eurozone	Retail Sales MoM	1.70%	--	-5.90%	12:00
Eurozone	Retail Sales YoY	-5.30%	--	-6.40%	12:00
Finland	Current Account Balance	--	3.70E+08	-7.00E+07	8:00
France	Bank of France Ind. Sentiment	101	--	99	
Ireland	Ulster Bank Ireland Construction PMI	--	30.9	27	3:01
Japan	PPI YoY	0.50%	1.00%	-0.70%	2:50
Japan	Machine Tool Orders YoY	--	--	36.70%	9:00
Japan	PPI MoM	0.40%	0.80%	0.40%	2:50
Japan	Bank Lending Incl Trusts YoY	--	6.30%	6.20%	2:50
Latvia	Trade Balance	--	--	-7.22E+07	13:00
Lithuania	PPI YoY	--	--	-4.20%	9:00
Lithuania	PPI MoM	--	--	1.20%	9:00
Slovakia	Average Real Monthly Wage YoY	--	--	0.30%	10:00
United States	Monthly Budget Statement	-6.58E+11	--	-3.11E+11	21:00

Source: Bloomberg

Banque BEMO sal

Head Office - Private and Corporate Banking

Elias Sarkis Ave., Bemo Bldg , Ashrafieh - Lebanon
Tel: +961 1 200 505 Fax: +961 1 217 860

Research & Development research@bemobank.com

Elias Sarkis Ave., Bemo Bldg , Ashrafieh - Lebanon
Tel: +961 1 200 505 Fax: +961 1 217 860

Disclaimer:

This report is published for information purposes only. The information herein has been compiled from, or based upon sources considered to be reliable (Bloomberg, SeekingAlpha, DailyStar...), but we do not guarantee or assume responsibility for its completeness and accuracy. This document should not be construed as a solicitation to take part in any investment, or as constituting any representation or warranty on our part. This report is not to be relied upon in substitution for the exercise of specialists.

We may not have taken any steps to ensure that the securities referred to in this report are suitable for any particular investor. The investments and services contained or referred to herein are not purported to be exhaustive, any person considering an investment should seek specialist advice on the suitability of an investment.

Nothing in this report constitutes investment, legal, accounting or tax advice, or a representation that any investment or strategy is suitable or appropriate to your individual circumstances, or otherwise constitutes a personal recommendation. Clients understand that it is their responsibility to seek legal and/or tax advice regarding the legal and tax consequences of their investment transactions. The consequences of any action taken on the basis of information contained herein are solely the responsibility of the recipient.

Investment instruments are subject to risk, including possible loss of principal amount invested. Past performance should not be taken as an indication or guarantee of future performance, and no representation or warranty, express or implied, is made regarding future performance. The value of securities and financial instruments is subject to exchange rate fluctuation that may have a positive or adverse effect on the price or income of such securities or financial instruments. Some investments mentioned in this report may have a high level of volatility. High volatility investments may experience sudden and large falls in their value causing losses when that investment is realized. Some investments may not be readily realizable and it may be difficult to sell or realize those investments, similarly it may prove difficult to obtain reliable information about the value, or risks, to which such an investment is exposed.

This report may provide the addresses of websites or references. We have not reviewed any such site and takes no responsibility for the content contained therein. Such address or reference is provided solely for convenience and information. Accessing such website through this report shall be at the recipients own risk.