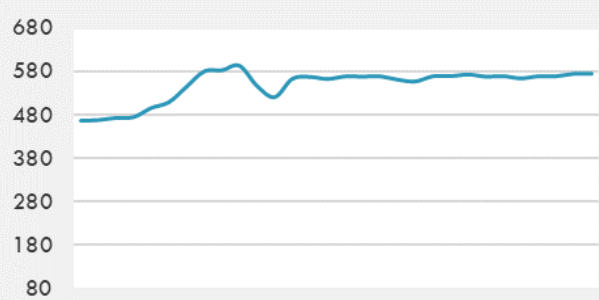
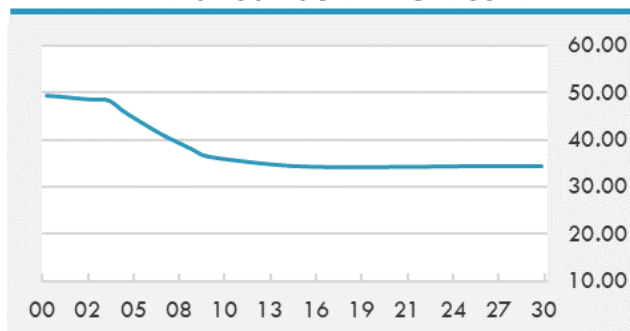


BEIRUT STOCK EXCHANGE

	Last	Daily %	YTD %	Dividend %
MSCI Lebanon	575.13	1.03%	31.39%	
Development and Reconstruction				
Solidere A	24.29	1.21%	31.30%	
Solidere B	24.08	0.50%	31.66%	
Banking				
Audi Listed	2.53	1.20%	107.38%	
BLC Listed	0.93	0.00%	0.00%	
BOB Listed	17.8	0.00%	0.00%	
Byblos Listed	0.77	-4.94%	45.28%	
BEMO Listed	1.2	0.00%	0.00%	
BLOM Listed	3.6	0.00%	73.91%	
Trading				
RYMCO	3.19	0.00%	0.00%	
Industrial				
Holcim	16.4	0.00%	13.10%	
Ciments Blancs	5.2	0.00%	26.83%	

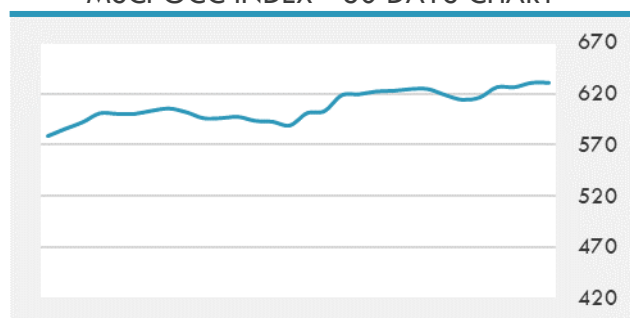
MSCI LEBANON INDEX - 30 DAYS CHART

LEBANESE USD SOVEREIGN CURVE


- The unemployment rate in Saudi Arabia decreased to 12.6% during the fourth quarter (Q4) of 2020, compared to 14.9% in the previous quarter, according to estimates by the General Authority for Statistics.
- The UAE stock markets have closed Monday's trading session in the red zone. The benchmark index of the Dubai Financial Market went down 0.14% to close Monday's session at 2,632.58 points.

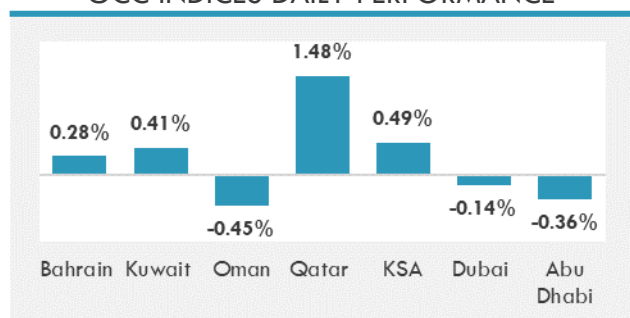
Source: Daily Star, Gulf Business, Mubasher, Bloomberg, Businessnews LB

GCC EQUITY INDICES

	Last Price	Daily %	YTD %
Bahrain	1479.67	0.28%	-0.68%
Kuwait	5978.16	0.41%	7.79%
Oman	3666.95	-0.45%	0.22%
Qatar	10920.69	1.48%	4.64%
KSA	10097.65	0.49%	16.20%
Dubai	2632.58	-0.14%	5.64%
Abu Dhabi	6102.21	-0.36%	20.95%

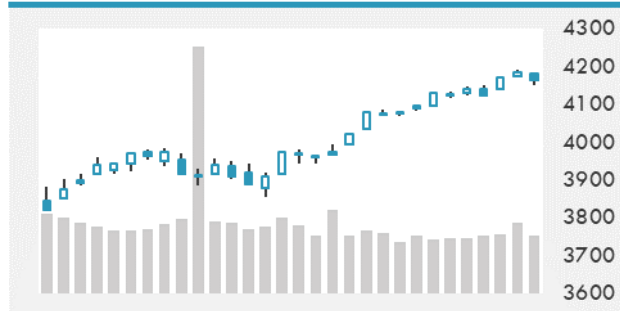
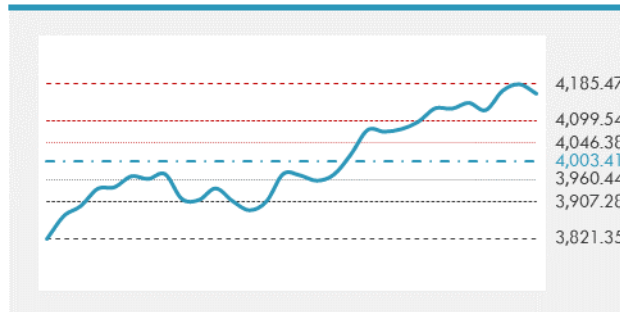
MSCI GCC INDEX - 30 DAYS CHART

LOCAL/GCC FOREIGN EXCHANGE

	Cross	Last Price
Lebanese Pound Spot	USD/LBP	1515.5
Bahraini Dinar Spot	USD/BHD	0.37698
Kuwaiti Dinar Spot	USD/KWD	0.30145
Omani Rial Spot	USD/OMR	0.38501
Qatari Riyal Spot	USD/QAR	3.6417
Saudi Riyal Spot	USD/SAR	3.7505
UAE Dirham Spot	USD/AED	3.673

GCC INDICES DAILY PERFORMANCE


UNITED STATES EQUITY MARKET INDICES

	Last Price	Daily %	YTD %	Δ10D Vol
Major Indices				
Dow Jones	34077.63	0.00%	11.34%	0.17%
S&P 500	4163.26	0.00%	10.84%	1.04%
Nasdaq	13914.77	0.00%	7.96%	1.73%
Sectors Indices				
Discretionary	1423.77	0.00%	9.31%	2.84%
Staples	713.95	0.00%	2.53%	0.71%
Energy	364.98	0.00%	27.55%	0.00%
Financials	586.42	0.00%	19.57%	0.25%
Healthcare	1415.09	0.00%	6.88%	-0.61%
Industrials	851.5	0.00%	13.60%	0.27%
IT	2495.17	0.00%	8.90%	1.01%
Materials	516.66	0.00%	13.37%	0.53%
Com. Services	251.24	0.00%	13.21%	0.20%
Utilities	339.89	0.00%	6.53%	1.28%
Real Estate	259.54	0.00%	13.88%	-0.02%

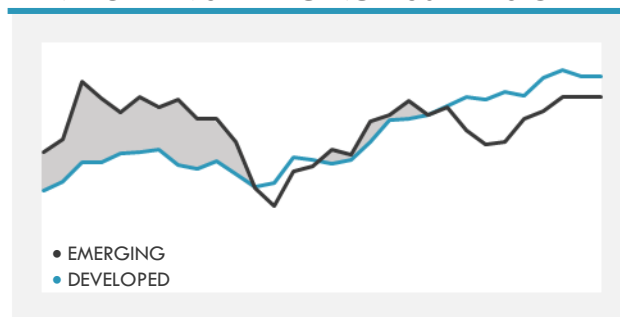
S&P 500 INDEX - 30 DAYS CHART

S&P 500 SUPPORT & RESISTANCE


- U.S. stock-index future dropped slightly after the S&P 500 Index ended last week at an all-time high.
- European equities hovered close to a record high amid concerns the rally had gone too far, as investors waited for the earnings season to get under way and looked for signs of economic recovery.
- Asian stocks fell, set to end a five-day winning streak, with Japanese shares the worst performers in the region.

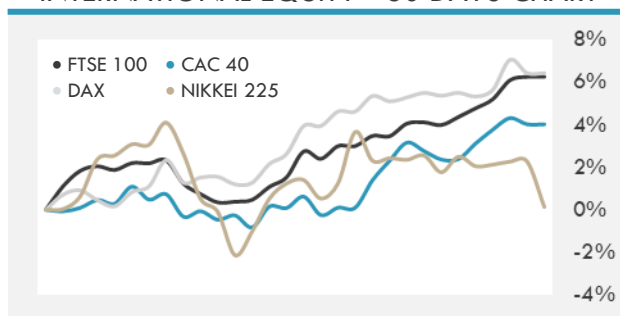
Source: Bloomberg, Financial Times, Reuters

INTERNATIONAL MARKETS INDICES

	Last Price	Daily %	YTD %	Δ10D Vol
World	1717.04	0.00%	8.77%	0.82%
Developed	2944.05	0.00%	9.44%	0.89%
Emerging	1348.55	0.00%	4.44%	-0.48%
Frontier	2515.68	0.00%	-2.94%	-1.90%
Europe	146.39	0.00%	10.82%	-0.15%
Latin America	2410.7	0.00%	-1.67%	0.01%
Asia Pacific	209.14	0.00%	4.61%	0.06%

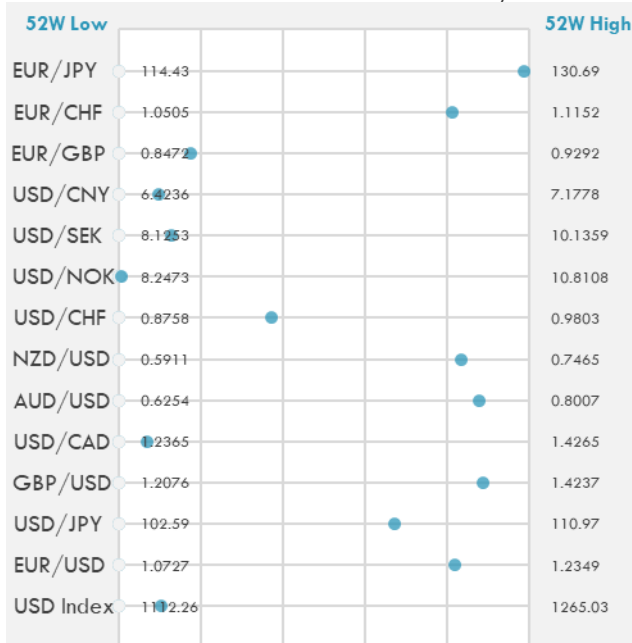
DEVELOPED VS EMERGING - 30 DAYS CHART

INTERNATIONAL EQUITY INDICES

	Last Price	Daily %	YTD %	Δ10D Vol
EuroStoxx 50	4019.91	0.00%	13.15%	0.18%
FTSE 100	7000.08	0.00%	8.35%	-0.71%
CAC 40	6296.69	0.00%	13.43%	0.01%
DAX	15368.39	0.00%	12.02%	0.68%
Swiss SMI	11209.84	0.00%	4.73%	0.13%
Nikkei 225	29065.12	-2.09%	5.91%	-3.00%
CSI 300	5105.51	0.36%	-2.03%	6.83%

INTERNATIONAL EQUITY - 30 DAYS CHART


FOREIGN EXCHANGE MARKET

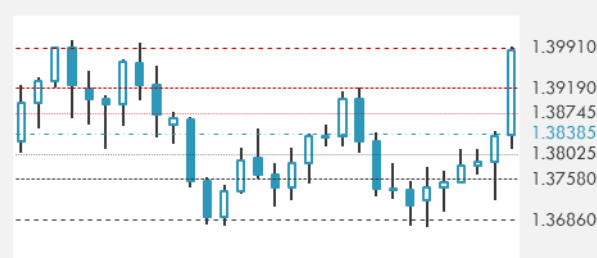
	Last Price	Daily %	Δ10D	Vol 25	ΔRR
Major USD Cross Rate					
USD Index	1128.21	-0.14%	-0.68%	-	
EUR/USD	1.2058	0.17%	-0.26%	0.298	
USD/JPY	108.23	0.06%	-0.06%	-0.275	
GBP/USD	1.3994	0.06%	-1.51%	-0.155	
USD/CAD	1.2495	-0.32%	-0.38%	0.398	
AUD/USD	0.7792	0.43%	-1.38%	-0.198	
NZD/USD	0.7208	0.32%	-1.48%	-0.093	
USD/CHF	0.9147	0.00%	0.07%	-0.110	
USD/NOK	8.2650	-0.33%	-0.01%	0.933	
USD/SEK	8.3863	-0.15%	-0.40%	0.490	
USD/CNY	6.4972	-0.20%	0.07%	0.800	
Major EUR Cross Rate					
EUR/GBP	0.8617	0.12%	-0.95%	0.073	
EUR/CHF	1.10302	0.13%	-0.03%	0.118	
EUR/JPY	130.51	0.23%	0.27%	-0.350	

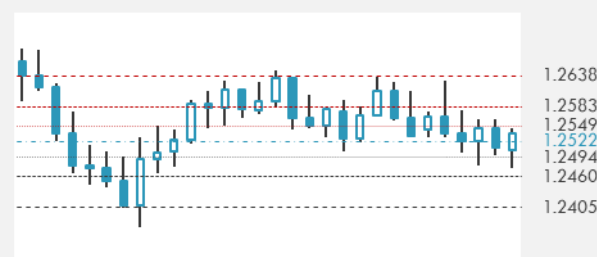
DISTANCE FROM 52 WEEKS LOW/HIGH


- China's yuan advances past 6.5 per dollar for the first time since March 18, tracking gains in Asia's currencies.
- The Australian dollar and Norway's krone outperformed Group-of-10 peers as prices of iron ore and crude oil rallied on signs of a recovery in demand.
- The dollar fell Monday, extending a five-day losing streak, as optimism about U.K. economic reopening lifted the pound. The euro benefited from a bullish forecast by Goldman Sachs, topping 1.20 for the first time in a month.

Source: Bloomberg, Financial Times, Reuters

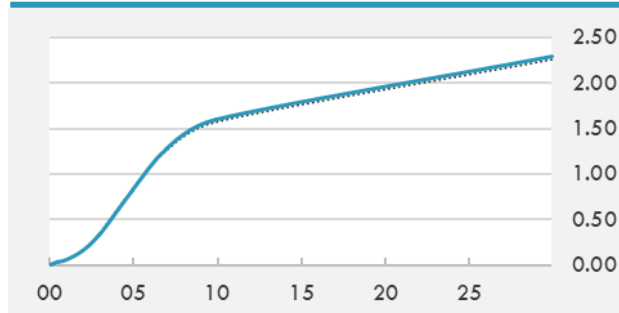
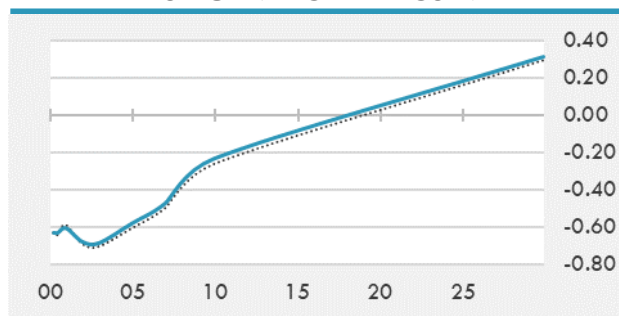
EUR/USD 30 DAYS SUPPORT & RESISTANCE

GBP/USD 30 DAYS SUPPORT & RESISTANCE

USD/JPY 30 DAYS SUPPORT & RESISTANCE

USD/CAD 30 DAYS SUPPORT & RESISTANCE


GLOBAL BOND INDICES

	Yield	ΔYield (in Bps)
Benchmark Indices		
US 10 Years Benchmark	1.6047	0.025
EU 10 Years Benchmark	-0.235	0.027
UK 10 Years Benchmark	0.755	-0.009
Sovereign Bonds		
US Treasury Bond	0.594	0
Eurozone Sovereign Bond	-0.428	0
Japan Sovereign Bond	-0.104	0
Corporate Bonds		
US Corporate TR	2.197	0.018
US High Yield Bond TR	4.013	0.020
EUR Aggregate Corporate TR	0.342	0.010
EUR High Yield TR	3.111	0.061
USD Emerging Market IG & HY	3.882	-0.025

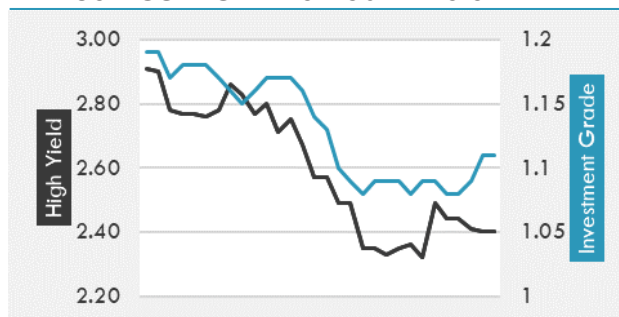
US TREASURIES YIELD CURVE

EUR GENERIC YIELD CURVE


- Treasury futures calm with Japan investors largely on the sidelines during Asia with yields stuck in the middle of recent range.
- Aussie bonds find support from coupon flow while Westpac strategist see Aussie-U.S. 10-year spread nearing attractive entry levels.
- Italy leads European bonds lower as analysts recommend a host of bearish trades on German debt and after news that Pfizer/BioNTech will supply the EU with 100m additional vaccine doses in 2021. French 30-year yields climb to the highest level in a year.

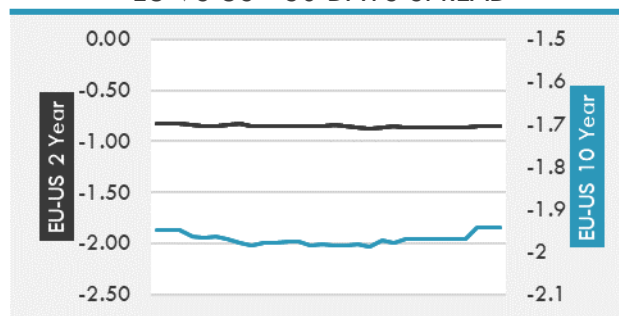
Source: Bloomberg, Financial Times, Economic times, Reuters

OVERNIGHT RATES - SWAPS

	Yield	ΔYield (in Bps)
3M USD LIBOR	0.188	0.000
3M EUR EURIBOR	-0.538	0.000
3M GBP LIBOR	0.082	0.000
3Y USD SWAP	0.460	-0.007
5Y USD SWAP	0.910	-0.002
10Y USD SWAP	1.587	0.021
30Y USD SWAP	2.010	0.018

USD CORPORATES - 30 DAYS SPREAD

FIXED INCOME SPREADS

	Spread	ΔSpread (in Bps)
USD 3M vs 10Y Spread	1.586	0.022
USD 2Y vs 10Y Spread	1.443	0.027
USD IG Spread	1.110	0.020
USD HY Spread	2.400	-0.010
EU vs US 10Y Spread	-1.842	0.000
EU vs US 2Y Spread	-0.852	0.000
EM vs Benchmark Spread	272.000	-5.000

EU VS US - 30 DAYS SPREAD


GLOBAL COMMODITIES MARKET

	Last Price	Daily %
Commodity Index	87.16	0.44%

Energy

WTI Crude Future	63.95	0.90%
Brent Crude Future	67.69	0.95%
NYMEX Gasoline	206.29	0.90%
NYMEX Heat Oil	190.6	0.71%
ICE Gasoil	534.5	1.04%
NYMEX Natural Gas	2.751	0.07%

Precious Metals

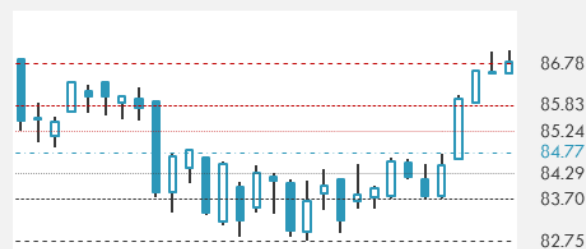
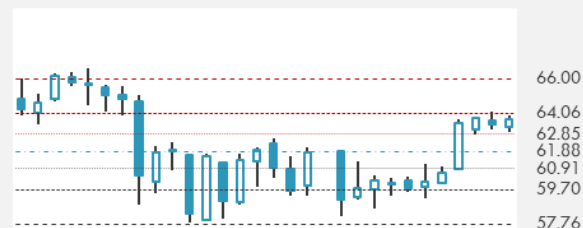
Gold Spot \$/Oz	1769.24	-0.12%
Silver Spot \$/Oz	25.8782	0.21%
Platinum Spot \$/Oz	1209.3	-0.15%
Palladium Spot \$/Oz	2794.41	-0.51%
Gold Future	1769	-0.09%
Silver Future	25.925	0.34%
Platinum Future	1209.4	0.24%
Palladium Future	2790	-0.84%

Base Metals

LME Aluminum	2330	0.00%
LME Copper	9376	0.00%
LME Zinc	2846	0.00%
LME Nickel	16121	0.00%
LME Lead	2057	0.00%
LME Tin	26718	0.00%

Agricultural

Corn CBT	583.25	0.47%
Wheat CBT	655	0.19%
Soybeans CBT	1447.5	0.77%
Bean Meal CBT	413.7	0.58%
Rough Rice CBT	12.85	0.04%
MDE Palm Oil	3712	0.05%
Soybean CBT	53.75	-0.22%
Coffee ICE	131.9	0.00%
Sugar #11 ICE	16.21	0.00%
Cotton #2 ICE	85.51	0.94%
Cocoa ICE	2492	0.00%
Ethanol CME	2.14	0.00%
Lumber CME	1326.7	0.00%
Orange Juice ICE	116.65	0.00%
Live Cattle CME	118.6	0.00%
Feeder Cattle CME	152.775	0.00%
Lean Hogs CME	104.325	0.00%

COMMODITY INDEX SUPPORT & RESISTANCE

WTI OIL 30 DAYS SUPPORT & RESISTANCE


- OPEC and its allies are discussing downgrading next week's full-scale ministerial meeting, delegates said, a signal the coalition may stick with plans to gradually revive oil production.
- Gold steadies near seven-week high as yields keep falling.

Source: Bloomberg, Reuters

GOLD 30 DAYS SUPPORT & RESISTANCE

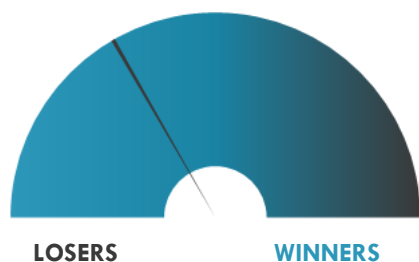
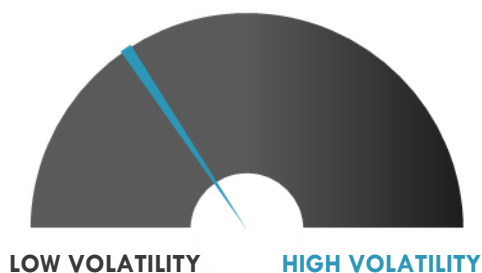
SILVER 30 DAYS SUPPORT & RESISTANCE


TOP 10 WINNERS

	Ticker	Last Price	Daily %
S&P 500 Stocks			
Albemarle Corp	ALB	157.5	+3.60%
Morgan Stanley	MS	80.03	+1.83%
Charles Schwab Corp	SCHW	65.88	+1.76%
B. of New York Mellon	BK	46.81	+1.61%
APA Corp	APA	18.07	+1.55%
Jack Henry & Associates	JKHY	161.15	+1.45%
Netflix Inc	NFLX	554.44	+1.45%
Public Storage	PSA	270.38	+1.34%
Ingersoll Rand Inc	IR	50.91	+1.33%
Illumina Inc	ILMN	404.18	+1.30%

TOP 10 LOSERS

	Ticker	Last Price	Daily %
S&P 500 Stocks			
Penn National Gaming	PENN	93	-6.94%
Altria Group Inc	MO	49.08	-6.17%
Enphase Energy Inc	ENPH	141.14	-5.91%
Caesars Entertainment	CZR	88.75	-5.22%
PTC Inc	PTC	139.8	-4.35%
Generac Holdings Inc	GNRC	318.68	-4.08%
Synopsys Inc	SNPS	250.64	-3.88%
Cadence Design Sys.	CDNS	141.94	-3.61%
Broadcom Inc	AVGO	462	-3.51%
NVIDIA Corp	NVDA	614.47	-3.46%

S&P 500 DISTRIBUTION

S&P VOLATILITY INDEX


- Ovid Therapeutics has slipped 3.2% postmarket after a downgrade to Neutral at Cantor Fitzgerald, pointing to decisions to discard development of approaches to Angelman syndrome and Fragile X syndrome.
- J2 Global is up 4.1% after hours after announcing its plan to separate into two independent publicly traded companies.
- Zions Bancorporation stock rises 2.2% in after-hours trading after the bank says improved confidence in the economic outlook, combined with rising capital ratios, is expected to allow for more active capital management.
- Futu Holdings announces the commencement of the offering of 9.5M American depository shares, each representing eight Class A ordinary shares.
- Conformis enters into a license agreement with Paragon 28, granting Paragon 28 the use of patient-specific instruments with off-the-shelf implants in Paragon 28's APEX 3D™ Total Ankle Replacement System.
- Aviat Networks has signed a multi-million-dollar agreement with Africell, a mobile operator serving over 12M subscribers throughout Africa, to provide 5G-ready end-to-end disaggregated transmission network across multiple African countries.
- IBM reports first quarter revenue of \$17.7B, up 1% on the year in the first sales growth after four straight quarters of declines. IBM's segments all topped revenue consensus estimates with the exception of Global Financing.

KEY ECONOMIC INDICATORS

Country	Event	Surv (M)	Actual	Prior	Time
Australia	ANZ Roy Morgan Weekly Consumer Conf. Index	--	114	114.1	2:30
Canada	Teranet/National Bank HPI MoM	--	--	0.50%	15:30
Canada	Teranet/National Bank HPI YoY	--	--	9.80%	15:30
Canada	Teranet/National Bank HP Index	--	--	251.8	15:30
China	1-Year Loan Prime Rate	3.85%	3.85%	3.85%	4:30
Estonia	PPI YoY	--	4.80%	4.10%	8:00
Estonia	PPI MoM	--	-0.20%	1.00%	8:00
Germany	PPI MoM	0.60%	--	0.70%	9:00
Germany	PPI YoY	3.30%	--	1.90%	9:00
Ireland	Consumer Confidence Index	--	--	77.1	
Japan	Tertiary Industry Index MoM	0.50%	0.30%	-1.70%	7:30
Japan	Machine Tool Orders YoY	--	--	65.00%	9:00
Japan	Convenience Store Sales YoY	--	1.90%	-5.30%	8:00
Slovakia	Unemployment Rate	--	--	7.90%	
United Kingdom	Jobless Claims Change	--	--	86600	9:00
United Kingdom	ILO Unemployment Rate 3Mths	5.00%	--	5.00%	9:00
United Kingdom	Claimant Count Rate	--	--	7.50%	9:00
United Kingdom	Average Weekly Earnings 3M/YoY	4.80%	--	4.80%	9:00
United Kingdom	Weekly Earnings ex Bonus 3M/YoY	4.20%	--	4.20%	9:00
United Kingdom	Employment Change 3M/3M	-145000	--	-147000	9:00

Source: Bloomberg

Banque BEMO sal

Head Office - Private and Corporate Banking

Elias Sarkis Ave., Bemo Bldg , Ashrafieh - Lebanon
Tel: +961 1 200 505 Fax: +961 1 217 860

Research & Development research@bemobank.com

Elias Sarkis Ave., Bemo Bldg , Ashrafieh - Lebanon
Tel: +961 1 200 505 Fax: +961 1 217 860

Disclaimer:

This report is published for information purposes only. The information herein has been compiled from, or based upon sources considered to be reliable (Bloomberg, SeekingAlpha, DailyStar...), but we do not guarantee or assume responsibility for its completeness and accuracy. This document should not be construed as a solicitation to take part in any investment, or as constituting any representation or warranty on our part. This report is not to be relied upon in substitution for the exercise of specialists.

We may not have taken any steps to ensure that the securities referred to in this report are suitable for any particular investor. The investments and services contained or referred to herein are not purported to be exhaustive, any person considering an investment should seek specialist advice on the suitability of an investment.

Nothing in this report constitutes investment, legal, accounting or tax advice, or a representation that any investment or strategy is suitable or appropriate to your individual circumstances, or otherwise constitutes a personal recommendation. Clients understand that it is their responsibility to seek legal and/or tax advice regarding the legal and tax consequences of their investment transactions. The consequences of any action taken on the basis of information contained herein are solely the responsibility of the recipient.

Investment instruments are subject to risk, including possible loss of principal amount invested. Past performance should not be taken as an indication or guarantee of future performance, and no representation or warranty, express or implied, is made regarding future performance. The value of securities and financial instruments is subject to exchange rate fluctuation that may have a positive or adverse effect on the price or income of such securities or financial instruments. Some investments mentioned in this report may have a high level of volatility. High volatility investments may experience sudden and large falls in their value causing losses when that investment is realized. Some investments may not be readily realizable and it may be difficult to sell or realize those investments, similarly it may prove difficult to obtain reliable information about the value, or risks, to which such an investment is exposed.

This report may provide the addresses of websites or references. We have not reviewed any such site and takes no responsibility for the content contained therein. Such address or reference is provided solely for convenience and information. Accessing such website through this report shall be at the recipients own risk.