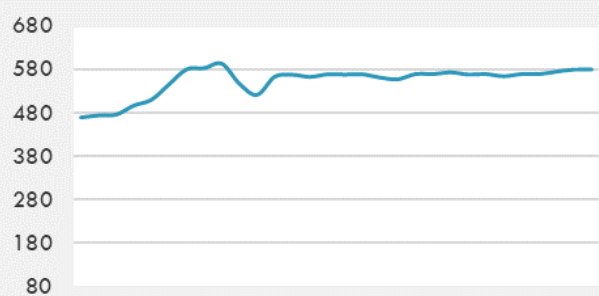
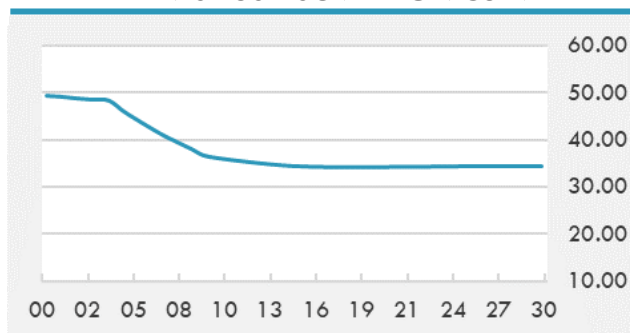


BEIRUT STOCK EXCHANGE

	Last	Daily %	YTD %	Dividend %
MSCI Lebanon	579.82	0.82%	32.46%	
Development and Reconstruction				
Solidere A	24.49	0.82%	32.38%	
Solidere B	24.27	0.79%	32.70%	
Banking				
Audi Listed	2.5	-1.19%	104.92%	
BLC Listed	0.93	0.00%	0.00%	
BOB Listed	17.8	0.00%	0.00%	
Byblos Listed	0.77	0.00%	45.28%	
BEMO Listed	1.2	0.00%	0.00%	
BLOM Listed	3.6	0.00%	73.91%	
Trading				
RYMCO	3.19	0.00%	0.00%	
Industrial				
Holcim	16.4	0.00%	13.10%	
Ciments Blancs	5.2	0.00%	26.83%	

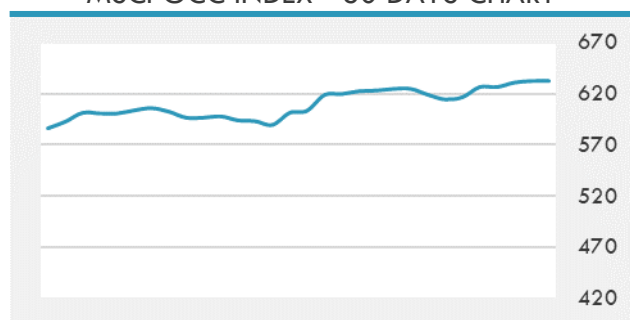
MSCI LEBANON INDEX - 30 DAYS CHART

LEBANESE USD SOVEREIGN CURVE


- The UAE stock markets have ended Tuesday's trading session on a varied note. The benchmark index of the Dubai Financial Market went down 0.31% to settle at 2,624.27 points by the end of Tuesday's session.
- ZIN Technologies, a NASA prime contractor, has launched Zin Aerospace Company in the Abu Dhabi Global Market to offer space flight physical and life science solutions in the UAE.
- Eni RAK, the subsidiary of Italy's Eni, has entered into an exploration and production sharing agreement with the Ras Al Khaimah Petroleum Authority for Block 7.

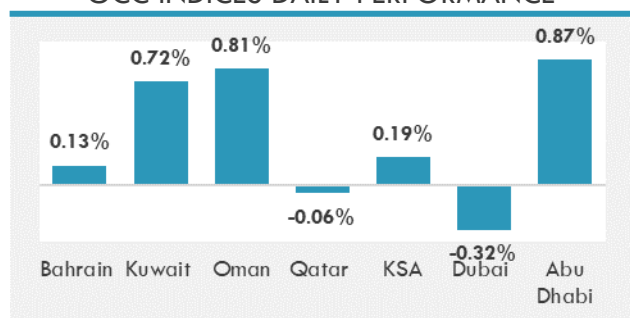
Source: Daily Star, Gulf Business, Mubasher, Bloomberg, Businessnews LB

GCC EQUITY INDICES

	Last Price	Daily %	YTD %
Bahrain	1481.62	0.13%	-0.55%
Kuwait	6021.2	0.72%	8.57%
Oman	3696.63	0.81%	1.03%
Qatar	10914.12	-0.06%	4.58%
KSA	10116.98	0.19%	16.43%
Dubai	2624.27	-0.32%	5.31%
Abu Dhabi	6155.42	0.87%	22.00%

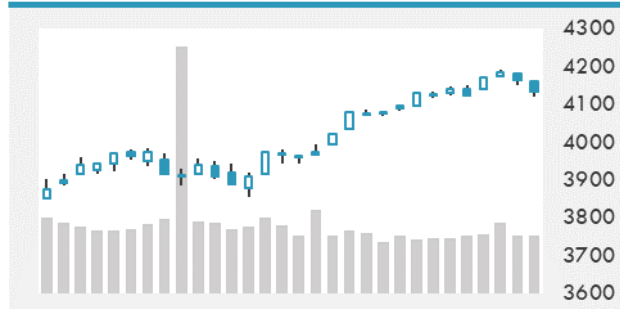
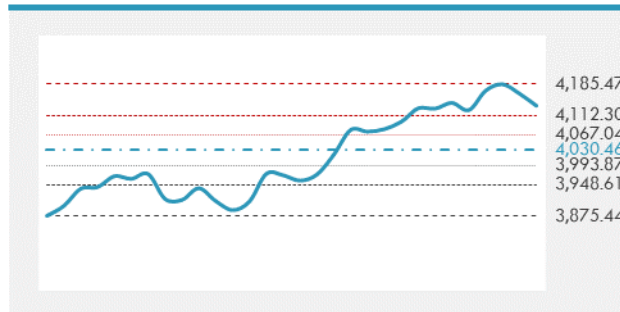
MSCI GCC INDEX - 30 DAYS CHART

LOCAL/GCC FOREIGN EXCHANGE

	Cross	Last Price
Lebanese Pound Spot	USD/LBP	1515.5
Bahraini Dinar Spot	USD/BHD	0.37699
Kuwaiti Dinar Spot	USD/KWD	0.30145
Omani Rial Spot	USD/OMR	0.38501
Qatari Riyal Spot	USD/QAR	3.6416
Saudi Riyal Spot	USD/SAR	3.7503
UAE Dirham Spot	USD/AED	3.673

GCC INDICES DAILY PERFORMANCE


UNITED STATES EQUITY MARKET INDICES

	Last Price	Daily %	YTD %	Δ10D Vol
Major Indices				
Dow Jones	33821.3	0.00%	10.50%	1.67%
S&P 500	4134.94	0.00%	10.09%	1.37%
Nasdaq	13786.27	0.00%	6.97%	1.21%
Sectors Indices				
Discretionary	1406.37	0.00%	7.97%	2.10%
Staples	718.05	0.00%	3.12%	0.24%
Energy	355.26	0.00%	24.16%	3.72%
Financials	575.78	0.00%	17.40%	4.86%
Healthcare	1421.13	0.00%	7.34%	-0.79%
Industrials	842.2	0.00%	12.36%	2.05%
IT	2474.25	0.00%	7.99%	1.10%
Materials	511.82	0.00%	12.31%	-3.19%
Com. Services	249.95	0.00%	12.63%	-0.45%
Utilities	344.36	0.00%	7.93%	0.91%
Real Estate	262.45	0.00%	15.16%	0.72%

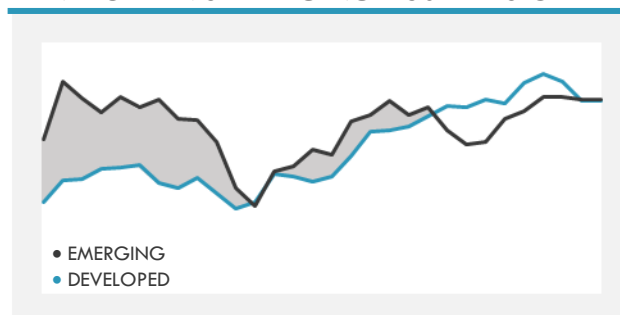
S&P 500 INDEX - 30 DAYS CHART

S&P 500 SUPPORT & RESISTANCE


- U.S. index futures slide for a second day as investors weigh corporate earnings and recent spikes in virus cases.
- European equities sank the most in four months as renewed virus concerns prompted investors to take profits in sectors that have led the rally to record highs this year.
- Asia stocks tumbled as concerns over a new surge in infections around the world and the economic impact of potential lockdowns weighed on markets.

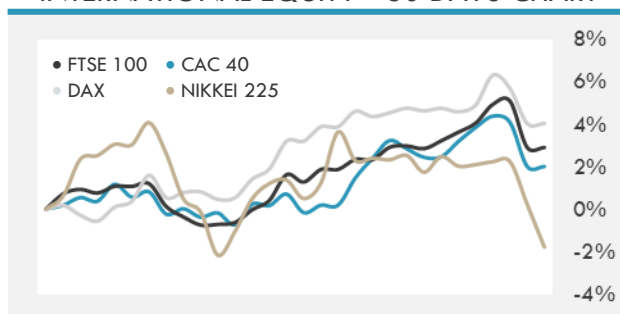
Source: Bloomberg, Financial Times, Reuters

INTERNATIONAL MARKETS INDICES

	Last Price	Daily %	YTD %	Δ10D Vol
World	1702.54	0.00%	7.86%	2.41%
Developed	2915.78	0.00%	8.39%	2.79%
Emerging	1347.61	0.00%	4.36%	-0.69%
Frontier	2519.3	0.00%	-2.80%	-0.13%
Europe	143.58	0.00%	8.69%	6.45%
Latin America	2410.83	0.00%	-1.67%	-0.10%
Asia Pacific	207.92	0.00%	4.00%	0.86%

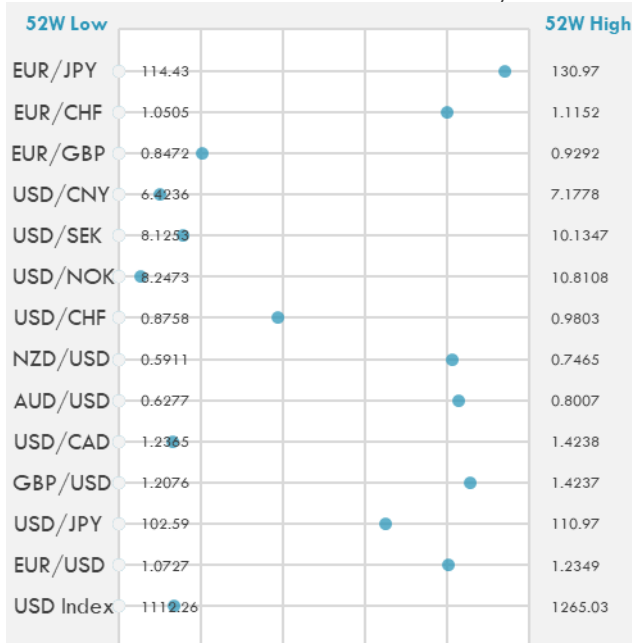
DEVELOPED VS EMERGING - 30 DAYS CHART

INTERNATIONAL EQUITY INDICES

	Last Price	Daily %	YTD %	Δ10D Vol
EuroStoxx 50	3940.46	0.00%	10.92%	6.16%
FTSE 100	6859.87	0.00%	6.18%	5.65%
CAC 40	6165.11	0.00%	11.05%	8.97%
DAX	15129.51	0.00%	10.28%	3.85%
Swiss SMI	11078.98	0.00%	3.51%	1.95%
Nikkei 225	28517.51	-2.00%	3.91%	5.81%
CSI 300	5091.57	0.16%	-2.30%	-0.32%

INTERNATIONAL EQUITY - 30 DAYS CHART


FOREIGN EXCHANGE MARKET

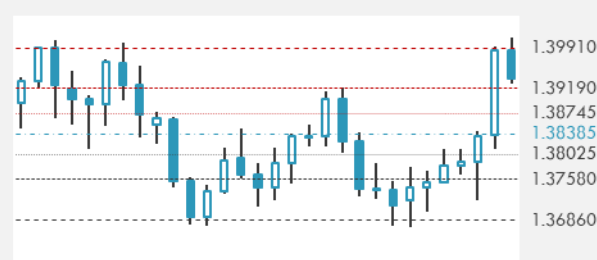
	Last Price	Daily %	Δ10D	Vol 25	ΔRR
Major USD Cross Rate					
USD Index	1132.77	0.06%	-0.18%	-	
EUR/USD	1.203	-0.05%	-0.16%	0.220	
USD/JPY	108.04	-0.06%	-0.52%	-0.248	
GBP/USD	1.3927	-0.07%	0.06%	-0.105	
USD/CAD	1.2609	0.00%	-0.51%	0.508	
AUD/USD	0.7711	-0.19%	-0.10%	-0.390	
NZD/USD	0.7172	-0.04%	-0.17%	-0.300	
USD/CHF	0.9164	0.03%	-0.78%	-0.093	
USD/NOK	8.3814	0.25%	0.25%	0.988	
USD/SEK	8.4391	0.06%	-1.34%	0.490	
USD/CNY	6.4988	-0.01%	-0.44%	0.700	
Major EUR Cross Rate					
EUR/GBP	0.86379	0.03%	-0.60%	0.050	
EUR/CHF	1.10237	0.01%	-0.14%	0.150	
EUR/JPY	129.97	-0.12%	-0.06%	-0.338	

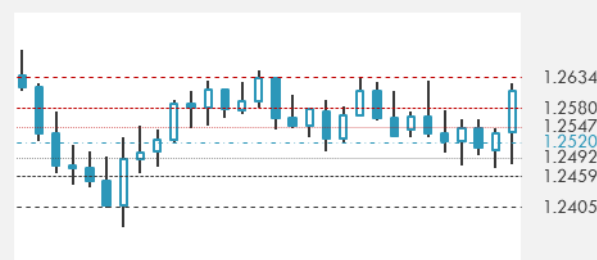
DISTANCE FROM 52 WEEKS LOW/HIGH


- The yen rose against all its Group-of-10 peers as investors sought refuge in havens amid a renewed surge in Covid-19 cases.
- A gauge of the dollar snapped a six-day losing streak on Tuesday as commodity currencies slipped along with crude oil after a U.S. House committee cleared a bill that opens OPEC to Justice Department antitrust lawsuits.
- Australia's dollar holds losses after its biggest drop in two weeks as stocks decline around the world amid concern the spreading coronavirus will delay the global economic recovery.

Source: Bloomberg, Financial Times, Reuters

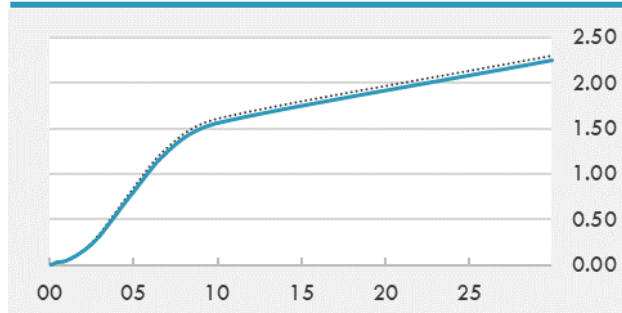
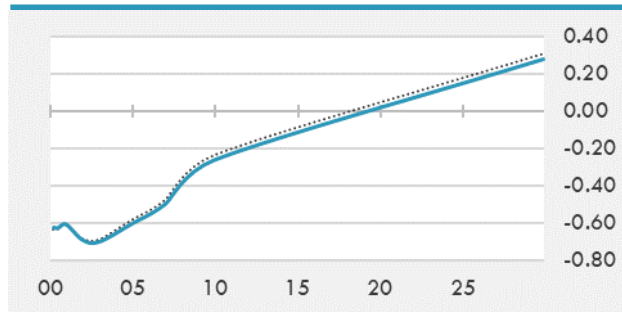
EUR/USD 30 DAYS SUPPORT & RESISTANCE

GBP/USD 30 DAYS SUPPORT & RESISTANCE

USD/JPY 30 DAYS SUPPORT & RESISTANCE

USD/CAD 30 DAYS SUPPORT & RESISTANCE


GLOBAL BOND INDICES

	Yield	ΔYield (in Bps)
Benchmark Indices		
US 10 Years Benchmark	1.5589	-0.046
EU 10 Years Benchmark	-0.262	-0.027
UK 10 Years Benchmark	0.731	-0.024
Sovereign Bonds		
US Treasury Bond	0.594	0
Eurozone Sovereign Bond	-0.428	0
Japan Sovereign Bond	-0.104	0
Corporate Bonds		
US Corporate TR	2.178	-0.019
US High Yield Bond TR	4.083	0.069
EUR Aggregate Corporate TR	0.335	-0.007
EUR High Yield TR	3.093	-0.018
USD Emerging Market IG & HY	3.898	0.015

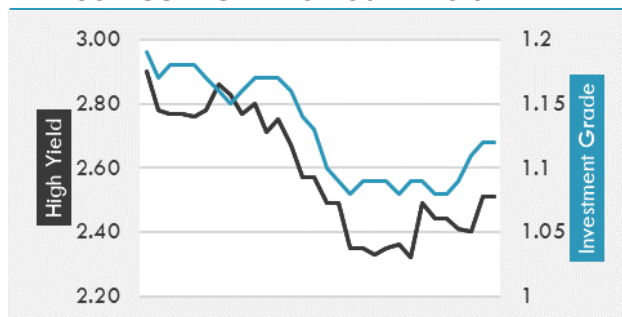
US TREASURIES YIELD CURVE

EUR GENERIC YIELD CURVE


- The United Arab Emirates bought more U.S. Treasuries than China in February, breaking with other top oil exporters in the Persian Gulf region that cut back on their exposure to one of the world's safest assets.
- Treasury futures tread water with 10-year yields trapped in 1bp range.
- Aussie bonds were firm after tap of 2.5% May 2030 note for A\$1.2b saw strong demand.

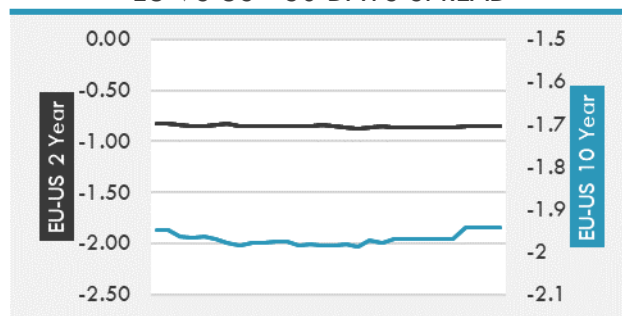
Source: Bloomberg, Financial Times, Economic times, Reuters

OVERNIGHT RATES - SWAPS

	Yield	ΔYield (in Bps)
3M USD LIBOR	0.186	0.000
3M EUR EURIBOR	-0.537	0.000
3M GBP LIBOR	0.084	0.000
3Y USD SWAP	0.445	-0.015
5Y USD SWAP	0.883	-0.027
10Y USD SWAP	1.550	-0.037
30Y USD SWAP	1.980	-0.030

USD CORPORATES - 30 DAYS SPREAD

FIXED INCOME SPREADS

	Spread	ΔSpread (in Bps)
USD 3M vs 10Y Spread	1.536	-0.050
USD 2Y vs 10Y Spread	1.408	-0.036
USD IG Spread	1.120	0.010
USD HY Spread	2.510	0.110
EU vs US 10Y Spread	-1.842	0.000
EU vs US 2Y Spread	-0.852	0.000
EM vs Benchmark Spread	275.500	3.500

EU VS US - 30 DAYS SPREAD


GLOBAL COMMODITIES MARKET

	Last Price	Daily %
Commodity Index	87.07	0.11%

Energy

WTI Crude Future	62.21	-0.73%
Brent Crude Future	66.09	-0.72%
NYMEX Gasoline	200.73	-0.50%
NYMEX Heat Oil	186.76	-0.66%
ICE Gasoil	523	0.77%
NYMEX Natural Gas	2.721	-0.22%

Precious Metals

Gold Spot \$/Oz	1783.32	0.26%
Silver Spot \$/Oz	25.9175	0.30%
Platinum Spot \$/Oz	1192.48	0.17%
Palladium Spot \$/Oz	2777.5	0.55%
Gold Future	1783.7	0.30%
Silver Future	25.96	0.46%
Platinum Future	1191.8	-0.38%
Palladium Future	2782	0.89%

Base Metals

LME Aluminum	2310	0.00%
LME Copper	9322	0.00%
LME Zinc	2814	0.00%
LME Nickel	16038	0.00%
LME Lead	2030	0.00%
LME Tin	26822	0.00%

Agricultural

Corn CBT	597.25	0.89%
Wheat CBT	664.75	0.53%
Soybeans CBT	1467.5	0.67%
Bean Meal CBT	415.6	0.22%
Rough Rice CBT	12.825	-0.12%
MDE Palm Oil	3895	2.37%
Soybean CBT	55.69	1.00%
Coffee ICE	134.45	0.00%
Sugar #11 ICE	16.72	0.00%
Cotton #2 ICE	85.54	0.43%
Cocoa ICE	2419	0.00%
Ethanol CME	2.16	0.00%
Lumber CME	1278.7	0.00%
Orange Juice ICE	114.2	0.00%
Live Cattle CME	119.2	0.00%
Feeder Cattle CME	154.525	0.00%
Lean Hogs CME	106.35	0.00%

COMMODITY INDEX SUPPORT & RESISTANCE

WTI OIL 30 DAYS SUPPORT & RESISTANCE


- Oil prices fell, weighed down by concerns that surging COVID-19 cases in India will drive down fuel demand in the world's third biggest oil importer.
- Gold held a gain as bond yields stabilized after trending down, with investors weighing the risks to the economic recovery amid rising virus cases globally.

Source: Bloomberg, Reuters

GOLD 30 DAYS SUPPORT & RESISTANCE

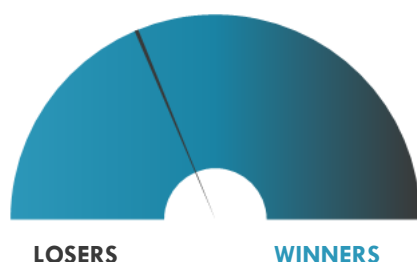
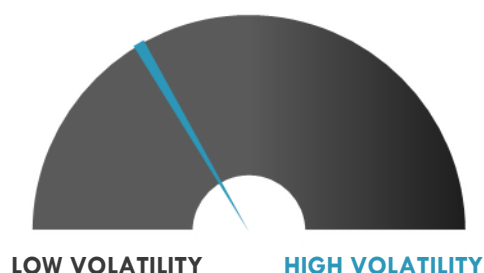
SILVER 30 DAYS SUPPORT & RESISTANCE


TOP 10 WINNERS

	Ticker	Last Price	Daily %
S&P 500 Stocks			
Kansas City Southern	KSU	295.5	+15.25%
Enphase Energy Inc	ENPH	147	+4.15%
Intern. Business Machine	IBM	138.16	+3.79%
Dover Corp	DOV	144.86	+3.15%
Atmos Energy Corp	ATO	104.59	+2.70%
Iron Mountain Inc	IRM	39.49	+2.62%
Philip Morris Intern.	PM	94	+2.54%
Ameren Corp	AEE	85.89	+2.51%
Kimberly-Clark Corp	KMB	142.39	+2.49%
Eergy Inc	EVRG	64.81	+2.48%

TOP 10 LOSERS

	Ticker	Last Price	Daily %
S&P 500 Stocks			
United Airlines Holdings	UAL	50.3	-8.53%
Zions Bancorp NA	ZION	52.35	-6.52%
APA Corp	APA	17	-5.92%
Albemarle Corp	ALB	148.52	-5.70%
American Airlines	AAL	20.37	-5.48%
Occidental Petroleum	OXY	23.2	-5.46%
Ford Motor Co	F	11.45	-5.45%
Marathon Oil Corp	MRO	10.11	-4.89%
Schlumberger NV	SLB	25.25	-4.82%
Howmet Aerospace Inc	HWM	31	-4.82%

S&P 500 DISTRIBUTION

S&P VOLATILITY INDEX


- Marvell Technology closes its \$10B cash and stock acquisition of Inphi. The resulting combined company, using the Marvell name, is a Delaware company domiciled in the United States.
- TechnipFMC was awarded a significant subsea contract from Petrobras for the Marlim and Voador fields, located offshore Brazil.
- CSX reported that revenue declined 1% in Q1 to \$2.81B as intermodal and other revenue growth was more than offset by declines in revenue for merchandise, coal and fuel surcharges. Revenue per unit was down 2% Y/Y/ Expenses were 2% Y/Y higher during the quarter to \$1.71B. Operating income fell 7% Y/Y to \$1.10B.
- Netflix has slid 10.5% after its first-quarter earnings report came up light of guidance on subscriber additions, and guided to just 1M adds for the current quarter.
- FuelCell Energy plunges to a YTD low after Wells Fargo analyst Praneeth Satish initiates coverage with an Underweight rating and a \$9 price target, saying the company is lagging peers on commercialization with no clear path to grow into its current valuation.
- BMO maintains a Market Perform rating on IBM after Monday's first-quarter report but raises the price target from \$138 to \$150.
- Critical Solutions announced that two profit sharing contracts in cannabis distribution and cannabis cultivation management are now actively generating returns to the company.
- Activision Blizzard is sinking, down 1.8%, after announcing it's losing the leader of its hit shooting game Overwatch.

KEY ECONOMIC INDICATORS

Country	Event	Surv (M)	Actual	Prior	Time
Australia	Retail Sales MoM	1.00%	1.40%	-0.80%	4:30
Australia	Westpac Leading Index MoM	--	0.38%	0.01%	3:30
Canada	Bank of Canada Rate Decision	0.25%	--	0.25%	17:00
Canada	CPI YoY	2.30%	--	1.10%	15:30
Canada	CPI NSA MoM	0.60%	--	0.50%	15:30
Canada	CPI Core- Trim YoY%	2.00%	--	1.90%	15:30
Ireland	Consumer Confidence Index	--	--	77.1	
Japan	Supermarket Sales YoY	--	1.30%	-2.10%	8:00
Slovenia	PPI YoY	--	--	1.00%	11:30
Slovenia	PPI MoM	--	--	0.60%	11:30
Spain	House transactions YoY	--	--	-15.40%	10:00
United Kingdom	CPI YoY	0.80%	--	0.40%	9:00
United Kingdom	CPI MoM	0.40%	--	0.10%	9:00
United Kingdom	CPI Core YoY	1.10%	--	0.90%	9:00
United Kingdom	RPI MoM	0.40%	--	0.50%	9:00
United Kingdom	RPI YoY	1.60%	--	1.40%	9:00
United Kingdom	Retail Price Index	297.2	--	296	9:00
United Kingdom	RPI Ex Mort Int.Payments (YoY)	1.80%	--	1.60%	9:00
United Kingdom	PPI Output NSA MoM	0.30%	--	0.60%	9:00
United States	MBA Mortgage Applications	--	--	-3.70%	14:00

Source: Bloomberg

Banque BEMO sal

Head Office - Private and Corporate Banking

Elias Sarkis Ave., Bemo Bldg , Ashrafieh - Lebanon
Tel: +961 1 200 505 Fax: +961 1 217 860

Research & Development research@bemobank.com

Elias Sarkis Ave., Bemo Bldg , Ashrafieh - Lebanon
Tel: +961 1 200 505 Fax: +961 1 217 860

Disclaimer:

This report is published for information purposes only. The information herein has been compiled from, or based upon sources considered to be reliable (Bloomberg, SeekingAlpha, DailyStar...), but we do not guarantee or assume responsibility for its completeness and accuracy. This document should not be construed as a solicitation to take part in any investment, or as constituting any representation or warranty on our part. This report is not to be relied upon in substitution for the exercise of specialists.

We may not have taken any steps to ensure that the securities referred to in this report are suitable for any particular investor. The investments and services contained or referred to herein are not purported to be exhaustive, any person considering an investment should seek specialist advice on the suitability of an investment.

Nothing in this report constitutes investment, legal, accounting or tax advice, or a representation that any investment or strategy is suitable or appropriate to your individual circumstances, or otherwise constitutes a personal recommendation. Clients understand that it is their responsibility to seek legal and/or tax advice regarding the legal and tax consequences of their investment transactions. The consequences of any action taken on the basis of information contained herein are solely the responsibility of the recipient.

Investment instruments are subject to risk, including possible loss of principal amount invested. Past performance should not be taken as an indication or guarantee of future performance, and no representation or warranty, express or implied, is made regarding future performance. The value of securities and financial instruments is subject to exchange rate fluctuation that may have a positive or adverse effect on the price or income of such securities or financial instruments. Some investments mentioned in this report may have a high level of volatility. High volatility investments may experience sudden and large falls in their value causing losses when that investment is realized. Some investments may not be readily realizable and it may be difficult to sell or realize those investments, similarly it may prove difficult to obtain reliable information about the value, or risks, to which such an investment is exposed.

This report may provide the addresses of websites or references. We have not reviewed any such site and takes no responsibility for the content contained therein. Such address or reference is provided solely for convenience and information. Accessing such website through this report shall be at the recipients own risk.