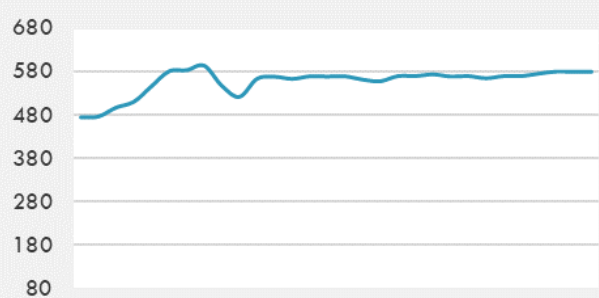
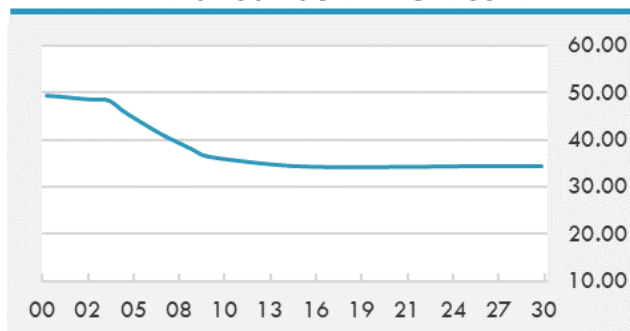


BEIRUT STOCK EXCHANGE

	Last	Daily %	YTD %	Dividend %
MSCI Lebanon	579.21	-0.11%	32.32%	
Development and Reconstruction				
Solidere A	24.38	-0.45%	31.78%	
Solidere B	24.5	0.95%	33.95%	
Banking				
Audi Listed	2.66	6.40%	118.03%	
BLC Listed	0.93	0.00%	0.00%	
BOB Listed	17.8	0.00%	0.00%	
Byblos Listed	0.85	10.39%	60.38%	
BEMO Listed	1.2	0.00%	0.00%	
BLOM Listed	3.6	0.00%	73.91%	
Trading				
RYMCO	3.19	0.00%	0.00%	
Industrial				
Holcim	15.9	-3.05%	9.66%	
Ciments Blancs	5.2	0.00%	26.83%	

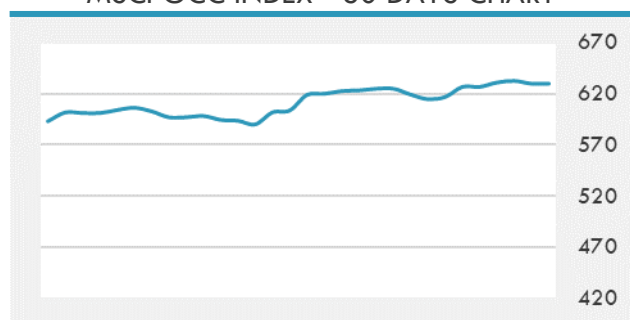
MSCI LEBANON INDEX - 30 DAYS CHART

LEBANESE USD SOVEREIGN CURVE


- Moody's rating agency warned Wednesday of grave consequences on the Lebanon's economy if the Central Bank's foreign currency reserves were depleted and if the relations between Lebanese banks and correspondent banks were severed.
- The UAE stock markets have closed Wednesday's trading session in the red zone. The benchmark index of the Dubai Financial Market went down 0.92% to settle at 2,599.95 points by the end of Wednesday's trading session.

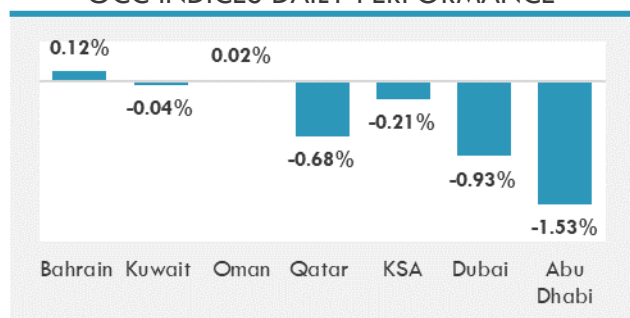
Source: Daily Star, Gulf Business, Mubasher, Bloomberg, Businessnews LB

GCC EQUITY INDICES

	Last Price	Daily %	YTD %
Bahrain	1483.45	0.12%	-0.42%
Kuwait	6018.63	-0.04%	8.52%
Oman	3697.35	0.02%	1.05%
Qatar	10839.93	-0.68%	3.87%
KSA	10095.36	-0.21%	16.18%
Dubai	2599.95	-0.93%	4.33%
Abu Dhabi	6061.31	-1.53%	20.14%

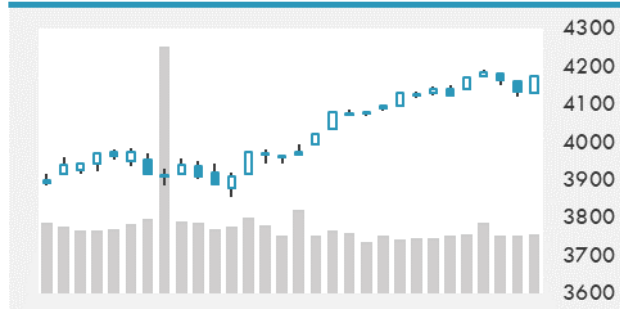
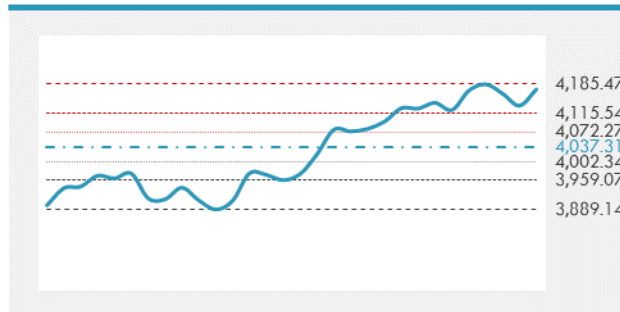
MSCI GCC INDEX - 30 DAYS CHART

LOCAL/GCC FOREIGN EXCHANGE

	Cross	Last Price
Lebanese Pound Spot	USD/LBP	1515.5
Bahraini Dinar Spot	USD/BHD	0.37699
Kuwaiti Dinar Spot	USD/KWD	0.30145
Omani Rial Spot	USD/OMR	0.38501
Qatari Riyal Spot	USD/QAR	3.6417
Saudi Riyal Spot	USD/SAR	3.7503
UAE Dirham Spot	USD/AED	3.6727

GCC INDICES DAILY PERFORMANCE


UNITED STATES EQUITY MARKET INDICES

	Last Price	Daily %	YTD %	Δ10D Vol
Major Indices				
Dow Jones	34137.31	0.00%	11.54%	0.99%
S&P 500	4173.42	0.00%	11.11%	0.80%
Nasdaq	13950.22	0.00%	8.24%	0.35%
Sectors Indices				
Discretionary	1424.56	0.00%	9.37%	1.08%
Staples	721.37	0.00%	3.60%	0.13%
Energy	360.5	0.00%	25.99%	1.40%
Financials	583.77	0.00%	19.03%	2.01%
Healthcare	1437.3	0.00%	8.56%	0.20%
Industrials	853.63	0.00%	13.89%	2.33%
IT	2499.55	0.00%	9.09%	-0.77%
Materials	521.37	0.00%	14.41%	2.49%
Com. Services	249.25	0.00%	12.32%	0.06%
Utilities	341.27	0.00%	6.96%	2.06%
Real Estate	263.51	0.00%	15.63%	-1.36%

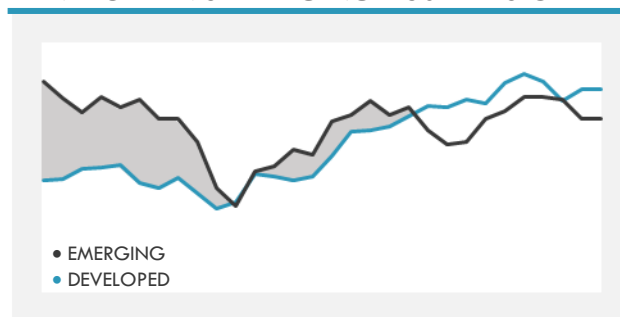
S&P 500 INDEX - 30 DAYS CHART

S&P 500 SUPPORT & RESISTANCE


- Futures contracts on the three major U.S. equity indexes were little changed, paring earlier declines as mixed sentiment among investors continued.
- European stocks rebounded from their biggest decline since December, boosted by positive earnings updates and optimism about the region's vaccine rollout.
- Asian stocks rebounded from their biggest two-day drop in a month as investors appeared to look past surging virus cases around the world and focus on an economic recovery.

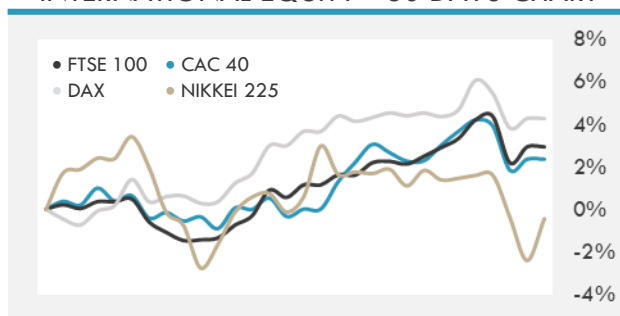
Source: Bloomberg, Financial Times, Reuters

INTERNATIONAL MARKETS INDICES

	Last Price	Daily %	YTD %	Δ10D Vol
World	1709.53	0.00%	8.30%	-0.09%
Developed	2932.98	0.00%	9.03%	0.12%
Emerging	1336.87	0.00%	3.53%	0.90%
Frontier	2508.37	0.00%	-3.22%	0.80%
Europe	144.6	0.00%	9.46%	0.18%
Latin America	2396.22	0.00%	-2.27%	0.51%
Asia Pacific	205.34	0.00%	2.71%	2.56%

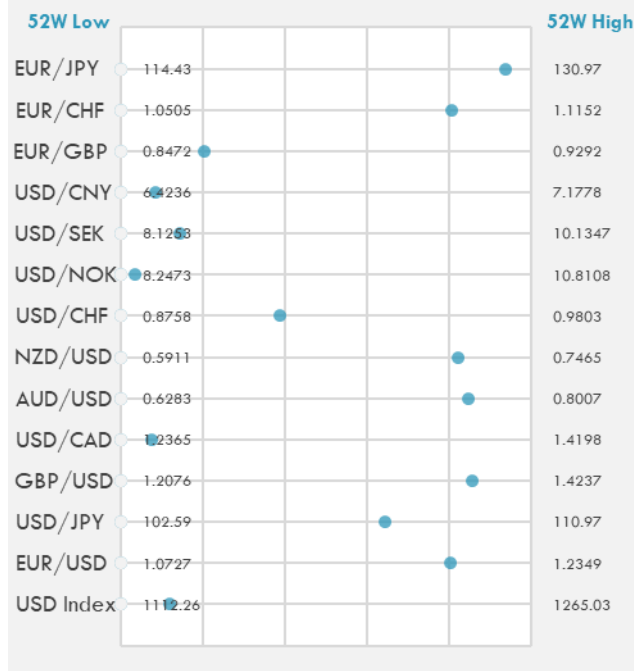
DEVELOPED VS EMERGING - 30 DAYS CHART

INTERNATIONAL EQUITY INDICES

	Last Price	Daily %	YTD %	Δ10D Vol
EuroStoxx 50	3976.41	0.00%	11.93%	0.65%
FTSE 100	6895.29	0.00%	6.73%	-0.52%
CAC 40	6210.55	0.00%	11.87%	0.22%
DAX	15195.97	0.00%	10.77%	0.22%
Swiss SMI	11209.09	0.00%	4.72%	1.32%
Nikkei 225	29085.3	2.02%	5.98%	3.25%
CSI 300	5087	-0.23%	-2.39%	0.06%

INTERNATIONAL EQUITY - 30 DAYS CHART


FOREIGN EXCHANGE MARKET

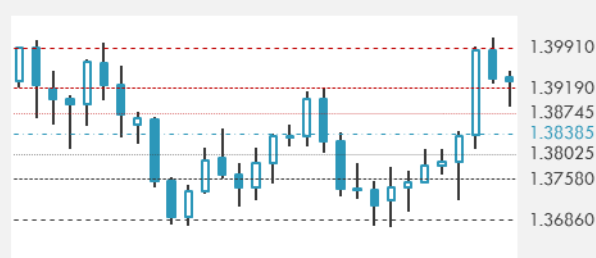
	Last Price	Daily %	Δ10D	Vol 25	ΔRR
Major USD Cross Rate					
USD Index	1130.65	0.04%	-0.18%	-	
EUR/USD	1.2032	-0.02%	-0.21%	0.175	
USD/JPY	107.98	-0.09%	-1.21%	-0.300	
GBP/USD	1.3928	-0.02%	-0.25%	-0.300	
USD/CAD	1.2505	0.06%	-0.09%	0.323	
AUD/USD	0.7742	-0.15%	-0.44%	-0.528	
NZD/USD	0.719	-0.32%	-0.02%	-0.430	
USD/CHF	0.9165	-0.05%	0.00%	-0.090	
USD/NOK	8.3399	0.03%	-0.65%	0.975	
USD/SEK	8.4133	0.05%	0.08%	0.473	
USD/CNY	6.4872	-0.05%	-0.20%	0.700	
Major EUR Cross Rate					
EUR/GBP	0.86388	-0.02%	-0.08%	0.155	
EUR/CHF	1.10276	-0.08%	-0.09%	0.088	
EUR/JPY	129.93	-0.13%	-0.44%	-0.343	

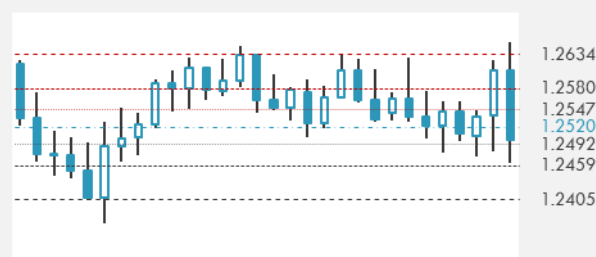
DISTANCE FROM 52 WEEKS LOW/HIGH


- Emerging Asian currencies rose, led by South Korea's won, after the yuan held above a key level.
- The dollar dropped against most of its Group-of-10 peers as Treasury yields continued to decline. The New Zealand dollar also fell.
- Australia's dollar is little changed after rising back toward the center of the week's trading range in New York amid a rebound in stocks.

Source: Bloomberg, Financial Times, Reuters

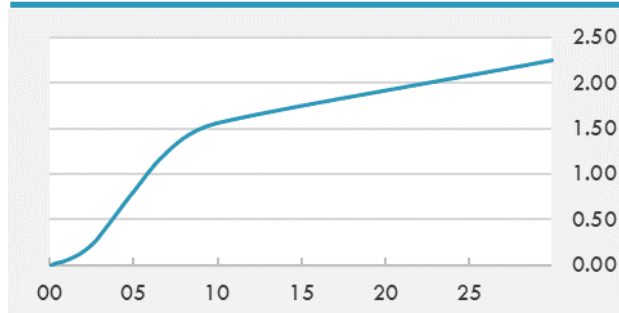
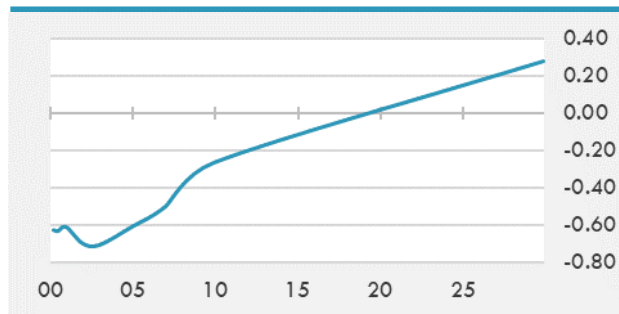
EUR/USD 30 DAYS SUPPORT & RESISTANCE

GBP/USD 30 DAYS SUPPORT & RESISTANCE

USD/JPY 30 DAYS SUPPORT & RESISTANCE

USD/CAD 30 DAYS SUPPORT & RESISTANCE


GLOBAL BOND INDICES

	Yield	ΔYield (in Bps)
Benchmark Indices		
US 10 Years Benchmark	1.5555	-0.003
EU 10 Years Benchmark	-0.262	0.000
UK 10 Years Benchmark	0.74	0.009
Sovereign Bonds		
US Treasury Bond	0.594	0
Eurozone Sovereign Bond	-0.428	0
Japan Sovereign Bond	-0.104	0
Corporate Bonds		
US Corporate TR	2.167	-0.011
US High Yield Bond TR	4.064	-0.019
EUR Aggregate Corporate TR	0.329	-0.006
EUR High Yield TR	3.106	0.013
USD Emerging Market IG & HY	3.891	-0.007

US TREASURIES YIELD CURVE

EUR GENERIC YIELD CURVE


- Treasuries push higher in robust volumes, with activity focused in the 20-year futures, which continue to rally with follow-through buying after Wednesday's sale. Weekly Japan data shows more overseas bond demand from Japan. Aussie bonds are underpinned, pushing higher into RBA's QE operation.
- Euro zone bond yields held below recent highs on Wednesday, a day ahead of a European Central Bank meeting and after Germany's constitutional court dismissed challenges to its approval of the EU recovery fund.

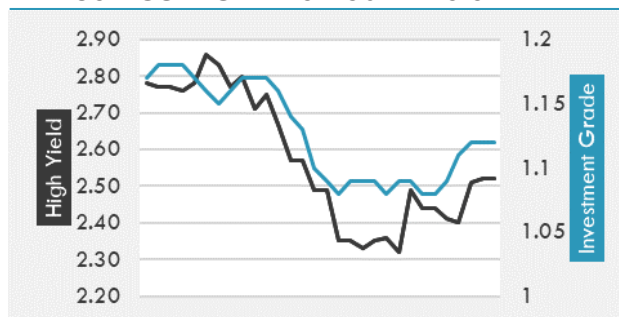
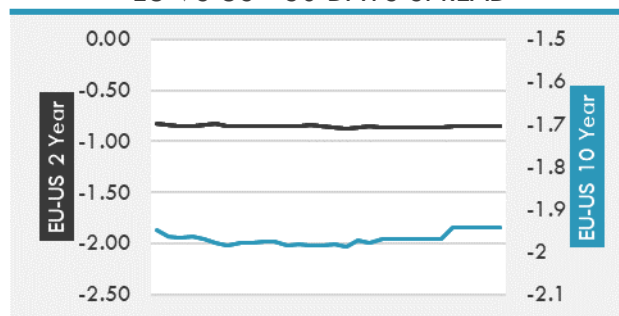
Source: Bloomberg, Financial Times, Economic times, Reuters

OVERNIGHT RATES - SWAPS

	Yield	ΔYield (in Bps)
3M USD LIBOR	0.184	0.000
3M EUR EURIBOR	-0.538	0.000
3M GBP LIBOR	0.086	0.000
3Y USD SWAP	0.447	0.003
5Y USD SWAP	0.886	0.002
10Y USD SWAP	1.549	-0.001
30Y USD SWAP	1.984	0.004

FIXED INCOME SPREADS

	Spread	ΔSpread (in Bps)
USD 3M vs 10Y Spread	1.530	-0.006
USD 2Y vs 10Y Spread	1.406	-0.001
USD IG Spread	1.120	0.000
USD HY Spread	2.520	0.010
EU vs US 10Y Spread	-1.842	0.000
EU vs US 2Y Spread	-0.852	0.000
EM vs Benchmark Spread	274.800	-0.700

USD CORPORATES - 30 DAYS SPREAD

EU VS US - 30 DAYS SPREAD


GLOBAL COMMODITIES MARKET

	Last Price	Daily %
Commodity Index	87.31	0.05%

Energy

WTI Crude Future	61.08	-0.44%
Brent Crude Future	65.13	-0.29%
NYMEX Gasoline	197.35	-0.50%
NYMEX Heat Oil	184.9	-0.25%
ICE Gasoil	517.25	-0.58%
NYMEX Natural Gas	2.702	0.37%

Precious Metals

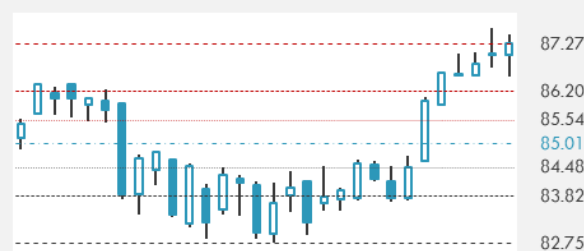
Gold Spot \$/Oz	1794.18	0.02%
Silver Spot \$/Oz	26.4929	-0.23%
Platinum Spot \$/Oz	1215.61	0.11%
Palladium Spot \$/Oz	2874.02	-0.08%
Gold Future	1794.3	0.07%
Silver Future	26.6	-0.02%
Platinum Future	1216.6	0.16%
Palladium Future	2869.5	-0.21%

Base Metals

LME Aluminum	2365	0.00%
LME Copper	9445	0.00%
LME Zinc	2815	0.00%
LME Nickel	16199	0.00%
LME Lead	2024	0.00%
LME Tin	26939	0.00%

Agricultural

Corn CBT	611.25	0.78%
Wheat CBT	679.25	0.63%
Soybeans CBT	1494.75	1.03%
Bean Meal CBT	417.3	0.29%
Rough Rice CBT	13.165	0.00%
MDE Palm Oil	3951	1.46%
Soybean CBT	57.7	1.33%
Coffee ICE	134.2	0.00%
Sugar #11 ICE	16.89	0.00%
Cotton #2 ICE	86.98	0.87%
Cocoa ICE	2439	0.00%
Ethanol CME	2.199	0.00%
Lumber CME	1158.6	0.00%
Orange Juice ICE	116.55	0.00%
Live Cattle CME	117.25	0.00%
Feeder Cattle CME	151.925	0.00%
Lean Hogs CME	104.525	0.00%

COMMODITY INDEX SUPPORT & RESISTANCE

WTI OIL 30 DAYS SUPPORT & RESISTANCE


- Oil fell for a third day after data showed a rise in U.S. stockpiles and investors fretted over an uneven recovery in global demand.
- Gold gained as bond yields stabilized, with the metal gaining technical support amid concerns about a deteriorating virus situation.

Source: Bloomberg, Reuters

GOLD 30 DAYS SUPPORT & RESISTANCE

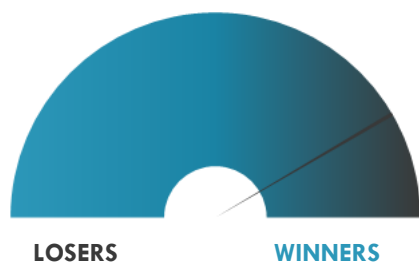
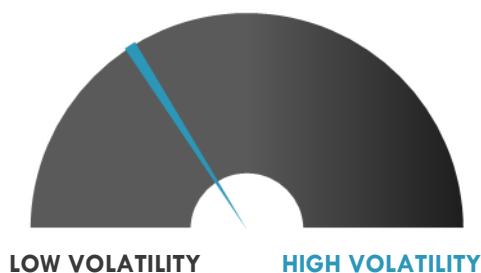
SILVER 30 DAYS SUPPORT & RESISTANCE


TOP 10 WINNERS

	Ticker	Last Price	Daily %
S&P 500 Stocks			
DISH Network Corp	DISH	40.94	+10.98%
Norwegian Cruise Line	NCLH	29.51	+10.32%
Intuitive Surgical Inc	ISRG	891.38	+9.90%
Discovery Inc	DISCA	38.48	+8.49%
ViacomCBS Inc	VIAC	40.85	+7.73%
Discovery Inc	DISCK	32.33	+7.05%
Carnival Corp	CCL	27.33	+6.26%
Edwards Lifesciences	EW	95.24	+6.26%
PVH Corp	PVH	107.55	+5.54%
Enphase Energy Inc	ENPH	155.08	+5.50%

TOP 10 LOSERS

	Ticker	Last Price	Daily %
S&P 500 Stocks			
Netflix Inc	NFLX	508.9	-7.40%
Halliburton Co	HAL	19.1	-3.58%
Oracle Corp	ORCL	76.66	-3.26%
NextEra Energy Inc	NEE	77.97	-3.18%
NVR Inc	NVR	4800	-2.17%
WEC Energy Group Inc	WEC	97.28	-1.89%
AutoZone Inc	AZO	1486.89	-1.80%
Zebra Technologies	ZBRA	491.37	-1.64%
Chipotle Mexican Grill	CMG	1507.62	-1.60%
Activision Blizzard Inc	ATVI	93.18	-1.37%

S&P 500 DISTRIBUTION

S&P VOLATILITY INDEX


- CF Industries +2.2% post-market after signing an engineering and procurement contract with Thyssenkrupp to supply a 20 MW alkaline water electrolysis plant to produce green hydrogen at its Donaldsonville, La., manufacturing complex.
- Netgear has dipped 2.6% after hours following its Q1 earnings, where the company topped expectations but guided to Q2 revenues below consensus.
- Kinder Morgan +3.2% post-market after reporting better than expected Q1 earnings and revenues, and raising its quarterly dividend by 3% to \$0.27/share.
- Churchill Downs soars in AH trading after sailing past consensus marks for revenue, sales and EBITDA with its Q1 report.
- Qualtrics tops first quarter estimates with \$238.6M in revenue, up 36% on the year and about \$11M ahead of estimates, and EPS of \$0.01, four cents better than expected.
- Las Vegas Sands traded slightly lower after posting a 15.6% drop in revenue in Q1 and an operating loss of \$96M. Net income from continuing operations was \$280M during the quarter vs. \$92M a year ago.
- Lam Research reports fiscal Q3 beats with overall revenue up 55% on the year to \$3.85B and \$7.49 EPS, \$0.88 ahead of consensus. Lam shares were down 1% after hours after ending the day up 4.6%.
- NeuBase Therapeutics traded 6.7% down after hours on commencing an underwritten public offering of shares; underwriters granted 30-day option to purchase up to an additional 15% of the shares.

KEY ECONOMIC INDICATORS

Country	Event	Surv (M)	Actual	Prior	Time
Australia	NAB Business Confidence	--	17	14	4:30
Eurozone	ECB Main Refinancing Rate	0.00%	--	0.00%	14:45
Eurozone	ECB Deposit Facility Rate	-0.50%	--	-0.50%	14:45
Eurozone	ECB Marginal Lending Facility	0.25%	--	0.25%	14:45
Eurozone	Consumer Confidence	-11	--	-10.8	17:00
Eurozone	Govt Debt/GDP Ratio	--	--	84.00%	12:00
France	Manufacturing Confidence	99	--	98	9:45
Ireland	PPI MoM	--	--	0.70%	13:00
Ireland	PPI YoY	--	--	-14.00%	13:00
Japan	Japan Buying Foreign Bonds	--	9.07E+11	1.71E+12	2:50
Japan	Foreign Buying Japan Stocks	--	2.86E+11	6.41E+11	2:50
Netherlands	Unemployment Rate	--	3.50%	3.60%	7:30
Netherlands	Consumer Spending YoY	--	-10.70%	-13.50%	7:30
Netherlands	House Price Index MoM	--	1.60%	1.20%	2:11
United States	Initial Jobless Claims	610000	--	576000	15:30
United States	Existing Home Sales	6.11E+06	--	6.22E+06	17:00
United States	Leading Index	1.00%	--	0.20%	17:00
United States	Continuing Claims	3.60E+06	--	3.73E+06	15:30
United States	Langer Consumer Comfort	--	--	53.9	16:45
United States	Chicago Fed Nat Activity Index	1.25	--	-1.09	15:30

Source: Bloomberg

Banque BEMO sal

Head Office - Private and Corporate Banking

Elias Sarkis Ave., Bemo Bldg , Ashrafieh - Lebanon
Tel: +961 1 200 505 Fax: +961 1 217 860

Research & Development research@bemobank.com

Elias Sarkis Ave., Bemo Bldg , Ashrafieh - Lebanon
Tel: +961 1 200 505 Fax: +961 1 217 860

Disclaimer:

This report is published for information purposes only. The information herein has been compiled from, or based upon sources considered to be reliable (Bloomberg, SeekingAlpha, DailyStar...), but we do not guarantee or assume responsibility for its completeness and accuracy. This document should not be construed as a solicitation to take part in any investment, or as constituting any representation or warranty on our part. This report is not to be relied upon in substitution for the exercise of specialists.

We may not have taken any steps to ensure that the securities referred to in this report are suitable for any particular investor. The investments and services contained or referred to herein are not purported to be exhaustive, any person considering an investment should seek specialist advice on the suitability of an investment.

Nothing in this report constitutes investment, legal, accounting or tax advice, or a representation that any investment or strategy is suitable or appropriate to your individual circumstances, or otherwise constitutes a personal recommendation. Clients understand that it is their responsibility to seek legal and/or tax advice regarding the legal and tax consequences of their investment transactions. The consequences of any action taken on the basis of information contained herein are solely the responsibility of the recipient.

Investment instruments are subject to risk, including possible loss of principal amount invested. Past performance should not be taken as an indication or guarantee of future performance, and no representation or warranty, express or implied, is made regarding future performance. The value of securities and financial instruments is subject to exchange rate fluctuation that may have a positive or adverse effect on the price or income of such securities or financial instruments. Some investments mentioned in this report may have a high level of volatility. High volatility investments may experience sudden and large falls in their value causing losses when that investment is realized. Some investments may not be readily realizable and it may be difficult to sell or realize those investments, similarly it may prove difficult to obtain reliable information about the value, or risks, to which such an investment is exposed.

This report may provide the addresses of websites or references. We have not reviewed any such site and takes no responsibility for the content contained therein. Such address or reference is provided solely for convenience and information. Accessing such website through this report shall be at the recipients own risk.