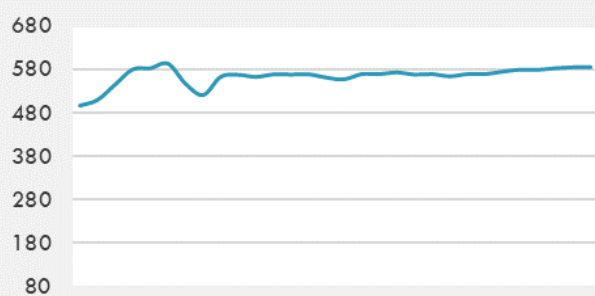
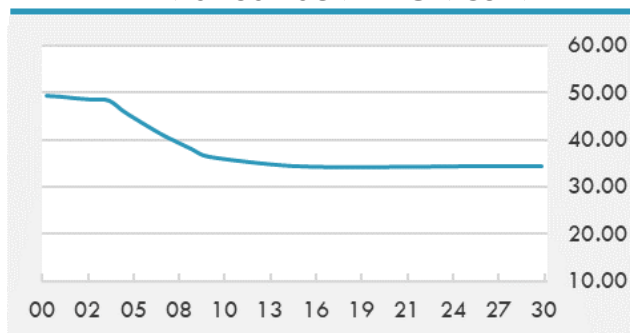


**BEIRUT STOCK EXCHANGE**

|                                       | Last   | Daily % | YTD %   | Dividend % |
|---------------------------------------|--------|---------|---------|------------|
| MSCI Lebanon                          | 585.28 | 0.39%   | 33.70%  |            |
| <b>Development and Reconstruction</b> |        |         |         |            |
| Solidere A                            | 24.74  | 0.69%   | 33.73%  |            |
| Solidere B                            | 24.44  | -0.53%  | 33.62%  |            |
| <b>Banking</b>                        |        |         |         |            |
| Audi Listed                           | 2.61   | 0.00%   | 113.93% |            |
| BLC Listed                            | 0.93   | 0.00%   | 0.00%   |            |
| BOB Listed                            | 17.8   | 0.00%   | 0.00%   |            |
| Byblos Listed                         | 0.85   | 0.00%   | 60.38%  |            |
| BEMO Listed                           | 1.2    | 0.00%   | 0.00%   |            |
| BLOM Listed                           | 3.6    | 0.00%   | 73.91%  |            |
| <b>Trading</b>                        |        |         |         |            |
| RYMCO                                 | 3.19   | 0.00%   | 0.00%   |            |
| <b>Industrial</b>                     |        |         |         |            |
| Holcim                                | 15.9   | 0.00%   | 9.66%   |            |
| Ciments Blancs                        | 5.2    | 0.00%   | 26.83%  |            |

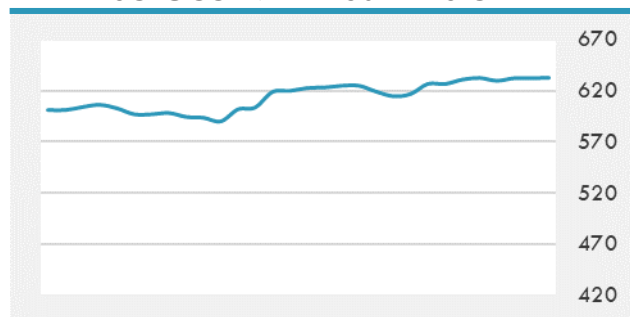
**MSCI LEBANON INDEX - 30 DAYS CHART**

**LEBANESE USD SOVEREIGN CURVE**


- Consumer prices in Lebanon continued to surge dramatically as the authorities still contemplate ways to lift the subsidies gradually and issue new prepaid cards for low income families. The Central Administration of Statistics said Consumer Price Index increased by 151.5 percent in the first two months of 2021 from the same period of 2020.
- Qatar petroleum plans \$10 billion bond sale for gas expansion. The state producer is inviting banks to arrange what would be its first dollar bonds and is seeking between \$7 billion and \$10 billion of five, 10- and 30-year notes.

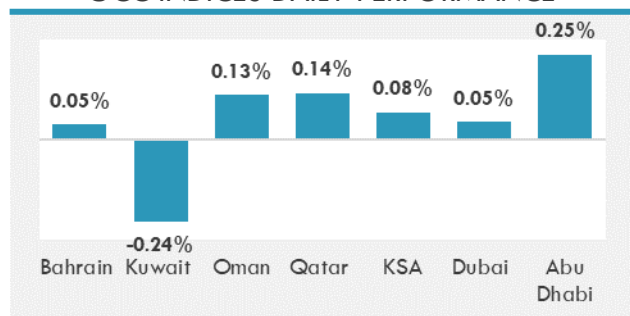
Source: Daily Star, Gulf Business, Mubasher, Bloomberg, Businessnews LB

**GCC EQUITY INDICES**

|           | Last Price | Daily % | YTD %  |
|-----------|------------|---------|--------|
| Bahrain   | 1486.29    | 0.05%   | -0.19% |
| Kuwait    | 6028.97    | -0.24%  | 8.44%  |
| Oman      | 3724.19    | 0.13%   | 1.79%  |
| Qatar     | 10860.11   | 0.14%   | 4.06%  |
| KSA       | 10142.48   | 0.08%   | 16.72% |
| Dubai     | 2627.12    | 0.05%   | 5.42%  |
| Abu Dhabi | 6117.17    | 0.25%   | 21.24% |

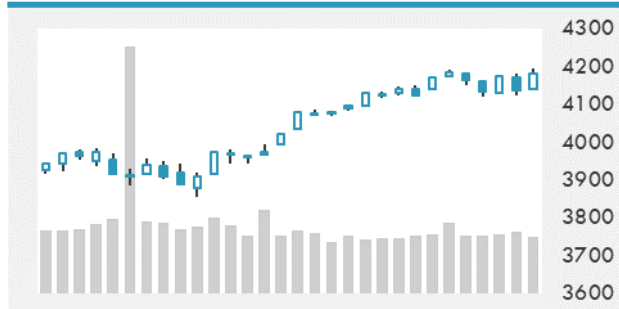
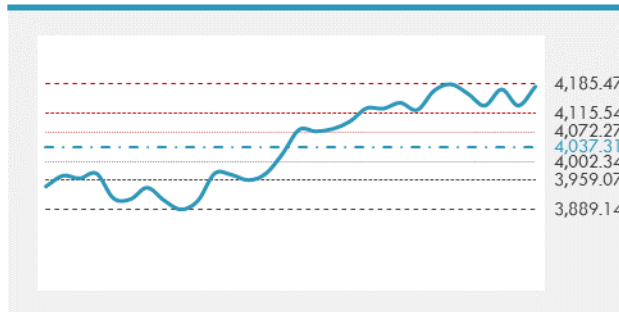
**MSCI GCC INDEX - 30 DAYS CHART**

**LOCAL/GCC FOREIGN EXCHANGE**

|                     | Cross   | Last Price |
|---------------------|---------|------------|
| Lebanese Pound Spot | USD/LBP | 1515.5     |
| Bahraini Dinar Spot | USD/BHD | 0.377      |
| Kuwaiti Dinar Spot  | USD/KWD | 0.3011     |
| Omani Rial Spot     | USD/OMR | 0.38502    |
| Qatari Riyal Spot   | USD/QAR | 3.641      |
| Saudi Riyal Spot    | USD/SAR | 3.7502     |
| UAE Dirham Spot     | USD/AED | 3.673      |

**GCC INDICES DAILY PERFORMANCE**


**UNITED STATES EQUITY MARKET INDICES**

|                        | Last Price | Daily % | YTD %  | Δ10D Vol |
|------------------------|------------|---------|--------|----------|
| <b>Major Indices</b>   |            |         |        |          |
| Dow Jones              | 34043.49   | 0.00%   | 11.23% | 0.50%    |
| S&P 500                | 4180.17    | 0.00%   | 11.29% | 1.34%    |
| Nasdaq                 | 14016.81   | 0.00%   | 8.76%  | 1.71%    |
| <b>Sectors Indices</b> |            |         |        |          |
| Discretionary          | 1422.50    | 0.00%   | 9.21%  | 0.66%    |
| Staples                | 714.11     | 0.00%   | 2.55%  | -0.13%   |
| Energy                 | 358.74     | 0.00%   | 25.37% | 0.37%    |
| Financials             | 587.97     | 0.00%   | 19.89% | 2.98%    |
| Healthcare             | 1440.34    | 0.00%   | 8.79%  | -0.23%   |
| Industrials            | 858.65     | 0.00%   | 14.56% | 1.30%    |
| IT                     | 2505.73    | 0.00%   | 9.36%  | 1.56%    |
| Materials              | 520.87     | 0.00%   | 14.30% | 1.59%    |
| Com. Services          | 250.35     | 0.00%   | 12.81% | 1.73%    |
| Utilities              | 338.32     | 0.00%   | 6.03%  | 0.20%    |
| Real Estate            | 264.05     | 0.00%   | 15.86% | 0.01%    |

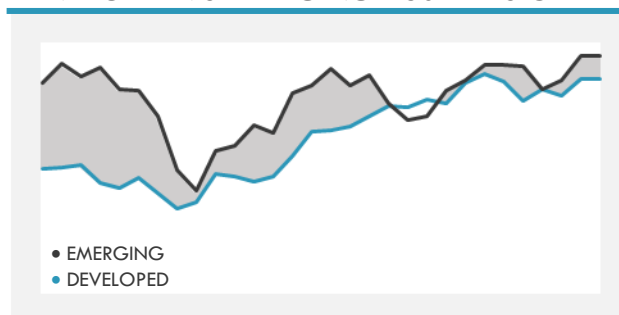
**S&P 500 INDEX - 30 DAYS CHART**

**S&P 500 SUPPORT & RESISTANCE**


- U.S. index futures advanced, signaling a rebound from Thursday's declines that followed a report on a proposal for higher taxes.
- European equities had their first weekly decline in eight weeks as investors weighed risks to the rally from U.S. President Joe Biden's tax proposal and rising coronavirus infections in Asia, despite the strong start to the earnings season.
- Asia stocks rose as investors continued to keep a close eye on the ongoing earnings season globally and U.S. data for clues on economic recovery.

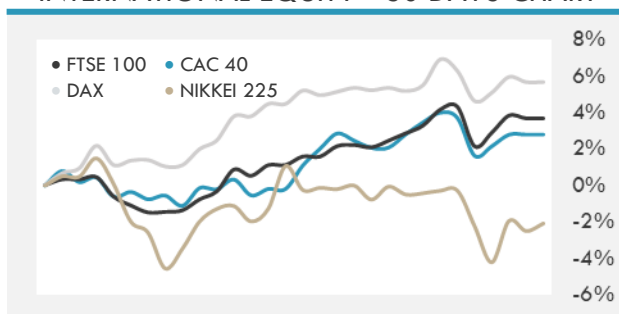
Source: Bloomberg, Financial Times, Reuters

**INTERNATIONAL MARKETS INDICES**

|               | Last Price | Daily % | YTD %  | Δ10D Vol |
|---------------|------------|---------|--------|----------|
| World         | 1718.81    | 0.00%   | 8.89%  | 0.68%    |
| Developed     | 2946.11    | 0.00%   | 9.52%  | 0.66%    |
| Emerging      | 1353.02    | 0.00%   | 4.78%  | -0.25%   |
| Frontier      | 2482.81    | 0.00%   | -4.21% | 0.03%    |
| Europe        | 145.32     | 0.00%   | 10.01% | -0.25%   |
| Latin America | 2417.05    | 0.00%   | -1.42% | 0.17%    |
| Asia Pacific  | 208.12     | 0.00%   | 4.10%  | -0.44%   |

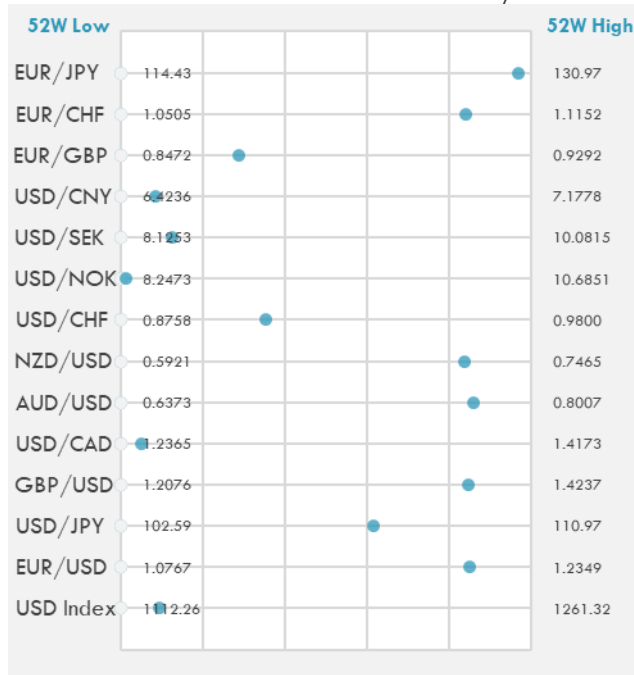
**DEVELOPED VS EMERGING - 30 DAYS CHART**

**INTERNATIONAL EQUITY INDICES**

|              | Last Price | Daily % | YTD %  | Δ10D Vol |
|--------------|------------|---------|--------|----------|
| EuroStoxx 50 | 4013.34    | 0.00%   | 12.97% | -0.29%   |
| FTSE 100     | 6938.56    | 0.00%   | 7.40%  | -0.23%   |
| CAC 40       | 6257.94    | 0.00%   | 12.73% | 0.02%    |
| DAX          | 15279.62   | 0.00%   | 11.38% | 0.09%    |
| Swiss SMI    | 11200.54   | 0.00%   | 4.64%  | -0.31%   |
| Nikkei 225   | 29145.36   | 0.43%   | 6.20%  | -0.14%   |
| CSI 300      | 5147.99    | 0.24%   | -1.21% | -3.67%   |

**INTERNATIONAL EQUITY - 30 DAYS CHART**


**FOREIGN EXCHANGE MARKET**

|                             | Last Price | Daily % | Δ10D   | Vol 25 | ΔRR |
|-----------------------------|------------|---------|--------|--------|-----|
| <b>Major USD Cross Rate</b> |            |         |        |        |     |
| USD Index                   | 1126.13    | -0.13%  | -0.11% | -      |     |
| EUR/USD                     | 1.211      | 0.11%   | -0.07% | 0.205  |     |
| USD/JPY                     | 107.74     | -0.13%  | -0.13% | -0.393 |     |
| GBP/USD                     | 1.3906     | 0.22%   | 0.01%  | -0.308 |     |
| USD/CAD                     | 1.2454     | -0.18%  | -0.02% | 0.388  |     |
| AUD/USD                     | 0.7778     | 0.50%   | 0.19%  | -0.460 |     |
| NZD/USD                     | 0.7215     | 0.22%   | -0.01% | -0.378 |     |
| USD/CHF                     | 0.9125     | -0.16%  | -0.03% | -0.098 |     |
| USD/NOK                     | 8.2760     | -0.23%  | 0.00%  | 0.953  |     |
| USD/SEK                     | 8.3707     | -0.18%  | -0.78% | 0.445  |     |
| USD/CNY                     | 6.4883     | -0.12%  | 0.00%  | 0.700  |     |
| <b>Major EUR Cross Rate</b> |            |         |        |        |     |
| EUR/GBP                     | 0.87084    | -0.07%  | -0.07% | 0.148  |     |
| EUR/CHF                     | 1.10498    | -0.03%  | 0.01%  | 0.088  |     |
| EUR/JPY                     | 130.47     | -0.02%  | 0.01%  | -0.350 |     |

**DISTANCE FROM 52 WEEKS LOW/HIGH**


- Australian dollar builds on opening gains as fast money funds chase the currency higher amid strong gains in stocks and iron ore.
- South Korea's won led gains in emerging Asian currencies as strong U.S. data boosted risk appetite.
- China's yuan advances amid growing confidence over an economic recovery. An indicator for interbank funding costs climbs as demand for liquidity rises ahead of public holidays next week.

Source: Bloomberg, Financial Times, Reuters

**EUR/USD 30 DAYS SUPPORT & RESISTANCE**

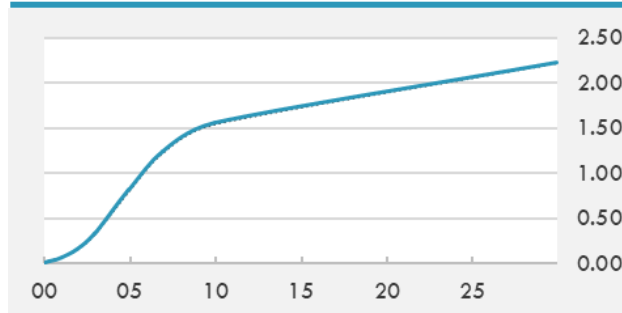
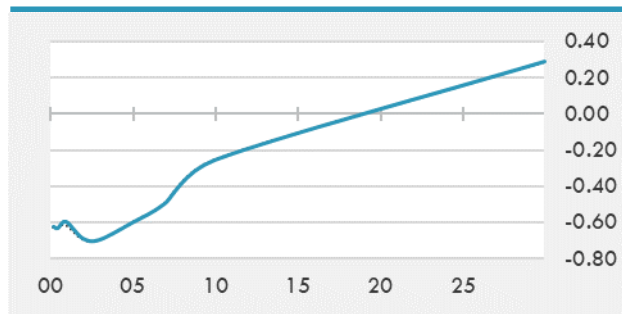
**GBP/USD 30 DAYS SUPPORT & RESISTANCE**

**USD/JPY 30 DAYS SUPPORT & RESISTANCE**

**USD/CAD 30 DAYS SUPPORT & RESISTANCE**


**GLOBAL BOND INDICES**

|                             | Yield  | ΔYield (in Bps) |
|-----------------------------|--------|-----------------|
| <b>Benchmark Indices</b>    |        |                 |
| US 10 Years Benchmark       | 1.5577 | 0.020           |
| EU 10 Years Benchmark       | -0.257 | -0.005          |
| UK 10 Years Benchmark       | 0.744  | 0.004           |
| <b>Sovereign Bonds</b>      |        |                 |
| US Treasury Bond            | 0.594  | 0               |
| Eurozone Sovereign Bond     | -0.428 | 0               |
| Japan Sovereign Bond        | -0.104 | 0               |
| <b>Corporate Bonds</b>      |        |                 |
| US Corporate TR             | 2.158  | 0.000           |
| US High Yield Bond TR       | 4.039  | -0.044          |
| EUR Aggregate Corporate TR  | 0.332  | 0.002           |
| EUR High Yield TR           | 3.092  | 0.021           |
| USD Emerging Market IG & HY | 3.879  | 0.004           |

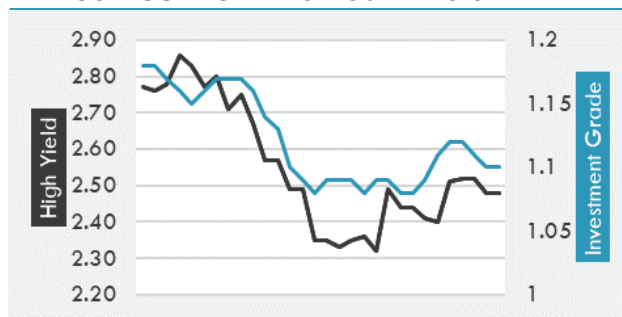
**US TREASURIES YIELD CURVE**

**EUR GENERIC YIELD CURVE**


- Treasuries are under modest pressure ahead of this week's front-loaded supply. Activity has been light in bonds.
- JGB futures are a touch lower as Nikkei rebounded. BOJ's buying across 1-10y bonds saw a muted reaction.
- Aussie bonds marginally outperformed Treasuries as RBA offers to buy A\$2b across 5-7y bonds as part of QE program.

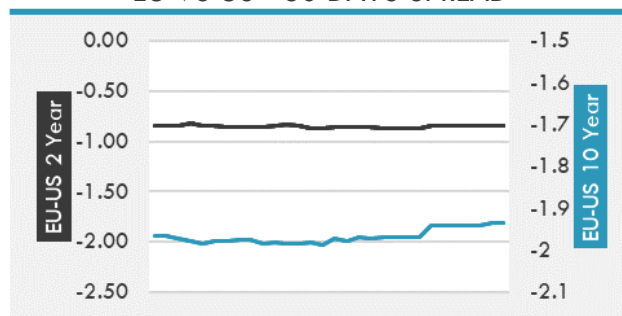
Source: Bloomberg, Financial Times, Economic times, Reuters

**OVERNIGHT RATES - SWAPS**

|                | Yield  | ΔYield (in Bps) |
|----------------|--------|-----------------|
| 3M USD LIBOR   | 0.181  | 0.006           |
| 3M EUR EURIBOR | -0.539 | 0.000           |
| 3M GBP LIBOR   | 0.089  | 0.001           |
| 3Y USD SWAP    | 0.471  | 0.019           |
| 5Y USD SWAP    | 0.915  | 0.027           |
| 10Y USD SWAP   | 1.558  | 0.018           |
| 30Y USD SWAP   | 1.973  | 0.013           |

**USD CORPORATES - 30 DAYS SPREAD**

**FIXED INCOME SPREADS**

|                        | Spread  | ΔSpread (in Bps) |
|------------------------|---------|------------------|
| USD 3M vs 10Y Spread   | 1.537   | 0.020            |
| USD 2Y vs 10Y Spread   | 1.398   | 0.011            |
| USD IG Spread          | 1.100   | -0.010           |
| USD HY Spread          | 2.480   | -0.040           |
| EU vs US 10Y Spread    | -1.815  | 0.027            |
| EU vs US 2Y Spread     | -0.848  | 0.004            |
| EM vs Benchmark Spread | 274.000 | -0.800           |

**EU VS US - 30 DAYS SPREAD**


**GLOBAL COMMODITIES MARKET**

|                 | Last Price | Daily % |
|-----------------|------------|---------|
| Commodity Index | 88.65      | 0.29%   |

**Energy**

|                    |        |        |
|--------------------|--------|--------|
| WTI Crude Future   | 61.87  | -0.43% |
| Brent Crude Future | 65.69  | -0.64% |
| NYMEX Gasoline     | 198.31 | -0.63% |
| NYMEX Heat Oil     | 186.84 | -0.27% |
| ICE Gasoil         | 522.75 | -0.43% |
| NYMEX Natural Gas  | 2.719  | -0.40% |

**Precious Metals**

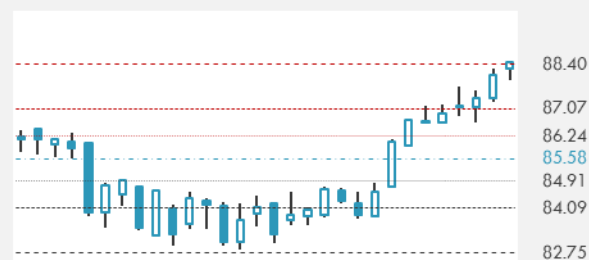
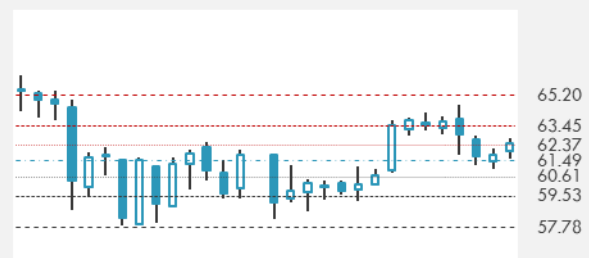
|                      |         |       |
|----------------------|---------|-------|
| Gold Spot \$/Oz      | 1783.36 | 0.35% |
| Silver Spot \$/Oz    | 26.1103 | 0.40% |
| Platinum Spot \$/Oz  | 1237.29 | 0.44% |
| Palladium Spot \$/Oz | 2872.27 | 0.43% |
| Gold Future          | 1782.9  | 0.29% |
| Silver Future        | 26.2    | 0.33% |
| Platinum Future      | 1240    | 0.56% |
| Palladium Future     | 2873.5  | 0.58% |

**Base Metals**

|              |       |       |
|--------------|-------|-------|
| LME Aluminum | 2365  | 0.00% |
| LME Copper   | 9552  | 0.00% |
| LME Zinc     | 2852  | 0.00% |
| LME Nickel   | 16395 | 0.00% |
| LME Lead     | 2058  | 0.00% |
| LME Tin      | 26780 | 0.00% |

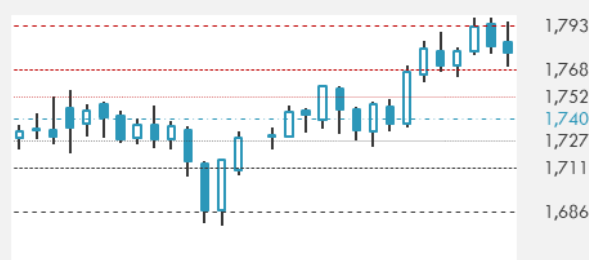
**Agricultural**

|                   |         |        |
|-------------------|---------|--------|
| Corn CBT          | 641.75  | 1.46%  |
| Wheat CBT         | 726.75  | 2.04%  |
| Soybeans CBT      | 1520.5  | 0.30%  |
| Bean Meal CBT     | 426.3   | 0.12%  |
| Rough Rice CBT    | 13.79   | 0.44%  |
| MDE Palm Oil      | 3901    | -0.66% |
| Soybean CBT       | 59.25   | 0.80%  |
| Coffee ICE        | 138.5   | 0.00%  |
| Sugar #11 ICE     | 16.88   | 0.00%  |
| Cotton #2 ICE     | 88.99   | 0.21%  |
| Cocoa ICE         | 2450    | 0.00%  |
| Ethanol CME       | 2.199   | 0.00%  |
| Lumber CME        | 1238.6  | 0.00%  |
| Orange Juice ICE  | 115.95  | 0.00%  |
| Live Cattle CME   | 115.725 | 0.00%  |
| Feeder Cattle CME | 149.9   | 0.00%  |
| Lean Hogs CME     | 105.725 | 0.00%  |

**COMMODITY INDEX SUPPORT & RESISTANCE**

**WTI OIL 30 DAYS SUPPORT & RESISTANCE**


- Oil prices fell on Monday on fears that surging COVID-19 cases in India will drive down fuel demand in the world's third biggest oil importer.
- Gold edged higher as investors turned their focus to a Federal Reserve meeting and more U.S. economic data due later this week.

Source: Bloomberg, Reuters

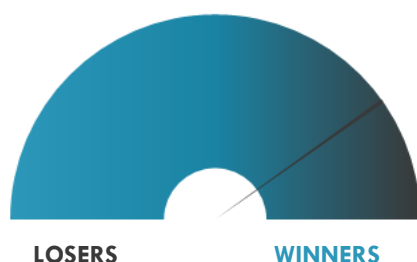
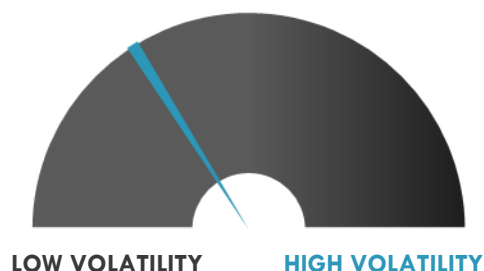
**GOLD 30 DAYS SUPPORT & RESISTANCE**

**SILVER 30 DAYS SUPPORT & RESISTANCE**


**TOP 10 WINNERS**

|                           | Ticker | Last Price | Daily % |
|---------------------------|--------|------------|---------|
| <b>S&amp;P 500 Stocks</b> |        |            |         |
| SVB Financial Group       | SIVB   | 564.22     | +8.72%  |
| Seagate Technology        | STX    | 89.15      | +6.03%  |
| Xilinx Inc                | XLNX   | 129.66     | +5.35%  |
| American Airlines Group   | AAL    | 21.11      | +5.18%  |
| Freeport-McMoRan Inc      | FCX    | 36.54      | +5.18%  |
| Advanced Micro Devices    | AMD    | 82.76      | +4.68%  |
| Aptiv PLC                 | APTIV  | 144.89     | +4.29%  |
| Twitter Inc               | TWTR   | 67.02      | +4.21%  |
| Teradyne Inc              | TER    | 131.53     | +4.12%  |
| Skyworks Solutions Inc    | SWKS   | 190.92     | +4.09%  |

**TOP 10 LOSERS**

|                           | Ticker | Last Price | Daily % |
|---------------------------|--------|------------|---------|
| <b>S&amp;P 500 Stocks</b> |        |            |         |
| Kimberly-Clark Corp       | KMB    | 132.11     | -5.86%  |
| Intel Corp                | INTC   | 59.24      | -5.32%  |
| Clorox Co/The             | CLX    | 188.54     | -3.35%  |
| Church & Dwight Co Inc    | CHD    | 87.56      | -2.31%  |
| Honeywell International   | HON    | 224.5      | -2.08%  |
| American Express Co       | AXP    | 144.33     | -1.92%  |
| Perrigo Co PLC            | PRGO   | 41.83      | -1.88%  |
| Quest Diagnostics Inc     | DGX    | 131.21     | -1.86%  |
| J M Smucker Co/The        | SJM    | 129.77     | -1.77%  |
| Hologic Inc               | HOLX   | 73.36      | -1.77%  |

**S&P 500 DISTRIBUTION**

**S&P VOLATILITY INDEX**


- Chilean regulators have settled a dispute over lithium reserves data with Albemarle, Reuters reports, easing tensions that may have led to the suspension of the miner's permit to expand its operations in Chile.
- Kansas City Southern is reportedly expected to indicate in the coming days that Canadian National Railway's bid would likely lead to a superior offer than Canadian Pacific's announced deal. KSU gained 1.3%, Canadian National fell 0.6%. Canadian Pacific gained 1.4%.
- Continental Resources and Cimarex Energy are on the rise after Raymond James upgrades shares, seeing more room to run for the pair heading into earnings.
- Honeywell remains mired in the red after Q1 results showed its two largest businesses continued to struggle with the effects of the pandemic.
- HC2 Holdings is up 9.2% on elevated trading volume, a lot of which has been spurred by a large insider purchase.
- Frontier Communications is laying out the agenda for its emergence from Chapter 11 bankruptcy, now expected in just one week (on April 30).
- Shares of Brooklyn ImmunoTherapeutics hit a new 52-week high and are currently up 37%. Shares are up nearly 97% in the last five days alone. Earlier this month, the company acquired a license for a mRNA technology platform and brought in a new CEO.
- Simplicity Esports and Gaming (-2.8%) opened the recently acquired gaming centers in Fullerton, CA and Vancouver, WA.



**KEY ECONOMIC INDICATORS**

| Country       | Event                                | Surv (M) | Actual | Prior  | Time  |
|---------------|--------------------------------------|----------|--------|--------|-------|
| Belgium       | Business Confidence                  | 1.8      | --     | -1     | 16:00 |
| Canada        | Bloomberg Nanos Confidence           | --       | --     | 63.6   | 15:00 |
| Finland       | PPI MoM                              | --       | 1.40%  | 1.70%  | 8:00  |
| Finland       | PPI YoY                              | --       | 6.70%  | 2.00%  | 8:00  |
| Germany       | IFO Business Climate                 | 97.8     | --     | 96.6   | 11:00 |
| Germany       | IFO Expectations                     | 101.2    | --     | 100.4  | 11:00 |
| Germany       | IFO Current Assessment               | 94.4     | --     | 93     | 11:00 |
| Ireland       | Bank of Ireland Economic Pulse       | --       | 85.4   | 73.7   | 2:01  |
| Japan         | Leading Index CI                     | --       | 98.7   | 99.7   | 8:00  |
| Japan         | PPI Services YoY                     | 0.00%    | 0.70%  | -0.10% | 2:50  |
| Japan         | Coincident Index                     | --       | 89.9   | 89     | 8:00  |
| Japan         | BOJ Outright Bond Purchase 3~5 Years |          |        |        | 4:10  |
| Slovenia      | Average Real Monthly Wage YoY        | --       | --     | 10.20% | 11:30 |
| Spain         | PPI MoM                              | --       | --     | -1.50% | 10:00 |
| Spain         | PPI YoY                              | --       | --     | 0.80%  | 10:00 |
| United States | Durable Goods Orders                 | 2.50%    | --     | -1.20% | 15:30 |
| United States | Durables Ex Transportation           | 1.60%    | --     | -0.90% | 15:30 |
| United States | Dallas Fed Manf. Activity            | 30       | --     | 28.9   | 17:30 |
| United States | Cap Goods Orders Nondef Ex Air       | 1.80%    | --     | -0.90% | 15:30 |
| United States | Cap Goods Ship Nondef Ex Air         | 1.50%    | --     | -1.10% | 15:30 |

Source: Bloomberg

## Banque BEMO sal

### Head Office - Private and Corporate Banking

Elias Sarkis Ave., Bemo Bldg , Ashrafieh - Lebanon  
Tel: +961 1 200 505 Fax: +961 1 217 860

### Research & Development [research@bemobank.com](mailto:research@bemobank.com)

Elias Sarkis Ave., Bemo Bldg , Ashrafieh - Lebanon  
Tel: +961 1 200 505 Fax: +961 1 217 860

#### Disclaimer:

This report is published for information purposes only. The information herein has been compiled from, or based upon sources considered to be reliable (Bloomberg, SeekingAlpha, DailyStar...), but we do not guarantee or assume responsibility for its completeness and accuracy. This document should not be construed as a solicitation to take part in any investment, or as constituting any representation or warranty on our part. This report is not to be relied upon in substitution for the exercise of specialists.

We may not have taken any steps to ensure that the securities referred to in this report are suitable for any particular investor. The investments and services contained or referred to herein are not purported to be exhaustive, any person considering an investment should seek specialist advice on the suitability of an investment.

Nothing in this report constitutes investment, legal, accounting or tax advice, or a representation that any investment or strategy is suitable or appropriate to your individual circumstances, or otherwise constitutes a personal recommendation. Clients understand that it is their responsibility to seek legal and/or tax advice regarding the legal and tax consequences of their investment transactions. The consequences of any action taken on the basis of information contained herein are solely the responsibility of the recipient.

Investment instruments are subject to risk, including possible loss of principal amount invested. Past performance should not be taken as an indication or guarantee of future performance, and no representation or warranty, express or implied, is made regarding future performance. The value of securities and financial instruments is subject to exchange rate fluctuation that may have a positive or adverse effect on the price or income of such securities or financial instruments. Some investments mentioned in this report may have a high level of volatility. High volatility investments may experience sudden and large falls in their value causing losses when that investment is realized. Some investments may not be readily realizable and it may be difficult to sell or realize those investments, similarly it may prove difficult to obtain reliable information about the value, or risks, to which such an investment is exposed.

This report may provide the addresses of websites or references. We have not reviewed any such site and takes no responsibility for the content contained therein. Such address or reference is provided solely for convenience and information. Accessing such website through this report shall be at the recipients own risk.