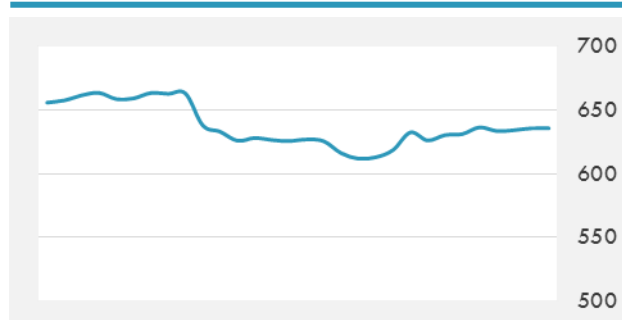
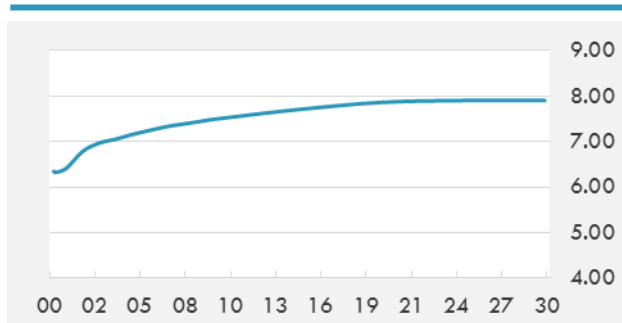


**BEIRUT STOCK EXCHANGE**

	Last	Daily %	YTD %	Dividend %
MSCI Lebanon	635.79	0.23%	-10.91%	
<b>Development and Reconstruction</b>				
Solidere A	8.01	0.12%	-22.83%	
Solidere B	7.99	1.78%	-23.90%	
<b>Banking</b>				
Audi Listed	5.6	0.00%	-17.65%	8.90%
BLC Listed	0.93	0.00%	-6.06%	
BOB Listed	18.8	0.00%	0.00%	3.52%
Byblos Listed	1.55	-1.27%	-8.82%	8.53%
BEMO Listed	1.3	0.00%	-23.53%	4.07%
BLOM Listed	11.07	0.09%	4.43%	8.95%
<b>Trading</b>				
RYMCO	3.25	0.00%	0.00%	
<b>Industrial</b>				
Holcim	14.5	0.00%	23.40%	16.46%
Ciments Blancs	2.16	0.00%	37.58%	

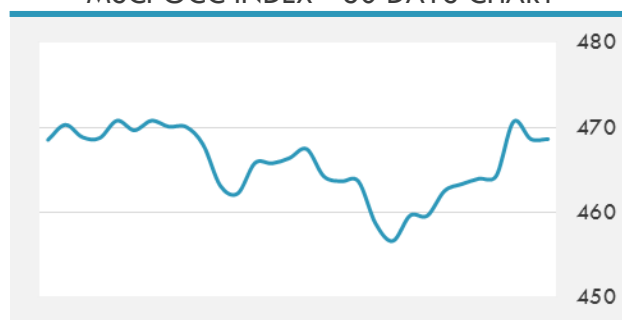
**MSCI LEBANON INDEX - 30 DAYS CHART**

**LEBANESE USD SOVEREIGN CURVE**


- A consortium of three Bahraini banks will establish a company dedicated to research & development in the sharia-compliant fintech sector as the Arabian Gulf state seeks to position itself as a leader in financial technology.
- Qatar's government will comfortably be able to raise \$9 billion through international bond issuance next year, Yousef Al Jaida, chief executive of the Qatar Financial Centre (QFC), said on Tuesday.

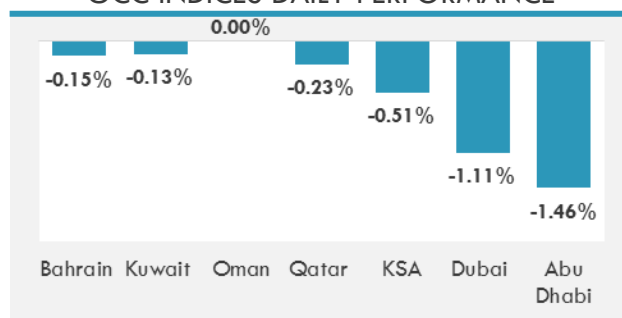
Source: Daily Star, Gulf Base

**GCC EQUITY INDICES**

	Last Price	Daily %	YTD %
Bahrain	1272.27	-0.15%	3.99%
Kuwait	6214.12	-0.13%	7.53%
Oman	5109.62	0.00%	-11.72%
Qatar	7912.48	-0.23%	-25.63%
KSA	7067.13	-0.51%	-1.99%
Dubai	3393.74	-1.11%	-3.97%
Abu Dhabi	4263.62	-1.46%	-5.98%

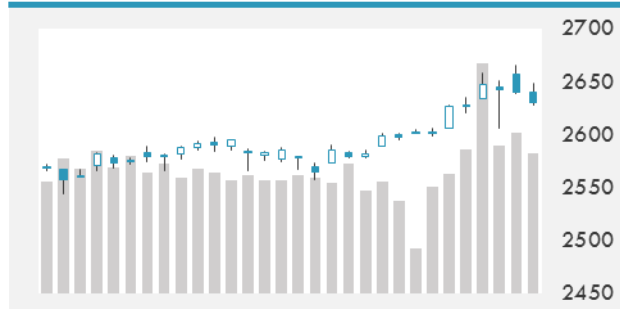
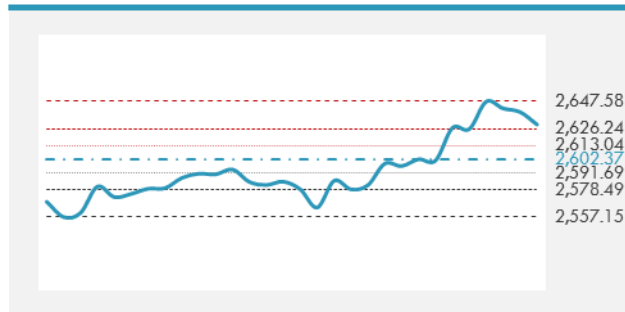
**MSCI GCC INDEX - 30 DAYS CHART**

**LOCAL/GCC FOREIGN EXCHANGE**

	Cross	Last Price
Lebanese Pound Spot	USD/LBP	1508.82
Bahraini Dinar Spot	USD/BHD	0.37726
Kuwaiti Dinar Spot	USD/KWD	0.30189
Omani Rial Spot	USD/OMR	0.38501
Qatari Riyal Spot	USD/QAR	3.7125
Saudi Riyal Spot	USD/SAR	3.7501
UAE Dirham Spot	USD/AED	3.6727

**GCC INDICES DAILY PERFORMANCE**


**UNITED STATES EQUITY MARKET INDICES**

	Last Price	Daily %	YTD %	Δ10D Vol
<b>Major Indices</b>				
Dow Jones	24180.64	-0.45%	22.36%	0.87%
S&P 500	2629.57	-0.37%	17.45%	0.22%
Nasdaq	6762.213	-0.19%	25.62%	-1.80%
<b>Sectors Indices</b>				
Discretionary	772.10	-0.60%	19.18%	1.96%
Staples	581.96	-0.15%	9.43%	0.61%
Energy	510.46	-0.53%	-7.94%	1.05%
Financials	461.01	-0.58%	19.27%	1.31%
Healthcare	948.16	-0.19%	18.98%	-0.75%
Industrials	618.99	-0.89%	15.04%	1.88%
IT	1081.2	0.21%	33.82%	-1.68%
Materials	371.04	-0.50%	18.86%	0.54%
Telecom	157.35	-1.78%	-10.91%	4.26%
Utilities	279.34	-1.24%	13.17%	3.30%
Real Estate	202.8	-0.41%	6.61%	-1.03%

**S&P 500 INDEX - 30 DAYS CHART**

**S&P 500 SUPPORT & RESISTANCE**


- Stocks are poised for the longest losing streak in two years as the technology, mining, consumer and industrial sectors led declines.
- Asian stocks declined, led by miners shares following a rout in copper prices, while Japanese indexes tracked a slide in U.S. equities overnight.
- European stocks, namely basic resources, may drop following a rout in copper prices as investors turn cautious on China's economic outlook.

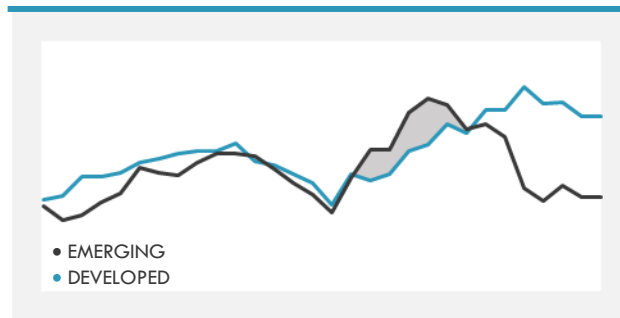
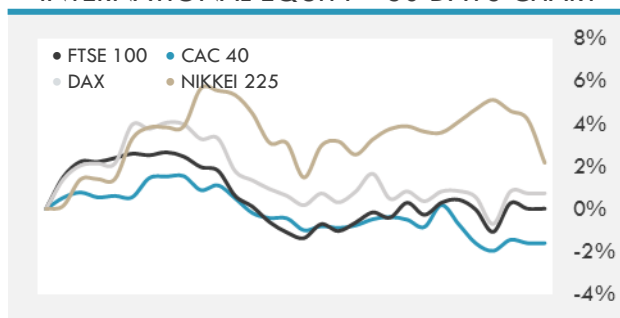
Source: Bloomberg

**INTERNATIONAL MARKETS INDICES**

	Last Price	Daily %	YTD %	Δ10D Vol
World	1227.93	-0.31%	19.10%	0.39%
Developed	2063.64	-0.31%	17.84%	0.50%
Emerging	1117.69	-0.38%	29.62%	-0.96%
Frontier	2874.22	-0.11%	18.85%	-0.65%
Europe	130.51	-0.17%	6.54%	-0.08%
Latin America	2743.19	-0.27%	17.20%	-0.20%
Asia Pacific	169.43	-0.21%	25.46%	-2.36%

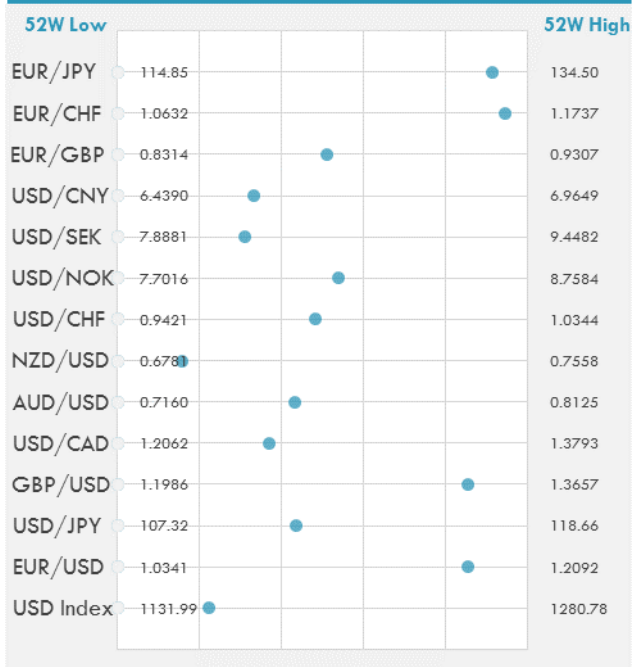
**INTERNATIONAL EQUITY INDICES**

	Last Price	Daily %	YTD %	Δ10D Vol
EuroStoxx 50	3570.57	-0.16%	8.51%	-0.27%
FTSE 100	7327.5	-0.16%	2.59%	-0.08%
CAC 40	5375.53	-0.26%	10.56%	0.01%
DAX	13048.54	-0.08%	13.65%	-1.61%
Swiss SMI	9288.92	-0.43%	13.01%	0.14%
Nikkei 225	22177.04	-1.97%	16.02%	0.01%
CSI 300	4015.82	-0.60%	21.32%	0.47%

**DEVELOPED VS EMERGING - 30 DAYS CHART**

**INTERNATIONAL EQUITY - 30 DAYS CHART**


**FOREIGN EXCHANGE MARKET**

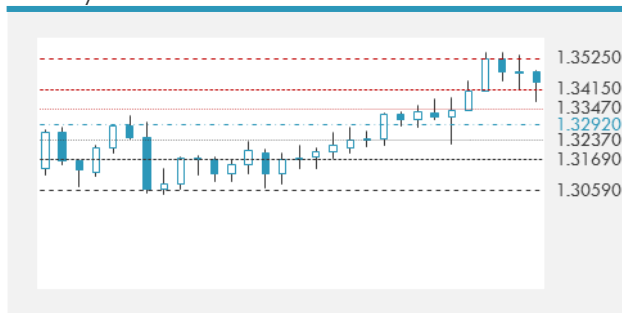
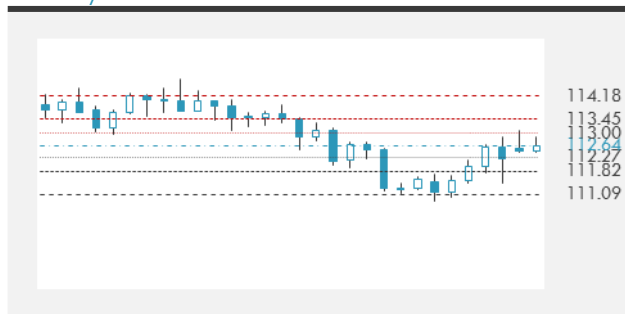
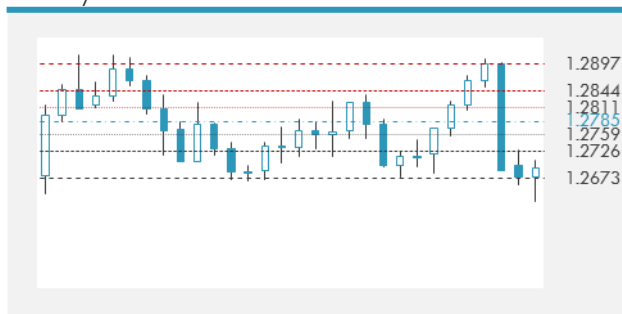
	Last Price	Daily %	Δ10D	Vol 25	ΔRR
<b>Major USD Cross Rate</b>					
USD Index	1165.11	0.01%	-0.11%	-	
EUR/USD	1.1833	0.06%	-0.15%	0.385	
USD/JPY	112.24	-0.32%	0.53%	-0.470	
GBP/USD	1.3414	-0.22%	0.12%	-0.248	
USD/CAD	1.2703	0.09%	-0.01%	0.125	
AUD/USD	0.7577	-0.39%	0.36%	-0.130	
NZD/USD	0.6903	0.39%	0.27%	-0.153	
USD/CHF	0.9866	-0.08%	0.03%	-0.370	
USD/NOK	8.2690	0.08%	-0.21%	0.123	
USD/SEK	8.3718	0.11%	-0.66%	0.543	
USD/CNY	6.6141	-0.08%	-1.14%	0.390	
<b>Major EUR Cross Rate</b>					
EUR/GBP	0.88214	0.28%	-0.22%	0.373	
EUR/CHF	1.16745	-0.01%	-0.07%	-0.185	
EUR/JPY	132.81	-0.26%	0.22%	-0.283	

**DISTANCE FROM 52 WEEKS LOW/HIGH**


- The dollar was trading near its best level of the day as short-term Treasury yields traded near their 2017 highs. The euro fell for a third straight session and dropped against all of its G-10 peers. Euro-area PMIs weighed on the currency, yet demand to fade dips remains.
- GBP/USD was trading ~1.3444 after paring most of an earlier decline vs USD as the Brexit impasse continued.
- Australia's dollar weakens after 3Q GDP data miss estimates, reducing rate hike expectations for next year.

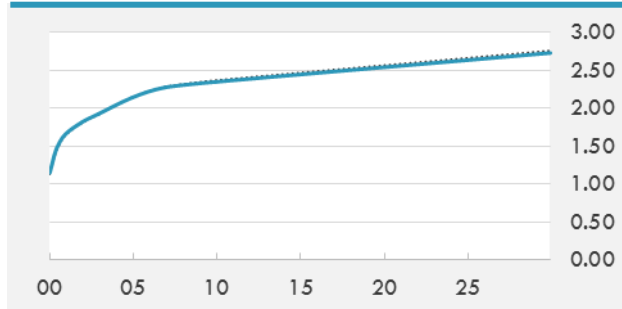
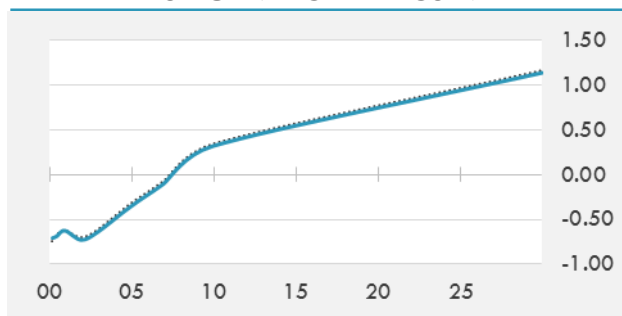
Source: Bloomberg

**EUR/USD 30 DAYS SUPPORT & RESISTANCE**

**GBP/USD 30 DAYS SUPPORT & RESISTANCE**

**USD/JPY 30 DAYS SUPPORT & RESISTANCE**

**USD/CAD 30 DAYS SUPPORT & RESISTANCE**


**GLOBAL BOND INDICES**

	Yield	ΔYield (in Bps)
<b>Benchmark Indices</b>		
US 10 Years Benchmark	2.3509	-0.021
EU 10 Years Benchmark	0.32	-0.024
UK 10 Years Benchmark	1.257	-0.030
<b>Sovereign Bonds</b>		
US Treasury Bond	2.148	-0.002
Eurozone Sovereign Bond	0.474	-0.017
Japan Sovereign Bond	-0.079	0.01
<b>Corporate Bonds</b>		
US Corporate TR	3.241	-0.015
US High Yield Bond TR	5.658	0.006
EUR Aggregate Corporate TR	0.642	-0.016
EUR High Yield TR	3.222	0.002
USD Emerging Market IG & HY	4.533	-0.019

**US TREASURIES YIELD CURVE**

**EUR GENERIC YIELD CURVE**


- Treasury yield curve flattening was relentless as the yield spread between the 5Y and 30Y plunged below 60bps for the first time since 2007; the 10Y yield was near a fresh session low of about 2.35%.
- Bund curve bull flattens supported by gains in Treasuries through Asian hours, as stocks in the region slide.
- The new 10-year benchmark Greek bond yield fell below the 5.0 pct level on its debut in the market, for the first time since October 8, 2009.

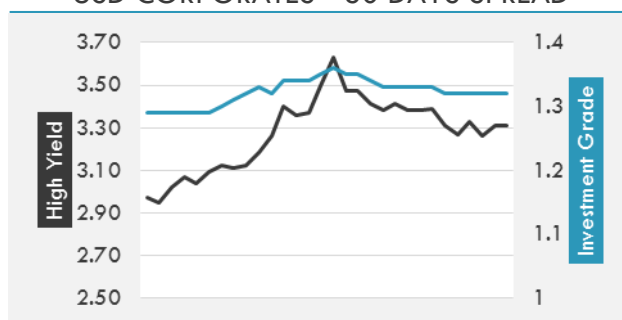
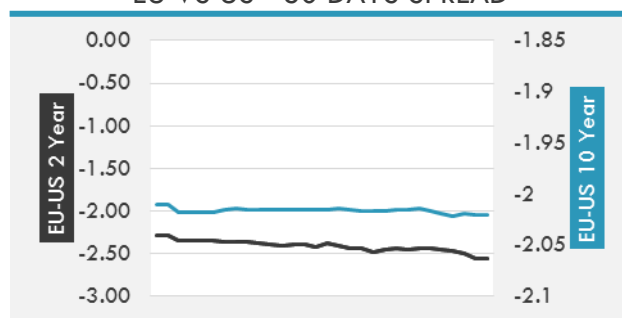
Source: Bloomberg

**OVERNIGHT RATES - SWAPS**

	Yield	ΔYield (in Bps)
3M USD LIBOR	1.50849	0.0000
3M EUR EURIBOR	-0.326	0.0000
3M GBP LIBOR	0.522	0.0000
3Y USD SWAP	2.0961	0.0021
5Y USD SWAP	2.1995	-0.0040
10Y USD SWAP	2.3673	-0.0223
30Y USD SWAP	2.5345	-0.0317

**FIXED INCOME SPREADS**

	Spread	ΔSpread (in Bps)
USD 3M vs 10Y Spread	1.04632	(0.0497)
USD 2Y vs 10Y Spread	0.52846	(0.0335)
USD IG Spread	1.32	-
USD HY Spread	3.31	0.0500
EU vs US 10Y Spread	-2.0415	(0.0056)
EU vs US 2Y Spread	-2.5567	(0.0504)
EM vs Benchmark Spread	215.3	(0.600)

**USD CORPORATES - 30 DAYS SPREAD**

**EU VS US - 30 DAYS SPREAD**


**GLOBAL COMMODITIES MARKET**

	Last Price	Daily %
Commodity Index	85.03	-0.83%

**Energy**

WTI Crude Future	57.62	0.26%
Brent Crude Future	62.86	0.66%
NYMEX Gasoline	171.84	1.55%
NYMEX Heat Oil	191.39	1.02%
ICE Gasoil	556.75	0.13%
NYMEX Natural Gas	2.914	-2.38%

**Precious Metals**

Gold Spot \$/Oz	1265.77	-0.82%
Silver Spot \$/Oz	16.104	-1.33%
Platinum Spot \$/Oz	916.15	-1.09%
Palladium Spot \$/Oz	986.36	-0.87%
Gold Future	1264.9	-1.00%
Silver Future	16.068	-1.86%
Platinum Future	917.5	-0.92%
Palladium Future	977.15	-1.47%

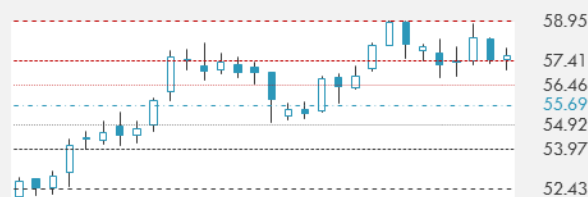
**Base Metals**

LME Aluminum	2052	-0.82%
LME Copper	6543	-4.15%
LME Zinc	3112	-2.08%
LME Nickel	10865	-4.57%
LME Lead	2500	-0.28%
LME Tin	19525	0.00%

**Agricultural**

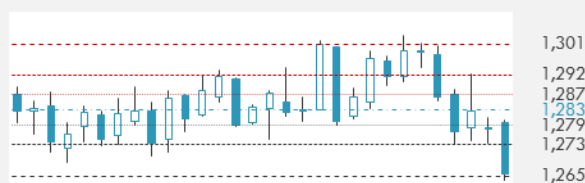
Corn CBT	353.75	0.07%
Wheat CBT	432.75	-0.57%
Soybeans CBT	1008.5	1.00%
Bean Meal CBT	343.3	1.72%
Rough Rice CBT	12.33	1.23%
MDE Palm Oil	2563	-0.97%
Soybean CBT	33.5	0.18%
Coffee ICE	127.4	-0.86%
Sugar #11 ICE	14.9	-1.06%
Cotton #2 ICE	72.51	-0.10%
Cocoa ICE	1932	-3.54%
Ethanol CME	1.358	-0.22%
Lumber CME	422.5	-2.31%
Orange Juice ICE	162.05	0.15%
Live Cattle CME	120.525	-0.54%
Feeder Cattle CME	147.825	-1.42%
Lean Hogs CME	70.5	-1.64%

**COMMODITY INDEX SUPPORT & RESISTANCE**

**WTI OIL 30 DAYS SUPPORT & RESISTANCE**


- Oil slid toward \$57 a barrel after industry data showed U.S. gasoline stockpiles expanded for the first time in four weeks.
- Copper Extends decline, giving up \$3, on China slowdown.
- Gold holds near lowest level in two months as investors weigh impact of U.S. tax bill.

Source: Bloomberg

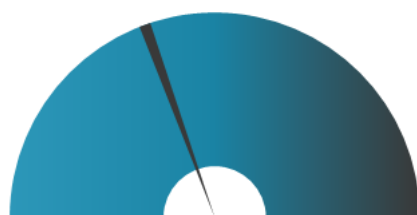
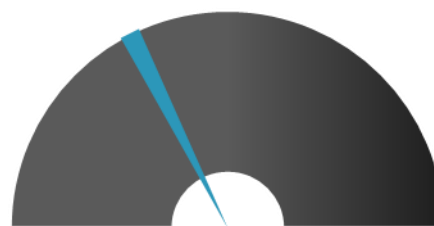
**GOLD 30 DAYS SUPPORT & RESISTANCE**

**SILVER 30 DAYS SUPPORT & RESISTANCE**


**TOP 10 WINNERS**

	Ticker	Last Price	Daily %
<b>S&amp;P 500 Stocks</b>			
EDISON INTERNATIONAL	EIX	70	-12.78
ROBERT HALF INTL INC	RHI	53.29	-5.95
MATTEL INC	MAT	15.95	-5.34
FOOT LOCKER INC	FL	43.4	-5.16
DISCOVERY COMM	DISCK	18.57	-4.87
DISCOVERY COMM	DISCA	19.86	-4.75
CARMAX INC	KMX	67.72	-4.23
RALPH LAUREN CORP	RL	95.79	-3.93
KOHL'S CORP	KSS	48.26	-2.70
SEMPRA ENERGY	SRE	116.22	-3.54

**TOP 10 LOSERS**

	Ticker	Last Price	Daily %
<b>S&amp;P 500 Stocks</b>			
MICRON TECHNOLOGY	MU	41.21	3.28
EBAY INC	EBAY	36.81	3.11
VALERO ENERGY CORP	VLO	85.78	2.57
ELECTRONIC ARTS INC	EA	103.38	2.53
DIGITAL REALTY TRUST	DLR	113.02	2.20
WELLS FARGO & CO	WFC	58.55	2.02
MARATHON PETROLEUM	MPC	64.54	1.96
WESTERN DIGITAL CORP	WDC	78.56	1.88
KLA-TENCOR CORP	KLAC	102.64	1.74
MICHAEL KORS	KORS	59.81	1.73

**S&P 500 DISTRIBUTION**

**WINNERS**
**LOSERS**
**S&P VOLATILITY INDEX**

**LOW VOLATILITY**
**HIGH VOLATILITY**

- Part of a broader realignment of its supply chain in North America, Toyota has confirmed it will decide on a location for its joint U.S. factory with Mazda in the first quarter of 2018.
- Plagued by weak vehicle sales in the region, Ford is launching 50 new vehicles in China by 2025, including 15 electrified vehicles, said Peter Fleet, Ford's head of Asia Pacific.
- EU finance ministers will discuss U.S. legislation to slash taxes at a meeting in Brussels today and whether some parts of the reform will violate rules of the World Trade Organization.
- Statoil submits its plan for development and operation for the ~NOK49B (\$5.9B) Johan Castberg project in the Barents Sea, which contains as much as 650M boe in recoverable resources.
- Barclays upgrades Snap (SNAP) from Equal Weight to Overweight and raises its price target from \$11 to \$18.
- Jefferies upgrades McDonald's (MCD) to a Buy rating on confidence that the restaurant operator is well-positioned with its new digital and delivery programs.
- Apple's (AAPL) iPhone market share declined in the three months leading up to the iPhone X release, according to Kantar data.
- Pizza Hut is testing beer delivery in Phoenix as a first step in would could become a major push into alcohol. Six-packs of Anheuser-Busch InBev (BUD) brands will cost \$10.99.
- Raymond James sees more upside for Costco (COST) even after shares ran up 8% following the retailer's blockbuster report last week on November sales.

**KEY ECONOMIC INDICATORS**

Country	Event	Surv(M)	Actual	Prior	Time
Canada	Bank of Canada Rate Decision	1.00%	--	1.00%	17:00
United States	DOE U.S. Crude Oil Inventories	-2500k	--	-3429k	17:30
United States	MBA Mortgage Applications	--	--	-3.10%	14:00
Germany	Factory Orders MoM	-0.20%	0.50%	1.00%	9:00
United States	ADP Employment Change	190k	--	235k	15:15
Germany	Factory Orders WDA YoY	7.00%	6.90%	9.50%	9:00
Canada	Statcan Durum Production	4500k	--	3898k	15:30
Germany	Markit Germany Construction PMI	--	--	53.3	10:30
Germany	Markit Germany Retail PMI	--	--	51.2	11:10
Eurozone	Markit Eurozone Retail PMI	--	--	51.1	11:10
France	Markit France Retail PMI	--	--	51.5	11:10
Italy	Markit Italy Retail PMI	--	--	50.3	11:10
Canada	Statcan Wheat Production	27400k	--	25541k	15:30
Canada	Statcan Canola Production	19900k	--	18203k	15:30
Canada	Statcan Barley Production	7466k	--	7212k	15:30
Japan	BOJ Outright Bond Purchase 5~10 Years				3:10
Japan	BOJ Masai makes a speech				3:30
United Kingdom	UK Brexit Secretary Davis Addresses Brexit Parliamentary...				11:15
Eurozone	ECB Executive Board member Yves Mersch speaks in Frankfurt				12:30
Germany	ECB's Mersch Speaks in Frankfurt				12:30
United Kingdom	Prime Minister's Question Time in House of Commons				14:00

Source: Bloomberg

**Banque BEMO sal**
**Head Office - Private and Corporate Banking**

 96 Pasteur Building, Pasteur Street, Medawar Area, P.O. Box: 16-6353, Beirut - Lebanon  
 Tel: + 961 1 568 250 Fax: + 961 1 568 266

**Wealth & Investment Management** [research@bemobank.com](mailto:research@bemobank.com)

 Beirut Central District Riad El Solh Square, Esseily Building Bloc A, 7th Floor Beirut - Lebanon  
 Tel: + 961 1 992 600 Fax: + 961 1 983 368  
[www.bemobank.com](http://www.bemobank.com)
**Disclaimer:**

This report is published for information purposes only. The information herein has been compiled from, or based upon sources considered to be reliable (Bloomberg, SeekingAlpha, DailyStar...), but we do not guarantee or assume responsibility for its completeness and accuracy. This document should not be construed as a solicitation to take part in any investment, or as constituting any representation or warranty on our part. This report is not to be relied upon in substitution for the exercise of specialists.

We may not have taken any steps to ensure that the securities referred to in this report are suitable for any particular investor. The investments and services contained or referred to herein are not purported to be exhaustive, any person considering an investment should seek specialist advice on the suitability of an investment.

Nothing in this report constitutes investment, legal, accounting or tax advice, or a representation that any investment or strategy is suitable or appropriate to your individual circumstances, or otherwise constitutes a personal recommendation. Clients understand that it is their responsibility to seek legal and/or tax advice regarding the legal and tax consequences of their investment transactions. The consequences of any action taken on the basis of information contained herein are solely the responsibility of the recipient.

Investment instruments are subject to risk, including possible loss of principal amount invested. Past performance should not be taken as an indication or guarantee of future performance, and no representation or warranty, express or implied, is made regarding future performance. The value of securities and financial instruments is subject to exchange rate fluctuation that may have a positive or adverse effect on the price or income of such securities or financial instruments. Some investments mentioned in this report may have a high level of volatility. High volatility investments may experience sudden and large falls in their value causing losses when that investment is realized. Some investments may not be readily realizable and it may be difficult to sell or realize those investments, similarly it may prove difficult to obtain reliable information about the value, or risks, to which such an investment is exposed.

This report may provide the addresses of websites or references. We have not reviewed any such site and takes no responsibility for the content contained therein. Such address or reference is provided solely for convenience and information. Accessing such website through this report shall be at the recipients own risk.