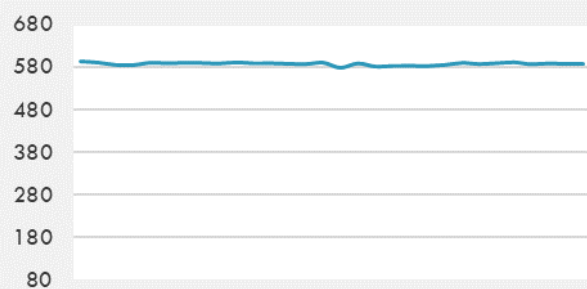
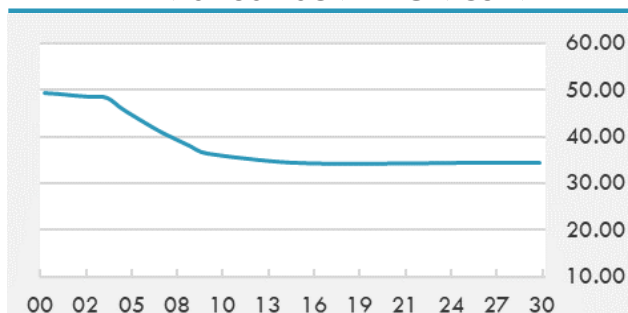


BEIRUT STOCK EXCHANGE

	Last	Daily %	YTD %	Dividend %
MSCI Lebanon	588.37	-0.22%	34.41%	
Development and Reconstruction				
Solidere A	24.83	-0.16%	34.22%	
Solidere B	24.69	-0.40%	34.99%	
Banking				
Audi Listed	2.19	0.00%	79.51%	
BLC Listed	0.93	0.00%	0.00%	
BOB Listed	17.8	0.00%	0.00%	
Byblos Listed	0.93	0.00%	75.47%	
BEMO Listed	1.2	0.00%	0.00%	
BLOM Listed	3.38	0.00%	63.29%	
Trading				
RYMCO	3.19	0.00%	0.00%	
Industrial				
Holcim	17	0.00%	17.24%	
Ciments Blancs	4.5	0.00%	9.76%	

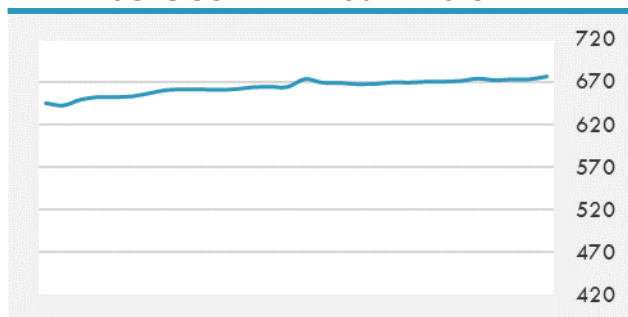
MSCI LEBANON INDEX - 30 DAYS CHART

LEBANESE USD SOVEREIGN CURVE


- Lebanon's electricity reform should be a top priority for the government to prove it is capable of resolving decades of state mismanagement, the regional director of the World Bank said. Saroj Kumar Jha said Lebanon's current fiscal problems and piles of national debt relate to the mismanagement of the electricity sector. "You see that Lebanon's fiscal problem today is because of the electricity sector. A large part of your debt is coming from the electricity sector, if you continue to subsidize BDL [Bank du Liban] with \$2 billion or an average every year – money that you don't have - this is where the real issue is", Kumar Jha said.

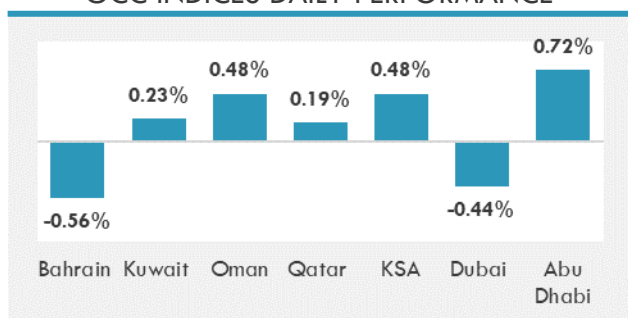
Source: Daily Star, Gulf Business, Mubasher, Bloomberg, Businessnews LB

GCC EQUITY INDICES

	Last Price	Daily %	YTD %
Bahrain	1587.91	-0.56%	5.99%
Kuwait	6388.03	0.23%	15.44%
Oman	4098.47	0.48%	12.02%
Qatar	10828.08	0.19%	3.76%
KSA	11031.73	0.48%	26.95%
Dubai	2804.11	-0.44%	12.53%
Abu Dhabi	6948.63	0.72%	37.72%

MSCI GCC INDEX - 30 DAYS CHART

LOCAL/GCC FOREIGN EXCHANGE

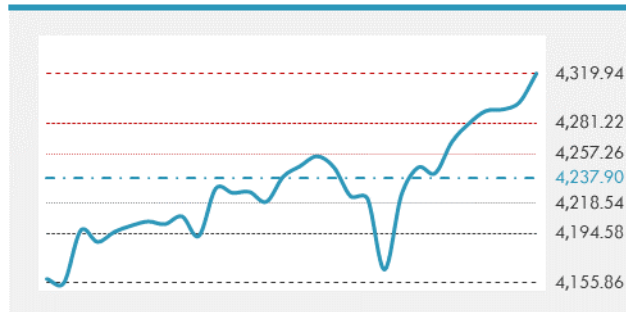
	Cross	Last Price
Lebanese Pound Spot	USD/LBP	1515.5
Bahraini Dinar Spot	USD/BHD	0.37701
Kuwaiti Dinar Spot	USD/KWD	0.3012
Omani Rial Spot	USD/OMR	0.385
Qatari Riyal Spot	USD/QAR	3.6412
Saudi Riyal Spot	USD/SAR	3.7505
UAE Dirham Spot	USD/AED	3.673

GCC INDICES DAILY PERFORMANCE


UNITED STATES EQUITY MARKET INDICES

	Last Price	Daily %	YTD %	Δ10D Vol
Major Indices				
Dow Jones	34786.35	0.44%	13.16%	-4.62%
S&P 500	4352.34	0.75%	15.01%	-4.49%
Nasdaq	14639.33	0.81%	12.68%	-2.99%
Sectors Indices				
Discretionary	1453.51	1.08%	10.40%	-1.82%
Staples	721.8	0.31%	3.34%	-4.34%
Energy	413.52	-0.20%	44.81%	-4.37%
Financials	614.07	-0.20%	25.47%	-7.11%
Healthcare	1495.32	0.86%	11.97%	-2.70%
Industrials	873.16	0.18%	16.28%	-2.64%
IT	2633.26	1.39%	13.35%	-2.83%
Materials	520.31	0.08%	14.08%	-3.80%
Com. Services	269.14	0.92%	20.17%	-2.46%
Utilities	325.48	0.08%	1.93%	-3.97%
Real Estate	279.72	0.52%	22.11%	-2.43%

S&P 500 INDEX - 30 DAYS CHART

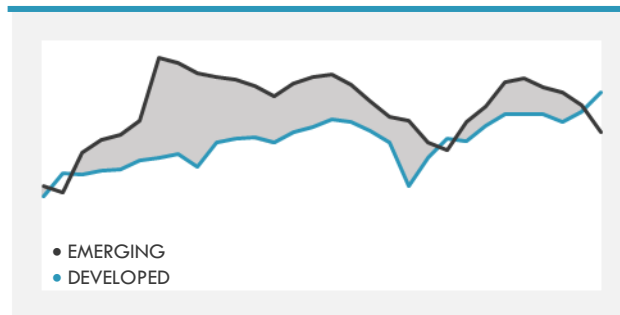
S&P 500 SUPPORT & RESISTANCE


- Stocks climbed on speculation the economy is recovering at a pace that won't make the Federal Reserve imminently take away the liquidity punch bowl that has helped push the market to a record. The S&P 500 closed at an all-time high for a seventh straight day. That was after data showed U.S. job growth surged the most in 10 months, while the unemployment rate edged up to 5.9%.
- European equities gained slightly on Friday as investors weighed stronger-than-forecast U.S. jobs growth against concerns about the impact of the fast-spreading delta virus strain.

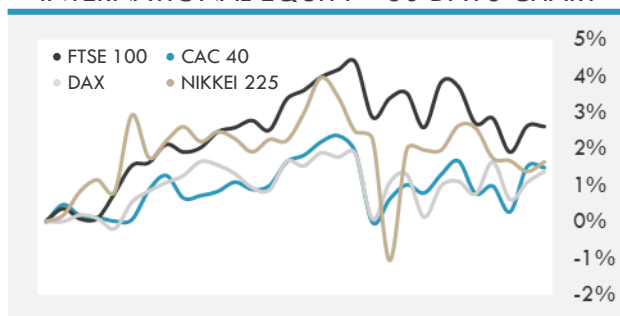
Source: Bloomberg, Financial Times, Reuters

INTERNATIONAL MARKETS INDICES

	Last Price	Daily %	YTD %	Δ10D Vol
World	1770.04	0.39%	11.69%	-4.40%
Developed	3046.09	0.59%	12.57%	-4.73%
Emerging	1355.38	-0.94%	5.96%	0.43%
Frontier	2593.87	0.37%	-0.29%	-0.87%
Europe	151.29	0.22%	14.28%	-2.96%
Latin America	2617.73	0.68%	6.04%	0.59%
Asia Pacific	206.05	-0.32%	3.40%	0.32%

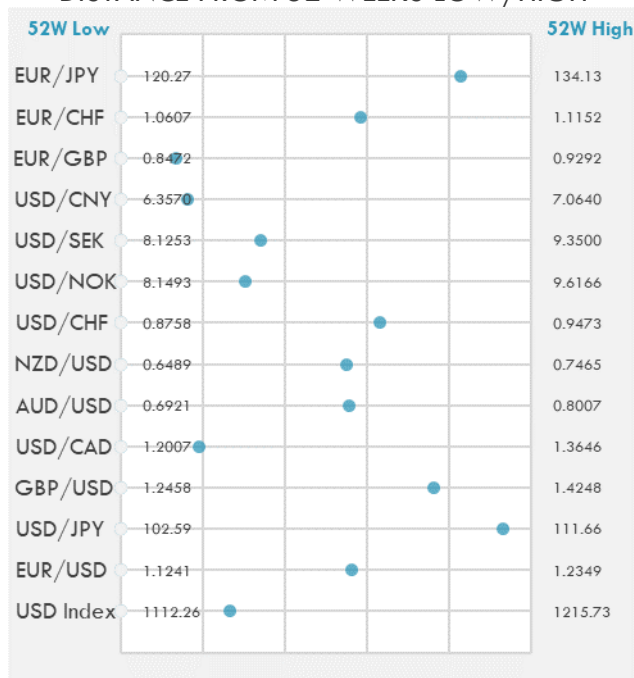
DEVELOPED VS EMERGING - 30 DAYS CHART

INTERNATIONAL EQUITY INDICES

	Last Price	Daily %	YTD %	Δ10D Vol
EuroStoxx 50	4084.31	0.13%	14.81%	-2.91%
FTSE 100	7123.27	-0.03%	10.29%	-2.80%
CAC 40	6552.86	-0.01%	18.06%	-1.24%
DAX	15650.09	0.30%	13.74%	-3.27%
Swiss SMI	11964.84	-0.10%	11.90%	-0.46%
Nikkei 225	28783.28	0.27%	4.88%	0.02%
CSI 300	5081.12	-2.84%	-2.50%	-0.05%

INTERNATIONAL EQUITY - 30 DAYS CHART


FOREIGN EXCHANGE MARKET

	Last Price	Daily %	Δ10D	Vol 25	ΔRR
Major USD Cross Rate					
USD Index	1139.85	-0.48%	-0.06%	-	
EUR/USD	1.1865	0.13%	-0.38%	-0.223	
USD/JPY	111.05	-0.43%	-0.26%	0.005	
GBP/USD	1.3824	0.41%	-0.13%	-0.383	
USD/CAD	1.2322	-0.92%	-0.40%	0.420	
AUD/USD	0.7526	0.75%	-0.15%	-0.675	
NZD/USD	0.7026	0.75%	-0.52%	-0.610	
USD/CHF	0.9209	-0.50%	0.03%	0.388	
USD/NOK	8.5957	-0.35%	-0.66%	1.065	
USD/SEK	8.5433	-0.38%	-1.54%	0.370	
USD/CNY	6.4730	0.06%	-0.24%	0.255	
Major EUR Cross Rate					
EUR/GBP	0.85831	-0.29%	0.01%	0.088	
EUR/CHF	1.09255	-0.39%	-0.27%	0.273	
EUR/JPY	131.75	-0.31%	-1.07%	-0.363	

DISTANCE FROM 52 WEEKS LOW/HIGH


- The dollar rose against most of its Group-of-10 peers as simmering trade relations between China and the European Union boosted haven bids ahead of a video call between the countries' top leaders.
- The yuan edged higher, with the central bank expected to limit the currency's gains after a report showed a gauge of China's services industry slowed sharply in June.
- AUD/USD edges down 0.1% after closing 0.8% higher to snap a four-day slide and halve the week's losses.

Source: Bloomberg, Financial Times, Reuters

EUR/USD 30 DAYS SUPPORT & RESISTANCE

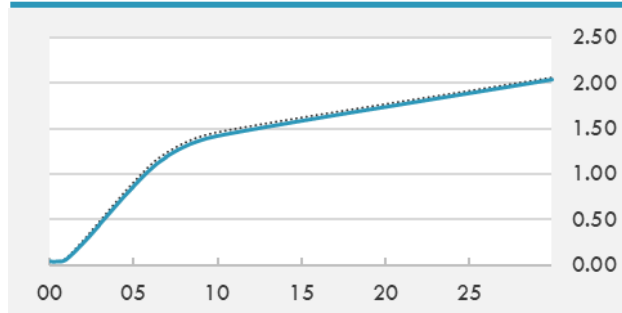
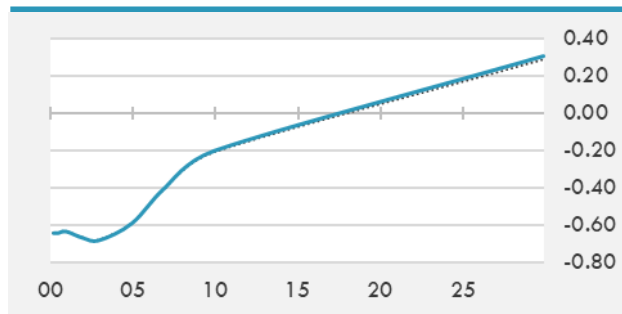
GBP/USD 30 DAYS SUPPORT & RESISTANCE

USD/JPY 30 DAYS SUPPORT & RESISTANCE

USD/CAD 30 DAYS SUPPORT & RESISTANCE


GLOBAL BOND INDICES

	Yield	ΔYield (in Bps)
Benchmark Indices		
US 10 Years Benchmark	1.4238	-0.034
EU 10 Years Benchmark	-0.235	-0.034
UK 10 Years Benchmark	0.73	0.014
Sovereign Bonds		
US Treasury Bond	0.594	0
Eurozone Sovereign Bond	-0.428	0
Japan Sovereign Bond	-0.104	0
Corporate Bonds		
US Corporate TR	2.038	-0.026
US High Yield Bond TR	3.690	-0.028
EUR Aggregate Corporate TR	0.318	-0.018
EUR High Yield TR	2.982	0.005
USD Emerging Market IG & HY	3.816	-0.008

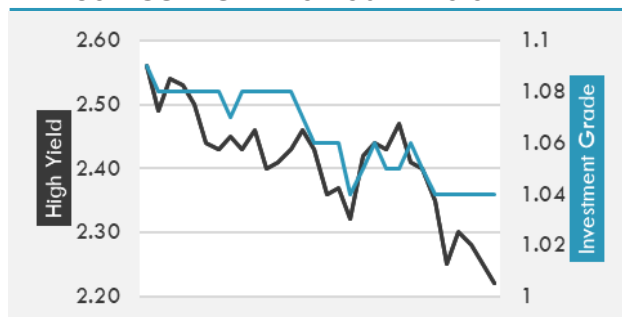
US TREASURIES YIELD CURVE

EUR GENERIC YIELD CURVE


- Treasury futures little changed from the open with cash closed for U.S. holiday and another week of no bond supply ahead.
- Aussie 10-year yields open 5bps lower in a catch-up move with Aussie building approvals and retail sales data due Monday, though impact may be muted ahead of key RBA decision Tuesday. JGB curve may see some concession before 30-year sale.
- Bunds and Italian bonds bull flatten, shrugging off stronger-than-forecast U.S. jobless numbers as summer carry trades dominate.

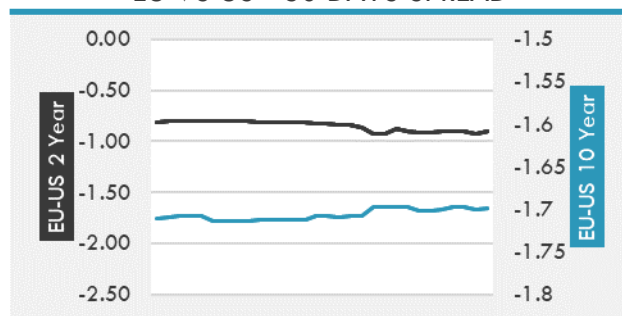
Source: Bloomberg, Financial Times, Economic times, Reuters

OVERNIGHT RATES - SWAPS

	Yield	ΔYield (in Bps)
3M USD LIBOR	0.138	-0.007
3M EUR EURIBOR	-0.546	-0.006
3M GBP LIBOR	0.079	0.003
3Y USD SWAP	0.556	-0.034
5Y USD SWAP	0.975	-0.001
10Y USD SWAP	1.405	-0.037
30Y USD SWAP	1.732	-0.024

USD CORPORATES - 30 DAYS SPREAD

FIXED INCOME SPREADS

	Spread	ΔSpread (in Bps)
USD 3M vs 10Y Spread	1.373	-0.034
USD 2Y vs 10Y Spread	1.188	-0.013
USD IG Spread	1.040	0.000
USD HY Spread	2.220	-0.030
EU vs US 10Y Spread	-1.659	0.006
EU vs US 2Y Spread	-0.905	0.017
EM vs Benchmark Spread	257.900	2.100

EU VS US - 30 DAYS SPREAD


GLOBAL COMMODITIES MARKET

	Last Price	Daily %
Commodity Index	94.98	0.30%

Energy

WTI Crude Future	75.16	-0.09%
Brent Crude Future	76.17	0.44%
NYMEX Gasoline	229.98	1.42%
NYMEX Heat Oil	217.91	1.06%
ICE Gasoil	611.25	0.87%
NYMEX Natural Gas	3.7	1.07%

Precious Metals

Gold Spot \$/Oz	1787.3	0.59%
Silver Spot \$/Oz	26.4715	1.68%
Platinum Spot \$/Oz	1093.74	0.65%
Palladium Spot \$/Oz	2790.29	0.84%
Gold Future	1783.3	0.37%
Silver Future	26.501	1.54%
Platinum Future	1087.7	0.63%
Palladium Future	2792.5	0.85%

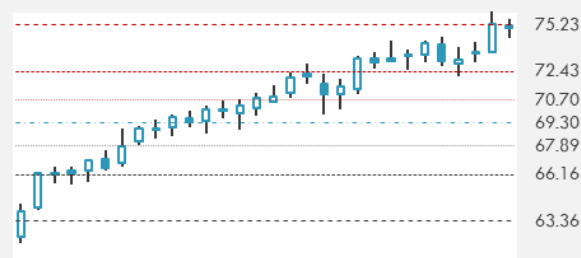
Base Metals

LME Aluminum	2562	1.99%
LME Copper	9377	0.58%
LME Zinc	2935	-0.12%
LME Nickel	18342	1.31%
LME Lead	2300	1.37%
LME Tin	31520	0.72%

Agricultural

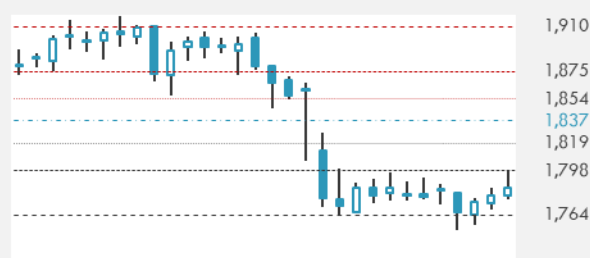
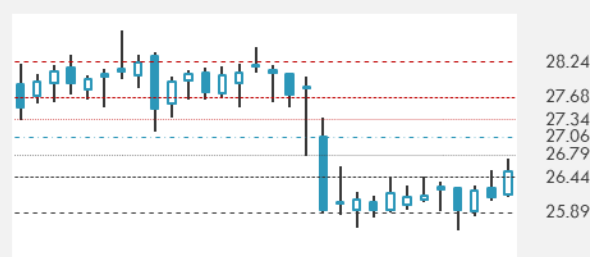
Corn CBT	579.75	-1.57%
Wheat CBT	652.75	-1.92%
Soybeans CBT	1399	0.25%
Bean Meal CBT	388.3	-0.10%
Rough Rice CBT	13.145	-2.38%
MDE Palm Oil	3789	2.13%
Soybean CBT	62.28	1.28%
Coffee ICE	153.05	-2.14%
Sugar #11 ICE	18.15	1.17%
Cotton #2 ICE	86.97	1.25%
Cocoa ICE	2319	-1.49%
Ethanol CME	2.38	0.00%
Lumber CME	787.3	3.01%
Orange Juice ICE	127.05	-0.08%
Live Cattle CME	122	-1.27%
Feeder Cattle CME	157.05	0.46%
Lean Hogs CME	100.225	-0.07%

COMMODITY INDEX SUPPORT & RESISTANCE

WTI OIL 30 DAYS SUPPORT & RESISTANCE


- Brent oil was steady near \$76 a barrel ahead of another round of critical OPEC+ discussions to break a stalemate over raising production, with tension rising over the weekend between two long-time allies.
- Gold held steady near a two-week high as concerns eased over an earlier-than-expected rate hike by the Federal Reserve.

Source: Bloomberg, Reuters

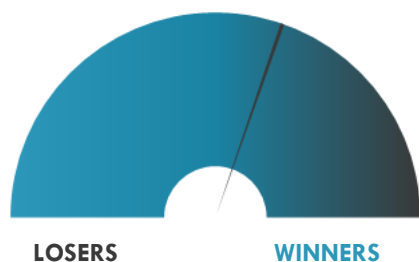
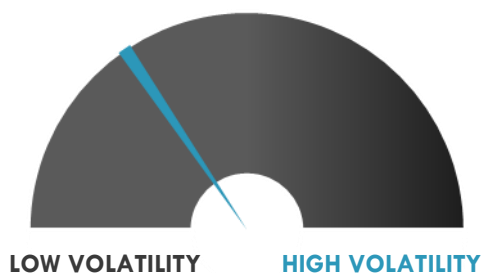
GOLD 30 DAYS SUPPORT & RESISTANCE

SILVER 30 DAYS SUPPORT & RESISTANCE


TOP 10 WINNERS

	Ticker	Last Price	Daily %
S&P 500 Stocks			
Oracle Corp	ORCL	81.82	+2.87%
Paycom Software Inc	PAYC	383.86	+2.75%
Hilton Worldwide Hold.	HLT	126.81	+2.58%
CarMax Inc	KMX	133.82	+2.48%
Fortinet Inc	FTNT	248.04	+2.35%
Alphabet Inc	GOOGL	2505.15	+2.30%
Amazon.com Inc	AMZN	3510.98	+2.27%
Microsoft Corp	MSFT	277.65	+2.23%
NRG Energy Inc	NRG	41.41	+2.20%
Gartner Inc	IT	253.69	+2.12%

TOP 10 LOSERS

	Ticker	Last Price	Daily %
S&P 500 Stocks			
Intern.Business Machine	IBM	140.02	-4.64%
Devon Energy Corp	DVN	29.23	-2.44%
Marathon Oil Corp	MR	13.85	-2.26%
Penn National Gaming	PENN	74.71	-2.19%
APA Corp	APA	21.47	-2.05%
Invesco Ltd	IVZ	26.43	-1.93%
ViacomCBS Inc	VIAC	44.16	-1.76%
Everest Re Group Ltd	RE	252.35	-1.74%
Norwegian Cruise Line	NCLH	29	-1.73%
Vulcan Materials Co	VMC	170.98	-1.64%

S&P 500 DISTRIBUTION

S&P VOLATILITY INDEX


- Ocugen +13.3% post-market after Indian co-development partner Bharat Biotech shared "positive results" of its Phase 3 study of Covaxin, a whole virion inactivated COVID-19 vaccine candidate.
- Odonate Therapeutics has added ~14.7% in the post-market after the company submitted a regulatory filing to indicate that Ikarion Capital has raised its stake to more than 5%.
- Facebook (+0.1%) is testing a "threading" feature for its news feed posts, similar to the threading found on Twitter (+1.6%).
- Shares of Cerevel Therapeutics (-13.1%) went sharply down in afternoon trading after the company priced a \$350M equity offering of 14M shares at \$25 per share.
- Torrid Holdings was up another 12.15% and traded as high as \$27.66 as demand for shares of the plus-sized retailer stayed strong on the day after its debut. Torrid traded at a higher market cap than mall peers like American Eagle Outfitters, Urban Outfitters, Abercrombie & Fitch, Guess, and Buckle.
- POSTD Merchant Banque (+149.9%) has acquired controlling interest in Banco PyME de la Comunidad SA. Pursuant to the transaction, PMBY will integrate with Banco PyME as a fully licensed bank to commence comprehensive international banking operations.
- Shares of KalVista Pharmaceuticals (-3.8%) went down as the shares have shed more than 12% last week.

KEY ECONOMIC INDICATORS

Country	Event	Surv (M)	Actual	Prior	Time
Australia	Building Approvals MoM	-5.00%	-7.10%	-8.60%	4:30
Australia	Retail Sales MoM	0.10%	0.40%	0.10%	4:30
Australia	Melbourne Institute Inflation MoM	--	0.40%	-0.20%	4:00
China	Caixin China PMI Services	54.9	50.3	55.1	4:45
China	Caixin China PMI Composite	--	50.6	53.8	4:45
Eurozone	Markit Eurozone Composite PMI	59.2	--	59.2	11:00
Eurozone	Markit Eurozone Services PMI	58	--	58	11:00
France	Markit France Services PMI	57.4	--	57.4	10:50
France	Markit France Composite PMI	57.1	--	57.1	10:50
Germany	Markit Germany Services PMI	58.1	--	58.1	10:55
Germany	Markit/BME Germany Composite PMI	60.4	--	60.4	10:55
Ireland	AIB Ireland PMI Services	--	63.1	62.1	3:01
Ireland	AIB Ireland PMI Composite	--	63.4	63.5	3:01
Italy	Markit Italy Services PMI	56.2	--	53.1	10:45
Italy	Markit Italy Composite PMI	58	--	55.7	10:45
Japan	Jibun Bank Japan PMI Services	--	48	47.2	3:30
Japan	Jibun Bank Japan PMI Composite	--	48.9	47.8	3:30
Spain	Markit Spain Services PMI	60.6	--	59.4	10:15
Spain	Markit Spain Composite PMI	60.5	--	59.2	10:15
United Kingdom	Markit/CIPS UK Services PMI	61.7	--	61.7	11:30

Source: Bloomberg

Banque BEMO sal

Head Office - Private and Corporate Banking

Elias Sarkis Ave., Bemo Bldg , Ashrafieh - Lebanon
Tel: +961 1 200 505 Fax: +961 1 217 860

Research & Development research@bemobank.com

Elias Sarkis Ave., Bemo Bldg , Ashrafieh - Lebanon
Tel: +961 1 200 505 Fax: +961 1 217 860

Disclaimer:

This report is published for information purposes only. The information herein has been compiled from, or based upon sources considered to be reliable (Bloomberg, SeekingAlpha, DailyStar...), but we do not guarantee or assume responsibility for its completeness and accuracy. This document should not be construed as a solicitation to take part in any investment, or as constituting any representation or warranty on our part. This report is not to be relied upon in substitution for the exercise of specialists.

We may not have taken any steps to ensure that the securities referred to in this report are suitable for any particular investor. The investments and services contained or referred to herein are not purported to be exhaustive, any person considering an investment should seek specialist advice on the suitability of an investment.

Nothing in this report constitutes investment, legal, accounting or tax advice, or a representation that any investment or strategy is suitable or appropriate to your individual circumstances, or otherwise constitutes a personal recommendation. Clients understand that it is their responsibility to seek legal and/or tax advice regarding the legal and tax consequences of their investment transactions. The consequences of any action taken on the basis of information contained herein are solely the responsibility of the recipient.

Investment instruments are subject to risk, including possible loss of principal amount invested. Past performance should not be taken as an indication or guarantee of future performance, and no representation or warranty, express or implied, is made regarding future performance. The value of securities and financial instruments is subject to exchange rate fluctuation that may have a positive or adverse effect on the price or income of such securities or financial instruments. Some investments mentioned in this report may have a high level of volatility. High volatility investments may experience sudden and large falls in their value causing losses when that investment is realized. Some investments may not be readily realizable and it may be difficult to sell or realize those investments, similarly it may prove difficult to obtain reliable information about the value, or risks, to which such an investment is exposed.

This report may provide the addresses of websites or references. We have not reviewed any such site and takes no responsibility for the content contained therein. Such address or reference is provided solely for convenience and information. Accessing such website through this report shall be at the recipients own risk.