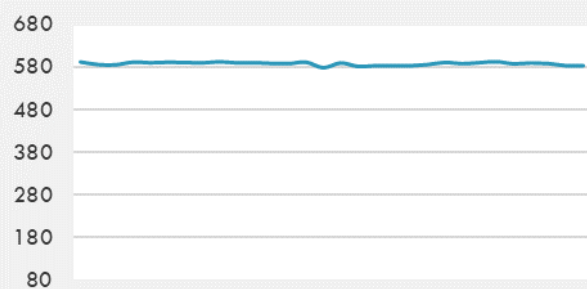
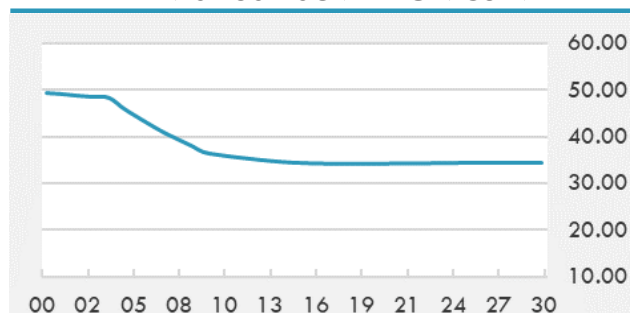


BEIRUT STOCK EXCHANGE

	Last	Daily %	YTD %	Dividend %
MSCI Lebanon	583.79	-0.78%	33.36%	
Development and Reconstruction				
Solidere A	24.6	-0.93%	32.97%	
Solidere B	24.61	-0.32%	34.55%	
Banking				
Audi Listed	2.19	0.00%	79.51%	
BLC Listed	0.93	0.00%	0.00%	
BOB Listed	17.8	0.00%	0.00%	
Byblos Listed	0.93	0.00%	75.47%	
BEMO Listed	1.2	0.00%	0.00%	
BLOM Listed	3.38	0.00%	63.29%	
Trading				
RYMCO	3.19	0.00%	0.00%	
Industrial				
Holcim	17	0.00%	17.24%	
Ciments Blancs	4.5	0.00%	9.76%	

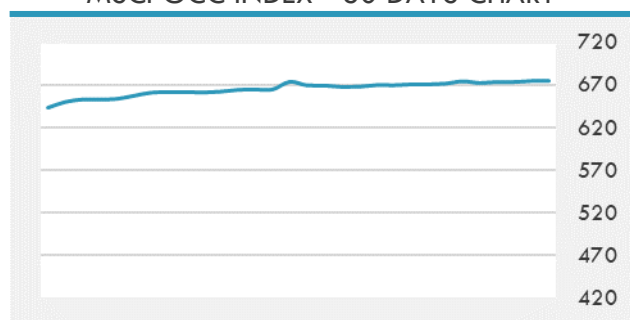
MSCI LEBANON INDEX - 30 DAYS CHART

LEBANESE USD SOVEREIGN CURVE


- The Tadawul All Share Index of the Saudi Exchange closed Monday at 11,001.03 points after falling by 0.28% or 30.70 points.
- The UAE's non-oil private sector continued to improve for the seventh consecutive month in June, but at a slightly slower pace than in May, a report showed on Monday.
- The National Bank of Ras Al Khaimah signed a memorandum of understanding with Ajman Free Zone to form a strategic alliance to support small and medium-sized enterprises and help to develop a sustainable economy.

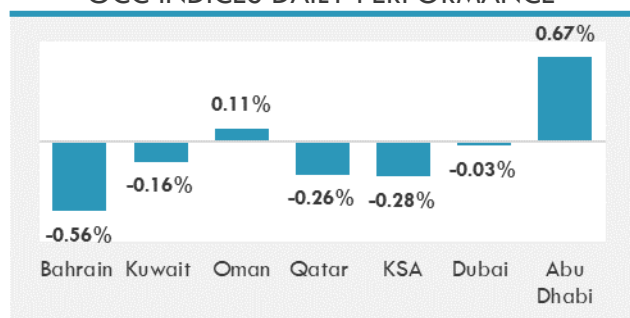
Source: Daily Star, Gulf Business, Mubasher, Bloomberg, Businessnews LB

GCC EQUITY INDICES

	Last Price	Daily %	YTD %
Bahrain	1579.09	-0.56%	5.99%
Kuwait	6377.83	-0.16%	15.00%
Oman	4102.84	0.11%	12.14%
Qatar	10799.85	-0.26%	3.49%
KSA	11001.03	-0.28%	26.60%
Dubai	2803.17	-0.03%	12.49%
Abu Dhabi	6995.32	0.67%	38.65%

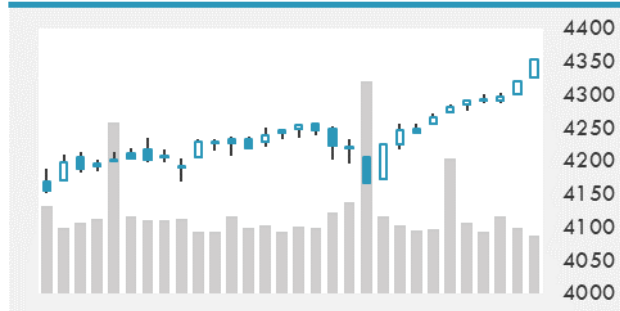
MSCI GCC INDEX - 30 DAYS CHART

LOCAL/GCC FOREIGN EXCHANGE

	Cross	Last Price
Lebanese Pound Spot	USD/LBP	1515.5
Bahraini Dinar Spot	USD/BHD	0.37701
Kuwaiti Dinar Spot	USD/KWD	0.301
Omani Rial Spot	USD/OMR	0.38499
Qatari Riyal Spot	USD/QAR	3.6406
Saudi Riyal Spot	USD/SAR	3.7505
UAE Dirham Spot	USD/AED	3.673

GCC INDICES DAILY PERFORMANCE


UNITED STATES EQUITY MARKET INDICES

	Last Price	Daily %	YTD %	Δ10D Vol
Major Indices				
Dow Jones	34786.35	0.00%	13.66%	-3.46%
S&P 500	4352.34	0.00%	15.87%	-2.53%
Nasdaq	14639.33	0.00%	13.59%	0.03%
Sectors Indices				
Discretionary	1453.51	0.00%	11.59%	1.19%
Staples	721.8	0.00%	3.66%	-1.63%
Energy	413.52	0.00%	44.52%	-8.28%
Financials	614.07	0.00%	25.21%	-3.85%
Healthcare	1495.32	0.00%	12.94%	-1.33%
Industrials	873.16	0.00%	16.49%	-5.36%
IT	2633.26	0.00%	14.93%	0.88%
Materials	520.31	0.00%	14.18%	-6.45%
Com. Services	269.14	0.00%	21.28%	0.03%
Utilities	325.48	0.00%	2.01%	-1.87%
Real Estate	279.72	0.00%	22.74%	-5.21%

S&P 500 INDEX - 30 DAYS CHART

S&P 500 SUPPORT & RESISTANCE


- U.S. stocks markets were closed on Monday in observance of Independence Day since the holiday fell during the weekend this year.
- European equities climbed as investors weighed the prospects of economic recovery against Covid-19 risks, in addition to digesting U.K. corporate deal news.
- Asian stocks were mixed Tuesday. Japanese stocks made modest gains while those in Hong Kong and China slipped. Lingering concerns about China's cybersecurity crackdown are shadowing the nation's stock market.

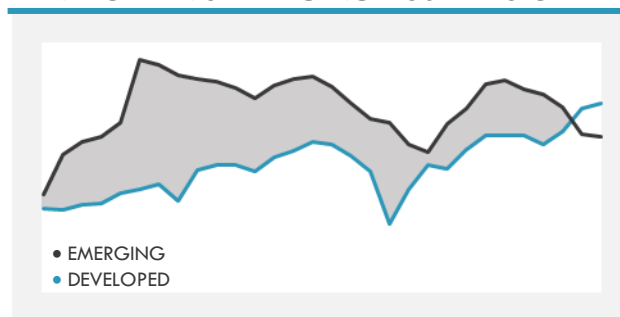
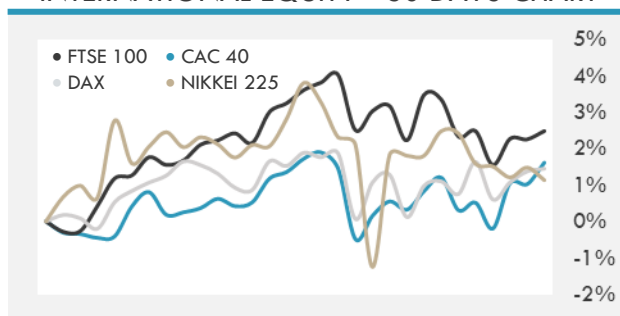
Source: Bloomberg, Financial Times, Reuters

INTERNATIONAL MARKETS INDICES

	Last Price	Daily %	YTD %	Δ10D Vol
World	1771.77	0.10%	12.13%	-0.71%
Developed	3049.84	0.12%	13.24%	-1.00%
Emerging	1354.47	-0.07%	4.97%	0.44%
Frontier	2593.57	-0.01%	0.08%	0.13%
Europe	151.78	0.32%	14.53%	-0.64%
Latin America	2600.52	-0.66%	6.77%	0.25%
Asia Pacific	206.21	0.08%	3.07%	-3.39%

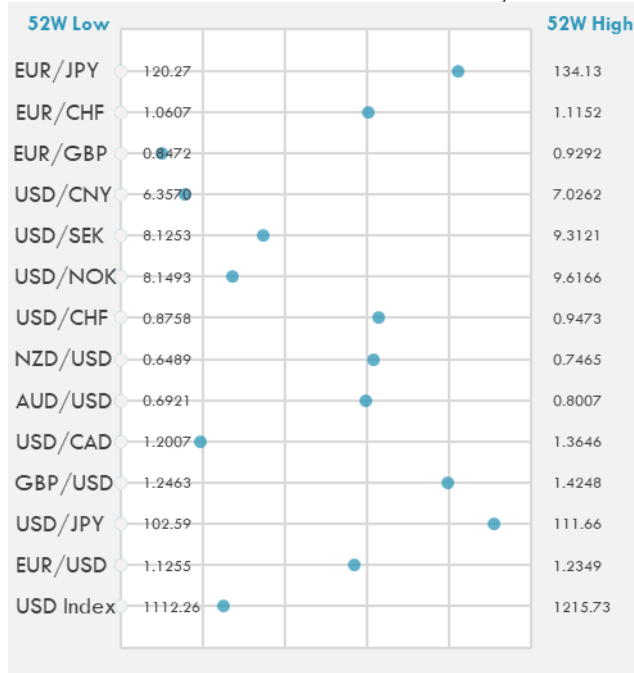
INTERNATIONAL EQUITY INDICES

	Last Price	Daily %	YTD %	Δ10D Vol
EuroStoxx 50	4087.37	0.07%	14.97%	-0.69%
FTSE 100	7164.91	0.58%	10.26%	-0.35%
CAC 40	6567.54	0.22%	18.04%	-0.42%
DAX	15661.97	0.08%	14.08%	-1.05%
Swiss SMI	11967.57	0.02%	11.78%	-0.41%
Nikkei 225	28682.77	-0.35%	4.51%	-8.66%
CSI 300	5056.59	-0.48%	-2.97%	8.78%

DEVELOPED VS EMERGING - 30 DAYS CHART

INTERNATIONAL EQUITY - 30 DAYS CHART


FOREIGN EXCHANGE MARKET

	Last Price	Daily %	Δ10D	Vol 25	ΔRR
Major USD Cross Rate					
USD Index	1138.15	-0.15%	0.10%	-	
EUR/USD	1.1878	0.11%	0.18%	-0.150	
USD/JPY	110.83	-0.20%	-0.19%	0.003	
GBP/USD	1.3887	0.46%	0.38%	-0.338	
USD/CAD	1.2324	0.02%	0.07%	0.450	
AUD/USD	0.7569	0.57%	0.46%	-0.605	
NZD/USD	0.7089	0.90%	1.38%	-0.568	
USD/CHF	0.9208	-0.01%	0.14%	0.370	
USD/NOK	8.5490	-0.54%	0.17%	0.983	
USD/SEK	8.5366	-0.08%	0.32%	0.355	
USD/CNY	6.4622	-0.17%	-0.05%	0.350	
Major EUR Cross Rate					
EUR/GBP	0.85535	-0.34%	-0.07%	0.088	
EUR/CHF	1.09368	0.10%	-0.02%	0.268	
EUR/JPY	131.65	-0.08%	-0.17%	-0.320	

DISTANCE FROM 52 WEEKS LOW/HIGH


- New Zealand's dollar gained by the most among its Group-of-10 peers after an upbeat business survey prompted local banks to bring forward their forecasts for the first Reserve Bank rate hike. The Aussie maintained a gain after the central bank indicated it would buy bonds at a slower pace.
- The British Pound is tipped by analysts to remain supported amidst expectations for a continued recovery of the UK economy, underpinned by the removal of all Covid-related restrictions by July 19.

Source: Bloomberg, Financial Times, Reuters

EUR/USD 30 DAYS SUPPORT & RESISTANCE

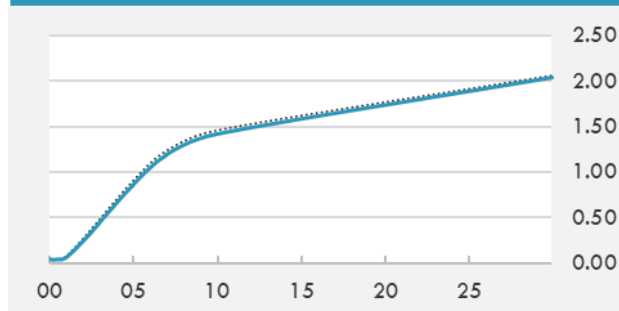
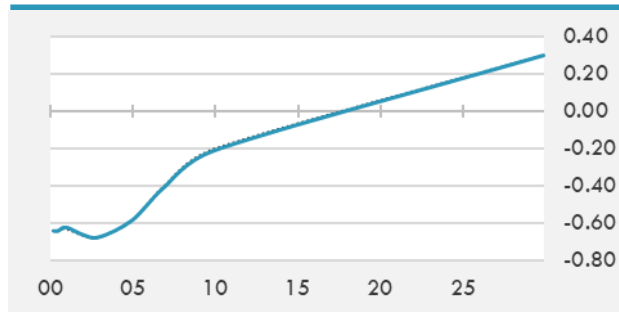
GBP/USD 30 DAYS SUPPORT & RESISTANCE

USD/JPY 30 DAYS SUPPORT & RESISTANCE

USD/CAD 30 DAYS SUPPORT & RESISTANCE


GLOBAL BOND INDICES

	Yield	ΔYield (in Bps)
Benchmark Indices		
US 10 Years Benchmark	1.4238	0.000
EU 10 Years Benchmark	-0.21	0.025
UK 10 Years Benchmark	0.703	-0.027
Sovereign Bonds		
US Treasury Bond	0.594	0
Eurozone Sovereign Bond	-0.428	0
Japan Sovereign Bond	-0.104	0
Corporate Bonds		
US Corporate TR	2.038	0.000
US High Yield Bond TR	3.690	0.000
EUR Aggregate Corporate TR	0.329	0.011
EUR High Yield TR	3.017	0.035
USD Emerging Market IG & HY	3.816	0.000

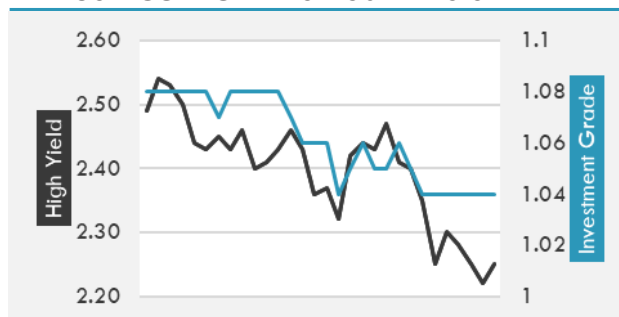
US TREASURIES YIELD CURVE

EUR GENERIC YIELD CURVE


- Treasuries soften from the cash open, with futures volumes running around 120% of normal. Treasury yields higher by 2bps across the long-end of the curve, pointing to some lightening up on bonds from investors after Friday's rally.
- Aussie bonds are heavy ahead of RBA decision, with 5-year point lagging on the curve, fueled by a spillover from continued selloff in N.Z. bonds as RBNZ outlook is repriced.
- Yields rose across the German sovereign yield curve in Monday afternoon trading.

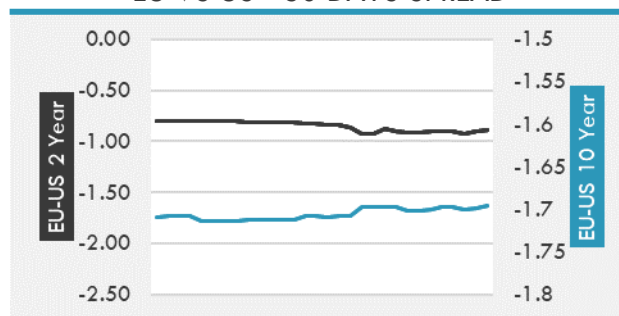
Source: Bloomberg, Financial Times, Economic times, Reuters

OVERNIGHT RATES - SWAPS

	Yield	ΔYield (in Bps)
3M USD LIBOR	0.138	0.000
3M EUR EURIBOR	-0.546	0.000
3M GBP LIBOR	0.079	0.000
3Y USD SWAP	0.556	0.000
5Y USD SWAP	0.933	-0.042
10Y USD SWAP	1.411	0.007
30Y USD SWAP	1.734	0.002

USD CORPORATES - 30 DAYS SPREAD

FIXED INCOME SPREADS

	Spread	ΔSpread (in Bps)
USD 3M vs 10Y Spread	1.373	0.000
USD 2Y vs 10Y Spread	1.188	0.000
USD IG Spread	1.040	0.000
USD HY Spread	2.250	0.030
EU vs US 10Y Spread	-1.634	0.025
EU vs US 2Y Spread	-0.894	0.011
EM vs Benchmark Spread	257.900	0.000

EU VS US - 30 DAYS SPREAD


GLOBAL COMMODITIES MARKET

	Last Price	Daily %
Commodity Index	95.93	1.01%

Energy

WTI Crude Future	76.7	2.05%
Brent Crude Future	77.53	1.79%
NYMEX Gasoline	232.42	1.06%
NYMEX Heat Oil	220.44	1.16%
ICE Gasoil	620.75	1.55%
NYMEX Natural Gas	3.803	2.78%

Precious Metals

Gold Spot \$/Oz	1802.02	0.82%
Silver Spot \$/Oz	26.6188	0.56%
Platinum Spot \$/Oz	1111.72	1.64%
Palladium Spot \$/Oz	2823.22	1.18%
Gold Future	1802.5	1.08%
Silver Future	26.735	0.88%
Platinum Future	1108.1	1.88%
Palladium Future	2823.5	1.11%

Base Metals

LME Aluminum	2556	-0.23%
LME Copper	9511	1.43%
LME Zinc	2946	0.36%
LME Nickel	18412	0.38%
LME Lead	2287	-0.59%
LME Tin	31665	0.46%

Agricultural

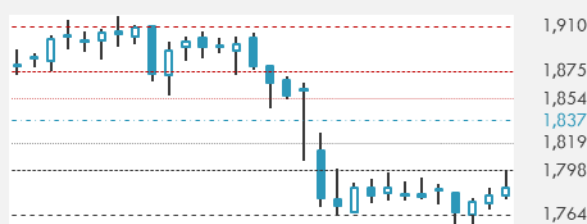
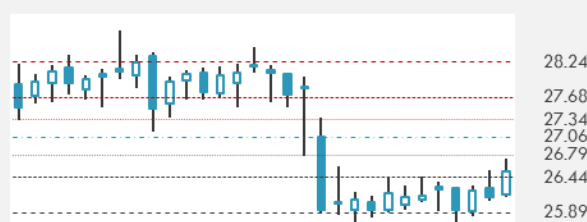
Corn CBT	579.75	0.00%
Wheat CBT	652.75	0.00%
Soybeans CBT	1399	0.00%
Bean Meal CBT	388.3	0.00%
Rough Rice CBT	13.145	0.00%
MDE Palm Oil	3950	4.25%
Soybean CBT	62.28	0.00%
Coffee ICE	153.05	0.00%
Sugar #11 ICE	18.15	0.00%
Cotton #2 ICE	88.13	1.33%
Cocoa ICE	2319	0.00%
Ethanol CME	2.38	0.00%
Lumber CME	787.3	0.00%
Orange Juice ICE	127.05	0.00%
Live Cattle CME	122	0.00%
Feeder Cattle CME	157.05	0.00%
Lean Hogs CME	100.225	0.00%

COMMODITY INDEX SUPPORT & RESISTANCE

WTI OIL 30 DAYS SUPPORT & RESISTANCE


- OPEC+ was plunged into crisis as a worsening fight between Saudi Arabia and the United Arab Emirates blocked an oil-supply increase.
- Gold edged toward a fifth daily gain as investors mulled the economic outlook before Federal Reserve minutes that will be scanned for clues on U.S. monetary policy.

Source: Bloomberg, Reuters

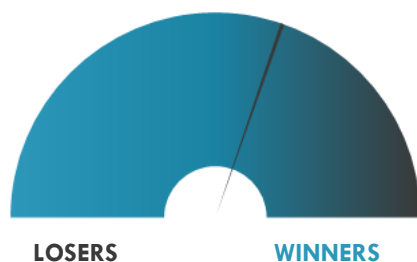
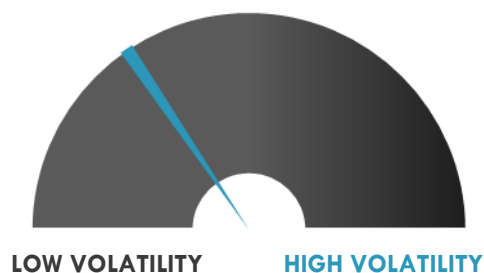
GOLD 30 DAYS SUPPORT & RESISTANCE

SILVER 30 DAYS SUPPORT & RESISTANCE


TOP 10 WINNERS

	Ticker	Last Price	Daily %
S&P 500 Stocks			
Oracle Corp	ORCL	81.82	+2.87%
Paycom Software Inc	PAYC	383.86	+2.75%
Hilton Worldwide Hold.	HLT	126.81	+2.58%
CarMax Inc	KMX	133.82	+2.48%
Fortinet Inc	FTNT	248.04	+2.35%
Alphabet Inc	GOOGL	2505.15	+2.30%
Amazon.com Inc	AMZN	3510.98	+2.27%
Microsoft Corp	MSFT	277.65	+2.23%
NRG Energy Inc	NRG	41.41	+2.20%
Gartner Inc	IT	253.69	+2.12%

TOP 10 LOSERS

	Ticker	Last Price	Daily %
S&P 500 Stocks			
Intern.Business Machine	IBM	140.02	-4.64%
Devon Energy Corp	DVN	29.23	-2.44%
Marathon Oil Corp	MR	13.85	-2.26%
Penn National Gaming	PENN	74.71	-2.19%
APA Corp	APA	21.47	-2.05%
Invesco Ltd	IVZ	26.43	-1.93%
ViacomCBS Inc	VIAC	44.16	-1.76%
Everest Re Group Ltd	RE	252.35	-1.74%
Norwegian Cruise Line	NCLH	29	-1.73%
Vulcan Materials Co	VMC	170.98	-1.64%

S&P 500 DISTRIBUTION

S&P VOLATILITY INDEX


- Aeon Delight Co. rose 4.6%. Trading volume was triple the average. The shares increased to 3,670 yen, higher than any close since Feb. 20, 2020, from 3,510 yen.
- Chong Kun Dang Pharmaceutical Corp. fell 3.2%. The shares declined to 137,000 won from 141,500 won. The stock was the worst performer among its peers.
- Prosperous Future Holdings raised HK\$24.6 million (\$3.2 million) following the completion of its private placement of 362 million shares at HK\$0.068 apiece.
- Saietta Group PLC, an Oxfordshire-based maker of electric motors, said it raised GBP37.5 million in its initial public offering on AIM, with trading to begin on Wednesday.
- Biolog Device Co. rose 17%. Trading volume was quadruple the average for this time of day. The shares increased to 5,660 won from 4,825 won.
- New Amsterdam Invest placed 2.45m units at EU20 each, representing a total offering value of EU49.1m, according to a statement. Trading on Euronext Amsterdam to start today.
- Leader Harmonious Drive Systems Co. fell 13%. The shares declined to 118 yuan, lower than any close since April 22, from 134.90 yuan.
- HCT Co. rose 6.6%. The shares increased to 18,550 won from 17,400 won.
- India's most valuable food delivery company Zomato is set to hit the Indian market with its much anticipated initial public offering. Market regulator SEBI officially gave its go-ahead to the food-tech unicorn to raise fund via the public offering. The company in April had filed its draft red herring prospectus with the market regulator, proposing an IPO of ₹8,250 crore.

KEY ECONOMIC INDICATORS

Country	Event	Surv (M)	Actual	Prior	Time
Australia	RBA Cash Rate Target	0.10%	0.10%	0.10%	7:30
Australia	RBA 3-Yr Yield Target	0.10%	0.10%	0.10%	7:30
Australia	ANZ Roy Morgan Consumer Confidence Index	--	107.8	112.2	2:30
Eurozone	ZEW Survey Expectations	--	--	81.3	12:00
Eurozone	Retail Sales MoM	4.30%	--	-3.10%	12:00
Eurozone	Retail Sales YoY	8.20%	--	23.90%	12:00
Germany	ZEW Survey Expectations	75.2	--	79.8	12:00
Germany	ZEW Survey Current Situation	5.5	--	-9.1	12:00
Germany	Factory Orders MoM	0.90%	--	-0.20%	9:00
Germany	Factory Orders WDA YoY	59.40%	--	78.90%	9:00
Germany	Markit Germany Construction PMI	--	--	44.5	10:30
Japan	Labor Cash Earnings YoY	2.10%	1.90%	1.60%	2:30
Japan	Household Spending YoY	11.00%	11.60%	13.00%	2:30
Slovakia	Retail Sales YoY	--	--	11.50%	10:00
Spain	Industrial Output SA YoY	22.10%	--	48.20%	10:00
Spain	Industrial Output NSA YoY	--	--	50.30%	10:00
United Kingdom	Markit/CIPS UK Construction PMI	64	--	64.2	11:30
United States	ISM Services Index	63.5	--	64	17:00
United States	Markit US Services PMI	64.8	--	64.8	16:45
United States	Markit US Composite PMI	--	--	63.9	16:45

Source: Bloomberg

Banque BEMO sal

Head Office - Private and Corporate Banking

Elias Sarkis Ave., Bemo Bldg , Ashrafieh - Lebanon
Tel: +961 1 200 505 Fax: +961 1 217 860

Research & Development research@bemobank.com

Elias Sarkis Ave., Bemo Bldg , Ashrafieh - Lebanon
Tel: +961 1 200 505 Fax: +961 1 217 860

Disclaimer:

This report is published for information purposes only. The information herein has been compiled from, or based upon sources considered to be reliable (Bloomberg, SeekingAlpha, DailyStar...), but we do not guarantee or assume responsibility for its completeness and accuracy. This document should not be construed as a solicitation to take part in any investment, or as constituting any representation or warranty on our part. This report is not to be relied upon in substitution for the exercise of specialists.

We may not have taken any steps to ensure that the securities referred to in this report are suitable for any particular investor. The investments and services contained or referred to herein are not purported to be exhaustive, any person considering an investment should seek specialist advice on the suitability of an investment.

Nothing in this report constitutes investment, legal, accounting or tax advice, or a representation that any investment or strategy is suitable or appropriate to your individual circumstances, or otherwise constitutes a personal recommendation. Clients understand that it is their responsibility to seek legal and/or tax advice regarding the legal and tax consequences of their investment transactions. The consequences of any action taken on the basis of information contained herein are solely the responsibility of the recipient.

Investment instruments are subject to risk, including possible loss of principal amount invested. Past performance should not be taken as an indication or guarantee of future performance, and no representation or warranty, express or implied, is made regarding future performance. The value of securities and financial instruments is subject to exchange rate fluctuation that may have a positive or adverse effect on the price or income of such securities or financial instruments. Some investments mentioned in this report may have a high level of volatility. High volatility investments may experience sudden and large falls in their value causing losses when that investment is realized. Some investments may not be readily realizable and it may be difficult to sell or realize those investments, similarly it may prove difficult to obtain reliable information about the value, or risks, to which such an investment is exposed.

This report may provide the addresses of websites or references. We have not reviewed any such site and takes no responsibility for the content contained therein. Such address or reference is provided solely for convenience and information. Accessing such website through this report shall be at the recipients own risk.