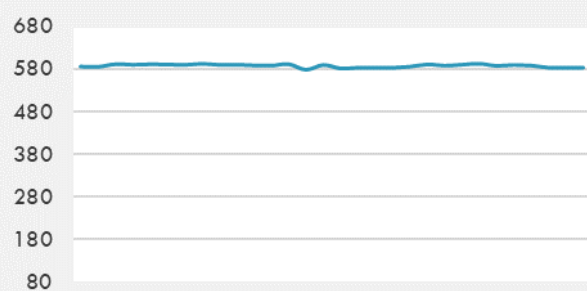
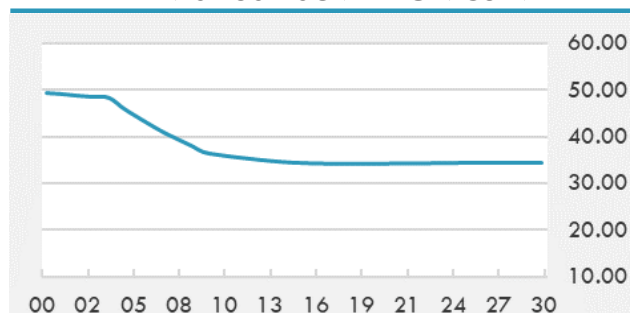


BEIRUT STOCK EXCHANGE

	Last	Daily %	YTD %	Dividend %
MSCI Lebanon	583.85	0.01%	33.38%	
Development and Reconstruction				
Solidere A	24.61	0.04%	33.03%	
Solidere B	24.59	-0.08%	34.45%	
Banking				
Audi Listed	2.1	-4.11%	72.13%	
BLC Listed	0.93	0.00%	0.00%	
BOB Listed	17.8	0.00%	0.00%	
Byblos Listed	0.93	0.00%	75.47%	
BEMO Listed	1.2	0.00%	0.00%	
BLOM Listed	3.38	0.00%	63.29%	
Trading				
RYMCO	3.19	0.00%	0.00%	
Industrial				
Holcim	17.2	1.18%	18.62%	
Ciments Blancs	4.5	0.00%	9.76%	

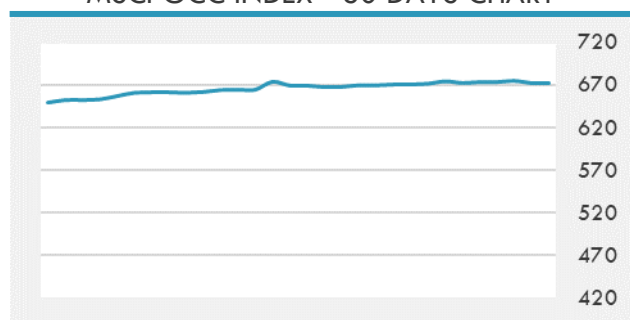
MSCI LEBANON INDEX - 30 DAYS CHART

LEBANESE USD SOVEREIGN CURVE


- Saudi Arabia's Capital Market Authority has completed the requirements for issuing the securities business licence for Erteqa Financial Company, the Saudi Exchange announced on Tuesday.
- The majority of GCC consumers, about 85% of respondents to a survey, would currently opt for digital banking services rather than visiting a bank branch, according to a paper by Backbase with YouGov.

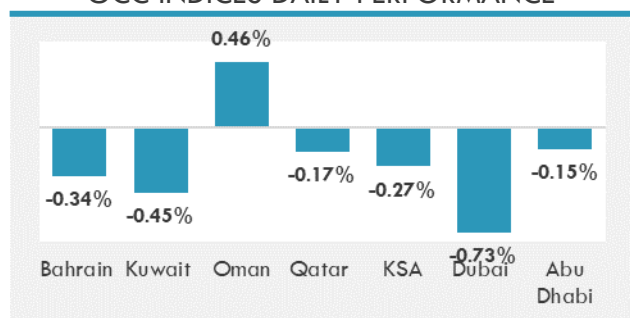
Source: Daily Star, Gulf Business, Mubasher, Bloomberg, Businessnews LB

GCC EQUITY INDICES

	Last Price	Daily %	YTD %
Bahrain	1573.77	-0.34%	5.64%
Kuwait	6348.94	-0.45%	14.48%
Oman	4121.52	0.46%	12.65%
Qatar	10781.41	-0.17%	3.31%
KSA	10971.21	-0.27%	26.26%
Dubai	2782.69	-0.73%	11.67%
Abu Dhabi	6984.89	-0.15%	38.44%

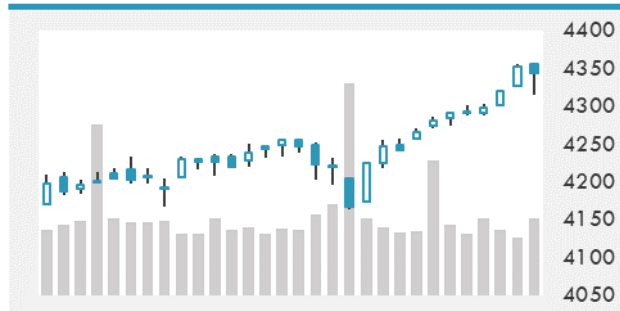
MSCI GCC INDEX - 30 DAYS CHART

LOCAL/GCC FOREIGN EXCHANGE

	Cross	Last Price
Lebanese Pound Spot	USD/LBP	1515.5
Bahraini Dinar Spot	USD/BHD	0.377
Kuwaiti Dinar Spot	USD/KWD	0.301
Omani Rial Spot	USD/OMR	0.385
Qatari Riyal Spot	USD/QAR	3.6412
Saudi Riyal Spot	USD/SAR	3.751
UAE Dirham Spot	USD/AED	3.673

GCC INDICES DAILY PERFORMANCE


UNITED STATES EQUITY MARKET INDICES

	Last Price	Daily %	YTD %	Δ10D Vol
Major Indices				
Dow Jones	34577.37	0.00%	12.97%	1.48%
S&P 500	4343.54	0.00%	15.64%	0.65%
Nasdaq	14663.64	0.00%	13.77%	-0.39%
Sectors Indices				
Discretionary	1464.35	0.00%	12.42%	-0.75%
Staples	718.84	0.00%	3.23%	0.50%
Energy	400.28	0.00%	39.89%	5.74%
Financials	604.53	0.00%	23.27%	3.87%
Healthcare	1494.01	0.00%	12.84%	0.29%
Industrials	865.05	0.00%	15.41%	2.09%
IT	2642.88	0.00%	15.35%	-0.30%
Materials	512.84	0.00%	12.54%	4.27%
Com. Services	268.9	0.00%	21.17%	-0.03%
Utilities	326.92	0.00%	2.46%	-0.24%
Real Estate	282.1	0.00%	23.78%	1.00%

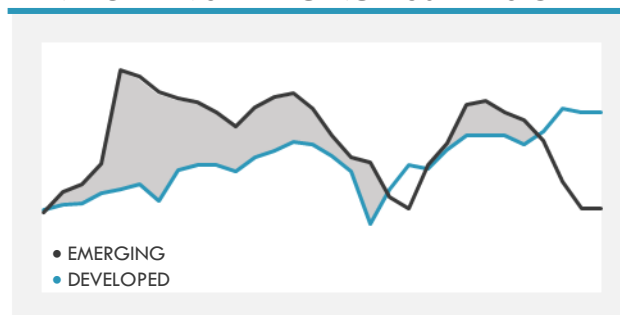
S&P 500 INDEX - 30 DAYS CHART

S&P 500 SUPPORT & RESISTANCE


- The S&P 500 Index fell and headed for its first decline in eight sessions, as investors assessed the breakdown in OPEC+ talks while looking ahead to Wednesday's Federal Reserve meeting minutes.
- European equities fell as investors shifted out of some of this year's best-performing cyclical sectors amid concerns about an economic revival.
- Asian equities declined. China's widening corporate crackdown damped investor sentiment.

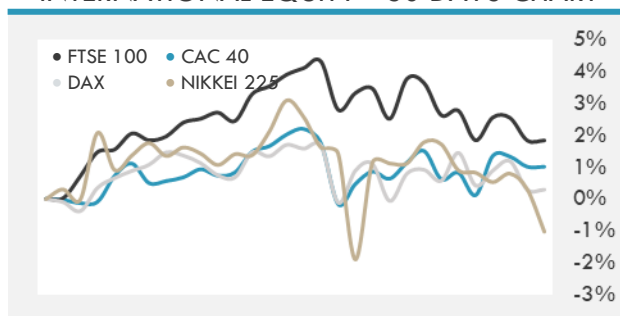
Source: Bloomberg, Financial Times, Reuters

INTERNATIONAL MARKETS INDICES

	Last Price	Daily %	YTD %	Δ10D Vol
World	1766.79	0.00%	11.93%	0.25%
Developed	3042.63	0.00%	13.11%	-0.28%
Emerging	1346.58	0.00%	4.28%	-1.42%
Frontier	2558.22	0.00%	-1.30%	4.43%
Europe	150.96	0.00%	14.28%	-0.34%
Latin America	2524.12	0.00%	2.95%	5.28%
Asia Pacific	206.1	0.00%	3.09%	-1.48%

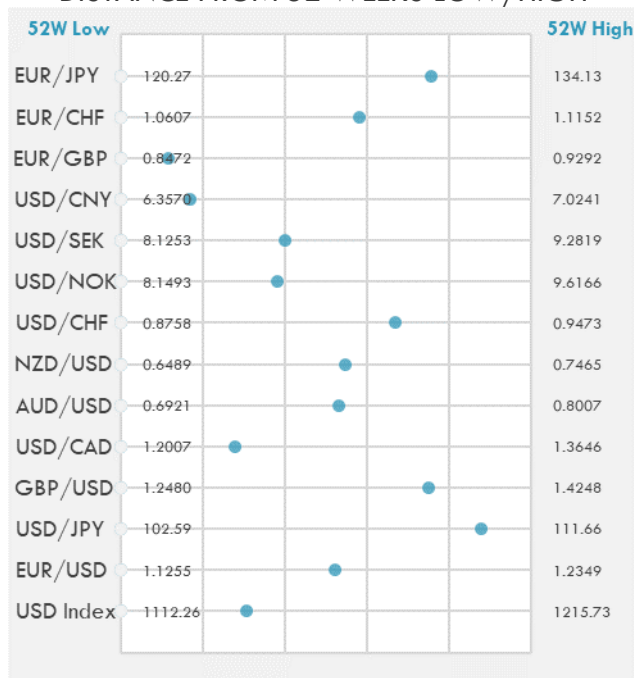
DEVELOPED VS EMERGING - 30 DAYS CHART

INTERNATIONAL EQUITY INDICES

	Last Price	Daily %	YTD %	Δ10D Vol
EuroStoxx 50	4052.67	0.00%	14.07%	-0.89%
FTSE 100	7100.88	0.00%	9.91%	1.46%
CAC 40	6507.48	0.00%	17.22%	0.07%
DAX	15511.38	0.00%	13.07%	-0.64%
Swiss SMI	11965.22	0.00%	11.79%	-1.24%
Nikkei 225	28258.95	-1.34%	2.97%	-10.63%
CSI 300	5120.48	0.74%	-1.74%	-0.62%

INTERNATIONAL EQUITY - 30 DAYS CHART


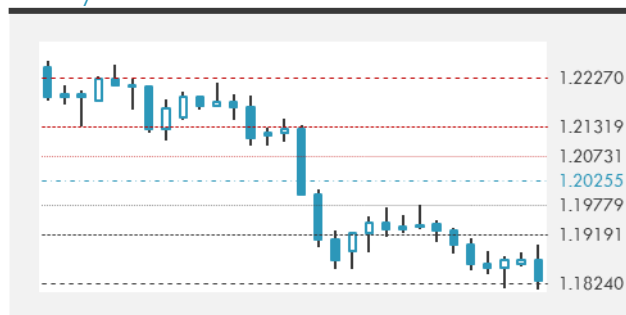
FOREIGN EXCHANGE MARKET

	Last Price	Daily %	Δ10D	Vol 25	ΔRR
Major USD Cross Rate					
USD Index	1143.9	-0.04%	-0.24%	-	
EUR/USD	1.1827	0.03%	-0.04%	-0.183	
USD/JPY	110.57	-0.05%	-0.01%	-0.035	
GBP/USD	1.3807	0.05%	-0.03%	-0.333	
USD/CAD	1.2464	0.02%	0.03%	0.533	
AUD/USD	0.75	0.04%	-0.06%	-0.635	
NZD/USD	0.7024	0.19%	0.00%	-0.565	
USD/CHF	0.9236	-0.06%	0.00%	0.338	
USD/NOK	8.7074	0.05%	-0.66%	1.010	
USD/SEK	8.5880	-0.07%	-0.44%	0.333	
USD/CNY	6.4697	-0.15%	0.13%	0.350	
Major EUR Cross Rate					
EUR/GBP	0.85664	-0.02%	-0.37%	0.048	
EUR/CHF	1.09238	-0.06%	0.00%	0.290	
EUR/JPY	130.77	-0.03%	0.00%	-0.398	

DISTANCE FROM 52 WEEKS LOW/HIGH


- The yen advanced to its highest in two weeks on haven demand amid growing doubts about the strength of the U.S. economic recovery.
- South Korea's won and the Philippine peso led declines in Asia as a Covid-19 resurgence in the region weighed on the recovery hopes.
- A mid-year foreign exchange research and strategy review from French investment bank Société Générale shows they now look to sell the Euro against the Pound in anticipation of Sterling outperformance.

Source: Bloomberg, Financial Times, Reuters

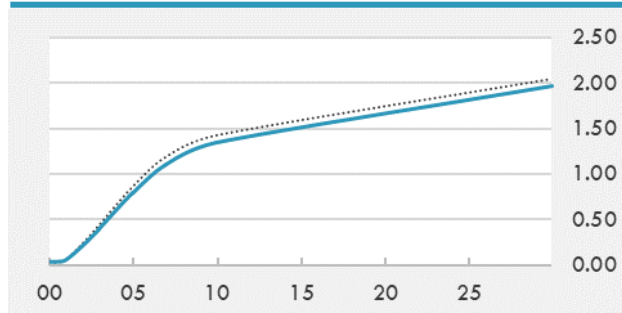
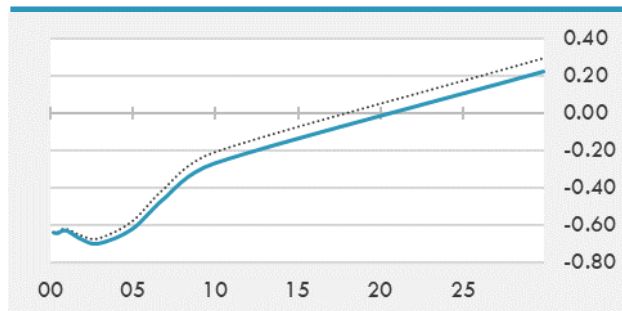
EUR/USD 30 DAYS SUPPORT & RESISTANCE

GBP/USD 30 DAYS SUPPORT & RESISTANCE

USD/JPY 30 DAYS SUPPORT & RESISTANCE

USD/CAD 30 DAYS SUPPORT & RESISTANCE


GLOBAL BOND INDICES

	Yield	ΔYield (in Bps)
Benchmark Indices		
US 10 Years Benchmark	1.3481	-0.076
EU 10 Years Benchmark	-0.268	-0.058
UK 10 Years Benchmark	0.634	-0.069
Sovereign Bonds		
US Treasury Bond	0.594	0
Eurozone Sovereign Bond	-0.428	0
Japan Sovereign Bond	-0.104	0
Corporate Bonds		
US Corporate TR	1.989	-0.049
US High Yield Bond TR	3.528	-0.162
EUR Aggregate Corporate TR	0.295	-0.034
EUR High Yield TR	3.003	-0.015
USD Emerging Market IG & HY	3.825	0.009

US TREASURIES YIELD CURVE

EUR GENERIC YIELD CURVE


- Treasury yields have dropped to a four-month low as a gauge of U.S. service-sector activity faltered, with short covering exacerbating the move.
- Aussie and Kiwi yields were reset lower and remain choppy through the day. Offers into BOJ QE ticked higher amid set-up for upcoming sale.
- Italian bonds lead peripheral outperformance over euro-area peers amid demand for carry trades, pushing the yield differential between 10-year BTPs and German bonds below 100bps.

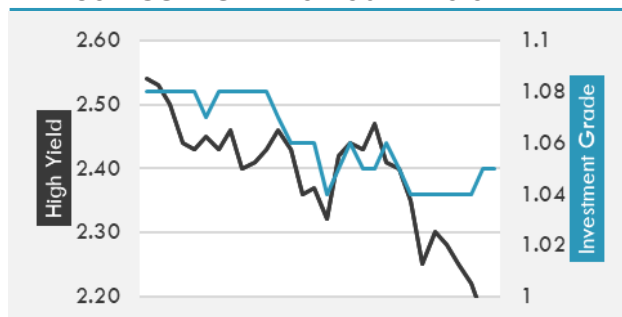
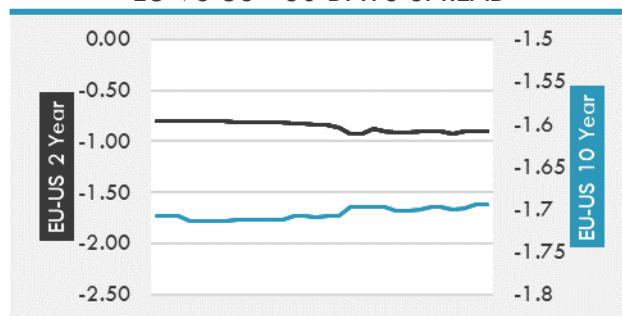
Source: Bloomberg, Financial Times, Economic times, Reuters

OVERNIGHT RATES - SWAPS

	Yield	ΔYield (in Bps)
3M USD LIBOR	0.138	0.000
3M EUR EURIBOR	-0.542	0.000
3M GBP LIBOR	0.079	0.000
3Y USD SWAP	0.524	-0.032
5Y USD SWAP	0.873	-0.060
10Y USD SWAP	1.326	-0.086
30Y USD SWAP	1.659	-0.076

FIXED INCOME SPREADS

	Spread	ΔSpread (in Bps)
USD 3M vs 10Y Spread	1.297	-0.076
USD 2Y vs 10Y Spread	1.128	-0.060
USD IG Spread	1.050	0.010
USD HY Spread	2.170	-0.080
EU vs US 10Y Spread	-1.616	0.019
EU vs US 2Y Spread	-0.896	-0.002
EM vs Benchmark Spread	257.900	0.000

USD CORPORATES - 30 DAYS SPREAD

EU VS US - 30 DAYS SPREAD


GLOBAL COMMODITIES MARKET

	Last Price	Daily %
Commodity Index	93.24	0.48%

Energy

WTI Crude Future	73.46	0.12%
Brent Crude Future	74.65	0.16%
NYMEX Gasoline	223.38	0.25%
NYMEX Heat Oil	211.55	0.50%
ICE Gasoil	598.5	-0.04%
NYMEX Natural Gas	3.685	1.32%

Precious Metals

Gold Spot \$/Oz	1800.28	0.18%
Silver Spot \$/Oz	26.2376	0.30%
Platinum Spot \$/Oz	1092.15	-0.22%
Palladium Spot \$/Oz	2792.34	-0.15%
Gold Future	1800.2	0.33%
Silver Future	26.32	0.56%
Platinum Future	1086.8	0.26%
Palladium Future	2795	-0.04%

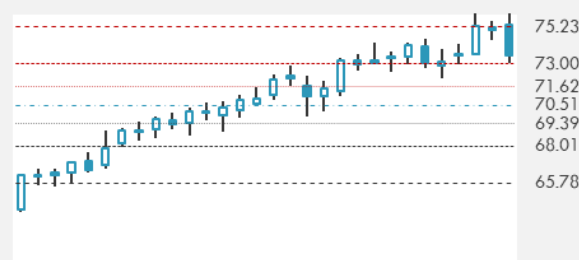
Base Metals

LME Aluminum	2530	0.00%
LME Copper	9312	0.00%
LME Zinc	2935	0.00%
LME Nickel	17994	0.00%
LME Lead	2294	0.00%
LME Tin	31669	0.00%

Agricultural

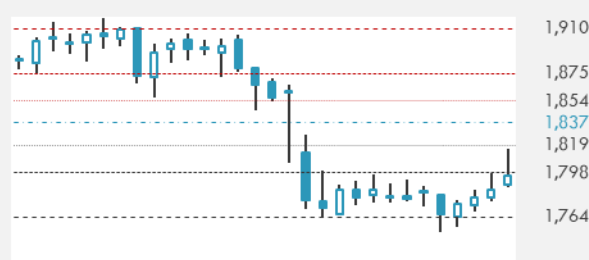
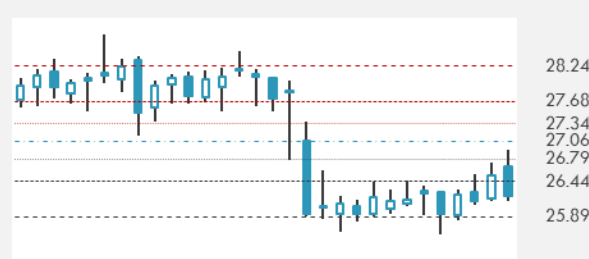
Corn CBT	540.75	0.19%
Wheat CBT	631.25	0.84%
Soybeans CBT	1330.25	1.93%
Bean Meal CBT	368.7	1.74%
Rough Rice CBT	12.84	0.16%
MDE Palm Oil	3787	-1.66%
Soybean CBT	59.3	0.88%
Coffee ICE	148.1	0.00%
Sugar #11 ICE	17.87	0.00%
Cotton #2 ICE	87.33	-0.08%
Cocoa ICE	2298	0.00%
Ethanol CME	2.38	0.00%
Lumber CME	820.4	0.00%
Orange Juice ICE	122.1	0.00%
Live Cattle CME	122.4	0.00%
Feeder Cattle CME	160.625	0.00%
Lean Hogs CME	102.35	0.00%

COMMODITY INDEX SUPPORT & RESISTANCE

WTI OIL 30 DAYS SUPPORT & RESISTANCE


- Biden administration officials are “encouraged” by ongoing OPEC talks and have spoken with officials in Saudi Arabia and the United Arab Emirates in hopes of reaching an agreement to stem the rise in crude prices, White House Press Secretary Jen Psaki said.

Source: Bloomberg, Reuters

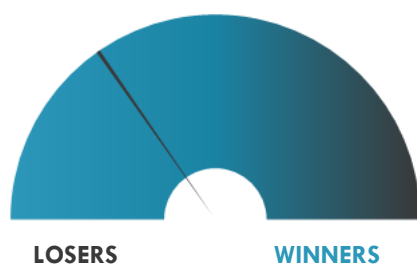
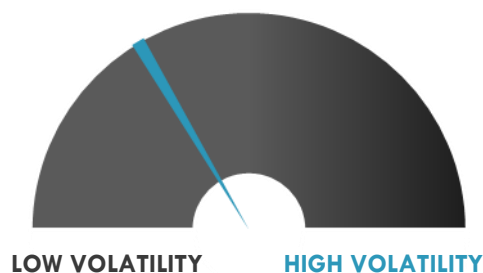
GOLD 30 DAYS SUPPORT & RESISTANCE

SILVER 30 DAYS SUPPORT & RESISTANCE


TOP 10 WINNERS

	Ticker	Last Price	Daily %
S&P 500 Stocks			
Amazon.com Inc	AMZN	3675.74	+4.69%
Generac Holdings Inc	GNRC	429.35	+3.41%
ABIOMED Inc	ABMD	326.71	+3.06%
Arista Networks Inc	ANET	374.93	+2.55%
Extra Space Storage Inc	EXR	170.84	+2.39%
Equinix Inc	EQIX	819.11	+2.32%
Dexcom Inc	DXCM	440.65	+2.10%
NortonLifeLock Inc	NLOK	27.73	+1.95%
Hologic Inc	HOLX	69.02	+1.93%
American Water Works	AWK	159.88	+1.91%

TOP 10 LOSERS

	Ticker	Last Price	Daily %
S&P 500 Stocks			
Diamondback Energy	FANG	91.17	-7.03%
Halliburton Co	HAL	22.23	-6.52%
Occidental Petroleum	OXY	30.51	-6.35%
NOV Inc	NOV	14.54	-6.31%
Schlumberger NV	SLB	31.17	-4.94%
Baker Hughes Co	BKR	22.41	-4.84%
Devon Energy Corp	DVN	27.84	-4.76%
Cabot Oil & Gas Corp	COG	17	-4.71%
MGM Resorts	MGM	41.25	-4.62%
Marathon Oil Corp	MRO	13.21	-4.62%

S&P 500 DISTRIBUTION

S&P VOLATILITY INDEX


- SPAC Athena Technology rose 5.3% in after hours trading on a report that the firm is in talk to take the concentrated solar energy company Heliogen public.
- Immersion shares gained 9.5% after hours after guiding for fiscal Q2 revenue of \$10.5-11M (consensus: \$8.6M), non-GAAP EPS of \$0.22-0.23 (consensus: \$0.66), and operating expenses of \$3.9-4.3M.
- SMART Global shares were up 6% after the company reported fiscal third quarter results that topped consensus estimates with revenue of \$437.73M, up 56% on the year, and EPS of \$1.39, topping estimates by \$0.30.
- China-based trucking services provider MingZhu Logistics traded 26.17% higher post-market on announcing a non-binding memorandum of understanding to acquire a controlling equity interest in Zhejiang CheYi Network Technology Co.
- NextCure announced the initiation of a Phase 1/2 clinical trial for NC762, a humanized B7-H4 monoclonal antibody, in certain patients with solid tumors.
- OncoSec Medical has entered into a clinical trial collaboration and supply agreement with Merck to evaluate the combination of TAVO with Keytruda in a global late-stage trial.
- Opiant Pharmaceuticals announced positive top-line results from its confirmatory pharmacokinetic study for OPNT003, nasal nalmefene, for opioid overdose.
- The Dep. of Justice's trial challenging Aon's planned purchase of Willis Towers Watson is set to start Nov. 18. Willis Towers fell 0.9%, while AON dropped 0.6%.

KEY ECONOMIC INDICATORS

Country	Event	Surv (M)	Actual	Prior	Time
Australia	Foreign Reserves	--	--	6.21E+10	9:30
Austria	Wholesale Price Index YoY	--	--	10.90%	10:00
Canada	Ivey Purchasing Managers Index SA	--	--	64.7	17:00
China	Foreign Reserves	3.20E+12	--	3.22E+12	
Estonia	CPI YoY	--	3.80%	3.60%	8:00
Estonia	CPI MoM	--	1.20%	0.90%	8:00
France	Current Account Balance	--	--	-1.40E+09	9:45
France	Trade Balance	-6.10E+09	--	-6.24E+09	9:45
Germany	Industrial Production SA MoM	0.50%	--	-1.00%	9:00
Germany	Industrial Production WDA YoY	17.70%	--	26.40%	9:00
Ireland	Industrial Production MoM	--	--	-0.20%	13:00
Italy	Retail Sales MoM	3.00%	--	-0.40%	11:00
Italy	Retail Sales YoY	10.80%	--	30.40%	11:00
Japan	Leading Index CI	102.7	102.6	103.8	8:00
Japan	Coincident Index	92.7	92.7	95.3	8:00
Lithuania	International Reserves	--	--	4.37E+09	10:00
United Kingdom	Output Per Hour YoY	--	--	1.00%	11:30
United States	MBA Mortgage Applications	--	--	-6.90%	14:00
United States	JOLTS Job Openings	9.33E+06	--	9.29E+06	17:00
United States	FOMC Meeting Minutes	--	--	--	21:00

Source: Bloomberg

Banque BEMO sal

Head Office - Private and Corporate Banking

Elias Sarkis Ave., Bemo Bldg , Ashrafieh - Lebanon
Tel: +961 1 200 505 Fax: +961 1 217 860

Research & Development research@bemobank.com

Elias Sarkis Ave., Bemo Bldg , Ashrafieh - Lebanon
Tel: +961 1 200 505 Fax: +961 1 217 860

Disclaimer:

This report is published for information purposes only. The information herein has been compiled from, or based upon sources considered to be reliable (Bloomberg, SeekingAlpha, DailyStar...), but we do not guarantee or assume responsibility for its completeness and accuracy. This document should not be construed as a solicitation to take part in any investment, or as constituting any representation or warranty on our part. This report is not to be relied upon in substitution for the exercise of specialists.

We may not have taken any steps to ensure that the securities referred to in this report are suitable for any particular investor. The investments and services contained or referred to herein are not purported to be exhaustive, any person considering an investment should seek specialist advice on the suitability of an investment.

Nothing in this report constitutes investment, legal, accounting or tax advice, or a representation that any investment or strategy is suitable or appropriate to your individual circumstances, or otherwise constitutes a personal recommendation. Clients understand that it is their responsibility to seek legal and/or tax advice regarding the legal and tax consequences of their investment transactions. The consequences of any action taken on the basis of information contained herein are solely the responsibility of the recipient.

Investment instruments are subject to risk, including possible loss of principal amount invested. Past performance should not be taken as an indication or guarantee of future performance, and no representation or warranty, express or implied, is made regarding future performance. The value of securities and financial instruments is subject to exchange rate fluctuation that may have a positive or adverse effect on the price or income of such securities or financial instruments. Some investments mentioned in this report may have a high level of volatility. High volatility investments may experience sudden and large falls in their value causing losses when that investment is realized. Some investments may not be readily realizable and it may be difficult to sell or realize those investments, similarly it may prove difficult to obtain reliable information about the value, or risks, to which such an investment is exposed.

This report may provide the addresses of websites or references. We have not reviewed any such site and takes no responsibility for the content contained therein. Such address or reference is provided solely for convenience and information. Accessing such website through this report shall be at the recipients own risk.