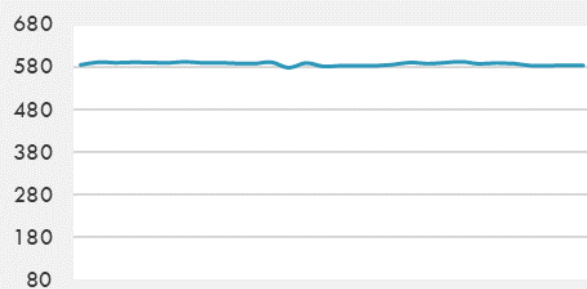
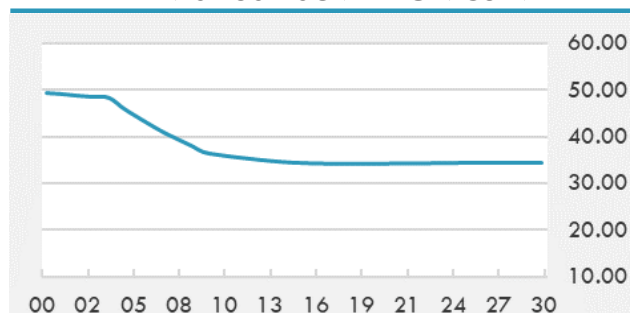


BEIRUT STOCK EXCHANGE

	Last	Daily %	YTD %	Dividend %
MSCI Lebanon	584.43	0.10%	33.51%	
Development and Reconstruction				
Solidere A	24.6	-0.04%	32.97%	
Solidere B	24.72	0.53%	35.16%	
Banking				
Audi Listed	2.1	0.00%	72.13%	
BLC Listed	0.93	0.00%	0.00%	
BOB Listed	17.8	0.00%	0.00%	
Byblos Listed	0.93	0.00%	75.47%	
BEMO Listed	1.2	0.00%	0.00%	
BLOM Listed	3.38	0.00%	63.29%	
Trading				
RYMCO	3.19	0.00%	0.00%	
Industrial				
Holcim	17.2	0.00%	18.62%	
Ciments Blancs	4.5	0.00%	9.76%	

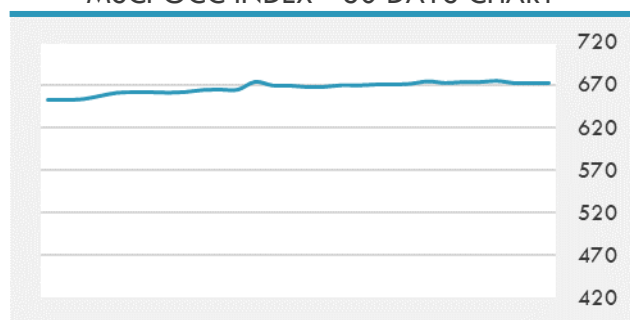
MSCI LEBANON INDEX - 30 DAYS CHART

LEBANESE USD SOVEREIGN CURVE


- The Tadawul All Share Index of the Saudi Exchange ended Wednesday in decline by 0.12% or 12.66 points at 10,958.55 points.
- The UAE stock markets have closed Wednesday's trading session in the red zone. The benchmark index of the Dubai Financial Market went down 0.02% to settle at 2,782.08 points by the end of Wednesday's trading session. As for the Abu Dhabi Securities Exchange, the main index inched down by about 0.22% to close Wednesday at 6,969.64 points.

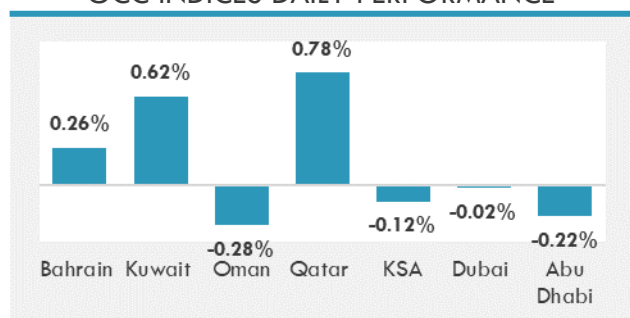
Source: Daily Star, Gulf Business, Mubasher, Bloomberg, Businessnews LB

GCC EQUITY INDICES

	Last Price	Daily %	YTD %
Bahrain	1577.86	0.26%	5.91%
Kuwait	6388.08	0.62%	15.18%
Oman	4109.9	-0.28%	12.33%
Qatar	10865.88	0.78%	4.12%
KSA	10958.55	-0.12%	26.11%
Dubai	2782.08	-0.02%	11.64%
Abu Dhabi	6969.64	-0.22%	38.14%

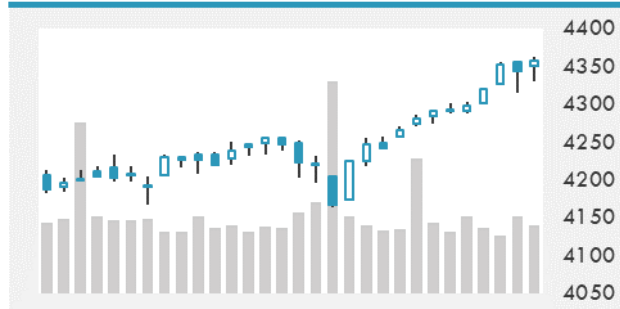
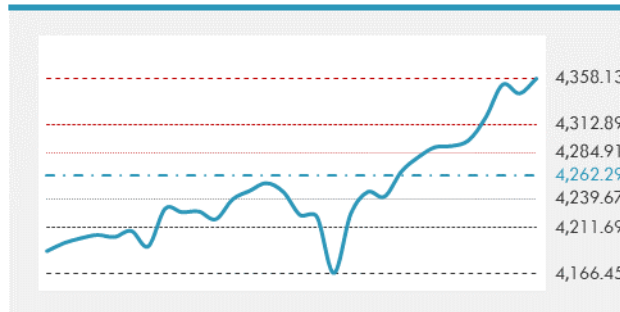
MSCI GCC INDEX - 30 DAYS CHART

LOCAL/GCC FOREIGN EXCHANGE

	Cross	Last Price
Lebanese Pound Spot	USD/LBP	1515.5
Bahraini Dinar Spot	USD/BHD	0.37699
Kuwaiti Dinar Spot	USD/KWD	0.3011
Omani Rial Spot	USD/OMR	0.38501
Qatari Riyal Spot	USD/QAR	3.6412
Saudi Riyal Spot	USD/SAR	3.7509
UAE Dirham Spot	USD/AED	3.673

GCC INDICES DAILY PERFORMANCE


UNITED STATES EQUITY MARKET INDICES

	Last Price	Daily %	YTD %	Δ10D Vol
Major Indices				
Dow Jones	34681.79	0.00%	13.32%	-0.37%
S&P 500	4358.13	0.00%	16.03%	-0.47%
Nasdaq	14665.06	0.00%	13.79%	0.14%
Sectors Indices				
Discretionary	1464.22	0.00%	12.41%	0.30%
Staples	722.83	0.00%	3.81%	-0.59%
Energy	393.37	0.00%	37.47%	0.69%
Financials	605.06	0.00%	23.37%	-0.03%
Healthcare	1503.2	0.00%	13.53%	-1.30%
Industrials	873.7	0.00%	16.56%	0.88%
IT	2655.92	0.00%	15.91%	-0.64%
Materials	518.05	0.00%	13.68%	1.10%
Com. Services	268.62	0.00%	21.04%	-0.16%
Utilities	328.83	0.00%	3.06%	-1.38%
Real Estate	283.58	0.00%	24.43%	-0.15%

S&P 500 INDEX - 30 DAYS CHART

S&P 500 SUPPORT & RESISTANCE


- The S&P 500 Index resumed its climb, closing at a fresh record as investors digested the minutes from the Federal Reserve's last meeting. U.S. equity futures rose slightly, with Nasdaq 100 contracts outperforming.
- European stocks were within sight of a record, as miners led a broad rally ahead of minutes from the latest Federal Reserve meeting.
- Asian equities dropped amid continued losses in Hong Kong-listed Chinese tech stocks and concern over coronavirus cases in Japan and South Korea.

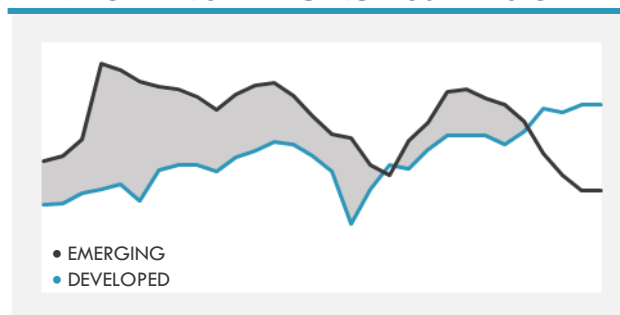
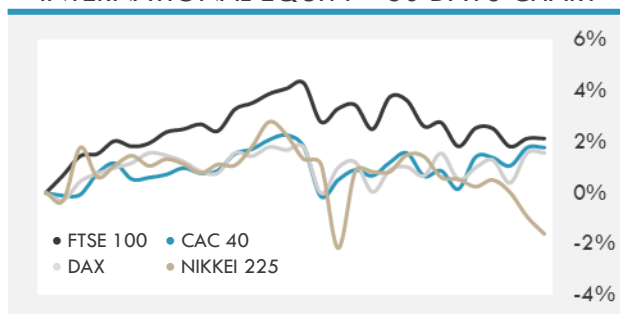
Source: Bloomberg, Financial Times, Reuters

INTERNATIONAL MARKETS INDICES

	Last Price	Daily %	YTD %	Δ10D Vol
World	1769.39	0.00%	12.09%	-0.59%
Developed	3049.66	0.00%	13.37%	-0.42%
Emerging	1340.68	0.00%	3.83%	-0.71%
Frontier	2566.82	0.00%	-0.97%	-0.08%
Europe	152.14	0.00%	15.17%	-0.30%
Latin America	2528.01	0.00%	3.11%	-3.14%
Asia Pacific	204.94	0.00%	2.51%	0.36%

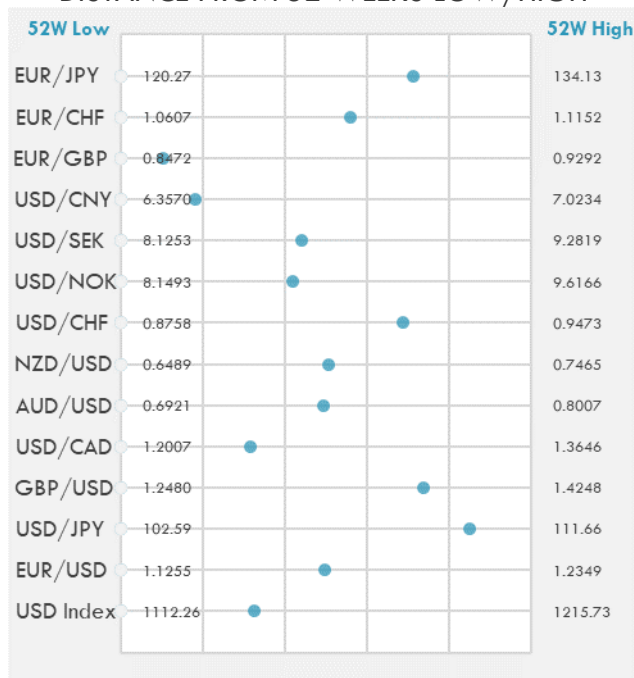
INTERNATIONAL EQUITY INDICES

	Last Price	Daily %	YTD %	Δ10D Vol
EuroStoxx 50	4078.53	0.00%	14.80%	-1.48%
FTSE 100	7151.02	0.00%	10.69%	0.30%
CAC 40	6527.72	0.00%	17.59%	-2.35%
DAX	15692.71	0.00%	14.39%	0.82%
Swiss SMI	12085.51	0.00%	12.91%	0.82%
Nikkei 225	28172.93	-0.68%	2.66%	1.35%
CSI 300	5094.91	-0.89%	-2.23%	1.09%

DEVELOPED VS EMERGING - 30 DAYS CHART

INTERNATIONAL EQUITY - 30 DAYS CHART


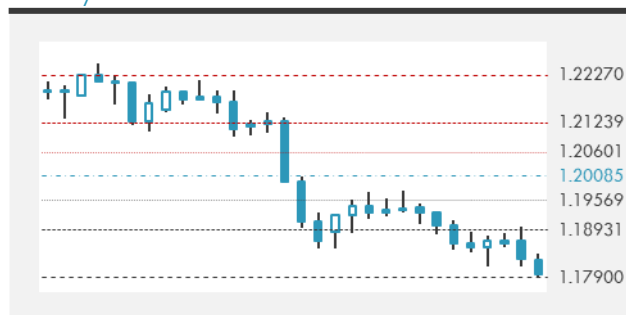
FOREIGN EXCHANGE MARKET

	Last Price	Daily %	Δ10D	Vol 25	ΔRR
Major USD Cross Rate					
USD Index	1146.02	0.04%	-0.13%	-	
EUR/USD	1.1798	0.07%	0.09%	-0.258	
USD/JPY	110.3	-0.33%	0.26%	-0.178	
GBP/USD	1.3787	-0.10%	-0.18%	-0.338	
USD/CAD	1.2526	0.36%	-0.31%	0.603	
AUD/USD	0.7459	-0.37%	-0.06%	-0.765	
NZD/USD	0.6985	-0.48%	0.16%	-0.755	
USD/CHF	0.9250	-0.05%	-0.01%	0.348	
USD/NOK	8.7622	0.41%	-0.21%	1.035	
USD/SEK	8.6351	0.14%	-0.01%	0.338	
USD/CNY	6.4776	0.07%	-0.46%	0.250	
Major EUR Cross Rate					
EUR/GBP	0.85573	0.16%	-0.39%	0.043	
EUR/CHF	1.09122	-0.02%	-0.01%	0.315	
EUR/JPY	130.13	-0.28%	-0.02%	-0.508	

DISTANCE FROM 52 WEEKS LOW/HIGH


- A gauge of the dollar retreated from a three-month high as traders cut back on long bets after deeming minutes of the Federal Open Market Committee June meeting not hawkish enough to warrant the positions.
- The Canadian dollar advanced Wednesday with other resource-linked currencies as oil and a key index of commodities climbed.
- The yen fell back from a two-week high as a decline in U.S. Treasury yields halted in Asian trading.

Source: Bloomberg, Financial Times, Reuters

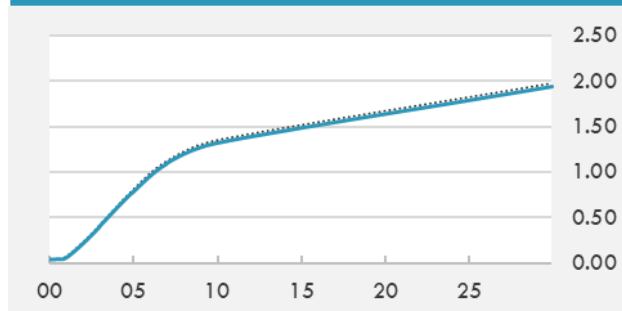
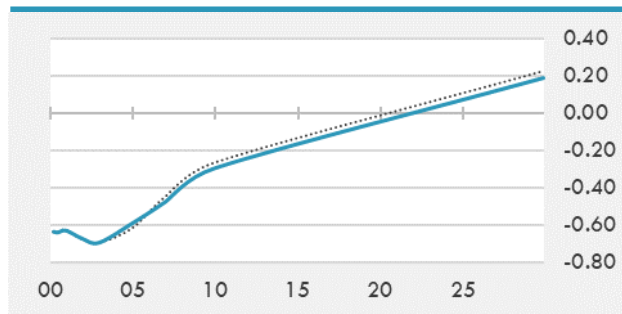
EUR/USD 30 DAYS SUPPORT & RESISTANCE

GBP/USD 30 DAYS SUPPORT & RESISTANCE

USD/JPY 30 DAYS SUPPORT & RESISTANCE

USD/CAD 30 DAYS SUPPORT & RESISTANCE


GLOBAL BOND INDICES

	Yield	ΔYield (in Bps)
Benchmark Indices		
US 10 Years Benchmark	1.3163	-0.032
EU 10 Years Benchmark	-0.298	-0.030
UK 10 Years Benchmark	0.6	-0.034
Sovereign Bonds		
US Treasury Bond	0.594	0
Eurozone Sovereign Bond	-0.428	0
Japan Sovereign Bond	-0.104	0
Corporate Bonds		
US Corporate TR	1.971	-0.018
US High Yield Bond TR	3.595	0.066
EUR Aggregate Corporate TR	0.279	-0.016
EUR High Yield TR	2.989	-0.014
USD Emerging Market IG & HY	3.823	-0.002

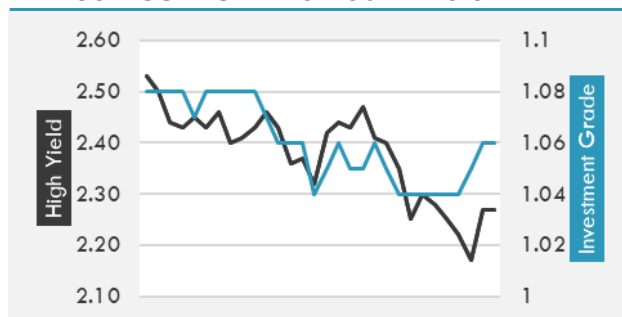
US TREASURIES YIELD CURVE

EUR GENERIC YIELD CURVE


- Treasury futures firm in Asia after 10-year yields dropped for a seventh straight session on Wednesday.
- Aussie bonds extended opening gains. N.Z. bonds rallied after very strong bidding at auction. Futures-led rally in JGBs gradually eased through the day.
- Germany sold 3.949 billion euros (\$4.7 billion) of bonds due Oct 9, 2026. Investors offered to buy 1.09 times the amount of securities sold. The 0 percent bonds were sold at a price of 103.15, have a yield of -0.59 percent and will settle on Jul 9.

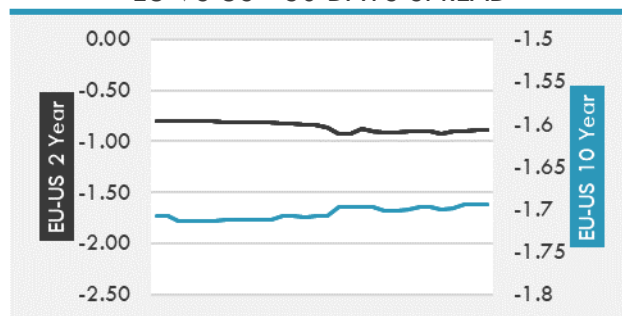
Source: Bloomberg, Financial Times, Economic times, Reuters

OVERNIGHT RATES - SWAPS

	Yield	ΔYield (in Bps)
3M USD LIBOR	0.135	0.000
3M EUR EURIBOR	-0.539	0.000
3M GBP LIBOR	0.078	0.000
3Y USD SWAP	0.516	-0.008
5Y USD SWAP	0.859	-0.014
10Y USD SWAP	1.303	-0.023
30Y USD SWAP	1.640	-0.019

USD CORPORATES - 30 DAYS SPREAD

FIXED INCOME SPREADS

	Spread	ΔSpread (in Bps)
USD 3M vs 10Y Spread	1.266	-0.032
USD 2Y vs 10Y Spread	1.100	-0.028
USD IG Spread	1.060	0.010
USD HY Spread	2.270	0.100
EU vs US 10Y Spread	-1.614	0.002
EU vs US 2Y Spread	-0.890	0.006
EM vs Benchmark Spread	265.300	1.000

EU VS US - 30 DAYS SPREAD


GLOBAL COMMODITIES MARKET

	Last Price	Daily %
Commodity Index	92.36	-0.12%

Energy

WTI Crude Future	71.99	-0.29%
Brent Crude Future	73.47	0.05%
NYMEX Gasoline	221.41	0.37%
NYMEX Heat Oil	208.93	0.01%
ICE Gasoil	589.75	0.73%
NYMEX Natural Gas	3.589	-0.19%

Precious Metals

Gold Spot \$/Oz	1797.22	-0.36%
Silver Spot \$/Oz	25.9219	-0.84%
Platinum Spot \$/Oz	1078.05	-0.99%
Palladium Spot \$/Oz	2835.46	-0.65%
Gold Future	1797	-0.28%
Silver Future	25.985	-0.55%
Platinum Future	1071.5	-0.96%
Palladium Future	2842.5	-0.20%

Base Metals

LME Aluminum	2500	0.00%
LME Copper	9455	0.00%
LME Zinc	2959	0.00%
LME Nickel	18310	0.00%
LME Lead	2290	0.00%
LME Tin	31690	0.00%

Agricultural

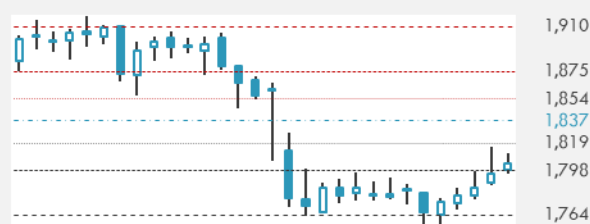
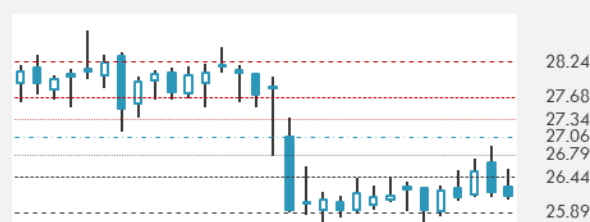
Corn CBT	535	0.75%
Wheat CBT	623.75	0.24%
Soybeans CBT	1329.5	0.17%
Bean Meal CBT	364.2	-0.19%
Rough Rice CBT	12.875	-0.12%
MDE Palm Oil	3791	-0.11%
Soybean CBT	59.82	0.22%
Coffee ICE	149.95	0.00%
Sugar #11 ICE	17.75	0.00%
Cotton #2 ICE	87.3	-0.38%
Cocoa ICE	2296	0.00%
Ethanol CME	2.35	0.00%
Lumber CME	816.6	0.00%
Orange Juice ICE	125.75	0.00%
Live Cattle CME	120.6	0.00%
Feeder Cattle CME	159	0.00%
Lean Hogs CME	100.4	0.00%

COMMODITY INDEX SUPPORT & RESISTANCE

WTI OIL 30 DAYS SUPPORT & RESISTANCE


- Oil was steady near \$72 a barrel as concern over the delta coronavirus variant rose, and traders waited for fresh signals from Saudi Arabia and the United Arab Emirates in their dispute over output policy.
- Gold trimmed gains made during a six-day winning streak as investors mulled Federal Reserve minutes.

Source: Bloomberg, Reuters

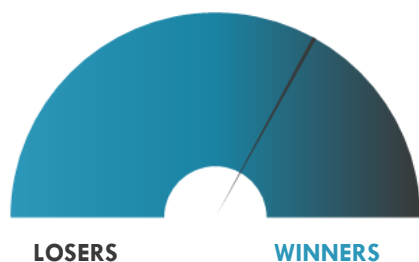
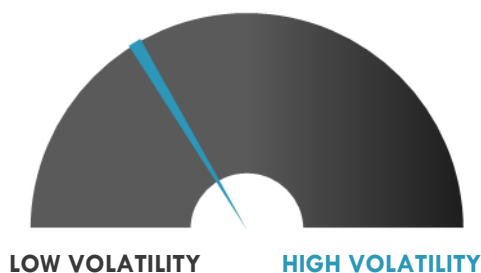
GOLD 30 DAYS SUPPORT & RESISTANCE

SILVER 30 DAYS SUPPORT & RESISTANCE


TOP 10 WINNERS

	Ticker	Last Price	Daily %
S&P 500 Stocks			
Oracle Corp	ORCL	86.09	+3.62%
Nucor Corp	NUE	95.69	+3.39%
CarMax Inc	KMX	136.88	+3.12%
Biogen Inc	BIIB	355.33	+3.03%
Rockwell Automation Inc	ROK	291.96	+2.80%
Pentair PLC	PNR	69.3	+2.74%
WW Grainger Inc	GWW	459	+2.60%
Leidos Holdings Inc	LDOS	103.99	+2.56%
Weyerhaeuser Co	WY	34.84	+2.56%
Seagate Technology	STX	87.82	+2.56%

TOP 10 LOSERS

	Ticker	Last Price	Daily %
S&P 500 Stocks			
Xilinx Inc	XLNX	137.44	-4.67%
MarketAxess Holdings	MKTX	450.08	-4.60%
Penn National Gaming	PENN	71.19	-4.31%
Advanced Micro Dev.	AMD	90.54	-4.16%
Carnival Corp	CCL	24.08	-3.76%
Enphase Energy Inc	ENPH	181.83	-3.70%
Norwegian Cruise Line	NCLH	27.05	-3.60%
Micron Technology Inc	MU	78.22	-3.53%
Diamondback Energy	FANG	87.99	-3.49%
Wynn Resorts Ltd	WYNN	112.91	-3.41%

S&P 500 DISTRIBUTION

S&P VOLATILITY INDEX


- Vista Gold -3.3% post-market on news that underwriters agreed to purchase more than 7.27M units in a public offering on a firm commitment basis.
- Saratoga Investment stock gains 2.9% in after-hours trading after its fiscal Q1 earnings beat consensus and net asset value rises during the quarter ended May 31, 2021.
- Stealth BioTherapeutics has joined the Rare Disease Company Coalition, an alliance of life science companies committed to discovering, developing, and delivering rare disease treatments. Shares up nearly 2% post market.
- GAN jumps 18% in post-market trading after releasing preliminary results for its Q2 2021. Revenue is expected to range between \$34-\$35M, beating the consensus of \$23.98M.
- Quidel shares are down 4.8% to \$120.75 in after-hours trading as the company is recalling certain lots of the Lyra SARS-CoV-2 Assay (M120), a test used to detect SARS-CoV-2, because of a significant risk of false negative results.
- Allegheny Tech (+4.3%) rallied as Bank of America upgraded shares to Neutral from Underperform with a \$22 price target, raised from \$15, following news of a tentative deal to resolve a four-month strike at its rolling operations.
- Phenom Resources (+13.5%) announced that the company's US trading symbol on the OTCQX Best Market in the US will change to "PHNMF" to align with the Company's name change on July 6, 2021.
- MoneyGram International (-3.3%) expects Q2 revenue to be ~\$330M vs. consensus of \$320.04M, reflecting continuing growth in money transfer business.

KEY ECONOMIC INDICATORS

Country	Event	Surv (M)	Actual	Prior	Time
Estonia	Industrial Production YoY	--	15.90%	16.90%	8:00
Finland	Trade Balance	--	--	-2.50E+08	9:00
Ireland	CPI EU Harmonized YoY	--	--	1.90%	13:00
Ireland	CPI YoY	--	--	1.70%	13:00
Ireland	CPI EU Harmonized MoM	--	--	0.20%	13:00
Ireland	CPI MoM	--	--	0.10%	13:00
Japan	BoP Current Account Balance	1.81E+12	1.98E+12	1.32E+12	2:50
Japan	Eco Watchers Survey Current SA	41.8	47.6	38.1	8:00
Japan	Eco Watchers Survey Outlook SA	49.5	52.4	47.6	8:00
Japan	Trade Balance BoP Basis	2.42E+11	2.00E+09	2.90E+11	2:50
Japan	Japan Buying Foreign Bonds	--	-1.91E+11	-1.03E+12	2:50
Latvia	Unemployment Rate	--	--	7.60%	
Latvia	CPI YoY	--	--	2.60%	13:00
Latvia	CPI MoM	--	--	0.50%	13:00
Netherlands	CPI YoY	--	2.00%	2.10%	7:30
Netherlands	CPI MoM	--	0.20%	0.10%	7:30
United Kingdom	RICS House Price Balance	79%	83%	83%	2:01
United States	Initial Jobless Claims	350000	--	364000	15:30
United States	Continuing Claims	3.35E+06	--	3.47E+06	15:30
United States	Langer Consumer Comfort	--	--	55.1	16:45

Source: Bloomberg

Banque BEMO sal

Head Office - Private and Corporate Banking

Elias Sarkis Ave., Bemo Bldg , Ashrafieh - Lebanon
Tel: +961 1 200 505 Fax: +961 1 217 860

Research & Development research@bemobank.com

Elias Sarkis Ave., Bemo Bldg , Ashrafieh - Lebanon
Tel: +961 1 200 505 Fax: +961 1 217 860

Disclaimer:

This report is published for information purposes only. The information herein has been compiled from, or based upon sources considered to be reliable (Bloomberg, SeekingAlpha, DailyStar...), but we do not guarantee or assume responsibility for its completeness and accuracy. This document should not be construed as a solicitation to take part in any investment, or as constituting any representation or warranty on our part. This report is not to be relied upon in substitution for the exercise of specialists.

We may not have taken any steps to ensure that the securities referred to in this report are suitable for any particular investor. The investments and services contained or referred to herein are not purported to be exhaustive, any person considering an investment should seek specialist advice on the suitability of an investment.

Nothing in this report constitutes investment, legal, accounting or tax advice, or a representation that any investment or strategy is suitable or appropriate to your individual circumstances, or otherwise constitutes a personal recommendation. Clients understand that it is their responsibility to seek legal and/or tax advice regarding the legal and tax consequences of their investment transactions. The consequences of any action taken on the basis of information contained herein are solely the responsibility of the recipient.

Investment instruments are subject to risk, including possible loss of principal amount invested. Past performance should not be taken as an indication or guarantee of future performance, and no representation or warranty, express or implied, is made regarding future performance. The value of securities and financial instruments is subject to exchange rate fluctuation that may have a positive or adverse effect on the price or income of such securities or financial instruments. Some investments mentioned in this report may have a high level of volatility. High volatility investments may experience sudden and large falls in their value causing losses when that investment is realized. Some investments may not be readily realizable and it may be difficult to sell or realize those investments, similarly it may prove difficult to obtain reliable information about the value, or risks, to which such an investment is exposed.

This report may provide the addresses of websites or references. We have not reviewed any such site and takes no responsibility for the content contained therein. Such address or reference is provided solely for convenience and information. Accessing such website through this report shall be at the recipients own risk.