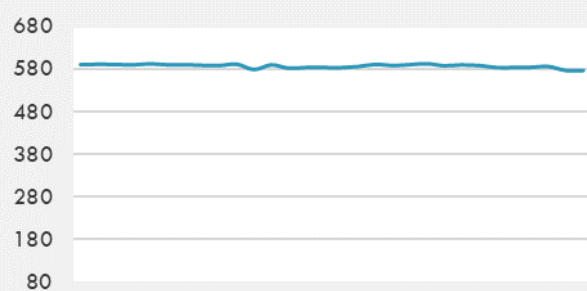
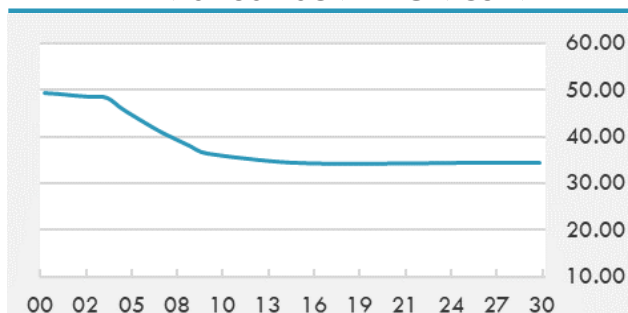


BEIRUT STOCK EXCHANGE

	Last	Daily %	YTD %	Dividend %
MSCI Lebanon	577.26	-1.49%	31.87%	
Development and Reconstruction				
Solidere A	24.32	-1.50%	31.46%	
Solidere B	24.35	-1.46%	33.13%	
Banking				
Audi Listed	2.1	0.00%	72.13%	
BLC Listed	0.93	0.00%	0.00%	
BOB Listed	17.8	0.00%	0.00%	
Byblos Listed	0.95	0.00%	79.25%	
BEMO Listed	1.2	0.00%	0.00%	
BLOM Listed	3.33	-10.00%	60.87%	
Trading				
RYMCO	3.19	0.00%	0.00%	
Industrial				
Holcim	19.7	14.53%	35.86%	
Ciments Blancs	4.5	0.00%	9.76%	

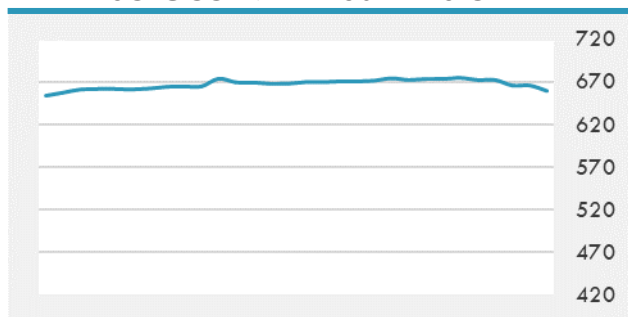
MSCI LEBANON INDEX - 30 DAYS CHART

LEBANESE USD SOVEREIGN CURVE


- The price of bread has risen again in bakeries and stores in Lebanon as a result of rising production costs and the free-falling pound, the Economy Ministry said Saturday. The change in price marks the seventh time this year that citizens will grapple with an increase in the cost of bread, which will likely create a ripple effect across prices at restaurants, cafes and other food outlets.

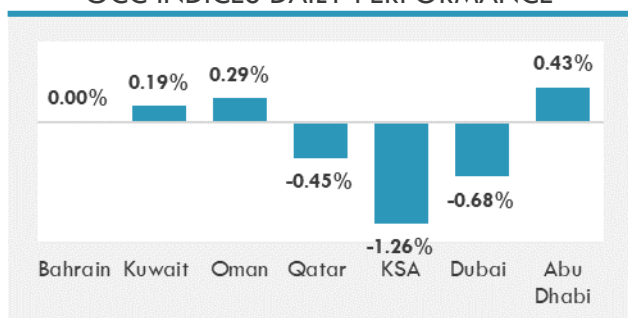
Source: Daily Star, Gulf Business, Mubasher, Bloomberg, Businessnews LB

GCC EQUITY INDICES

	Last Price	Daily %	YTD %
Bahrain	1575.02	0.00%	5.72%
Kuwait	6367.32	0.19%	15.03%
Oman	4132.33	0.29%	12.94%
Qatar	10794.33	-0.45%	3.43%
KSA	10688.34	-1.26%	23.00%
Dubai	2760.73	-0.68%	10.79%
Abu Dhabi	6993.27	0.43%	38.61%

MSCI GCC INDEX - 30 DAYS CHART

LOCAL/GCC FOREIGN EXCHANGE

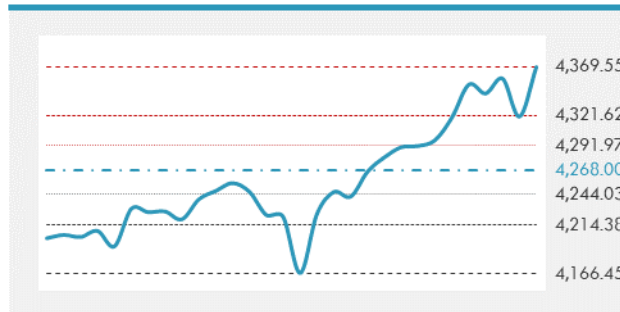
	Cross	Last Price
Lebanese Pound Spot	USD/LBP	1515.5
Bahraini Dinar Spot	USD/BHD	0.37701
Kuwaiti Dinar Spot	USD/KWD	0.3006
Omani Rial Spot	USD/OMR	0.38501
Qatari Riyal Spot	USD/QAR	3.6416
Saudi Riyal Spot	USD/SAR	3.7508
UAE Dirham Spot	USD/AED	3.673

GCC INDICES DAILY PERFORMANCE


UNITED STATES EQUITY MARKET INDICES

	Last Price	Daily %	YTD %	Δ10D Vol
Major Indices				
Dow Jones	34870.16	0.00%	13.93%	1.80%
S&P 500	4369.55	0.00%	16.33%	1.67%
Nasdaq	14701.92	0.00%	14.07%	0.98%
Sectors Indices				
Discretionary	1474.52	0.00%	13.20%	0.48%
Staples	724.85	0.00%	4.10%	-0.53%
Energy	399.42	0.00%	39.59%	2.93%
Financials	610.19	0.00%	24.42%	5.70%
Healthcare	1501.46	0.00%	13.40%	-0.06%
Industrials	875.18	0.00%	16.76%	2.68%
IT	2656.39	0.00%	15.93%	0.02%
Materials	521.27	0.00%	14.39%	4.21%
Com. Services	267.97	0.00%	20.75%	0.69%
Utilities	328.55	0.00%	2.97%	-1.16%
Real Estate	287.11	0.00%	25.98%	1.78%

S&P 500 INDEX - 30 DAYS CHART

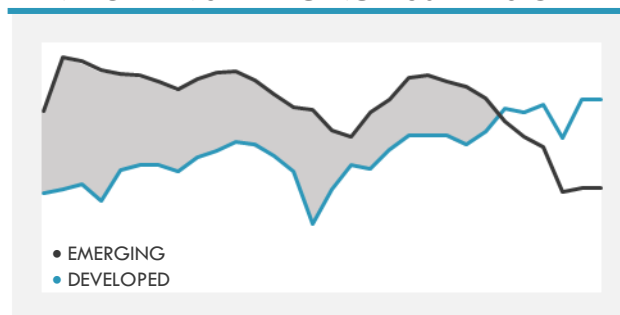
S&P 500 SUPPORT & RESISTANCE


- The S&P 500 Index closed at a fresh record, capping its third week of gains after investors regained some confidence in the global growth outlook on Friday.
- European stocks advanced, rebounding from their biggest drop in almost two months, as investors returned to sectors that are more sensitive to the economic revival.
- Asian equities rose, led by gains in China and Japan, after U.S. stocks rallied to all-time highs and the Chinese central bank said it will cut the amount of cash most lenders must hold in reserve.

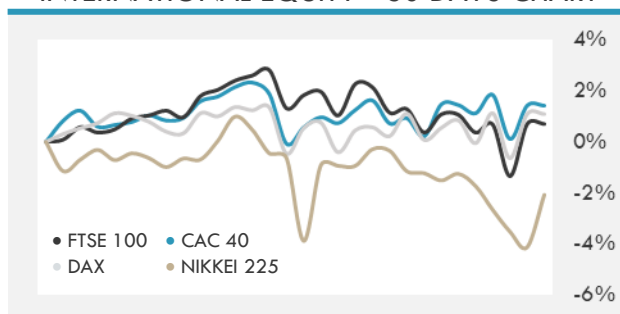
Source: Bloomberg, Financial Times, Reuters

INTERNATIONAL MARKETS INDICES

	Last Price	Daily %	YTD %	Δ10D Vol
World	1767.4	0.00%	11.96%	1.85%
Developed	3053.12	0.00%	13.50%	1.93%
Emerging	1318.17	0.00%	2.08%	0.11%
Frontier	2535.8	0.00%	-2.16%	-0.01%
Europe	151.56	0.00%	14.73%	1.82%
Latin America	2511.68	0.00%	2.44%	1.70%
Asia Pacific	201.97	0.00%	1.03%	-0.67%

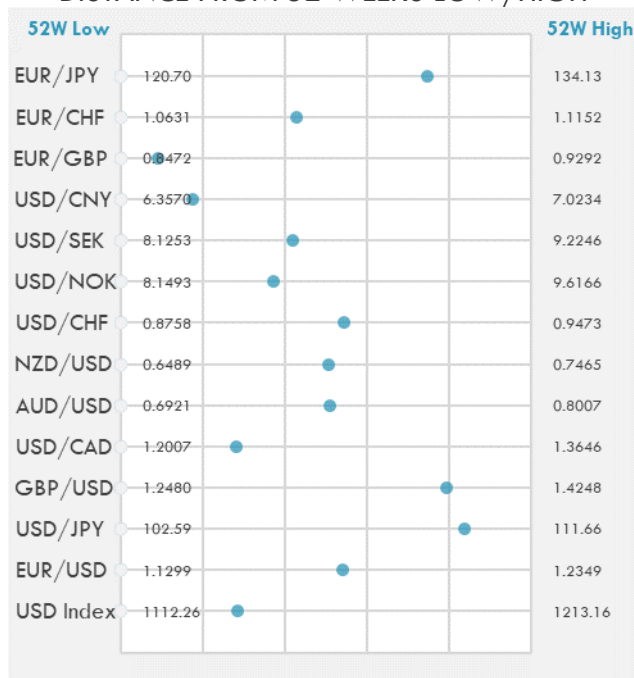
DEVELOPED VS EMERGING - 30 DAYS CHART

INTERNATIONAL EQUITY INDICES

	Last Price	Daily %	YTD %	Δ10D Vol
EuroStoxx 50	4068.09	0.00%	14.51%	4.01%
FTSE 100	7121.88	0.00%	10.24%	1.10%
CAC 40	6529.42	0.00%	17.62%	4.55%
DAX	15687.93	0.00%	14.35%	2.80%
Swiss SMI	11989.81	0.00%	12.02%	0.50%
Nikkei 225	28542.02	2.15%	4.00%	-0.13%
CSI 300	5117.56	0.95%	-1.80%	-0.29%

INTERNATIONAL EQUITY - 30 DAYS CHART


FOREIGN EXCHANGE MARKET

	Last Price	Daily %	Δ10D	Vol 25	ΔRR
Major USD Cross Rate					
USD Index	1140.89	0.12%	-0.04%	-	
EUR/USD	1.1867	-0.08%	-0.13%	0.120	
USD/JPY	110.18	0.04%	0.00%	-0.305	
GBP/USD	1.3886	-0.11%	-0.29%	-0.428	
USD/CAD	1.2469	0.18%	-0.32%	0.628	
AUD/USD	0.7473	-0.20%	-0.74%	-0.713	
NZD/USD	0.6983	-0.24%	-0.54%	-0.673	
USD/CHF	0.9146	-0.01%	-0.11%	-0.083	
USD/NOK	8.6979	0.33%	-0.05%	0.873	
USD/SEK	8.5876	0.19%	0.01%	0.365	
USD/CNY	6.4736	-0.08%	0.03%	0.600	
Major EUR Cross Rate					
EUR/GBP	0.85466	0.02%	-0.04%	0.180	
EUR/CHF	1.08541	-0.02%	0.02%	0.045	
EUR/JPY	130.75	-0.04%	-0.20%	-0.485	

DISTANCE FROM 52 WEEKS LOW/HIGH


- A gauge of the dollar strength gained as investors await U.S. inflation data and Federal Reserve Chair Jerome Powell's testimony this week for clues on when the central bank will start tapering its asset purchases.
- The yen holds steady ahead of major market events this week that include the release of a U.S. inflation report, Fed Chair Jerome Powell's testimony and the Bank of Japan's policy decision.
- Australia's dollar slides after a spike in new coronavirus cases in Sydney prompted leveraged funds to reload Aussie shorts.

Source: Bloomberg, Financial Times, Reuters

EUR/USD 30 DAYS SUPPORT & RESISTANCE

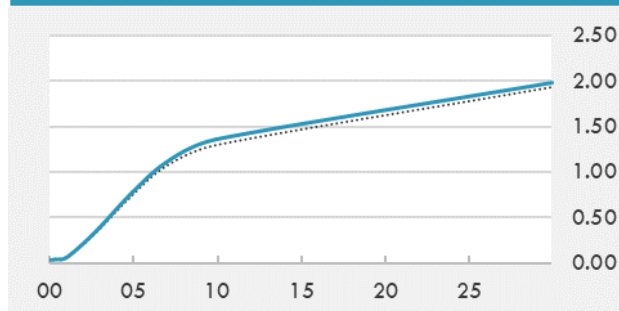
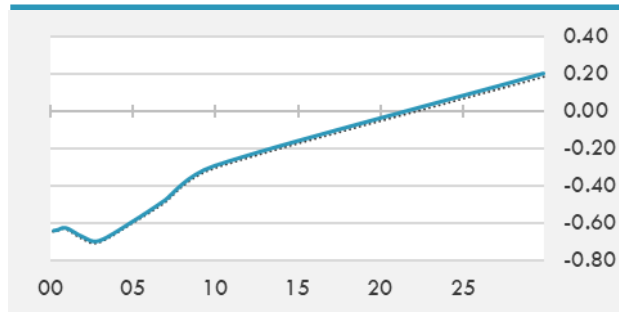
GBP/USD 30 DAYS SUPPORT & RESISTANCE

USD/JPY 30 DAYS SUPPORT & RESISTANCE

USD/CAD 30 DAYS SUPPORT & RESISTANCE


GLOBAL BOND INDICES

	Yield	ΔYield (in Bps)
Benchmark Indices		
US 10 Years Benchmark	1.3595	0.067
EU 10 Years Benchmark	-0.293	0.014
UK 10 Years Benchmark	0.655	0.043
Sovereign Bonds		
US Treasury Bond	0.594	0
Eurozone Sovereign Bond	-0.428	0
Japan Sovereign Bond	-0.104	0
Corporate Bonds		
US Corporate TR	2.008	0.044
US High Yield Bond TR	3.656	-0.011
EUR Aggregate Corporate TR	0.287	0.016
EUR High Yield TR	3.006	0.008
USD Emerging Market IG & HY	3.831	0.013

US TREASURIES YIELD CURVE

EUR GENERIC YIELD CURVE


- Treasury futures hold steady before the release of U.S. inflation data on Tuesday and Fed Chair Jerome Powell's testimony on Wednesday and Thursday. Japanese government bond futures fell on Monday.
- German government bonds, one of the world's most liquid safe haven assets, headed on Friday for their biggest two-week fall in yields since June 2020 as investors saw a longer road to recovery from the COVID-19 crisis than expected.

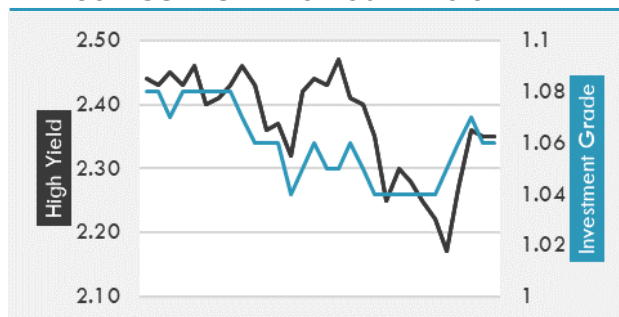
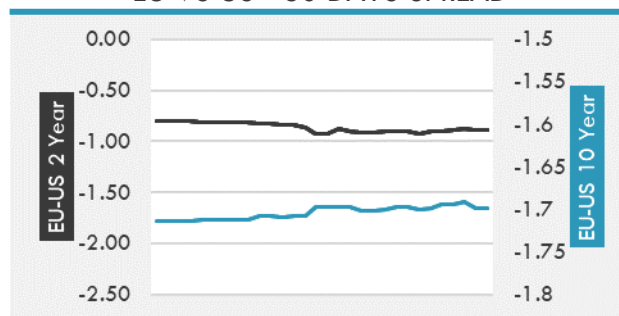
Source: Bloomberg, Financial Times, Economic times, Reuters

OVERNIGHT RATES - SWAPS

	Yield	ΔYield (in Bps)
3M USD LIBOR	0.129	0.010
3M EUR EURIBOR	-0.543	0.003
3M GBP LIBOR	0.077	0.000
3Y USD SWAP	0.523	0.040
5Y USD SWAP	0.877	0.053
10Y USD SWAP	1.364	0.081
30Y USD SWAP	1.719	0.077

FIXED INCOME SPREADS

	Spread	ΔSpread (in Bps)
USD 3M vs 10Y Spread	1.311	0.069
USD 2Y vs 10Y Spread	1.143	0.046
USD IG Spread	1.060	-0.010
USD HY Spread	2.350	-0.010
EU vs US 10Y Spread	-1.652	-0.053
EU vs US 2Y Spread	-0.888	-0.011
EM vs Benchmark Spread	267.200	0.000

USD CORPORATES - 30 DAYS SPREAD

EU VS US - 30 DAYS SPREAD


GLOBAL COMMODITIES MARKET

	Last Price	Daily %
Commodity Index	93.22	-0.30%

Energy

WTI Crude Future	74.38	-0.24%
Brent Crude Future	75.17	-0.50%
NYMEX Gasoline	227.9	-0.57%
NYMEX Heat Oil	214.2	-0.61%
ICE Gasoil	605.25	-0.78%
NYMEX Natural Gas	3.649	-0.68%

Precious Metals

Gold Spot \$/Oz	1801.66	-0.37%
Silver Spot \$/Oz	26.0104	-0.36%
Platinum Spot \$/Oz	1096.69	-0.72%
Palladium Spot \$/Oz	2812.53	0.01%
Gold Future	1801.7	-0.49%
Silver Future	26.085	-0.57%
Platinum Future	1090.2	-0.50%
Palladium Future	2811.5	-0.02%

Base Metals

LME Aluminum	2502	0.00%
LME Copper	9520	0.00%
LME Zinc	2977	0.00%
LME Nickel	18747	0.00%
LME Lead	2331	0.00%
LME Tin	31680	0.00%

Agricultural

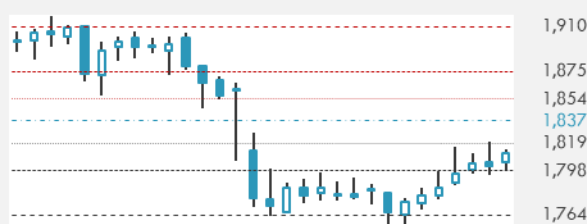
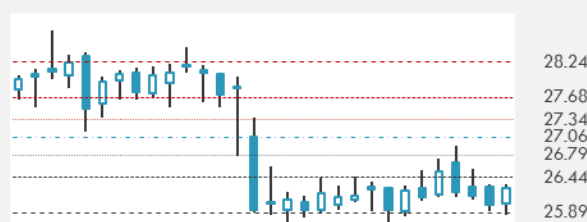
Corn CBT	519	0.39%
Wheat CBT	614.25	-0.12%
Soybeans CBT	1331	0.13%
Bean Meal CBT	356.8	-0.59%
Rough Rice CBT	12.87	0.04%
MDE Palm Oil	3894	0.05%
Soybean CBT	61.62	1.12%
Coffee ICE	151.5	0.00%
Sugar #11 ICE	17.28	0.00%
Cotton #2 ICE	87.31	-0.46%
Cocoa ICE	2347	0.00%
Ethanol CME	2.32	0.00%
Lumber CME	754.9	0.00%
Orange Juice ICE	127.35	0.00%
Live Cattle CME	119.225	0.00%
Feeder Cattle CME	159.175	0.00%
Lean Hogs CME	85.425	0.00%

COMMODITY INDEX SUPPORT & RESISTANCE

WTI OIL 30 DAYS SUPPORT & RESISTANCE


- The Biden administration is preparing to release a blueprint for limiting sales of U.S. drilling rights that falls short of the outright ban sought by some environmentalists, as rising oil and gasoline prices highlight the risks of curtailing domestic crude production.
- Gold holds gain as bond yields waver.

Source: Bloomberg, Reuters

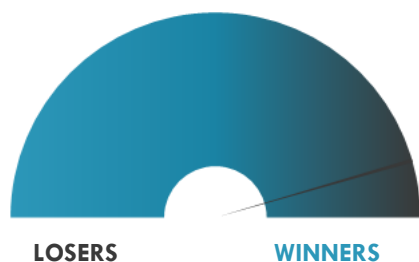
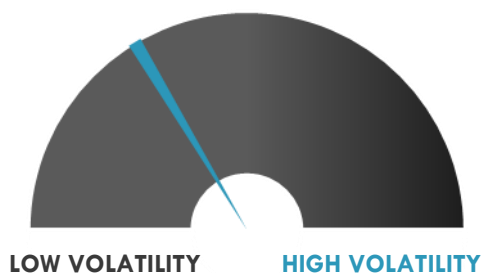
GOLD 30 DAYS SUPPORT & RESISTANCE

SILVER 30 DAYS SUPPORT & RESISTANCE


TOP 10 WINNERS

	Ticker	Last Price	Daily %
S&P 500 Stocks			
Discover Financial Serv.	DFS	122.4	+6.19%
NOV Inc	NOV	15.03	+5.99%
State Street Corp	STT	84.11	+5.68%
SVB Financial Group	SIVB	575.24	+5.57%
Capital One Financial	COF	160.55	+5.31%
Freeport-McMoRan Inc	FCX	36.5	+5.22%
PVH Corp	PVH	108.05	+4.94%
Zions Bancorp NA	ZION	52.29	+4.92%
General Motors Co	GM	58.76	+4.82%
Regions Financial Corp	RF	19.87	+4.74%

TOP 10 LOSERS

	Ticker	Last Price	Daily %
S&P 500 Stocks			
Biogen Inc	BIB	358.16	-2.95%
Dexcom Inc	DXCM	440.73	-1.40%
ResMed Inc	RMD	247.68	-1.22%
Baxter International Inc	BAX	80.43	-1.11%
Equinix Inc	EQIX	820.32	-0.95%
Charter Com.	CHTR	736.47	-0.95%
Eli Lilly & Co	LLY	234.99	-0.90%
Hologic Inc	HOLX	69.31	-0.77%
Hormel Foods Corp	HRL	47.44	-0.65%
Edwards Lifesciences	EW	107.51	-0.63%

S&P 500 DISTRIBUTION

S&P VOLATILITY INDEX


- Energen announces that president and chief executive officer, Stephen Rizzone, has retired from the company following a leave of absence due to health reasons earlier this year. Shares went down nearly 1% post market.
- Liminal BioSciences has closed on the previously announced divestment of its plasma-derived therapeutics manufacturing subsidiary to Kedrion. The company received a consideration of \$5M upon deal closure. Shares went up more than 6% post market.
- NOV Inc. (+5.9%) was one of Friday's biggest gainers after Morgan Stanley upgraded shares to Equal Weight from Underweight with an \$18 price target, part of the firm's positive overall take on oilfield equipment suppliers heading into earnings season.
- Meta Materials (-16.8%), nee Torchlight Energy, was one of the biggest losers on Friday and the week, with shares shedding a third of their value since July 2.
- The micro-cap oncology company Tempest Therapeutics (+90.0%) has nearly doubled in value to reach its highest level since the company closed its merger agreement with Millendo Therapeutics late last month.
- Vistra Energy (+3.0%) was upgraded to Buy from Neutral with a \$23 price target, raised from \$17, at Bank of America, which sees the company as one of the largest beneficiaries of the recent strength in power and gas prices.
- A short while ago, Stat News reported that the acting FDA commissioner, Janet Woodcock, has called for a federal investigation into the interactions between Biogen (-2.9%) and the regulator's staff in the run-up to FDA approval for the company's Alzheimer's drug Aduhelm.

KEY ECONOMIC INDICATORS

Country	Event	Surv (M)	Actual	Prior	Time
Canada	Bloomberg Nanos Confidence	--	--	66.4	15:00
Estonia	Unemployment Rate	--	--	8.00%	
Germany	Wholesale Price Index YoY	--	--	9.70%	9:00
Germany	Wholesale Price Index MoM	--	--	1.70%	9:00
Ireland	Ulster Bank Ireland Construction PMI	--	65	66.4	3:01
Japan	Core Machine Orders MoM	2.40%	7.80%	0.60%	2:50
Japan	PPI YoY	4.80%	5.00%	4.90%	2:50
Japan	Machine Tool Orders YoY	--	--	141.90%	9:00
Japan	Core Machine Orders YoY	6.30%	12.20%	6.50%	2:50
Japan	PPI MoM	0.50%	0.60%	0.70%	2:50
Latvia	Trade Balance	--	--	-2.17E+08	13:00
Lithuania	PPI YoY	--	--	11.90%	9:00
Lithuania	PPI MoM	--	--	1.10%	9:00
Portugal	CPI EU Harmonized YoY	--	--	-0.60%	13:00
Portugal	CPI EU Harmonized MoM	--	--	0.20%	13:00
Portugal	CPI YoY	--	--	0.50%	13:00
Portugal	CPI MoM	--	--	0.10%	13:00
Slovakia	Average Real Monthly Wage YoY	--	--	14.80%	10:00
Slovakia	Industrial Sales YoY	--	--	77.60%	10:00
Slovakia	Current Account Balance	--	--	-7.70E+07	

Source: Bloomberg

Banque BEMO sal

Head Office - Private and Corporate Banking

Elias Sarkis Ave., Bemo Bldg , Ashrafieh - Lebanon
Tel: +961 1 200 505 Fax: +961 1 217 860

Research & Development research@bemobank.com

Elias Sarkis Ave., Bemo Bldg , Ashrafieh - Lebanon
Tel: +961 1 200 505 Fax: +961 1 217 860

Disclaimer:

This report is published for information purposes only. The information herein has been compiled from, or based upon sources considered to be reliable (Bloomberg, SeekingAlpha, DailyStar...), but we do not guarantee or assume responsibility for its completeness and accuracy. This document should not be construed as a solicitation to take part in any investment, or as constituting any representation or warranty on our part. This report is not to be relied upon in substitution for the exercise of specialists.

We may not have taken any steps to ensure that the securities referred to in this report are suitable for any particular investor. The investments and services contained or referred to herein are not purported to be exhaustive, any person considering an investment should seek specialist advice on the suitability of an investment.

Nothing in this report constitutes investment, legal, accounting or tax advice, or a representation that any investment or strategy is suitable or appropriate to your individual circumstances, or otherwise constitutes a personal recommendation. Clients understand that it is their responsibility to seek legal and/or tax advice regarding the legal and tax consequences of their investment transactions. The consequences of any action taken on the basis of information contained herein are solely the responsibility of the recipient.

Investment instruments are subject to risk, including possible loss of principal amount invested. Past performance should not be taken as an indication or guarantee of future performance, and no representation or warranty, express or implied, is made regarding future performance. The value of securities and financial instruments is subject to exchange rate fluctuation that may have a positive or adverse effect on the price or income of such securities or financial instruments. Some investments mentioned in this report may have a high level of volatility. High volatility investments may experience sudden and large falls in their value causing losses when that investment is realized. Some investments may not be readily realizable and it may be difficult to sell or realize those investments, similarly it may prove difficult to obtain reliable information about the value, or risks, to which such an investment is exposed.

This report may provide the addresses of websites or references. We have not reviewed any such site and takes no responsibility for the content contained therein. Such address or reference is provided solely for convenience and information. Accessing such website through this report shall be at the recipients own risk.