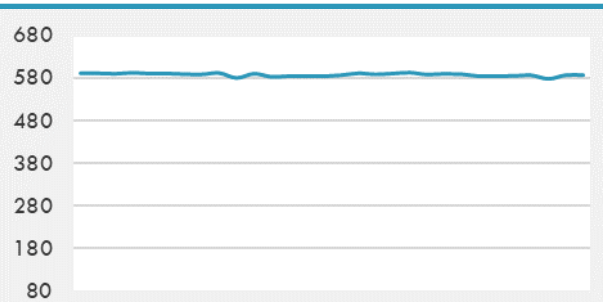
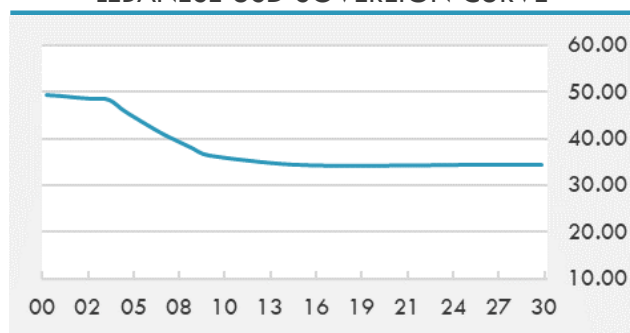


BEIRUT STOCK EXCHANGE

	Last	Daily %	YTD %	Dividend %
MSCI Lebanon	586.37	1.58%	33.95%	
Development and Reconstruction				
Solidere A	24.65	1.36%	33.24%	
Solidere B	24.9	2.26%	36.14%	
Banking				
Audi Listed	2.1	0.00%	72.13%	
BLC Listed	0.93	0.00%	0.00%	
BOB Listed	17.8	0.00%	0.00%	
Byblos Listed	0.95	0.00%	79.25%	
BEMO Listed	1.2	0.00%	0.00%	
BLOM Listed	3.33	0.00%	60.87%	
Trading				
RYMCO	3.19	0.00%	0.00%	
Industrial				
Holcim	19.7	0.00%	35.86%	
Ciments Blancs	4.5	0.00%	9.76%	

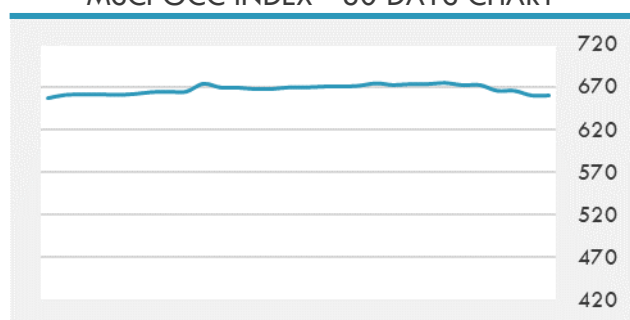
MSCI LEBANON INDEX - 30 DAYS CHART

LEBANESE USD SOVEREIGN CURVE


- The Tadawul All Share Index of the Saudi Exchange closed Monday higher by 0.10% or 10.2 points at 10,698.54 points.
- The UAE stock markets have ended Monday's trading session on a varied note. The benchmark index of the Dubai Financial Market went down 0.09% to close Monday's session at 2,758 points. As for the Abu Dhabi Securities Exchange, the main index inched up 0.42% to end the session at 7,022.67 points.

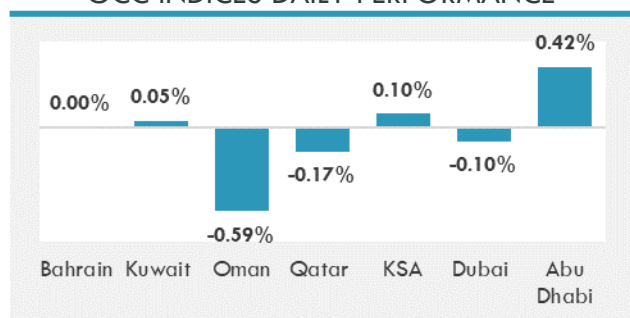
Source: Daily Star, Gulf Business, Mubasher, Bloomberg, Businessnews LB

GCC EQUITY INDICES

	Last Price	Daily %	YTD %
Bahrain	1575.02	0.00%	5.72%
Kuwait	6370.28	0.05%	14.86%
Oman	4108.13	-0.59%	12.28%
Qatar	10776.34	-0.17%	3.26%
KSA	10698.54	0.10%	23.12%
Dubai	2758	-0.10%	10.68%
Abu Dhabi	7022.68	0.42%	39.19%

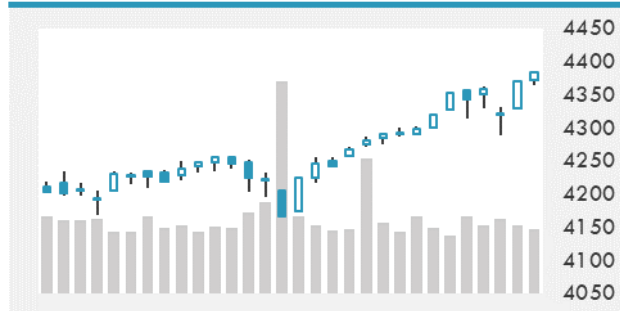
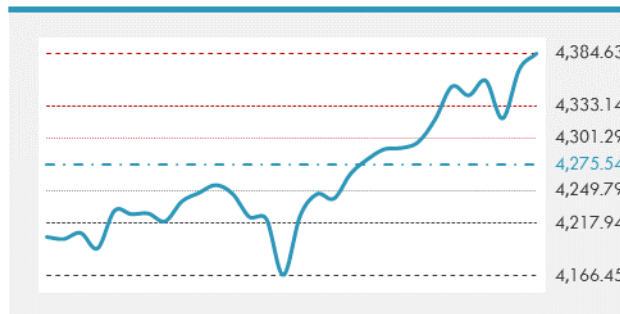
MSCI GCC INDEX - 30 DAYS CHART

LOCAL/GCC FOREIGN EXCHANGE

	Cross	Last Price
Lebanese Pound Spot	USD/LBP	1515.5
Bahraini Dinar Spot	USD/BHD	0.377
Kuwaiti Dinar Spot	USD/KWD	0.3006
Omani Rial Spot	USD/OMR	0.38501
Qatari Riyal Spot	USD/QAR	3.6417
Saudi Riyal Spot	USD/SAR	3.7508
UAE Dirham Spot	USD/AED	3.673

GCC INDICES DAILY PERFORMANCE


UNITED STATES EQUITY MARKET INDICES

	Last Price	Daily %	YTD %	Δ10D Vol
Major Indices				
Dow Jones	34996.18	0.00%	14.34%	-0.56%
S&P 500	4384.63	0.00%	16.73%	0.02%
Nasdaq	14733.24	0.00%	14.32%	-1.07%
Sectors Indices				
Discretionary	1483.20	0.00%	13.87%	0.03%
Staples	723.34	0.00%	3.88%	0.17%
Energy	398.98	0.00%	39.44%	-5.10%
Financials	616.06	0.00%	25.62%	0.15%
Healthcare	1504.15	0.00%	13.61%	0.00%
Industrials	876.1	0.00%	16.89%	-0.48%
IT	2657.52	0.00%	15.98%	-0.56%
Materials	522.63	0.00%	14.68%	-0.01%
Com. Services	270.38	0.00%	21.84%	0.14%
Utilities	329.47	0.00%	3.26%	-0.30%
Real Estate	289.56	0.00%	27.06%	0.33%

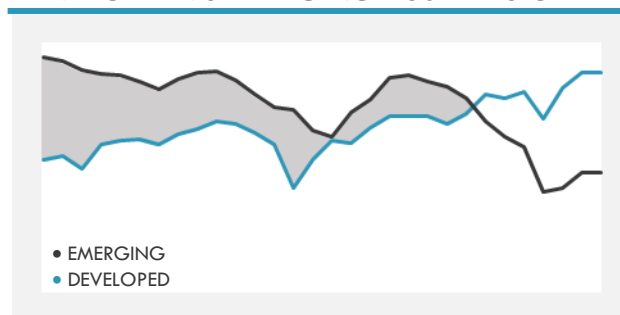
S&P 500 INDEX - 30 DAYS CHART

S&P 500 SUPPORT & RESISTANCE


- The S&P 500 Index closed at another record high as investors looked to a highly anticipated 2nd quarter earnings season, which kicks off with results from two of the nation's largest banks.
- European equities hit a record high on Monday with investors rotating out of cyclical sectors and into more defensive names as they assess risks to the recovery from the delta virus variant against the outlook for continued stimulus.
- Asian equities rose, bolstered by gains in Hong Kong-listed technology heavyweights following a selloff over Beijing's crackdown on the sector last week.

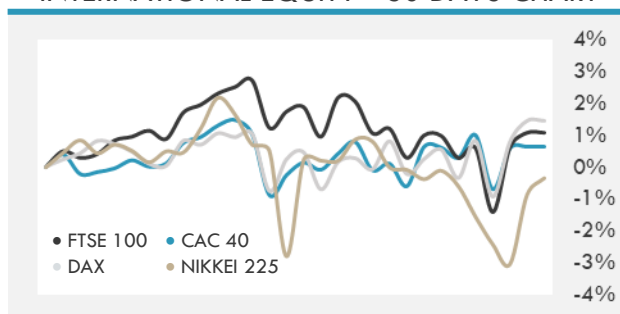
Source: Bloomberg, Financial Times, Reuters

INTERNATIONAL MARKETS INDICES

	Last Price	Daily %	YTD %	Δ10D Vol
World	1776.48	0.00%	12.54%	0.36%
Developed	3068.27	0.00%	14.06%	0.20%
Emerging	1326.83	0.00%	2.75%	1.90%
Frontier	2538.5	0.00%	-2.06%	0.11%
Europe	152.61	0.00%	15.53%	0.35%
Latin America	2556.68	0.00%	4.28%	3.99%
Asia Pacific	204.27	0.00%	2.18%	4.29%

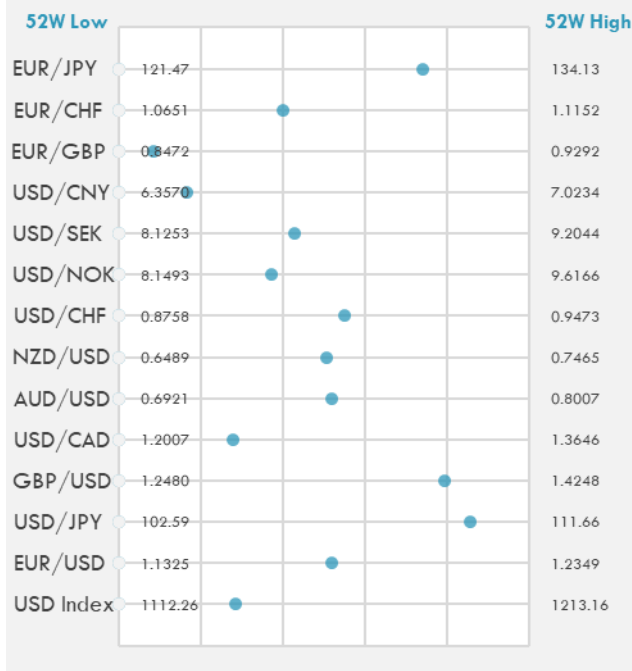
DEVELOPED VS EMERGING - 30 DAYS CHART

INTERNATIONAL EQUITY INDICES

	Last Price	Daily %	YTD %	Δ10D Vol
EuroStoxx 50	4093.38	0.00%	15.22%	0.19%
FTSE 100	7125.42	0.00%	10.29%	-0.02%
CAC 40	6559.25	0.00%	18.15%	0.18%
DAX	15790.51	0.00%	15.10%	-0.27%
Swiss SMI	12081.62	0.00%	12.88%	0.76%
Nikkei 225	28717.72	0.52%	4.64%	8.27%
CSI 300	5133.87	0.02%	-1.49%	1.17%

INTERNATIONAL EQUITY - 30 DAYS CHART


FOREIGN EXCHANGE MARKET

	Last Price	Daily %	Δ10D	Vol 25	ΔRR
Major USD Cross Rate					
USD Index	1140.89	-0.01%	-0.28%	-	
EUR/USD	1.1857	-0.03%	-0.36%	0.070	
USD/JPY	110.37	0.00%	-0.76%	-0.273	
GBP/USD	1.3882	-0.01%	0.00%	-0.368	
USD/CAD	1.2462	0.07%	-0.01%	0.705	
AUD/USD	0.7486	0.13%	0.01%	-0.705	
NZD/USD	0.6984	0.04%	-0.02%	-0.673	
USD/CHF	0.9151	0.00%	-0.62%	0.290	
USD/NOK	8.6960	0.17%	-0.15%	0.910	
USD/SEK	8.5879	-0.01%	-0.10%	0.338	
USD/CNY	6.4678	-0.13%	0.03%	0.600	
Major EUR Cross Rate					
EUR/GBP	0.85416	-0.01%	-0.17%	0.173	
EUR/CHF	1.08512	-0.02%	-0.11%	0.055	
EUR/JPY	130.87	-0.04%	-0.18%	-0.513	

DISTANCE FROM 52 WEEKS LOW/HIGH


- The dollar and franc outperformed most of their Group-of-10 currency peers amid lingering concerns about the impact of rising coronavirus cases on global economic growth. The Canadian dollar and Norwegian krone dropped with oil.
- China's onshore yuan rises to its highest level in a week after an unexpected surge in exports stoked optimism about the economic recovery.
- The New Zealand and Australian dollars advanced as gains in regional stocks boosted risk appetite.

Source: Bloomberg, Financial Times, Reuters

EUR/USD 30 DAYS SUPPORT & RESISTANCE

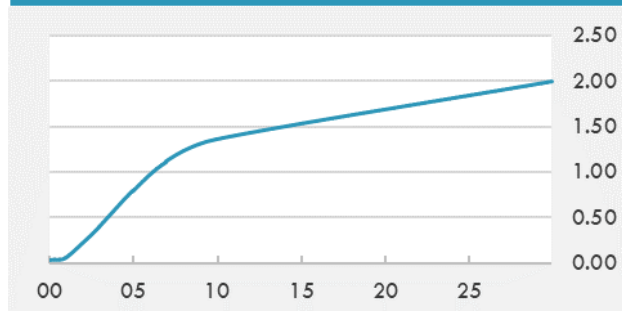
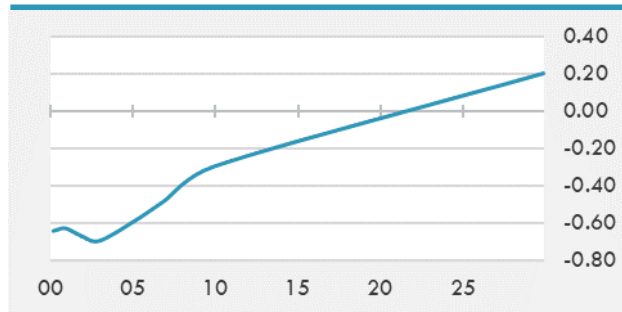
GBP/USD 30 DAYS SUPPORT & RESISTANCE

USD/JPY 30 DAYS SUPPORT & RESISTANCE

USD/CAD 30 DAYS SUPPORT & RESISTANCE


GLOBAL BOND INDICES

	Yield	ΔYield (in Bps)
Benchmark Indices		
US 10 Years Benchmark	1.3645	0.005
EU 10 Years Benchmark	-0.295	-0.002
UK 10 Years Benchmark	0.651	-0.004
Sovereign Bonds		
US Treasury Bond	0.594	0
Eurozone Sovereign Bond	-0.428	0
Japan Sovereign Bond	-0.104	0
Corporate Bonds		
US Corporate TR	2.011	0.003
US High Yield Bond TR	3.614	-0.042
EUR Aggregate Corporate TR	0.280	-0.007
EUR High Yield TR	3.035	0.029
USD Emerging Market IG & HY	3.845	0.014

US TREASURIES YIELD CURVE

EUR GENERIC YIELD CURVE


- Treasury futures open steady in Asia. Bond markets in the U.S. and Japan are set to face supply of ultra-long debt, while Australia sells inflation-linked notes.
- Maturities across the German sovereign yield curve were little changed in Monday afternoon trading.
- Demand for carry drove Italian bonds higher and tightened the BTP-bund spread by the most this month, after ECB President Lagarde told Bloomberg Television that traders should prepare for new guidance on monetary stimulus next week. Bunds and gilts pare gains.

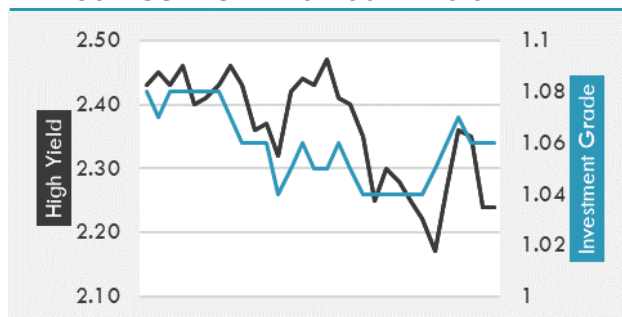
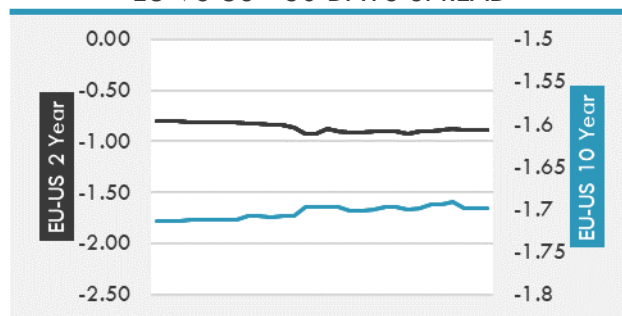
Source: Bloomberg, Financial Times, Economic times, Reuters

OVERNIGHT RATES - SWAPS

	Yield	ΔYield (in Bps)
3M USD LIBOR	0.129	0.000
3M EUR EURIBOR	-0.543	0.000
3M GBP LIBOR	0.077	0.000
3Y USD SWAP	0.522	-0.001
5Y USD SWAP	0.874	-0.003
10Y USD SWAP	1.361	-0.003
30Y USD SWAP	1.726	0.007

FIXED INCOME SPREADS

	Spread	ΔSpread (in Bps)
USD 3M vs 10Y Spread	1.314	0.002
USD 2Y vs 10Y Spread	1.136	-0.007
USD IG Spread	1.060	0.000
USD HY Spread	2.240	-0.110
EU vs US 10Y Spread	-1.652	0.000
EU vs US 2Y Spread	-0.888	0.000
EM vs Benchmark Spread	263.800	0.000

USD CORPORATES - 30 DAYS SPREAD

EU VS US - 30 DAYS SPREAD


GLOBAL COMMODITIES MARKET

	Last Price	Daily %
Commodity Index	94.01	0.05%

Energy

WTI Crude Future	74.25	0.20%
Brent Crude Future	75.31	0.20%
NYMEX Gasoline	228.22	0.22%
NYMEX Heat Oil	215.4	0.20%
ICE Gasoil	608.5	0.33%
NYMEX Natural Gas	3.743	-0.16%

Precious Metals

Gold Spot \$/Oz	1806.64	0.02%
Silver Spot \$/Oz	26.2043	0.01%
Platinum Spot \$/Oz	1121.02	-0.15%
Palladium Spot \$/Oz	2844.29	-0.52%
Gold Future	1806.9	0.06%
Silver Future	26.285	0.18%
Platinum Future	1116.5	-0.58%
Palladium Future	2843	-0.57%

Base Metals

LME Aluminum	2490	0.00%
LME Copper	9409	0.00%
LME Zinc	2950	0.00%
LME Nickel	18679	0.00%
LME Lead	2333	0.00%
LME Tin	32094	0.00%

Agricultural

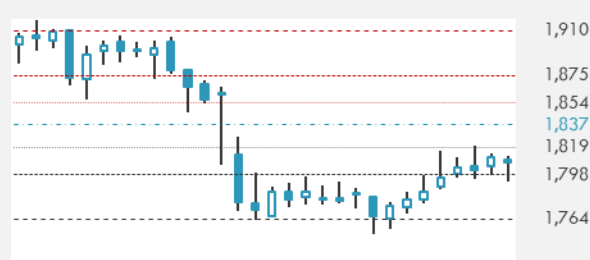
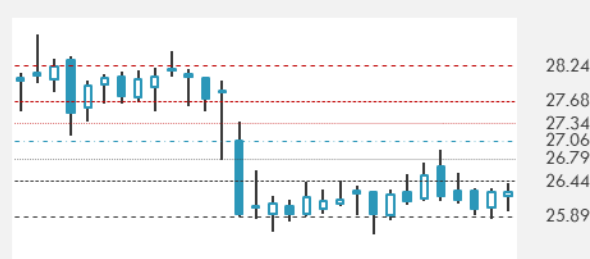
Corn CBT	529	-0.75%
Wheat CBT	638.75	-0.31%
Soybeans CBT	1350.25	0.00%
Bean Meal CBT	361	-0.41%
Rough Rice CBT	12.79	-0.81%
MDE Palm Oil	3922	1.53%
Soybean CBT	62.7	0.55%
Coffee ICE	154	0.00%
Sugar #11 ICE	16.99	0.00%
Cotton #2 ICE	87.95	-0.24%
Cocoa ICE	2430	0.00%
Ethanol CME	2.32	0.00%
Lumber CME	712.9	0.00%
Orange Juice ICE	126.8	0.00%
Live Cattle CME	125.8	0.00%
Feeder Cattle CME	158.15	0.00%
Lean Hogs CME	87.325	0.00%

COMMODITY INDEX SUPPORT & RESISTANCE

WTI OIL 30 DAYS SUPPORT & RESISTANCE


- Oil is holding the mid-\$70s as investors wait for a signal from OPEC+ on how it'll resolve the dispute over production policy.
- OPEC+ will manage to come to an agreement on output, but before they do, they are missing out on the highest demand month of this year in August, according to Ed Morse at Citigroup Inc.

Source: Bloomberg, Reuters

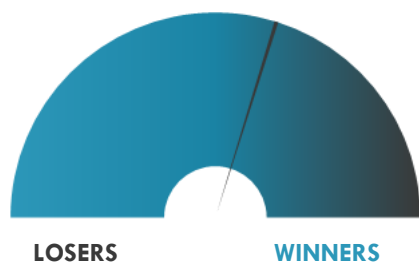
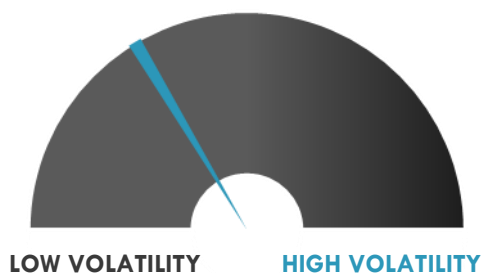
GOLD 30 DAYS SUPPORT & RESISTANCE

SILVER 30 DAYS SUPPORT & RESISTANCE


TOP 10 WINNERS

	Ticker	Last Price	Daily %
S&P 500 Stocks			
Albemarle Corp	ALB	187.49	+6.83%
Tesla Inc	TSLA	685.7	+4.38%
L Brands Inc	LB	76.56	+4.16%
Walt Disney Co/The	DIS	184.38	+4.15%
Discover Financial Serv.	DFS	126.59	+3.42%
SVB Financial Group	SIVB	593.66	+3.20%
Lincoln National Corp	LNC	63.81	+2.90%
T Rowe Price Group Inc	TROW	211.1	+2.88%
Hartford Financial Serv.	HIG	63.31	+2.81%
Generac Holdings Inc	GNRC	448.15	+2.70%

TOP 10 LOSERS

	Ticker	Last Price	Daily %
S&P 500 Stocks			
HP Inc	HPQ	29.21	-2.76%
Biogen Inc	BIIB	349.04	-2.55%
F5 Networks Inc	FFIV	186.02	-2.54%
Charter Com.	CHTR	719.8	-2.26%
Akamai Technologies	AKAM	115.55	-1.99%
NVR Inc	NVR	4961.67	-1.96%
Paycom Software Inc	PAYC	376.13	-1.94%
Citrix Systems Inc	CTXS	113.97	-1.89%
Arista Networks Inc	ANET	370.9	-1.89%
VeriSign Inc	VRSN	229.16	-1.66%

S&P 500 DISTRIBUTION

S&P VOLATILITY INDEX


- SPAC PWP Forward Acquisition Corp. I rose 1.2% in after hours trading on a report that it's in talks to take online insurance marketplace Policygenius public.
- Gran Tierra Energy +4.7% post-market after restoring full-year production guidance with the end of Colombian blockades that had affected the company.
- Shoals Technologies launches an offering of 13.38M shares. The company is offering 8.39M shares of common stock and certain selling stockholders, including an entity controlled by Oaktree Capital Management and Mehgan Peetz, the company's general counsel, are offering 4.99M shares of common stock.
- Albemarle (+6.8%) rallied to a new all-time intraday high yesterday while also leading the S&P 500 leaderboard, despite no news out on the company or the broader lithium sector.
- Middlesex Water has jumped 8.9% postmarket following the word that it will join the S&P SmallCap 600 index. Middlesex is going into the index to replace Luminex, which is set to be acquired by DiaSorin.
- Gatos Silver -4.9% post-market after commencing a public offering of 6.5M common shares and a secondary offering for 1.82M shares, with underwriters options to purchase as many as 975K and 273K additional shares, respectively.
- IVERIC bio shares went down 4.9% to \$8.57 in after-hours trading after the company announced it was commencing a public offering of \$100M of common stock.
- PLx Pharma shares surged more than 24% post market after the company announced the launch of its VAZALORE product in Walmart stores nationwide.

KEY ECONOMIC INDICATORS

Country	Event	Surv (M)	Actual	Prior	Time
Australia	NAB Business Confidence	--	11	20	4:30
Australia	NAB Business Conditions	--	24	37	4:30
China	Trade Balance	4.48E+10	5.15E+10	4.55E+10	6:00
China	Exports YoY	23.00%	32.20%	27.90%	6:00
China	Imports YoY	29.50%	36.70%	51.10%	6:00
France	CPI YoY	1.50%	--	1.50%	9:45
France	CPI EU Harmonized YoY	1.90%	--	1.90%	9:45
France	CPI MoM	0.20%	--	0.20%	9:45
France	CPI EU Harmonized MoM	0.20%	--	0.20%	9:45
Germany	CPI YoY	2.30%	2.30%	2.30%	9:00
Germany	CPI MoM	0.40%	0.40%	0.40%	9:00
Germany	CPI EU Harmonized YoY	2.10%	2.10%	2.10%	9:00
Germany	CPI EU Harmonized MoM	0.40%	0.40%	0.40%	9:00
United States	CPI MoM	0.50%	--	0.60%	15:30
United States	Real Avg Weekly Earnings YoY	--	--	-2.20%	15:30
United States	CPI Ex Food and Energy MoM	0.40%	--	0.70%	15:30
United States	CPI YoY	4.90%	--	5.00%	15:30
United States	Monthly Budget Statement	-1.92E+11	--	-8.64E+11	21:00
United States	NFIB Small Business Optimism	99.5	--	99.6	13:00
United States	CPI Ex Food and Energy YoY	4.00%	--	3.80%	15:30

Source: Bloomberg

Banque BEMO sal

Head Office - Private and Corporate Banking

Elias Sarkis Ave., Bemo Bldg , Ashrafieh - Lebanon
Tel: +961 1 200 505 Fax: +961 1 217 860

Research & Development research@bemobank.com

Elias Sarkis Ave., Bemo Bldg , Ashrafieh - Lebanon
Tel: +961 1 200 505 Fax: +961 1 217 860

Disclaimer:

This report is published for information purposes only. The information herein has been compiled from, or based upon sources considered to be reliable (Bloomberg, SeekingAlpha, DailyStar...), but we do not guarantee or assume responsibility for its completeness and accuracy. This document should not be construed as a solicitation to take part in any investment, or as constituting any representation or warranty on our part. This report is not to be relied upon in substitution for the exercise of specialists.

We may not have taken any steps to ensure that the securities referred to in this report are suitable for any particular investor. The investments and services contained or referred to herein are not purported to be exhaustive, any person considering an investment should seek specialist advice on the suitability of an investment.

Nothing in this report constitutes investment, legal, accounting or tax advice, or a representation that any investment or strategy is suitable or appropriate to your individual circumstances, or otherwise constitutes a personal recommendation. Clients understand that it is their responsibility to seek legal and/or tax advice regarding the legal and tax consequences of their investment transactions. The consequences of any action taken on the basis of information contained herein are solely the responsibility of the recipient.

Investment instruments are subject to risk, including possible loss of principal amount invested. Past performance should not be taken as an indication or guarantee of future performance, and no representation or warranty, express or implied, is made regarding future performance. The value of securities and financial instruments is subject to exchange rate fluctuation that may have a positive or adverse effect on the price or income of such securities or financial instruments. Some investments mentioned in this report may have a high level of volatility. High volatility investments may experience sudden and large falls in their value causing losses when that investment is realized. Some investments may not be readily realizable and it may be difficult to sell or realize those investments, similarly it may prove difficult to obtain reliable information about the value, or risks, to which such an investment is exposed.

This report may provide the addresses of websites or references. We have not reviewed any such site and takes no responsibility for the content contained therein. Such address or reference is provided solely for convenience and information. Accessing such website through this report shall be at the recipients own risk.