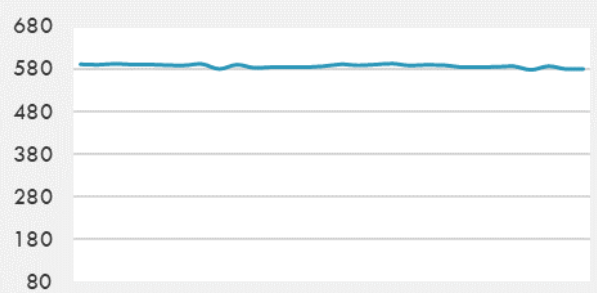
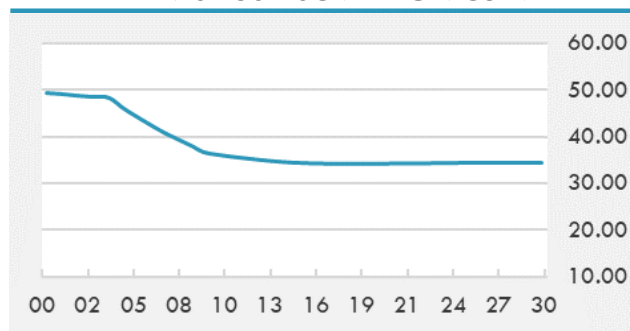


**BEIRUT STOCK EXCHANGE**

	Last	Daily %	YTD %	Dividend %
MSCI Lebanon	579.25	-1.21%	32.33%	
<b>Development and Reconstruction</b>				
Solidere A	24.48	-0.69%	32.32%	
Solidere B	24.2	-2.81%	32.31%	
<b>Banking</b>				
Audi Listed	2.1	0.00%	72.13%	
BLC Listed	0.93	0.00%	0.00%	
BOB Listed	17.8	0.00%	0.00%	
Byblos Listed	0.95	0.00%	79.25%	
BEMO Listed	1.2	0.00%	0.00%	
BLOM Listed	3.33	0.00%	60.87%	
<b>Trading</b>				
RYMCO	3.19	0.00%	0.00%	
<b>Industrial</b>				
Holcim	19.7	0.00%	35.86%	
Ciments Blancs	4.5	0.00%	9.76%	

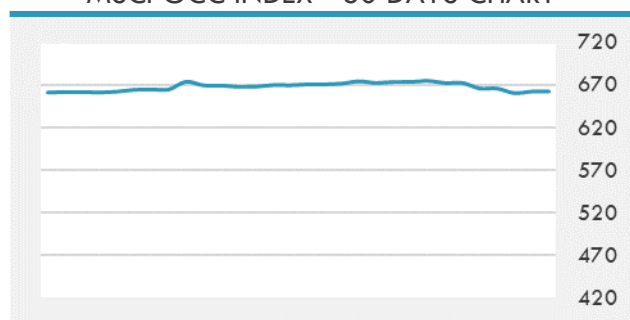
**MSCI LEBANON INDEX - 30 DAYS CHART**

**LEBANESE USD SOVEREIGN CURVE**


- The Tadawul All Share Index of the Saudi Exchange closed Tuesday higher by 0.35% or 37.31 points at 10,735.85 points.
- The main index of Dubai Financial Market ended Tuesday 0.1% higher at 2,760.89 points.
- Emaar Properties has celebrated the listing of a \$500 million Sukuk of a 10-year tenor on Nasdaq Dubai. The Sukuk issuance is part of the company's \$2 billion trust certificates issuance program solely listed on Nasdaq Dubai, according to a press release on Tuesday.

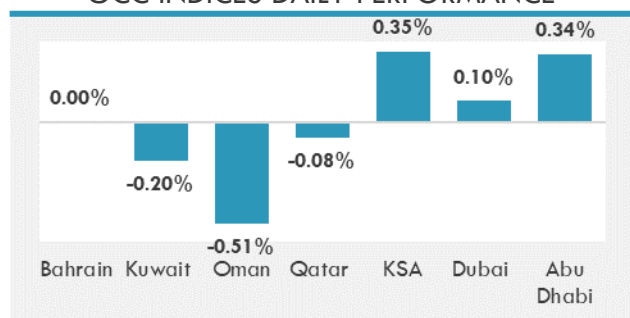
Source: Daily Star, Gulf Business, Mubasher, Bloomberg, Businessnews LB

**GCC EQUITY INDICES**

	Last Price	Daily %	YTD %
Bahrain	1575.02	0.00%	5.72%
Kuwait	6357.85	-0.20%	14.64%
Oman	4087.24	-0.51%	11.71%
Qatar	10768.08	-0.08%	3.18%
KSA	10735.85	0.35%	23.55%
Dubai	2760.89	0.10%	10.79%
Abu Dhabi	7046.47	0.34%	39.66%

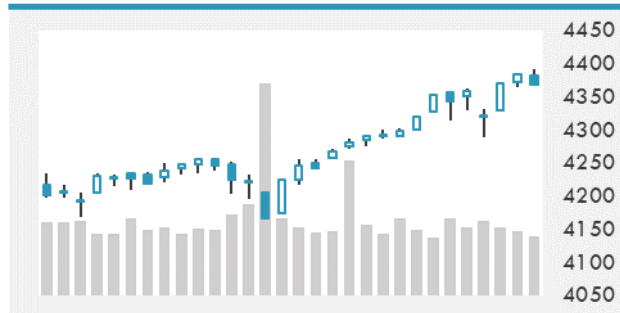
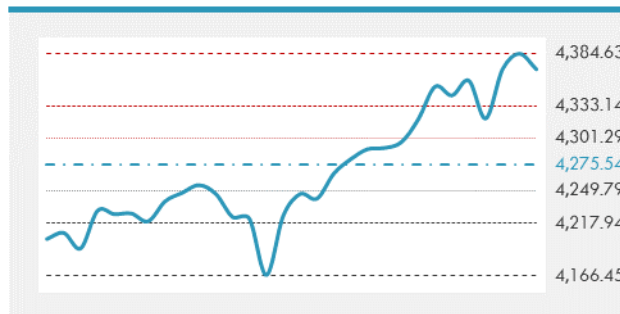
**MSCI GCC INDEX - 30 DAYS CHART**

**LOCAL/GCC FOREIGN EXCHANGE**

	Cross	Last Price
Lebanese Pound Spot	USD/LBP	1515.5
Bahraini Dinar Spot	USD/BHD	0.377
Kuwaiti Dinar Spot	USD/KWD	0.3006
Omani Rial Spot	USD/OMR	0.38503
Qatari Riyal Spot	USD/QAR	3.6417
Saudi Riyal Spot	USD/SAR	3.7509
UAE Dirham Spot	USD/AED	3.673

**GCC INDICES DAILY PERFORMANCE**


**UNITED STATES EQUITY MARKET INDICES**

	Last Price	Daily %	YTD %	Δ10D Vol
<b>Major Indices</b>				
Dow Jones	34888.79	0.00%	13.99%	0.37%
S&P 500	4369.21	0.00%	16.32%	0.50%
Nasdaq	14677.65	0.00%	13.88%	0.53%
<b>Sectors Indices</b>				
Discretionary	1465.77	0.00%	12.53%	4.33%
Staples	723.07	0.00%	3.84%	-0.52%
Energy	396.15	0.00%	38.45%	0.11%
Financials	609.5	0.00%	24.28%	0.80%
Healthcare	1502.55	0.00%	13.48%	0.21%
Industrials	867.64	0.00%	15.76%	1.12%
IT	2669.19	0.00%	16.49%	-0.20%
Materials	517.69	0.00%	13.60%	0.98%
Com. Services	270.09	0.00%	21.71%	-0.60%
Utilities	326.96	0.00%	2.47%	-3.71%
Real Estate	285.75	0.00%	25.38%	3.40%

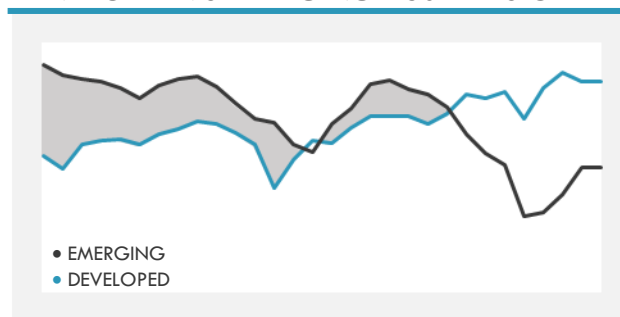
**S&P 500 INDEX - 30 DAYS CHART**

**S&P 500 SUPPORT & RESISTANCE**


- The S&P 500 retreated Tuesday after a key measure of inflation showed prices paid by U.S. consumers surged in June by the most since 2008.
- European equities closed little changed at a fresh high as investors continued to shift out of cyclical sectors, while positive earnings boosted telecom and media shares.
- Asian equities fell after two days of gains, with China leading declines, following a surprise jump in U.S. inflation.

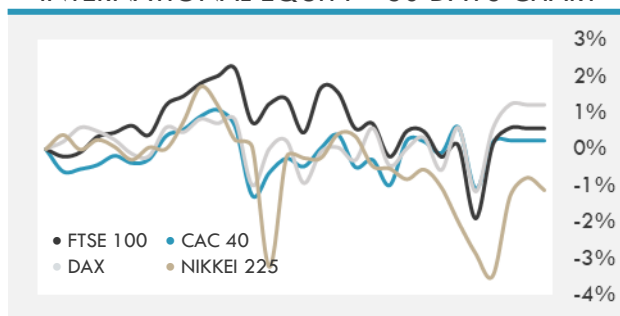
Source: Bloomberg, Financial Times, Reuters

**INTERNATIONAL MARKETS INDICES**

	Last Price	Daily %	YTD %	Δ10D Vol
World	1774.02	0.00%	12.38%	-0.09%
Developed	3059.28	0.00%	13.73%	0.08%
Emerging	1339.51	0.00%	3.74%	2.18%
Frontier	2527.57	0.00%	-2.48%	-0.05%
Europe	152.66	0.00%	15.56%	-0.95%
Latin America	2568.41	0.00%	4.76%	-0.33%
Asia Pacific	206.04	0.00%	3.06%	1.58%

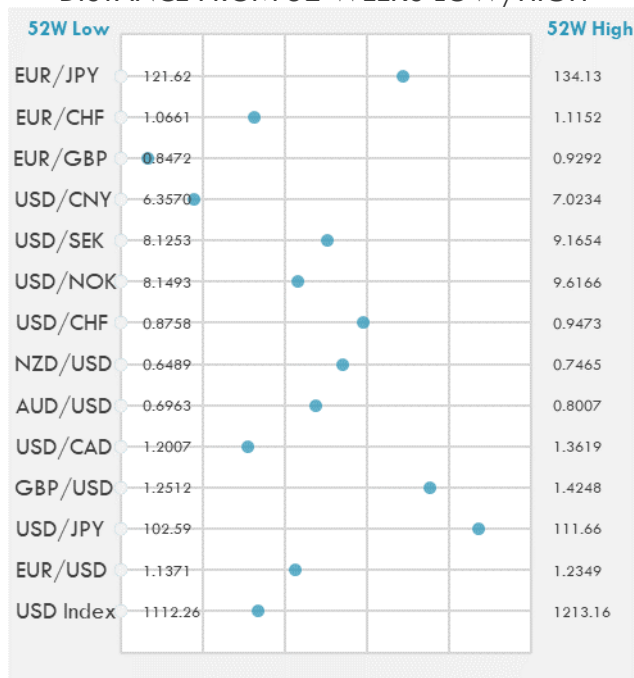
**DEVELOPED VS EMERGING - 30 DAYS CHART**

**INTERNATIONAL EQUITY INDICES**

	Last Price	Daily %	YTD %	Δ10D Vol
EuroStoxx 50	4094.56	0.00%	15.25%	-1.03%
FTSE 100	7124.72	0.00%	10.28%	-0.65%
CAC 40	6558.47	0.00%	18.14%	-0.80%
DAX	15789.64	0.00%	15.10%	-1.22%
Swiss SMI	12071.05	0.00%	12.78%	-0.87%
Nikkei 225	28620.03	-0.34%	4.28%	0.34%
CSI 300	5095.62	-0.90%	-2.22%	-0.42%

**INTERNATIONAL EQUITY - 30 DAYS CHART**


**FOREIGN EXCHANGE MARKET**

	Last Price	Daily %	Δ10D	Vol 25	ΔRR
<b>Major USD Cross Rate</b>					
USD Index	1145.89	-0.11%	-0.14%	-	
EUR/USD	1.1786	0.08%	0.07%	-0.100	
USD/JPY	110.51	-0.11%	-0.52%	-0.245	
GBP/USD	1.3821	0.05%	-0.56%	-0.363	
USD/CAD	1.2507	-0.05%	-0.06%	0.803	
AUD/USD	0.7459	0.16%	-0.12%	-0.765	
NZD/USD	0.7017	0.99%	1.68%	-0.665	
USD/CHF	0.9181	-0.02%	-0.03%	0.240	
USD/NOK	8.7805	-0.02%	0.06%	1.108	
USD/SEK	8.6504	-0.08%	0.03%	0.330	
USD/CNY	6.4755	0.10%	-0.13%	0.300	
<b>Major EUR Cross Rate</b>					
EUR/GBP	0.85271	0.03%	-0.73%	0.170	
EUR/CHF	1.08206	0.02%	0.02%	0.035	
EUR/JPY	130.24	-0.04%	-0.50%	-0.523	

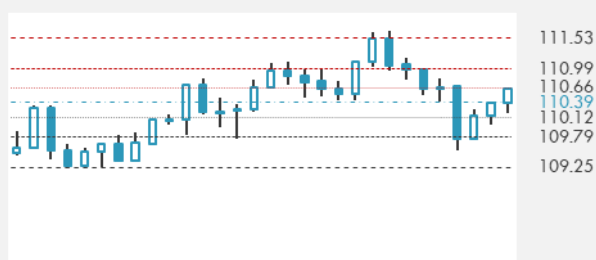
**DISTANCE FROM 52 WEEKS LOW/HIGH**


- The dollar climbed along with Treasury yields after a report showed U.S. inflation surged by the most since 2008, fueling speculation that the case for the Federal Reserve to tighten is gradually building. The euro dropped by the most in more than three weeks.
- The New Zealand dollar gained the most among the Group-of-10 currencies after the nation's central bank said it will end quantitative easing this month, cementing expectations for interest-rate hikes in 2021. South Korea's won led declines in emerging Asian currencies.

Source: Bloomberg, Financial Times, Reuters

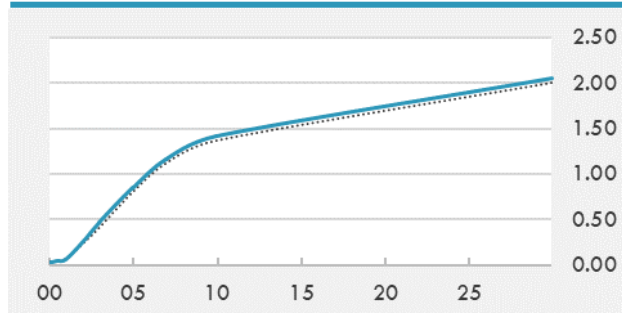
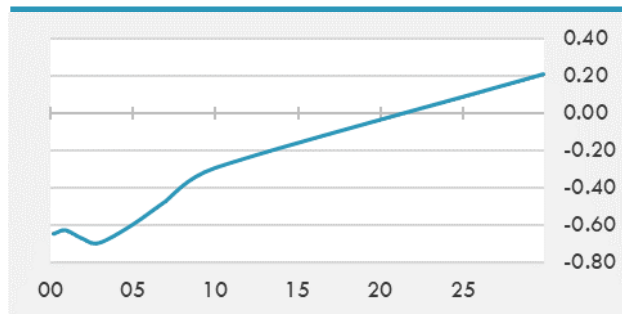
**EUR/USD 30 DAYS SUPPORT & RESISTANCE**

**GBP/USD 30 DAYS SUPPORT & RESISTANCE**

**USD/JPY 30 DAYS SUPPORT & RESISTANCE**

**USD/CAD 30 DAYS SUPPORT & RESISTANCE**


**GLOBAL BOND INDICES**

	Yield	ΔYield (in Bps)
<b>Benchmark Indices</b>		
US 10 Years Benchmark	1.4166	0.052
EU 10 Years Benchmark	-0.294	0.001
UK 10 Years Benchmark	0.632	-0.019
<b>Sovereign Bonds</b>		
US Treasury Bond	0.594	0
Eurozone Sovereign Bond	-0.428	0
Japan Sovereign Bond	-0.104	0
<b>Corporate Bonds</b>		
US Corporate TR	2.048	0.036
US High Yield Bond TR	3.684	0.070
EUR Aggregate Corporate TR	0.275	-0.005
EUR High Yield TR	3.021	-0.014
USD Emerging Market IG & HY	3.861	0.016

**US TREASURIES YIELD CURVE**

**EUR GENERIC YIELD CURVE**


- The spike in U.S. CPI may be due to temporary factors but the recent low of around 1.3% for 10-year Treasury yields may hold for now, Noriatsu Tanji, chief bond strategist at Mizuho Securities, writes in a note.
- Maturities across the German sovereign yield curve were little changed in Tuesday afternoon trading. Gilts bull flatten.
- Demand for carry and a favorable supply outlook push Italian bonds higher. Bunds edge higher as Germany, Netherlands, Italy and the EU sell a combined EU31.75b of debt.

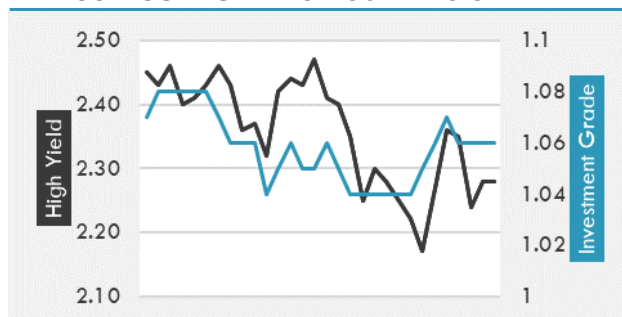
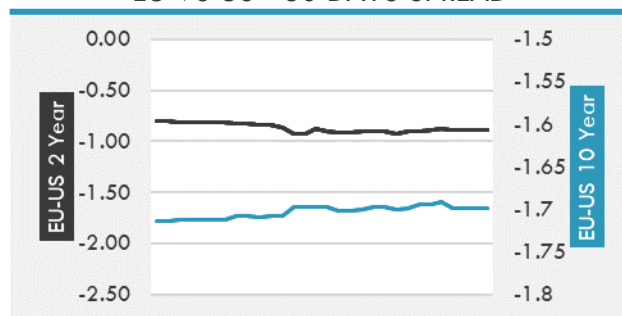
Source: Bloomberg, Financial Times, Economic times, Reuters

**OVERNIGHT RATES - SWAPS**

	Yield	ΔYield (in Bps)
3M USD LIBOR	0.133	0.000
3M EUR EURIBOR	-0.543	0.000
3M GBP LIBOR	0.077	0.000
3Y USD SWAP	0.568	0.047
5Y USD SWAP	0.929	0.055
10Y USD SWAP	1.414	0.053
30Y USD SWAP	1.777	0.050

**FIXED INCOME SPREADS**

	Spread	ΔSpread (in Bps)
USD 3M vs 10Y Spread	1.363	0.050
USD 2Y vs 10Y Spread	1.162	0.026
USD IG Spread	1.060	0.000
USD HY Spread	2.280	0.040
EU vs US 10Y Spread	-1.652	0.000
EU vs US 2Y Spread	-0.888	0.000
EM vs Benchmark Spread	262.200	0.000

**USD CORPORATES - 30 DAYS SPREAD**

**EU VS US - 30 DAYS SPREAD**


**GLOBAL COMMODITIES MARKET**

	Last Price	Daily %
Commodity Index	94.40	-0.08%

**Energy**

WTI Crude Future	75.06	-0.25%
Brent Crude Future	76.29	-0.26%
NYMEX Gasoline	231.24	-0.25%
NYMEX Heat Oil	217.46	-0.45%
ICE Gasoil	616.25	0.53%
NYMEX Natural Gas	3.706	0.27%

**Precious Metals**

Gold Spot \$/Oz	1813.52	0.32%
Silver Spot \$/Oz	26.1128	0.48%
Platinum Spot \$/Oz	1112.56	0.33%
Palladium Spot \$/Oz	2836.53	0.27%
Gold Future	1814	0.23%
Silver Future	26.17	0.11%
Platinum Future	1107.3	-0.35%
Palladium Future	2833.5	0.04%

**Base Metals**

LME Aluminum	2536	0.00%
LME Copper	9413	0.00%
LME Zinc	2935	0.00%
LME Nickel	18778	0.00%
LME Lead	2311	0.00%
LME Tin	32381	0.00%

**Agricultural**

Corn CBT	539	-0.32%
Wheat CBT	636.5	0.43%
Soybeans CBT	1349.75	-0.15%
Bean Meal CBT	358.1	-0.53%
Rough Rice CBT	12.96	-0.73%
MDE Palm Oil	3940	-0.93%
Soybean CBT	63.53	0.08%
Coffee ICE	152.25	0.00%
Sugar #11 ICE	17.08	0.00%
Cotton #2 ICE	88.77	0.35%
Cocoa ICE	2399	0.00%
Ethanol CME	2.32	0.00%
Lumber CME	649.9	0.00%
Orange Juice ICE	127.15	0.00%
Live Cattle CME	127.175	0.00%
Feeder Cattle CME	158.825	0.00%
Lean Hogs CME	89.375	0.00%

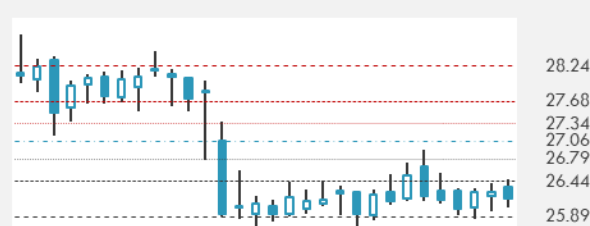
**COMMODITY INDEX SUPPORT & RESISTANCE**

**WTI OIL 30 DAYS SUPPORT & RESISTANCE**


- Oil edged lower after closing at the highest level since October 2018 with an industry report pointing to a further draw in U.S. crude stockpiles, adding to signs of a rapidly tightening global market.
- Gold advanced as U.S. inflation data leaps past estimates.

Source: Bloomberg, Reuters

**GOLD 30 DAYS SUPPORT & RESISTANCE**

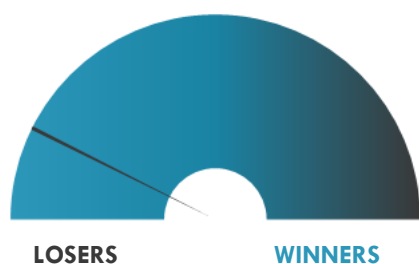
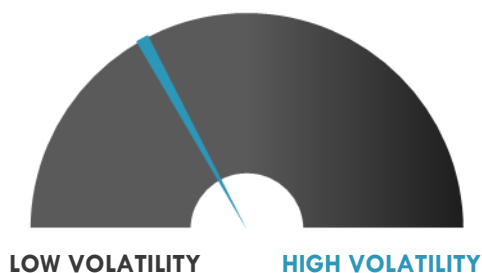
**SILVER 30 DAYS SUPPORT & RESISTANCE**


**TOP 10 WINNERS**

	Ticker	Last Price	Daily %
<b>S&amp;P 500 Stocks</b>			
Teledyne Technologies	TDY	437.21	+2.42%
PepsiCo Inc	PEP	152.96	+2.31%
Mastercard Inc	MA	383.71	+2.17%
Visa Inc	V	242.35	+1.88%
Autodesk Inc	ADSK	296.42	+1.54%
Microsoft Corp	MSFT	280.98	+1.32%
Electronic Arts Inc	EA	143.25	+1.32%
Western Union Co/The	WU	23.47	+1.16%
Domino's Pizza Inc	DPZ	485.68	+1.16%
Fiserv Inc	FISV	110.09	+1.16%

**TOP 10 LOSERS**

	Ticker	Last Price	Daily %
<b>S&amp;P 500 Stocks</b>			
Conagra Brands Inc	CAG	33.98	-5.43%
Hewlett Packard	HPE	13.76	-4.91%
Franklin Resources Inc	BEN	30.7	-4.89%
Norwegian Cruise Line	NCLH	26.09	-4.36%
Boeing Co/The	BA	228.2	-4.23%
Carnival Corp	CCL	22.85	-4.23%
United Airlines Holdings	UAL	48.5	-4.19%
AES Corp/The	AES	24.92	-3.97%
American Airlines	AAL	20.02	-3.93%
Royal Caribbean	RCL	78.51	-3.72%

**S&P 500 DISTRIBUTION**

**S&P VOLATILITY INDEX**


- SPAC Stable Road Acquisition, which announced in October a deal to take space-cargo company Momentus public, dropped 8.8% in after hours trading after SRAC, Momentus and executives came to a settlement agreement with the U.S. Securities and Exchange Commission.
- Oxbridge Re Holdings stock soars 60% in after-hours trading after activist investor Custodian Ventures, led by CEO David E. Lazar, discloses a 9.9% stake in the property & casualty reinsurance company.
- L Brands announces the commencement of an underwritten secondary offering of 20M shares. The company also said that it has agreed to repurchase an aggregate of 10M shares directly from one of the selling stockholders.
- CorePoint Lodging continued to execute on its non-core disposition strategy with 25 non-core hotels sold in the Q2, for a combined gross sales price of ~\$143M during the quarter, resulting in 175 hotels owned as of June 30, 2021.
- scPharmaceuticals has added ~8.7% in the post-market after the company announced positive top-line results from its FREEDOM-HF study that was designed to evaluate the effect of FUROSCIX on heart failure-related costs in patients with chronic heart failure.
- Compass Minerals +2.9% post-market after identifying a lithium brine resource of 2.4M metric tons lithium carbonate equivalent at its active solar evaporation site near Ogden, Utah.
- American Airlines Group says it expects to report Q2 revenue to be down 37.5% compared to the level generated in 2019. Prior guidance from AAL was for a drop of 40%.

**KEY ECONOMIC INDICATORS**

Country	Event	Surv (M)	Actual	Prior	Time
Australia	Westpac Consumer Conf SA MoM	--	1.50%	-5.20%	3:30
Canada	Bank of Canada Rate Decision	0.25%	--	0.25%	17:00
Finland	CPI YoY	--	2.00%	2.20%	8:00
Finland	CPI MoM	--	-0.10%	0.20%	8:00
Ireland	Property Prices MoM	--	--	0.80%	13:00
Japan	Industrial Production MoM	--	-6.50%	-5.90%	7:30
Japan	Industrial Production YoY	--	21.10%	22.00%	7:30
Japan	Capacity Utilization MoM	--	-6.80%	1.10%	7:30
Slovakia	CPI YoY	--	--	2.20%	10:00
Slovakia	CPI MoM	--	--	0.80%	10:00
Spain	CPI YoY	2.60%	--	2.60%	10:00
Spain	CPI EU Harmonised YoY	2.40%	--	2.40%	10:00
Spain	CPI MoM	0.40%	--	0.40%	10:00
Spain	CPI EU Harmonised MoM	0.40%	--	0.40%	10:00
United Kingdom	CPI YoY	2.20%	--	2.10%	9:00
United Kingdom	CPI MoM	0.20%	--	0.60%	9:00
United Kingdom	CPI Core YoY	2.00%	--	2.00%	9:00
United Kingdom	RPI MoM	0.30%	--	0.30%	9:00
United States	MBA Mortgage Applications	--	--	-1.80%	14:00
United States	PPI Final Demand MoM	0.60%	--	0.80%	15:30

Source: Bloomberg

## Banque BEMO sal

### Head Office - Private and Corporate Banking

Elias Sarkis Ave., Bemo Bldg , Ashrafieh - Lebanon  
Tel: +961 1 200 505 Fax: +961 1 217 860

### Research & Development [research@bemobank.com](mailto:research@bemobank.com)

Elias Sarkis Ave., Bemo Bldg , Ashrafieh - Lebanon  
Tel: +961 1 200 505 Fax: +961 1 217 860

#### Disclaimer:

This report is published for information purposes only. The information herein has been compiled from, or based upon sources considered to be reliable (Bloomberg, SeekingAlpha, DailyStar...), but we do not guarantee or assume responsibility for its completeness and accuracy. This document should not be construed as a solicitation to take part in any investment, or as constituting any representation or warranty on our part. This report is not to be relied upon in substitution for the exercise of specialists.

We may not have taken any steps to ensure that the securities referred to in this report are suitable for any particular investor. The investments and services contained or referred to herein are not purported to be exhaustive, any person considering an investment should seek specialist advice on the suitability of an investment.

Nothing in this report constitutes investment, legal, accounting or tax advice, or a representation that any investment or strategy is suitable or appropriate to your individual circumstances, or otherwise constitutes a personal recommendation. Clients understand that it is their responsibility to seek legal and/or tax advice regarding the legal and tax consequences of their investment transactions. The consequences of any action taken on the basis of information contained herein are solely the responsibility of the recipient.

Investment instruments are subject to risk, including possible loss of principal amount invested. Past performance should not be taken as an indication or guarantee of future performance, and no representation or warranty, express or implied, is made regarding future performance. The value of securities and financial instruments is subject to exchange rate fluctuation that may have a positive or adverse effect on the price or income of such securities or financial instruments. Some investments mentioned in this report may have a high level of volatility. High volatility investments may experience sudden and large falls in their value causing losses when that investment is realized. Some investments may not be readily realizable and it may be difficult to sell or realize those investments, similarly it may prove difficult to obtain reliable information about the value, or risks, to which such an investment is exposed.

This report may provide the addresses of websites or references. We have not reviewed any such site and takes no responsibility for the content contained therein. Such address or reference is provided solely for convenience and information. Accessing such website through this report shall be at the recipients own risk.