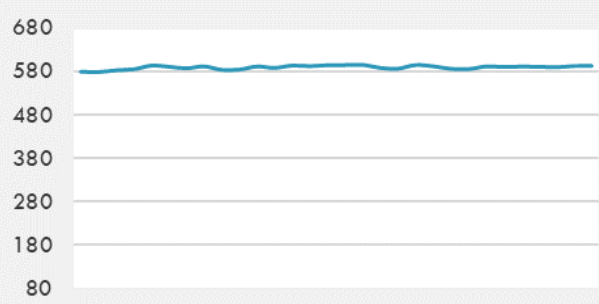
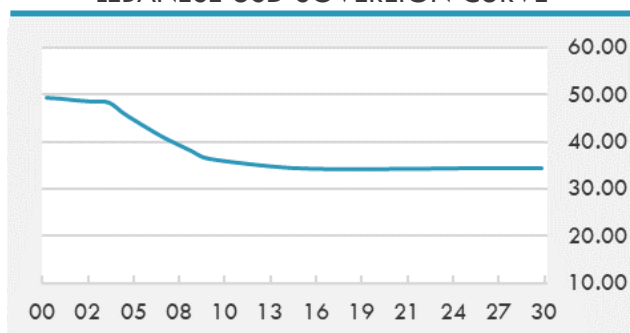


BEIRUT STOCK EXCHANGE

	Last	Daily %	YTD %	Dividend %
MSCI Lebanon	592.23	0.45%	35.29%	
Development and Reconstruction				
Solidere A	25	0.40%	35.14%	
Solidere B	24.83	1.31%	35.76%	
Banking				
Audi Listed	2.22	1.83%	81.97%	
BLC Listed	0.93	0.00%	0.00%	
BOB Listed	17.8	0.00%	0.00%	
Byblos Listed	0.93	-6.06%	75.47%	
BEMO Listed	1.2	0.00%	0.00%	
BLOM Listed	3.16	0.00%	52.66%	
Trading				
RYMCO	3.19	0.00%	0.00%	
Industrial				
Holcim	20.01	0.00%	38.00%	
Ciments Blancs	4.5	0.00%	9.76%	

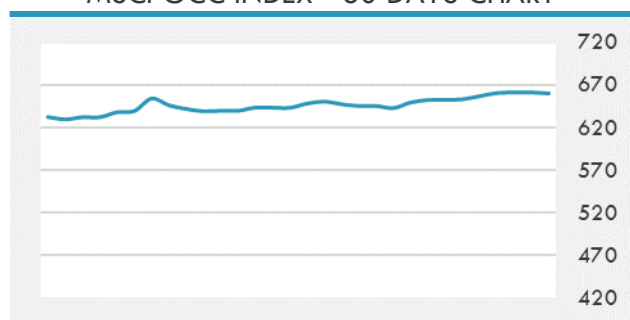
MSCI LEBANON INDEX - 30 DAYS CHART

LEBANESE USD SOVEREIGN CURVE


- The Central Bank Friday instructed Lebanese commercial banks to allow customers with foreign currency accounts before Oct. 2019 to withdraw \$400 a month and its equivalent in Lebanese pounds based on the official rate of Sayrafa platform. Some bankers said they were waiting for a new circular from BDL to explain the payment of this money to the customers. They added that BDL must reduce the mandatory reserves to allow banks to pay their customers in fresh dollars. BDL's foreign currency reserves are estimated to be less than \$15 billion.

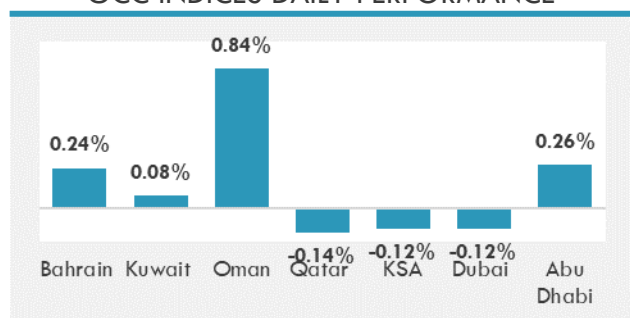
Source: Daily Star, Gulf Business, Mubasher, Bloomberg, Businessnews LB

GCC EQUITY INDICES

	Last Price	Daily %	YTD %
Bahrain	1538.37	0.24%	3.51%
Kuwait	6256.75	0.08%	12.90%
Oman	3965.51	0.84%	8.38%
Qatar	10739.14	-0.14%	2.91%
KSA	10685.45	-0.12%	22.97%
Dubai	2820.71	-0.12%	13.19%
Abu Dhabi	6623.41	0.26%	31.28%

MSCI GCC INDEX - 30 DAYS CHART

LOCAL/GCC FOREIGN EXCHANGE

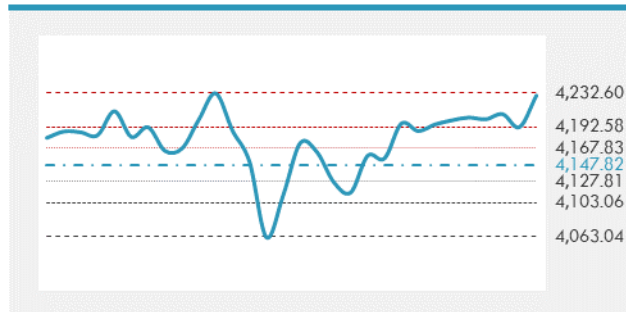
	Cross	Last Price
Lebanese Pound Spot	USD/LBP	1515.5
Bahraini Dinar Spot	USD/BHD	0.37704
Kuwaiti Dinar Spot	USD/KWD	0.30075
Omani Rial Spot	USD/OMR	0.385
Qatari Riyal Spot	USD/QAR	3.6413
Saudi Riyal Spot	USD/SAR	3.7503
UAE Dirham Spot	USD/AED	3.673

GCC INDICES DAILY PERFORMANCE


UNITED STATES EQUITY MARKET INDICES

	Last Price	Daily %	YTD %	Δ10D Vol
Major Indices				
Dow Jones	34756.39	0.00%	13.56%	0.34%
S&P 500	4229.89	0.00%	12.61%	1.19%
Nasdaq	13814.49	0.00%	7.19%	1.71%
Sectors Indices				
Discretionary	1366.39	0.00%	4.90%	0.22%
Staples	732.67	0.00%	5.22%	0.21%
Energy	415.85	0.00%	45.33%	-0.16%
Financials	637.75	0.00%	30.04%	-0.61%
Healthcare	1420.85	0.00%	7.31%	0.42%
Industrials	888.37	0.00%	18.52%	-0.05%
IT	2455.64	0.00%	7.17%	2.85%
Materials	550.61	0.00%	20.82%	-0.02%
Com. Services	258.81	0.00%	16.62%	1.25%
Utilities	330.4	0.00%	3.55%	-0.68%
Real Estate	278.18	0.00%	22.06%	-0.50%

S&P 500 INDEX - 30 DAYS CHART

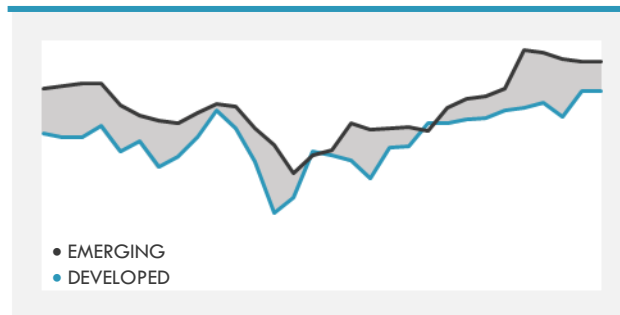
S&P 500 SUPPORT & RESISTANCE


- U.S. stock-index futures fluctuated near record highs as investors were awaiting key jobs data, including May non-farm payrolls, for clues on how much longer stimulus may be needed to support the economic recovery.
- European stocks edged higher Friday as an increase in U.S. hiring boosted optimism over the economic recovery and assuaged concerns about the rollback of monetary stimulus.
- Financial and internet stocks weighed on a key measure of Asian equities, causing it to erase earlier gains.

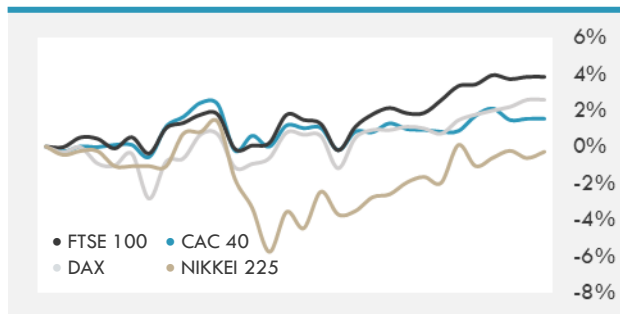
Source: Bloomberg, Financial Times, Reuters

INTERNATIONAL MARKETS INDICES

	Last Price	Daily %	YTD %	Δ10D Vol
World	1749.62	0.00%	10.84%	0.13%
Developed	2997.36	0.00%	11.42%	0.13%
Emerging	1381.56	0.00%	6.99%	-0.22%
Frontier	2620.11	0.00%	1.09%	-0.34%
Europe	149.76	0.00%	13.37%	0.10%
Latin America	2665.39	0.00%	8.71%	0.02%
Asia Pacific	210.17	0.00%	5.13%	-0.09%

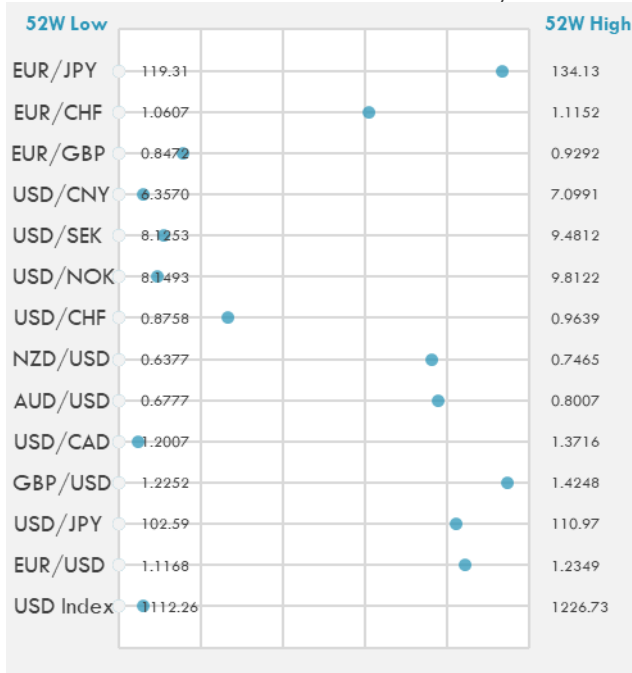
DEVELOPED VS EMERGING - 30 DAYS CHART

INTERNATIONAL EQUITY INDICES

	Last Price	Daily %	YTD %	Δ10D Vol
EuroStoxx 50	4089.38	0.00%	15.11%	0.00%
FTSE 100	7069.04	0.00%	9.42%	-0.02%
CAC 40	6515.66	0.00%	17.37%	-0.04%
DAX	15692.9	0.00%	14.39%	-0.04%
Swiss SMI	11570.68	0.00%	8.10%	-0.16%
Nikkei 225	29041.37	0.35%	5.82%	0.50%
CSI 300	5256.6	-0.49%	0.87%	0.04%

INTERNATIONAL EQUITY - 30 DAYS CHART


FOREIGN EXCHANGE MARKET

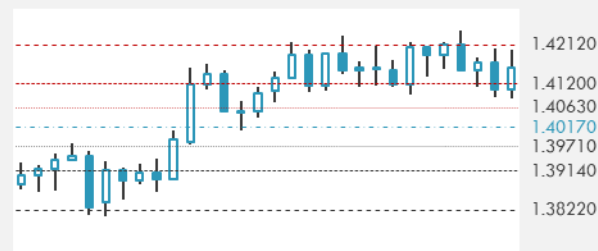
	Last Price	Daily %	Δ10D	Vol 25	ΔRR
Major USD Cross Rate					
USD Index	1119.15	0.03%	-0.03%	-	
EUR/USD	1.2164	-0.02%	-0.34%	0.003	
USD/JPY	109.47	-0.05%	0.03%	0.003	
GBP/USD	1.4143	-0.10%	0.02%	-0.223	
USD/CAD	1.2087	0.02%	-0.08%	0.263	
AUD/USD	0.7736	-0.04%	0.00%	-0.408	
NZD/USD	0.7207	-0.10%	-0.10%	-0.260	
USD/CHF	0.8993	-0.01%	-0.14%	0.018	
USD/NOK	8.3066	-0.01%	-0.11%	1.003	
USD/SEK	8.2754	0.03%	-0.75%	0.345	
USD/CNY	6.4006	0.08%	0.01%	0.450	
Major EUR Cross Rate					
EUR/GBP	0.86005	0.08%	-0.48%	0.265	
EUR/CHF	1.0939	-0.01%	-0.09%	0.328	
EUR/JPY	133.16	-0.04%	-0.28%	-0.100	

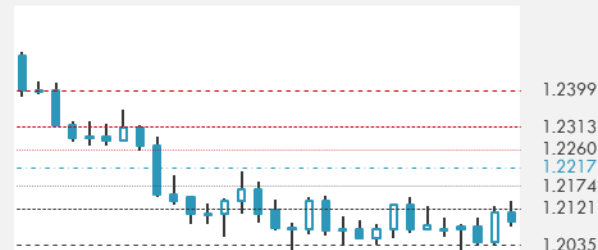
DISTANCE FROM 52 WEEKS LOW/HIGH


- A measure of dollar strength held near the lowest in almost five months as a weaker-than-expected reading on U.S. jobs data prompted investors to rethink the outlook for Federal Reserve tapering. The yen inched lower.
- The Korean won is poised to snap a three-day losing streak, while investors are also buying the nation's sovereign bonds.

Source: Bloomberg, Financial Times, Reuters

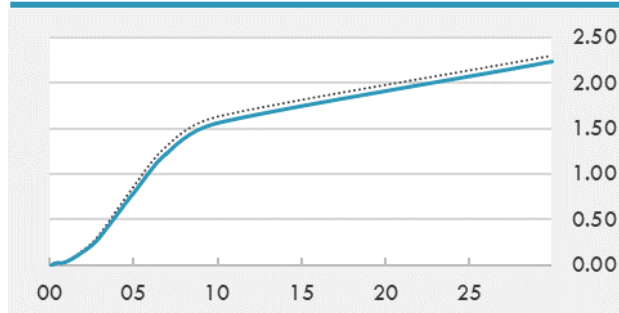
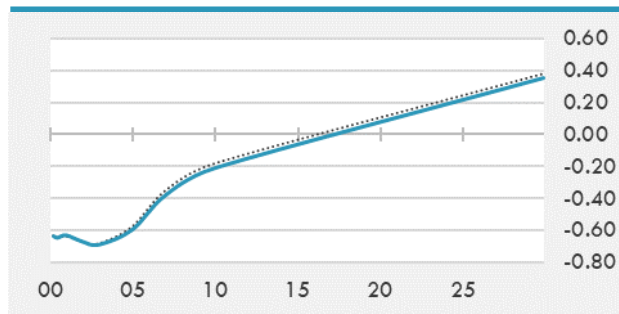
EUR/USD 30 DAYS SUPPORT & RESISTANCE

GBP/USD 30 DAYS SUPPORT & RESISTANCE

USD/JPY 30 DAYS SUPPORT & RESISTANCE

USD/CAD 30 DAYS SUPPORT & RESISTANCE


GLOBAL BOND INDICES

	Yield	ΔYield (in Bps)
Benchmark Indices		
US 10 Years Benchmark	1.5534	-0.072
EU 10 Years Benchmark	-0.213	-0.030
UK 10 Years Benchmark	0.79	-0.051
Sovereign Bonds		
US Treasury Bond	0.594	0
Eurozone Sovereign Bond	-0.428	0
Japan Sovereign Bond	-0.104	0
Corporate Bonds		
US Corporate TR	2.110	-0.050
US High Yield Bond TR	4.013	-0.038
EUR Aggregate Corporate TR	0.348	-0.018
EUR High Yield TR	2.972	-0.002
USD Emerging Market IG & HY	3.807	-0.029

US TREASURIES YIELD CURVE

EUR GENERIC YIELD CURVE


- Treasuries futures drift lower as Friday's squeeze fades and attention turns to supply.
- Aussie 10-year yields drop 6bps in catch-up move and hold gains as RBA buys A\$2b in 5-7y Aussie bonds.
- JGBs steady with signs of long-end swap flows edging the curve flatter.
- Italy's 10-year bond yield fell for a third week, the longest run of declines since February.
- Bunds and gilts rallied, underperforming Treasuries after the lower-than-forecast U.S. employment figure.

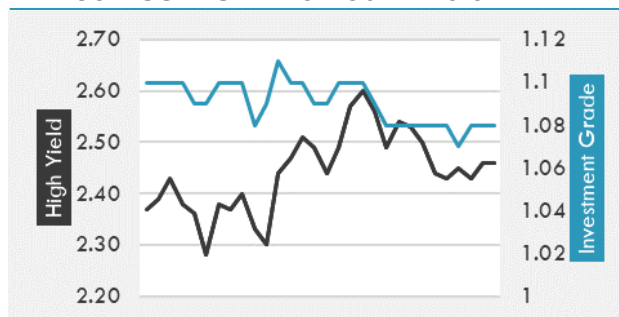
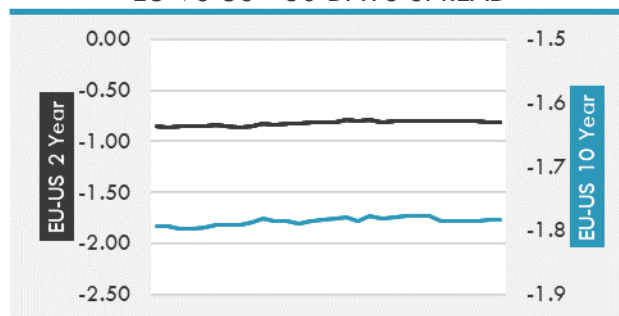
Source: Bloomberg, Financial Times, Economic times, Reuters

OVERNIGHT RATES - SWAPS

	Yield	ΔYield (in Bps)
3M USD LIBOR	0.128	-0.003
3M EUR EURIBOR	-0.546	-0.004
3M GBP LIBOR	0.078	0.001
3Y USD SWAP	0.417	-0.028
5Y USD SWAP	0.855	-0.063
10Y USD SWAP	1.528	-0.071
30Y USD SWAP	1.946	-0.065

FIXED INCOME SPREADS

	Spread	ΔSpread (in Bps)
USD 3M vs 10Y Spread	1.531	-0.072
USD 2Y vs 10Y Spread	1.403	-0.062
USD IG Spread	1.080	0.000
USD HY Spread	2.460	0.030
EU vs US 10Y Spread	-1.767	0.010
EU vs US 2Y Spread	-0.816	-0.013
EM vs Benchmark Spread	252.500	0.000

USD CORPORATES - 30 DAYS SPREAD

EU VS US - 30 DAYS SPREAD


GLOBAL COMMODITIES MARKET

	Last Price	Daily %
Commodity Index	94.86	0.18%

Energy

WTI Crude Future	69.35	-0.39%
Brent Crude Future	71.58	-0.43%
NYMEX Gasoline	220.3	-0.38%
NYMEX Heat Oil	211.5	-0.23%
ICE Gasoil	582.25	0.17%
NYMEX Natural Gas	3.098	0.03%

Precious Metals

Gold Spot \$/Oz	1885.57	-0.32%
Silver Spot \$/Oz	27.57	-0.80%
Platinum Spot \$/Oz	1167.5	-0.16%
Palladium Spot \$/Oz	2843.5	-0.08%
Gold Future	1887.8	-0.22%
Silver Future	27.7	-0.70%
Platinum Future	1166.2	0.15%
Palladium Future	2845	0.10%

Base Metals

LME Aluminum	2455	0.00%
LME Copper	9955	0.00%
LME Zinc	3011	0.00%
LME Nickel	18020	0.00%
LME Lead	2136	0.00%
LME Tin	30865	0.00%

Agricultural

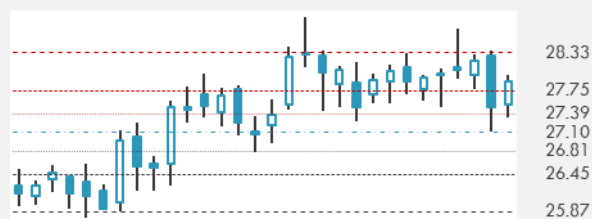
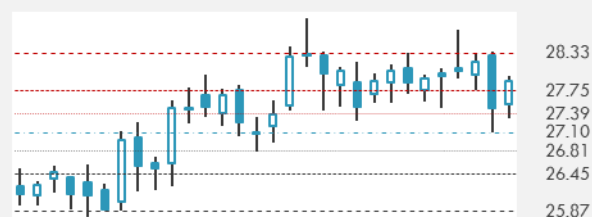
Corn CBT	696	1.94%
Wheat CBT	695.5	1.13%
Soybeans CBT	1464.25	2.00%
Bean Meal CBT	399.3	0.78%
Rough Rice CBT	13.28	-0.23%
MDE Palm Oil	4129	0.00%
Soybean CBT	66.18	2.92%
Coffee ICE	161.65	0.00%
Sugar #11 ICE	17.71	0.00%
Cotton #2 ICE	86.15	0.31%
Cocoa ICE	2452	0.00%
Ethanol CME	2.46	0.00%
Lumber CME	1284.2	0.00%
Orange Juice ICE	122.15	0.00%
Live Cattle CME	118.075	0.00%
Feeder Cattle CME	149.925	0.00%
Lean Hogs CME	120.6	0.00%

COMMODITY INDEX SUPPORT & RESISTANCE

WTI OIL 30 DAYS SUPPORT & RESISTANCE


- WTI crude bypassed \$70 a barrel for the first time since 2018, but a two-week surge in oil prices doesn't seem to be adding to inflation worries.
- Gold held a gain after U.S. jobs data missed expectations, easing concern that a strong economic rebound would stoke inflation.

Source: Bloomberg, Reuters

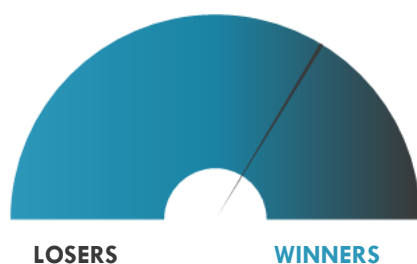
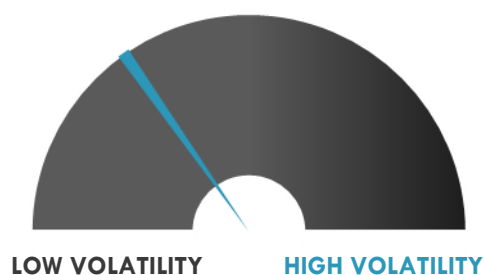
GOLD 30 DAYS SUPPORT & RESISTANCE

SILVER 30 DAYS SUPPORT & RESISTANCE


TOP 10 WINNERS

	Ticker	Last Price	Daily %
S&P 500 Stocks			
Biogen Inc	BIIB	286.14	+4.99%
Tesla Inc	TSLA	599.05	+4.58%
IPG Photonics Corp	IPGP	209.07	+4.03%
Take-Two Interactive	TTWO	184.45	+3.78%
Autodesk Inc	ADSK	284.78	+3.76%
NVIDIA Corp	NVDA	703.13	+3.59%
Twitter Inc	TWTR	59	+3.49%
Generac Holdings Inc	GNRC	327.4	+3.48%
Illumina Inc	ILMN	418.12	+3.35%
Monolithic Power Sys.	MPWR	347.03	+3.30%

TOP 10 LOSERS

	Ticker	Last Price	Daily %
S&P 500 Stocks			
Organon & Co	OGN	34.15	-7.70%
Mosaic Co/The	MOS	36.04	-3.61%
American Airlines	AAL	24.3	-2.53%
Martin Marietta	MLM	351.77	-2.17%
Under Armour Inc	UAA	21.72	-1.94%
Ulta Beauty Inc	ULTA	326.62	-1.90%
Kimco Realty Corp	KIM	21.75	-1.89%
Vulcan Materials Co	VMC	179.6	-1.85%
Lumen Technologies Inc	LUMN	14.75	-1.60%
Cigna Corp	CI	252.94	-1.57%

S&P 500 DISTRIBUTION

S&P VOLATILITY INDEX


- SPAC Reinvent Technology Partners Y rose 2.7% in after hours trading on a report that the company is in talks to take self driving startup Aurora Innovation public.
- Shares of Evofem BioScience went up 7.5% in after-hours trading after revealing in a SEC filing that two Morgan Stanley entities have a combined 10.1% stake.
- Cellerar Biosciences shares slid (-13.2%) after posting data from its mid-stage study of CLR 131 in patients with Waldenstrom's macroglobulinemia, a rare and incurable disease, at the American Society of Clinical Oncology Annual meeting.
- Liminal BioSciences (-3.1%) announced that the U.S. FDA has approved Ryplazim for the treatment of patients with plasminogen deficiency type 1.
- Nigeria says it has indefinitely suspended operations of Twitter (+3.7%) in the country - a reaction to the company suspending the account of that nation's president over a contentious tweet warning of increased violence.
- Northrop Grumman (+2.8%) hit an all-time high after Stifel upgrades shares to Buy from Hold with a \$475 price target, hiked from \$350, citing the defense company's "favorable alignment with areas of strategic longer-term importance" within the context of "a still-elevated global threat environment."
- EHang surged 25% after the company said it had a successful maiden unmanned test flight of its autonomous aerial vehicle EHang 216 in Japan.
- Chimerix (+3.8%) announced that the U.S. FDA has granted TEMBEXA tablets and oral suspension approval for the treatment of smallpox.

KEY ECONOMIC INDICATORS

Country	Event	Surv (M)	Actual	Prior	Time
Australia	ANZ Job Advertisements MoM	--	7.90%	4.70%	4:30
Australia	Foreign Reserves	--	--	6.15E+10	9:30
Austria	Wholesale Price Index MoM	--	--	0.60%	10:00
China	Trade Balance	5.08E+10	4.55E+10	4.29E+10	6:00
China	Exports YoY	32.10%	27.90%	32.30%	6:00
China	Imports YoY	53.50%	51.10%	43.10%	6:00
China	Foreign Reserves	3.22E+12	--	3.20E+12	
China	Exports YoY CNY	19.50%	18.10%	22.20%	6:00
China	Trade Balance CNY	2.76E+11	2.96E+11	2.77E+11	6:00
China	Imports YoY CNY	44.20%	39.50%	32.20%	6:00
Estonia	CPI YoY	--	3.60%	1.90%	8:00
Estonia	CPI MoM	--	0.90%	0.40%	8:00
Finland	Trade Balance	--	--	-2.97E+08	9:00
Germany	Factory Orders MoM	0.50%	--	3.00%	9:00
Germany	Factory Orders WDA YoY	77.80%	--	27.80%	9:00
Japan	Leading Index CI	102.9	103	102.5	8:00
Japan	Coincident Index	95.6	95.5	93	8:00
Spain	Industrial Output SA YoY	44.40%	--	12.40%	10:00
Spain	Industrial Output NSA YoY	--	--	15.10%	10:00
United States	Consumer Credit	2.05E+10	--	2.58E+10	22:00

Source: Bloomberg

Banque BEMO sal

Head Office - Private and Corporate Banking

Elias Sarkis Ave., Bemo Bldg , Ashrafieh - Lebanon
Tel: +961 1 200 505 Fax: +961 1 217 860

Research & Development research@bemobank.com

Elias Sarkis Ave., Bemo Bldg , Ashrafieh - Lebanon
Tel: +961 1 200 505 Fax: +961 1 217 860

Disclaimer:

This report is published for information purposes only. The information herein has been compiled from, or based upon sources considered to be reliable (Bloomberg, SeekingAlpha, DailyStar...), but we do not guarantee or assume responsibility for its completeness and accuracy. This document should not be construed as a solicitation to take part in any investment, or as constituting any representation or warranty on our part. This report is not to be relied upon in substitution for the exercise of specialists.

We may not have taken any steps to ensure that the securities referred to in this report are suitable for any particular investor. The investments and services contained or referred to herein are not purported to be exhaustive, any person considering an investment should seek specialist advice on the suitability of an investment.

Nothing in this report constitutes investment, legal, accounting or tax advice, or a representation that any investment or strategy is suitable or appropriate to your individual circumstances, or otherwise constitutes a personal recommendation. Clients understand that it is their responsibility to seek legal and/or tax advice regarding the legal and tax consequences of their investment transactions. The consequences of any action taken on the basis of information contained herein are solely the responsibility of the recipient.

Investment instruments are subject to risk, including possible loss of principal amount invested. Past performance should not be taken as an indication or guarantee of future performance, and no representation or warranty, express or implied, is made regarding future performance. The value of securities and financial instruments is subject to exchange rate fluctuation that may have a positive or adverse effect on the price or income of such securities or financial instruments. Some investments mentioned in this report may have a high level of volatility. High volatility investments may experience sudden and large falls in their value causing losses when that investment is realized. Some investments may not be readily realizable and it may be difficult to sell or realize those investments, similarly it may prove difficult to obtain reliable information about the value, or risks, to which such an investment is exposed.

This report may provide the addresses of websites or references. We have not reviewed any such site and takes no responsibility for the content contained therein. Such address or reference is provided solely for convenience and information. Accessing such website through this report shall be at the recipients own risk.