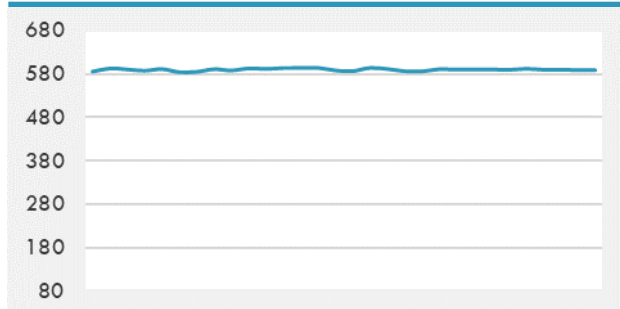
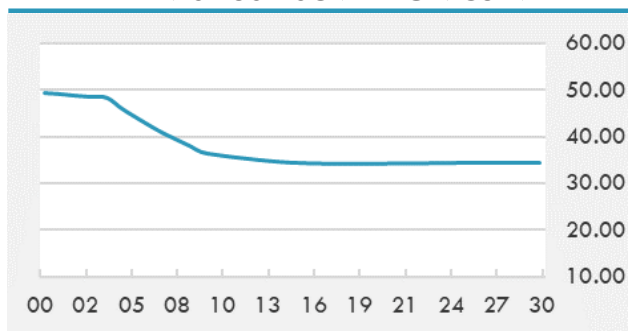


BEIRUT STOCK EXCHANGE

	Last	Daily %	YTD %	Dividend %
MSCI Lebanon	588.69	-0.24%	34.48%	
Development and Reconstruction				
Solidere A	24.77	-0.64%	33.89%	
Solidere B	24.93	1.01%	36.30%	
Banking				
Audi Listed	2.22	0.00%	81.97%	
BLC Listed	0.93	0.00%	0.00%	
BOB Listed	17.8	0.00%	0.00%	
Byblos Listed	0.93	0.00%	75.47%	
BEMO Listed	1.2	0.00%	0.00%	
BLOM Listed	3.3	0.00%	59.42%	
Trading				
RYMCO	3.19	0.00%	0.00%	
Industrial				
Holcim	18.01	0.00%	24.21%	
Ciments Blancs	4.5	0.00%	9.76%	

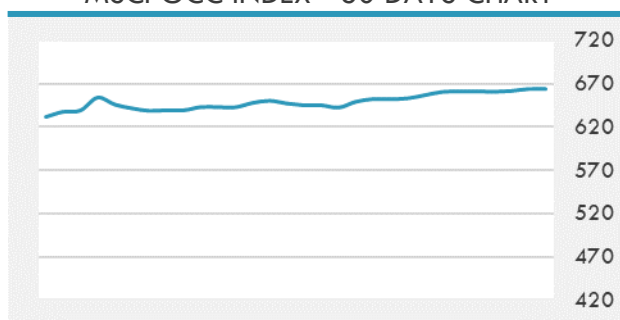
MSCI LEBANON INDEX - 30 DAYS CHART

LEBANESE USD SOVEREIGN CURVE


- The UAE stock markets have closed Wednesday's trading session on a varied note. The benchmark index of the Dubai Financial Market went down 0.12% to settle at 2,831.93 points by the end of Wednesday's session. As for the Abu Dhabi Securities Exchange (ADX), the main index inched up 0.61% to end Wednesday's trading session at 6,711.3 points.
- Hub71 has partnered with the Abu Dhabi Investment Office (ADIO) to grant early-stage tech startups a AED 10 million (\$2.7 million) support.

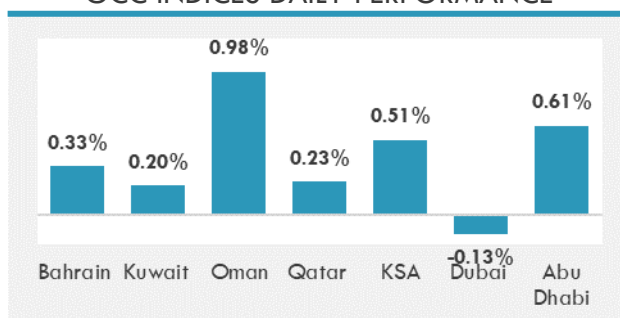
Source: Daily Star, Gulf Business, Mubasher, Bloomberg, Businessnews LB

GCC EQUITY INDICES

	Last Price	Daily %	YTD %
Bahrain	1545.85	0.33%	3.76%
Kuwait	6302.94	0.20%	13.65%
Oman	4019.84	0.98%	9.87%
Qatar	10691.13	0.23%	2.45%
KSA	10790.24	0.51%	24.18%
Dubai	2831.93	-0.13%	13.64%
Abu Dhabi	6711.3	0.61%	33.02%

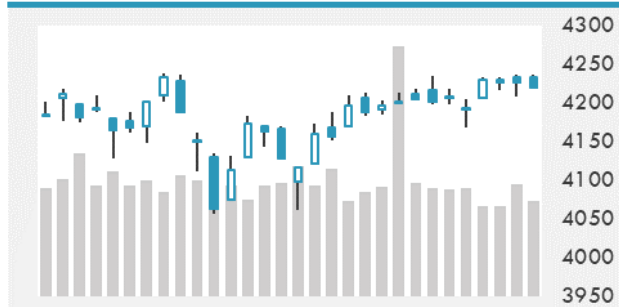
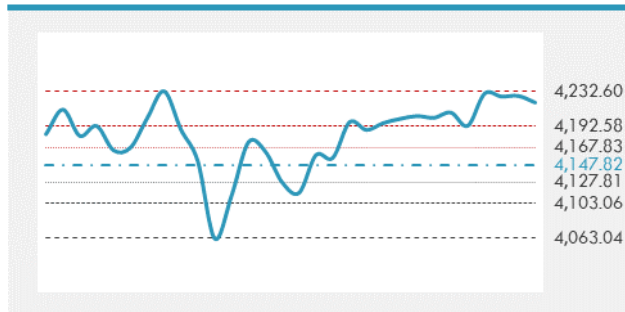
MSCI GCC INDEX - 30 DAYS CHART

LOCAL/GCC FOREIGN EXCHANGE

	Cross	Last Price
Lebanese Pound Spot	USD/LBP	1515.5
Bahraini Dinar Spot	USD/BHD	0.37701
Kuwaiti Dinar Spot	USD/KWD	0.30075
Omani Rial Spot	USD/OMR	0.385
Qatari Riyal Spot	USD/QAR	3.6415
Saudi Riyal Spot	USD/SAR	3.7505
UAE Dirham Spot	USD/AED	3.673

GCC INDICES DAILY PERFORMANCE


UNITED STATES EQUITY MARKET INDICES

	Last Price	Daily %	YTD %	Δ10D Vol
Major Indices				
Dow Jones	34447.14	0.00%	12.55%	0.89%
S&P 500	4219.55	0.00%	12.34%	0.18%
Nasdaq	13911.75	0.00%	7.94%	-0.14%
Sectors Indices				
Discretionary	1372.46	0.00%	5.37%	-0.81%
Staples	722.05	0.00%	3.70%	0.22%
Energy	415.56	0.00%	45.23%	1.42%
Financials	625.81	0.00%	27.60%	2.41%
Healthcare	1434.66	0.00%	8.36%	1.38%
Industrials	875.44	0.00%	16.80%	1.82%
IT	2457.32	0.00%	7.25%	-0.02%
Materials	540.58	0.00%	18.62%	0.66%
Com. Services	259.06	0.00%	16.74%	-0.27%
Utilities	330.82	0.00%	3.68%	1.32%
Real Estate	282.61	0.00%	24.01%	0.07%

S&P 500 INDEX - 30 DAYS CHART

S&P 500 SUPPORT & RESISTANCE


- U.S. stock-index futures held near all-time highs as investors awaited Thursday's inflation data to gauge the direction of monetary policy.
- European shares advanced slightly to a new historical high as investors awaited key economic data and the European Central Bank policy meeting this week for signs of whether the recovery is becoming overheated.
- Asian equities rose by the most in a week, as Chinese and U.S. commerce ministers agreed to push forward trade and investment ties.

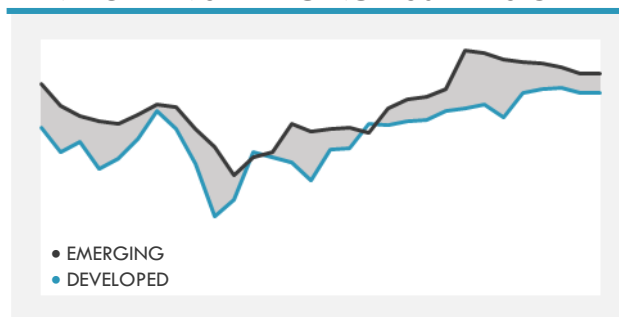
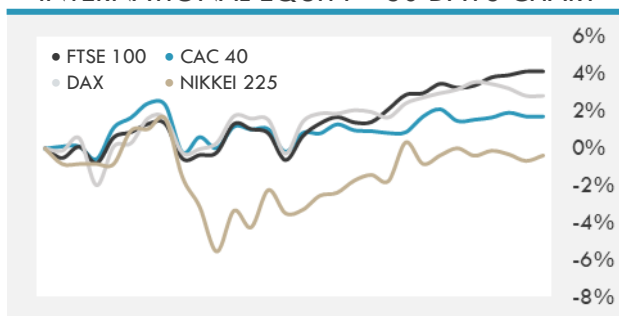
Source: Bloomberg, Financial Times, Reuters

INTERNATIONAL MARKETS INDICES

	Last Price	Daily %	YTD %	Δ10D Vol
World	1747.81	0.00%	10.72%	0.29%
Developed	2996.64	0.00%	11.40%	0.22%
Emerging	1372.8	0.00%	6.31%	0.47%
Frontier	2596.83	0.00%	0.19%	-1.59%
Europe	150.45	0.00%	13.89%	0.03%
Latin America	2672.31	0.00%	9.00%	0.67%
Asia Pacific	208.87	0.00%	4.48%	0.58%

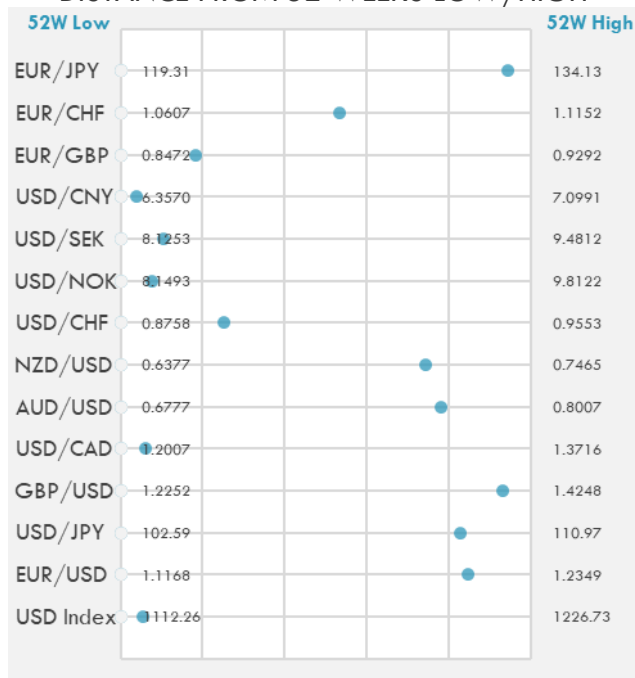
INTERNATIONAL EQUITY INDICES

	Last Price	Daily %	YTD %	Δ10D Vol
EuroStoxx 50	4096.85	0.00%	15.32%	0.04%
FTSE 100	7081.01	0.00%	9.60%	0.18%
CAC 40	6563.45	0.00%	18.23%	-0.44%
DAX	15581.14	0.00%	13.58%	0.17%
Swiss SMI	11788.1	0.00%	10.13%	0.89%
Nikkei 225	28946.32	0.30%	5.47%	0.03%
CSI 300	5298.5	1.18%	1.67%	-0.38%

DEVELOPED VS EMERGING - 30 DAYS CHART

INTERNATIONAL EQUITY - 30 DAYS CHART


FOREIGN EXCHANGE MARKET

	Last Price	Daily %	Δ10D	Vol 25	ΔRR
Major USD Cross Rate					
USD Index	1118.4	-0.02%	-0.01%	-	
EUR/USD	1.2167	-0.11%	0.02%	-0.008	
USD/JPY	109.54	-0.08%	0.00%	-0.078	
GBP/USD	1.4111	-0.05%	-0.01%	-0.295	
USD/CAD	1.2112	0.01%	0.00%	0.283	
AUD/USD	0.7738	0.09%	-0.34%	-0.360	
NZD/USD	0.7186	0.08%	-0.26%	-0.240	
USD/CHF	0.8957	0.00%	-0.46%	0.010	
USD/NOK	8.2757	-0.03%	-0.27%	1.023	
USD/SEK	8.2686	0.09%	-0.37%	0.323	
USD/CNY	6.3849	-0.04%	-0.34%	0.400	
Major EUR Cross Rate					
EUR/GBP	0.86226	-0.07%	0.05%	0.273	
EUR/CHF	1.08981	-0.12%	-0.75%	0.303	
EUR/JPY	133.28	-0.19%	0.10%	-0.118	

DISTANCE FROM 52 WEEKS LOW/HIGH


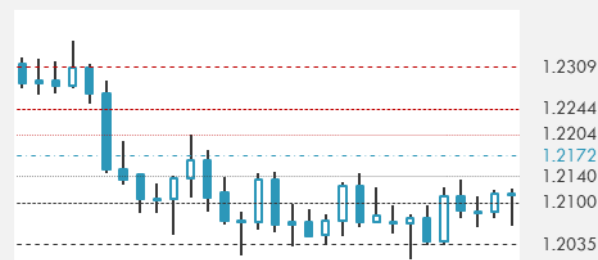
- A gauge of the dollar halted a two-day advance before U.S. inflation data which may determine when the Federal Reserve starts withdrawing stimulus.
- China's offshore yuan reversed losses on the prospect of improving trade and investment cooperation between Beijing and Washington.
- The pound rose on Wednesday, leading gains among Group-of-10 peers amid a broadly weaker dollar, as Bank of England Chief Economist Andy Haldane said the economy is going "gangbusters" and the central bank may need to start turning off the monetary policy tap.

Source: Bloomberg, Financial Times, Reuters

EUR/USD 30 DAYS SUPPORT & RESISTANCE

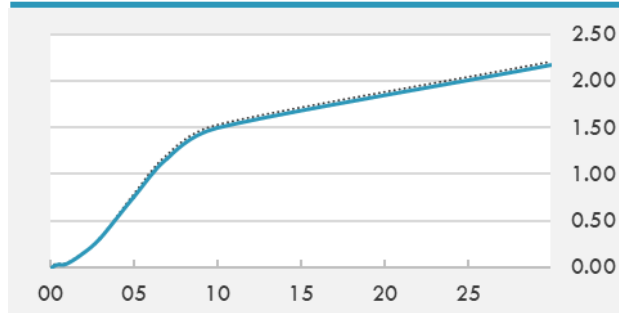
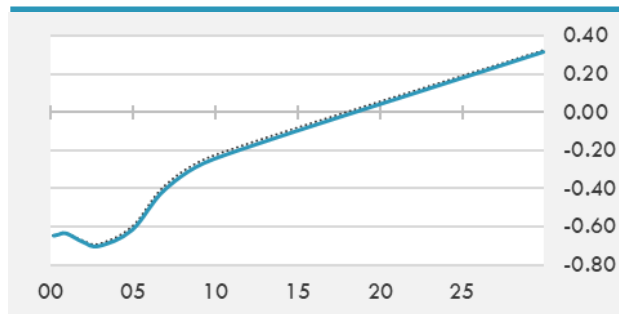
GBP/USD 30 DAYS SUPPORT & RESISTANCE

USD/JPY 30 DAYS SUPPORT & RESISTANCE

USD/CAD 30 DAYS SUPPORT & RESISTANCE


GLOBAL BOND INDICES

	Yield	ΔYield (in Bps)
Benchmark Indices		
US 10 Years Benchmark	1.4908	-0.042
EU 10 Years Benchmark	-0.244	-0.020
UK 10 Years Benchmark	0.73	-0.040
Sovereign Bonds		
US Treasury Bond	0.594	0
Eurozone Sovereign Bond	-0.428	0
Japan Sovereign Bond	-0.104	0
Corporate Bonds		
US Corporate TR	2.067	-0.028
US High Yield Bond TR	3.909	-0.033
EUR Aggregate Corporate TR	0.318	-0.020
EUR High Yield TR	2.936	-0.016
USD Emerging Market IG & HY	3.753	-0.023

US TREASURIES YIELD CURVE

EUR GENERIC YIELD CURVE


- Treasuries traders are turning up their noses at the prospect of a higher-than-expected U.S. inflation number with benchmark yields breaking below their recent trading range amid a shakeout of short positions.
- The European Central Bank is gearing up for a major decision on asset purchases Thursday. David Powell, senior euro-area economist at Bloomberg, expected policy makers to opt for another three months of “significantly higher” purchases through the Pandemic Emergency Purchase Program.

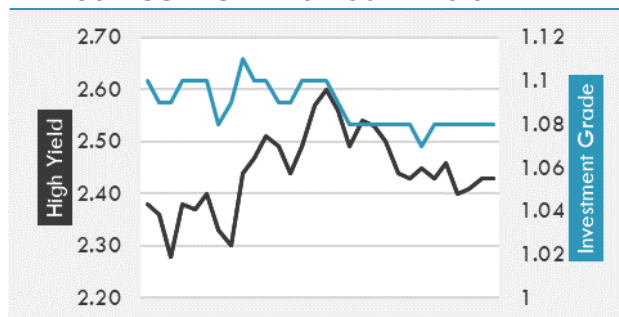
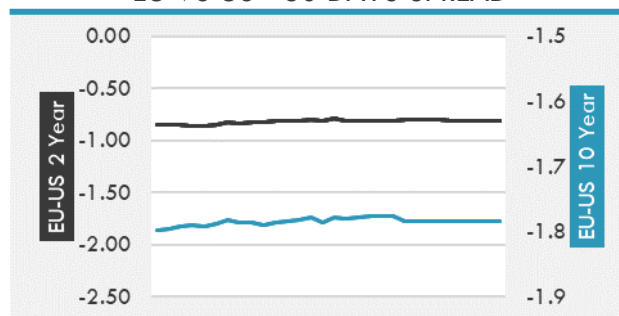
Source: Bloomberg, Financial Times, Economic times, Reuters

OVERNIGHT RATES - SWAPS

	Yield	ΔYield (in Bps)
3M USD LIBOR	0.128	0.000
3M EUR EURIBOR	-0.543	0.000
3M GBP LIBOR	0.081	0.000
3Y USD SWAP	0.402	-0.011
5Y USD SWAP	0.820	-0.024
10Y USD SWAP	1.465	-0.044
30Y USD SWAP	1.874	-0.051

FIXED INCOME SPREADS

	Spread	ΔSpread (in Bps)
USD 3M vs 10Y Spread	1.464	-0.041
USD 2Y vs 10Y Spread	1.332	-0.044
USD IG Spread	1.080	0.000
USD HY Spread	2.430	0.020
EU vs US 10Y Spread	-1.767	0.000
EU vs US 2Y Spread	-0.816	0.000
EM vs Benchmark Spread	252.800	0.800

USD CORPORATES - 30 DAYS SPREAD

EU VS US - 30 DAYS SPREAD


GLOBAL COMMODITIES MARKET

	Last Price	Daily %
Commodity Index	94.63	-0.19%

Energy

WTI Crude Future	69.55	-0.59%
Brent Crude Future	71.8	-0.58%
NYMEX Gasoline	219.19	-0.48%
NYMEX Heat Oil	211.83	-0.53%
ICE Gasoil	581	-0.64%
NYMEX Natural Gas	3.156	0.86%

Precious Metals

Gold Spot \$/Oz	1887.22	-0.07%
Silver Spot \$/Oz	27.7458	-0.10%
Platinum Spot \$/Oz	1145.98	-0.63%
Palladium Spot \$/Oz	2782.49	0.08%
Gold Future	1889.3	-0.33%
Silver Future	27.855	-0.52%
Platinum Future	1143.9	-0.69%
Palladium Future	2783	0.37%

Base Metals

LME Aluminum	2459	0.00%
LME Copper	9979	0.00%
LME Zinc	3019	0.00%
LME Nickel	18136	0.00%
LME Lead	2199	0.00%
LME Tin	31209	0.00%

Agricultural

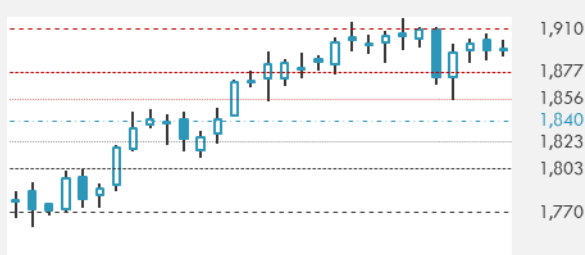
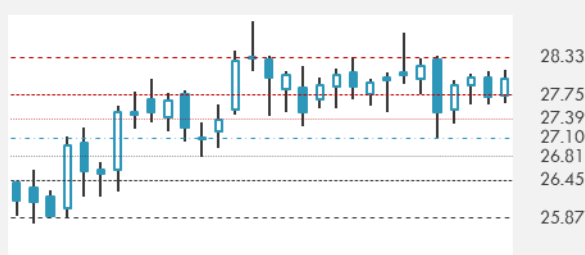
Corn CBT	610.75	0.16%
Wheat CBT	680	-0.33%
Soybeans CBT	1453	0.33%
Bean Meal CBT	393.3	-0.13%
Rough Rice CBT	13.065	-0.15%
MDE Palm Oil	3894	0.59%
Soybean CBT	66.64	0.94%
Coffee ICE	159.3	0.00%
Sugar #11 ICE	17.75	0.00%
Cotton #2 ICE	86.92	-0.48%
Cocoa ICE	2392	0.00%
Ethanol CME	2.46	0.00%
Lumber CME	1164.2	0.00%
Orange Juice ICE	128.65	0.00%
Live Cattle CME	118.275	0.00%
Feeder Cattle CME	148.275	0.00%
Lean Hogs CME	118.75	0.00%

COMMODITY INDEX SUPPORT & RESISTANCE

WTI OIL 30 DAYS SUPPORT & RESISTANCE


- Oil extended declines as rising U.S. fuel stockpiles punctured the optimism on demand that drove crude to the highest since 2018 this week.
- Gold steadied as investors awaited Thursday's U.S. inflation report that may provide clues on the Federal Reserve's monetary policy path.

Source: Bloomberg, Reuters

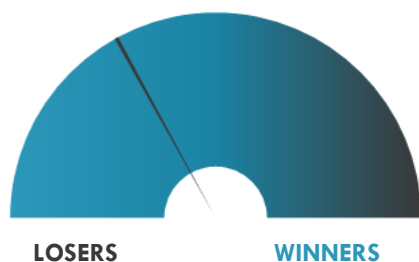
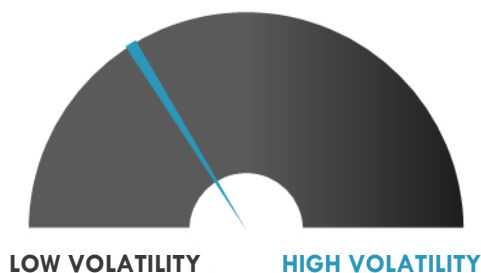
GOLD 30 DAYS SUPPORT & RESISTANCE

SILVER 30 DAYS SUPPORT & RESISTANCE


TOP 10 WINNERS

	Ticker	Last Price	Daily %
S&P 500 Stocks			
Catalent Inc	CTLT	107.3	+3.05%
Regeneron Pharma.	REGN	521.85	+3.05%
Sempra Energy	SRE	139.44	+2.95%
Biogen Inc	BIIB	406.94	+2.93%
Fox Corp	FOXA	37.64	+2.87%
Bristol-Myers Squibb	BMY	65.4	+2.67%
Fox Corp	FOX	36.03	+2.47%
Pfizer Inc	PFE	39.81	+2.47%
Eli Lilly & Co	LLY	226	+2.40%
Merck & Co Inc	MRK	74.04	+2.27%

TOP 10 LOSERS

	Ticker	Last Price	Daily %
S&P 500 Stocks			
DISH Network Corp	DISH	40.44	-7.21%
Campbell Soup Co	CPB	45.92	-6.51%
Brown-Forman Corp	BF/B	75.19	-5.65%
United Parcel Service	UPS	201.06	-4.15%
Under Armour Inc	UAA	21.4	-3.65%
Under Armour Inc	UA	18.62	-3.57%
Lincoln National Corp	LNC	68.28	-3.52%
FedEx Corp	FDX	293.11	-3.13%
Norwegian Cruise Line	NCLH	32.66	-3.11%
Charles Schwab Corp	SCHW	72.85	-3.02%

S&P 500 DISTRIBUTION

S&P VOLATILITY INDEX


- Asana is 5.2% higher postmarket after its chief executive officer disclosed buying half a million shares.
- Enthusiast Gaming's stock is down 7.7% in after-hours trading following the launch of marketed offering of 8M shares in the U.S. and Canada.
- Livent -3.9% after saying it commenced a public offering of 12.5M common shares, with an underwriters option to purchase up to an additional 1.875M shares.
- Celsius Holdings announces stock offering of 6,518,267 shares, which includes secondary offering of 5,518,267 shares offered by selling stockholders and remaining 1,000,000 shares in the company's direct offering.
- Manitowoc -2.3% post-market after saying it experienced a cybersecurity incident, resulting in a systems outage and causing delays and disruptions to its business.
- MediWound completes patient enrollment for the interim assessment of its U.S. EscharEx Phase 2 study for the treatment of venous leg ulcers.
- RH reports revenue growth of 78% in Q1 against the soft lockdown comparable and a 101% increase in total company demand. RH core demand was up 109% during the quarter.
- Verint reports first quarter beats with revenue up 9% Y/Y to \$201M and EPS of \$0.44, which was \$0.08 better than analysts expected.
- GameStop reports sales rose 25.1% to \$1.28B in Q1 and adjusted EBITDA was -\$0.7M vs. -\$75.5M a year ago.

KEY ECONOMIC INDICATORS

Country	Event	Surv (M)	Actual	Prior	Time
Austria	Industrial Prod. WDA YoY	--	--	12.70%	10:00
Austria	Industrial Production SA MoM	--	--	2.40%	10:00
China	Money Supply M2 YoY	8.10%	--	8.10%	
Estonia	Unemployment Rate	--	--	8.50%	
Eurozone	ECB Main Refinancing Rate	0.00%	--	0.00%	14:45
Eurozone	ECB Deposit Facility Rate	-0.50%	--	-0.50%	14:45
Eurozone	ECB Marginal Lending Facility	0.25%	--	0.25%	14:45
France	Industrial Production MoM	0.60%	--	0.80%	9:45
France	Industrial Production YoY	44.90%	--	13.70%	9:45
Greece	Industrial Production YoY	--	--	5.50%	12:00
Greece	CPI YoY	--	--	-0.30%	12:00
Ireland	CPI EU Harmonized YoY	--	--	1.10%	13:00
Ireland	CPI YoY	--	--	1.10%	13:00
Italy	Industrial Production MoM	0.30%	--	-0.10%	11:00
Japan	PPI YoY	4.50%	4.90%	3.60%	2:50
United States	Initial Jobless Claims	370000	--	385000	15:30
United States	CPI MoM	0.50%	--	0.80%	15:30
United States	Real Avg Weekly Earnings YoY	--	--	-1.40%	15:30
United States	CPI Ex Food and Energy MoM	0.50%	--	0.90%	15:30
United States	Monthly Budget Statement	-2.50E+11	--	-2.26E+11	21:00

Source: Bloomberg

Banque BEMO sal

Head Office - Private and Corporate Banking

Elias Sarkis Ave., Bemo Bldg , Ashrafieh - Lebanon
Tel: +961 1 200 505 Fax: +961 1 217 860

Research & Development research@bemobank.com

Elias Sarkis Ave., Bemo Bldg , Ashrafieh - Lebanon
Tel: +961 1 200 505 Fax: +961 1 217 860

Disclaimer:

This report is published for information purposes only. The information herein has been compiled from, or based upon sources considered to be reliable (Bloomberg, SeekingAlpha, DailyStar...), but we do not guarantee or assume responsibility for its completeness and accuracy. This document should not be construed as a solicitation to take part in any investment, or as constituting any representation or warranty on our part. This report is not to be relied upon in substitution for the exercise of specialists.

We may not have taken any steps to ensure that the securities referred to in this report are suitable for any particular investor. The investments and services contained or referred to herein are not purported to be exhaustive, any person considering an investment should seek specialist advice on the suitability of an investment.

Nothing in this report constitutes investment, legal, accounting or tax advice, or a representation that any investment or strategy is suitable or appropriate to your individual circumstances, or otherwise constitutes a personal recommendation. Clients understand that it is their responsibility to seek legal and/or tax advice regarding the legal and tax consequences of their investment transactions. The consequences of any action taken on the basis of information contained herein are solely the responsibility of the recipient.

Investment instruments are subject to risk, including possible loss of principal amount invested. Past performance should not be taken as an indication or guarantee of future performance, and no representation or warranty, express or implied, is made regarding future performance. The value of securities and financial instruments is subject to exchange rate fluctuation that may have a positive or adverse effect on the price or income of such securities or financial instruments. Some investments mentioned in this report may have a high level of volatility. High volatility investments may experience sudden and large falls in their value causing losses when that investment is realized. Some investments may not be readily realizable and it may be difficult to sell or realize those investments, similarly it may prove difficult to obtain reliable information about the value, or risks, to which such an investment is exposed.

This report may provide the addresses of websites or references. We have not reviewed any such site and takes no responsibility for the content contained therein. Such address or reference is provided solely for convenience and information. Accessing such website through this report shall be at the recipients own risk.