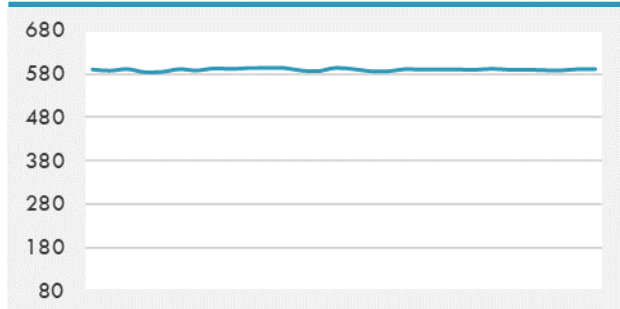
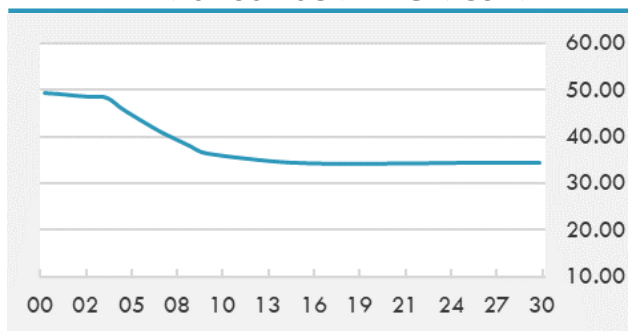


BEIRUT STOCK EXCHANGE

	Last	Daily %	YTD %	Dividend %
MSCI Lebanon	591.38	0.55%	35.10%	
Development and Reconstruction				
Solidere A	24.92	0.69%	34.70%	
Solidere B	24.93	0.12%	36.30%	
Banking				
Audi Listed	2.22	0.00%	81.97%	
BLC Listed	0.93	0.00%	0.00%	
BOB Listed	17.8	0.00%	0.00%	
Byblos Listed	0.93	0.00%	75.47%	
BEMO Listed	1.2	0.00%	0.00%	
BLOM Listed	3.38	2.42%	63.29%	
Trading				
RYMCO	3.19	0.00%	0.00%	
Industrial				
Holcim	18.01	0.00%	24.21%	
Ciments Blancs	4.5	0.00%	9.76%	

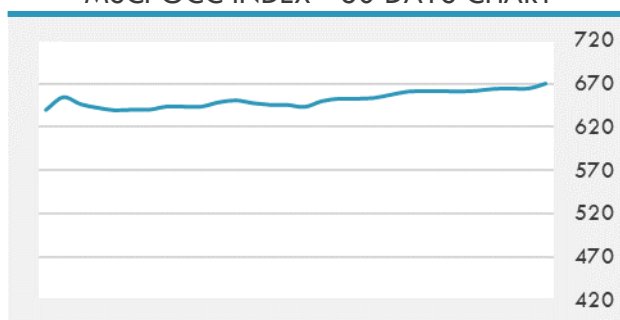
MSCI LEBANON INDEX - 30 DAYS CHART

LEBANESE USD SOVEREIGN CURVE


- The Tadawul All Share Index of the Saudi Exchange closed Sunday at 10,897.47 points, after rising by 0.94% or 101.14 points.
- Stock markets in the UAE closed lower on Sunday, amid increased selling pressures on blue-chip stocks. The main index of the Dubai Financial Market finished marginally lower by 0.08% at 2,842.33 points. The general index of the Abu Dhabi Securities Exchange plunged by 0.21% to the level of 6,701.88 points, after 227.29 million shares were traded at a total value of AED 1.36 billion.

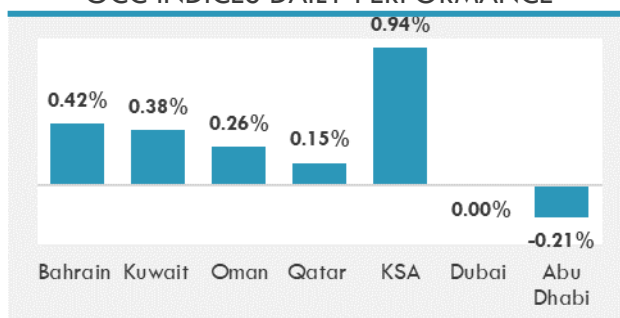
Source: Daily Star, Gulf Business, Mubasher, Bloomberg, Businessnews LB

GCC EQUITY INDICES

	Last Price	Daily %	YTD %
Bahrain	1546.07	0.42%	4.22%
Kuwait	6305.24	0.38%	14.12%
Oman	4040.49	0.26%	10.43%
Qatar	10739.48	0.15%	2.91%
KSA	10897.47	0.94%	25.41%
Dubai	2842.33	0.00%	14.06%
Abu Dhabi	6701.88	-0.21%	32.83%

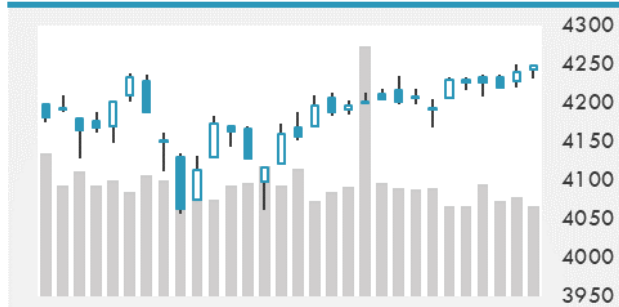
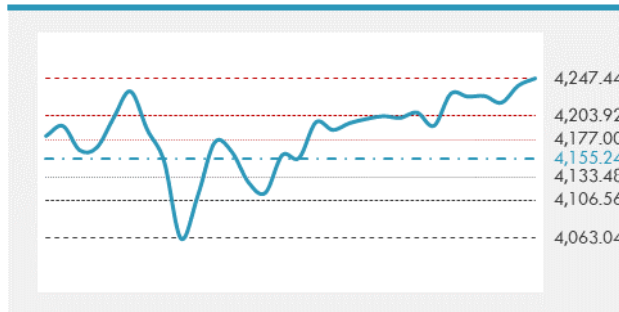
MSCI GCC INDEX - 30 DAYS CHART

LOCAL/GCC FOREIGN EXCHANGE

	Cross	Last Price
Lebanese Pound Spot	USD/LBP	1515.5
Bahraini Dinar Spot	USD/BHD	0.37699
Kuwaiti Dinar Spot	USD/KWD	0.30085
Omani Rial Spot	USD/OMR	0.38501
Qatari Riyal Spot	USD/QAR	3.6412
Saudi Riyal Spot	USD/SAR	3.7503
UAE Dirham Spot	USD/AED	3.673

GCC INDICES DAILY PERFORMANCE


UNITED STATES EQUITY MARKET INDICES

	Last Price	Daily %	YTD %	Δ10D Vol
Major Indices				
Dow Jones	34479.6	0.00%	12.65%	-0.12%
S&P 500	4247.44	0.00%	13.08%	0.01%
Nasdaq	14069.42	0.00%	9.16%	-0.02%
Sectors Indices				
Discretionary	1388.59	0.00%	6.60%	0.20%
Staples	727.42	0.00%	4.47%	0.00%
Energy	413.47	0.00%	44.50%	0.53%
Financials	622.55	0.00%	26.94%	0.87%
Healthcare	1448.24	0.00%	9.38%	0.78%
Industrials	872.96	0.00%	16.47%	0.27%
IT	2489.51	0.00%	8.65%	0.11%
Materials	539.48	0.00%	18.38%	0.37%
Com. Services	260.93	0.00%	17.58%	-0.29%
Utilities	333.99	0.00%	4.68%	-0.13%
Real Estate	283.61	0.00%	24.44%	2.15%

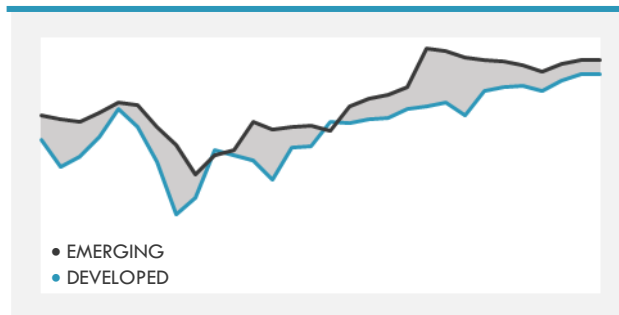
S&P 500 INDEX - 30 DAYS CHART

S&P 500 SUPPORT & RESISTANCE


- U.S. index futures were little changed Friday, after the S&P 500 Index closed at a record on Thursday as investors bet monetary policy will remain loose even after a report showing consumer prices increased more than forecast last month.
- European stocks extended a record high as investors weighed prospects of continued policy support in spite of higher inflation.
- Asian stocks traded little changed as a number of the region's markets were shut for a holiday, with investors awaiting the outcome of a key Federal Reserve meeting later in the week.

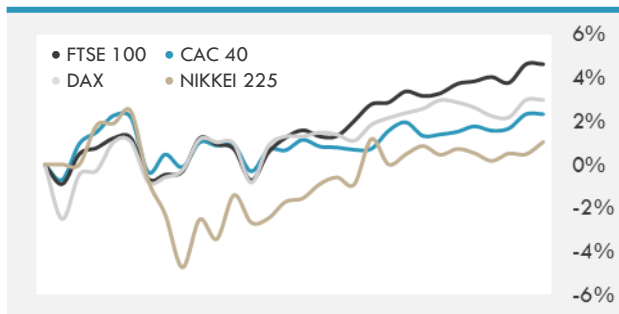
Source: Bloomberg, Financial Times, Reuters

INTERNATIONAL MARKETS INDICES

	Last Price	Daily %	YTD %	Δ10D Vol
World	1757.46	0.00%	11.34%	0.00%
Developed	3012.67	0.00%	11.99%	-0.16%
Emerging	1381.99	0.00%	7.03%	-2.02%
Frontier	2608.37	0.00%	0.64%	0.06%
Europe	151.55	0.00%	14.72%	-1.07%
Latin America	2645.96	0.00%	7.92%	1.38%
Asia Pacific	209.82	0.00%	4.95%	-0.34%

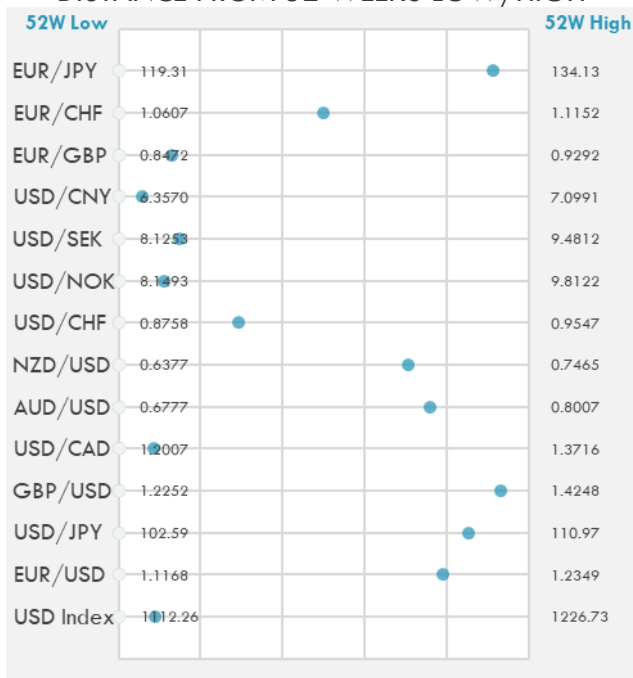
DEVELOPED VS EMERGING - 30 DAYS CHART

INTERNATIONAL EQUITY INDICES

	Last Price	Daily %	YTD %	Δ10D Vol
EuroStoxx 50	4126.7	0.00%	16.16%	-1.27%
FTSE 100	7134.06	0.00%	10.43%	0.59%
CAC 40	6600.66	0.00%	18.90%	-0.43%
DAX	15693.27	0.00%	14.39%	-0.28%
Swiss SMI	11841.3	0.00%	10.63%	-2.48%
Nikkei 225	29110.66	0.56%	6.07%	-2.37%
CSI 300	5224.7	0.00%	0.26%	0.65%

INTERNATIONAL EQUITY - 30 DAYS CHART


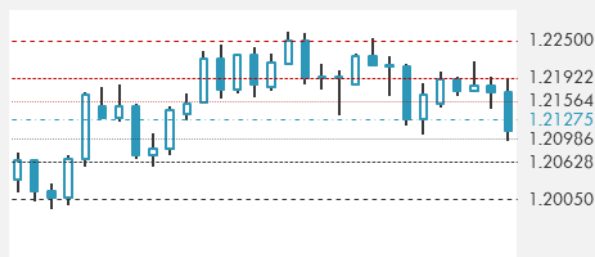
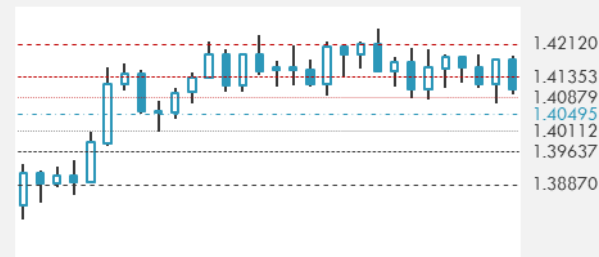
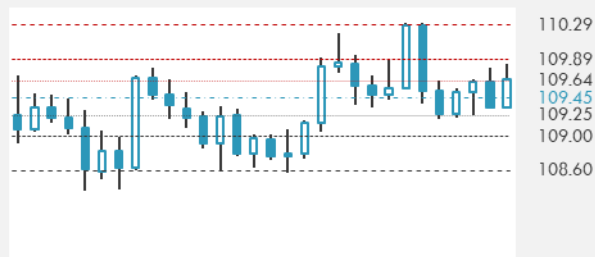
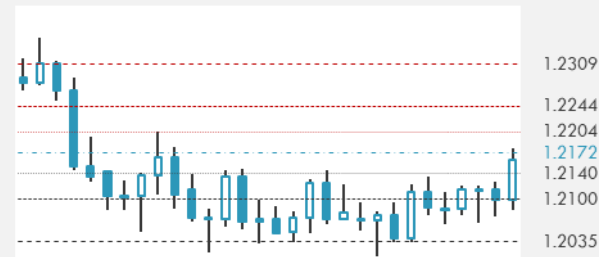
FOREIGN EXCHANGE MARKET

	Last Price	Daily %	Δ10D	Vol 25	ΔRR
Major USD Cross Rate					
USD Index	1122.61	0.03%	0.00%	-	
EUR/USD	1.2103	-0.05%	0.00%	-0.155	
USD/JPY	109.75	0.08%	-0.02%	-0.040	
GBP/USD	1.411	0.02%	-0.40%	-0.263	
USD/CAD	1.2151	-0.06%	0.06%	0.373	
AUD/USD	0.771	0.03%	-0.15%	-0.328	
NZD/USD	0.7144	0.20%	0.23%	-0.230	
USD/CHF	0.8990	0.08%	-0.09%	0.125	
USD/NOK	8.3358	-0.04%	-0.02%	1.105	
USD/SEK	8.3248	0.07%	-0.22%	0.308	
USD/CNY	6.3987	0.00%	0.00%	0.350	
Major EUR Cross Rate					
EUR/GBP	0.85773	-0.08%	-0.58%	0.300	
EUR/CHF	1.08795	0.05%	-0.08%	0.268	
EUR/JPY	132.82	0.02%	-0.01%	-0.140	

DISTANCE FROM 52 WEEKS LOW/HIGH


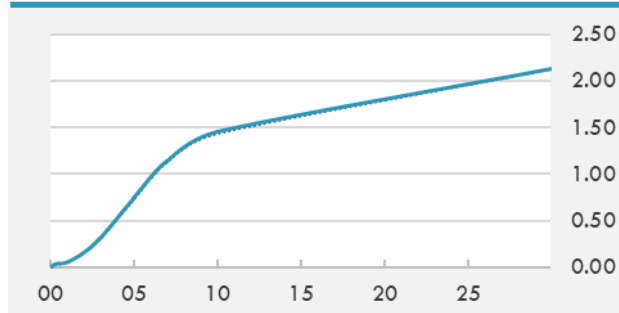
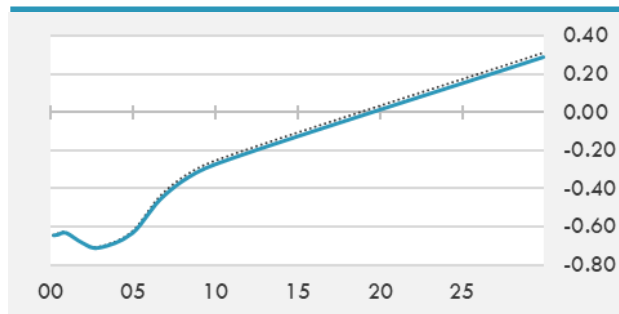
- A gauge of the dollar rose as U.S. yields edged higher, with players awaiting a Federal Reserve meeting this week for clues on the timing of any withdrawal in stimulus.
- Most Group-of-10 currencies traded in a narrow range with markets in Hong Kong, China, and Australia shut for holidays. The New Zealand dollar was the sole gainer against the greenback, while Norway's krone underperformed.
- The yen trades in a narrow range with the focus on this week's Fed policy meeting and potential clues about when it will start to taper debt purchases.

Source: Bloomberg, Financial Times, Reuters

EUR/USD 30 DAYS SUPPORT & RESISTANCE

GBP/USD 30 DAYS SUPPORT & RESISTANCE

USD/JPY 30 DAYS SUPPORT & RESISTANCE

USD/CAD 30 DAYS SUPPORT & RESISTANCE


GLOBAL BOND INDICES

	Yield	ΔYield (in Bps)
Benchmark Indices		
US 10 Years Benchmark	1.4518	0.020
EU 10 Years Benchmark	-0.274	-0.018
UK 10 Years Benchmark	0.708	-0.039
Sovereign Bonds		
US Treasury Bond	0.594	0
Eurozone Sovereign Bond	-0.428	0
Japan Sovereign Bond	-0.104	0
Corporate Bonds		
US Corporate TR	2.039	0.005
US High Yield Bond TR	3.877	-0.016
EUR Aggregate Corporate TR	0.303	-0.015
EUR High Yield TR	2.909	-0.015
USD Emerging Market IG & HY	3.743	-0.009

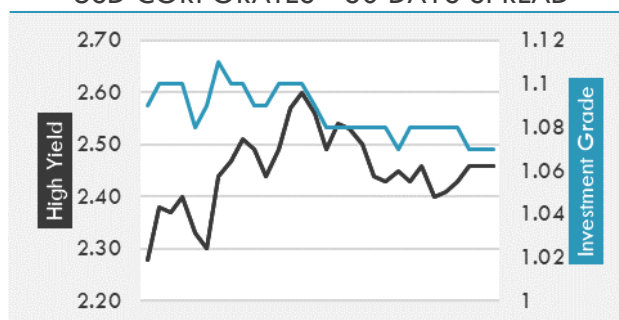
US TREASURIES YIELD CURVE

EUR GENERIC YIELD CURVE


- Treasury futures are little changed from the open with a light calendar Monday, though retail sales, 20-year supply and FOMC decision are due later this week.
- Aussie bonds are closed Monday, though RBA minutes are due Tuesday, and unemployment report is on Thursday, the last reading before the RBA's July meeting where decisions on QE and yield-curve control are due. BOJ policy decision and CPI are both due on Friday. There are no conventional bond auctions in Japan this week.
- Bunds trim declines after the ECB maintains a significantly higher bond buying pace.

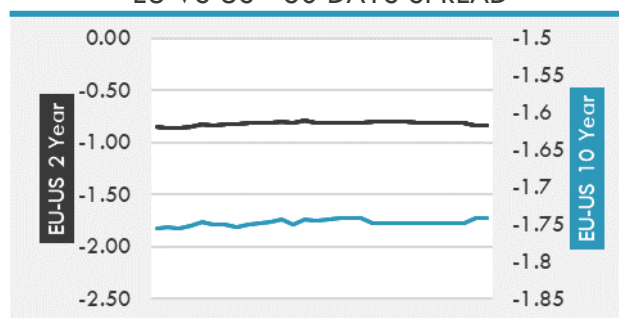
Source: Bloomberg, Financial Times, Economic times, Reuters

OVERNIGHT RATES - SWAPS

	Yield	ΔYield (in Bps)
3M USD LIBOR	0.119	0.000
3M EUR EURIBOR	-0.548	-0.003
3M GBP LIBOR	0.085	0.001
3Y USD SWAP	0.407	0.020
5Y USD SWAP	0.816	0.031
10Y USD SWAP	1.432	0.021
30Y USD SWAP	1.838	0.014

USD CORPORATES - 30 DAYS SPREAD

FIXED INCOME SPREADS

	Spread	ΔSpread (in Bps)
USD 3M vs 10Y Spread	1.426	0.020
USD 2Y vs 10Y Spread	1.303	0.020
USD IG Spread	1.070	0.000
USD HY Spread	2.460	0.000
EU vs US 10Y Spread	-1.726	0.041
EU vs US 2Y Spread	-0.830	-0.014
EM vs Benchmark Spread	255.500	0.000

EU VS US - 30 DAYS SPREAD


GLOBAL COMMODITIES MARKET

	Last Price	Daily %
Commodity Index	94.43	-0.59%

Energy

WTI Crude Future	71.24	0.47%
Brent Crude Future	73.01	0.44%
NYMEX Gasoline	219.95	0.61%
NYMEX Heat Oil	213.03	0.45%
ICE Gasoil	591.75	0.38%
NYMEX Natural Gas	3.299	0.09%

Precious Metals

Gold Spot \$/Oz	1864.17	-0.71%
Silver Spot \$/Oz	27.8885	-0.10%
Platinum Spot \$/Oz	1147.86	-0.27%
Palladium Spot \$/Oz	2773.89	-0.12%
Gold Future	1865.9	-0.73%
Silver Future	28.01	-0.48%
Platinum Future	1146	-0.44%
Palladium Future	2776	-0.17%

Base Metals

LME Aluminum	2465	0.00%
LME Copper	10004	0.00%
LME Zinc	3045	0.00%
LME Nickel	18227	0.00%
LME Lead	2205	0.00%
LME Tin	31570	0.00%

Agricultural

Corn CBT	584.25	-4.18%
Wheat CBT	670.5	-2.22%
Soybeans CBT	1406	-2.28%
Bean Meal CBT	389.5	-1.52%
Rough Rice CBT	12.85	0.00%
MDE Palm Oil	3300	-9.91%
Soybean CBT	61.75	-3.08%
Coffee ICE	159.6	0.00%
Sugar #11 ICE	17.67	0.00%
Cotton #2 ICE	87.57	-0.40%
Cocoa ICE	2402	0.00%
Ethanol CME	2.46	0.00%
Lumber CME	1059.2	0.00%
Orange Juice ICE	121	0.00%
Live Cattle CME	120.025	0.00%
Feeder Cattle CME	151.175	0.00%
Lean Hogs CME	116.975	0.00%

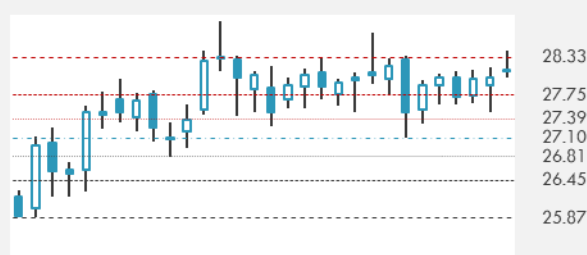
COMMODITY INDEX SUPPORT & RESISTANCE

WTI OIL 30 DAYS SUPPORT & RESISTANCE


- Oil hit a 32-month high as the roll-out of coronavirus vaccines underpins an improved demand outlook in the U.S. and Europe.
- Gold extended a decline as investors await this week's Federal Reserve meeting for clues on the future path of monetary policy.

Source: Bloomberg, Reuters

GOLD 30 DAYS SUPPORT & RESISTANCE

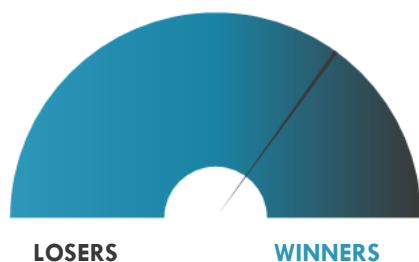
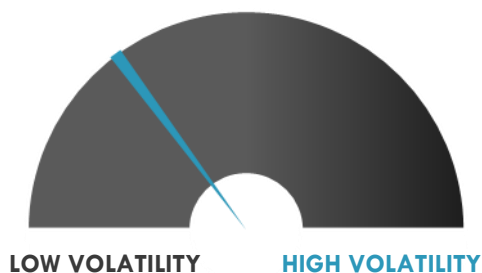
SILVER 30 DAYS SUPPORT & RESISTANCE


TOP 10 WINNERS

	Ticker	Last Price	Daily %
S&P 500 Stocks			
VF Corp	VFC	82.13	+4.56%
PVH Corp	PVH	113.04	+3.97%
Tapestry Inc	TPR	44.3	+3.70%
Gap Inc/The	GPS	32.31	+3.19%
Nasdaq Inc	NDAQ	172.95	+2.73%
Ralph Lauren Corp	RL	122.73	+2.57%
Penn National Gaming	PENN	83.84	+2.53%
Enphase Energy Inc	ENPH	147.13	+2.53%
Hanesbrands Inc	HBI	19.53	+2.47%
Tractor Supply Co	TSCO	184.19	+2.42%

TOP 10 LOSERS

	Ticker	Last Price	Daily %
S&P 500 Stocks			
Vertex Pharmaceuticals	VRTX	193.02	-10.96%
Incyte Corp	INCY	82.58	-5.66%
Biogen Inc	BIIB	396.64	-4.36%
Eli Lilly & Co	LLY	224.09	-4.05%
Crown Castle Intern.	CCI	194.34	-2.95%
Perrigo Co PLC	PRGO	47.73	-2.33%
Organon & Co	OGN	29.65	-2.24%
Caterpillar Inc	CAT	220.7	-2.23%
Baxter International Inc	BAX	82.24	-2.20%
Archer-Daniels	ADM	66	-1.83%

S&P 500 DISTRIBUTION

S&P VOLATILITY INDEX


- Embraer (+3.9%) extended its two-day rally to ~20% as Bank of America upgraded shares to Buy from Neutral, citing significant upside from a potential public listing or other investment opportunities related to its Eve Urban Air Mobility.
- AGNC Investment stock fell 5.1% in late trading after the mortgage REIT files for a mixed automatic shelf registration.
- No-longer-microcap media company Urban One was up 30% on heavy volume - one of a sporadic series of days where the stock makes a heavy move on active trading and no particular catalyst.
- SPAC Churchill Capital V rose 2.1% after a report that the Michael Klein-led SPAC is in talks to the online retailer public.
- With a view to cut its model count by roughly a fifth by the fiscal year ending March 2024, Nissan Motor (-1.5%) will end development of new versions of all its sedans in Japan as sport utility vehicles make inroads into its home market - Nikkei.
- After a more than a sevenfold rise in value over the past year, Curis was back on track to record its biggest one-day loss in more than a decade.
- BlackBerry shares went down by 12.5% despite the stock becoming a new favorite of Reddit's WallStreetBets forum. Meme stocks were largely pulling back after news of a potential SEC investigation into meme-stock trading.
- Cerner popped 0.6% after a report that the health care company may be a takeover target, an update of a story from last month.

KEY ECONOMIC INDICATORS

Country	Event	Surv (M)	Actual	Prior	Time
Canada	Manufacturing Sales MoM	-1.10%	--	3.50%	15:30
Canada	Bloomberg Nanos Confidence	--	--	65.9	15:00
China	Foreign Direct Investment YoY CNY	--	--	4.60%	
China	1-Yr Medium-Term Lending Facility Rate	--	--	2.95%	
Estonia	Current Account Balance	--	-5.50E+07	-4.79E+08	8:00
Eurozone	Industrial Production SA MoM	0.40%	--	0.10%	12:00
Eurozone	Industrial Production WDA YoY	37.40%	--	10.90%	12:00
Finland	CPI YoY	--	2.20%	2.10%	8:00
Finland	CPI MoM	--	0.20%	0.40%	8:00
France	Bank of France Ind. Sentiment	108	--	107	
Ireland	Ulster Bank Ireland Construction PMI	--	66.4	49.3	3:01
Japan	Industrial Production MoM	--	2.90%	2.50%	7:30
Japan	Industrial Production YoY	--	15.80%	15.40%	7:30
Japan	Capacity Utilization MoM	--	1.10%	5.60%	7:30
Portugal	CPI EU Harmonized YoY	--	--	0.40%	13:00
Portugal	CPI EU Harmonized MoM	--	--	0.20%	13:00
Portugal	CPI YoY	--	--	1.20%	13:00
Portugal	CPI MoM	--	--	0.20%	13:00
Slovakia	Average Real Monthly Wage YoY	--	--	6.20%	10:00
Slovakia	Industrial Sales YoY	--	--	31.40%	10:00

Source: Bloomberg

Banque BEMO sal

Head Office - Private and Corporate Banking

Elias Sarkis Ave., Bemo Bldg , Ashrafieh - Lebanon
Tel: +961 1 200 505 Fax: +961 1 217 860

Research & Development research@bemobank.com

Elias Sarkis Ave., Bemo Bldg , Ashrafieh - Lebanon
Tel: +961 1 200 505 Fax: +961 1 217 860

Disclaimer:

This report is published for information purposes only. The information herein has been compiled from, or based upon sources considered to be reliable (Bloomberg, SeekingAlpha, DailyStar...), but we do not guarantee or assume responsibility for its completeness and accuracy. This document should not be construed as a solicitation to take part in any investment, or as constituting any representation or warranty on our part. This report is not to be relied upon in substitution for the exercise of specialists.

We may not have taken any steps to ensure that the securities referred to in this report are suitable for any particular investor. The investments and services contained or referred to herein are not purported to be exhaustive, any person considering an investment should seek specialist advice on the suitability of an investment.

Nothing in this report constitutes investment, legal, accounting or tax advice, or a representation that any investment or strategy is suitable or appropriate to your individual circumstances, or otherwise constitutes a personal recommendation. Clients understand that it is their responsibility to seek legal and/or tax advice regarding the legal and tax consequences of their investment transactions. The consequences of any action taken on the basis of information contained herein are solely the responsibility of the recipient.

Investment instruments are subject to risk, including possible loss of principal amount invested. Past performance should not be taken as an indication or guarantee of future performance, and no representation or warranty, express or implied, is made regarding future performance. The value of securities and financial instruments is subject to exchange rate fluctuation that may have a positive or adverse effect on the price or income of such securities or financial instruments. Some investments mentioned in this report may have a high level of volatility. High volatility investments may experience sudden and large falls in their value causing losses when that investment is realized. Some investments may not be readily realizable and it may be difficult to sell or realize those investments, similarly it may prove difficult to obtain reliable information about the value, or risks, to which such an investment is exposed.

This report may provide the addresses of websites or references. We have not reviewed any such site and takes no responsibility for the content contained therein. Such address or reference is provided solely for convenience and information. Accessing such website through this report shall be at the recipients own risk.