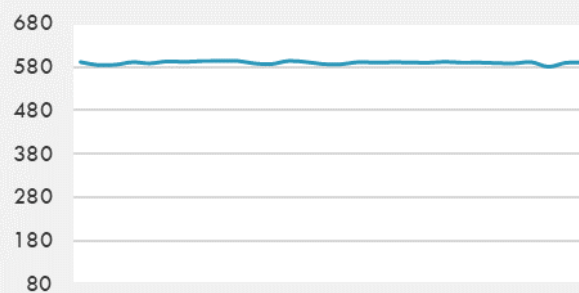
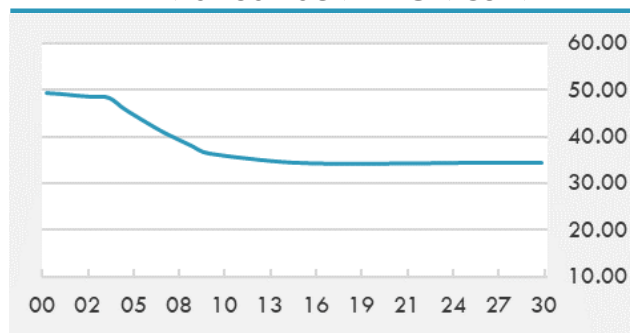


BEIRUT STOCK EXCHANGE

| | Last | Daily % | YTD % | Dividend % |
|---------------------------------------|--------|---------|--------|------------|
| MSCI Lebanon | 589.73 | 1.78% | 34.72% | |
| Development and Reconstruction | | | | |
| Solidere A | 24.87 | 0.61% | 34.43% | |
| Solidere B | 24.8 | 5.58% | 35.59% | |
| Banking | | | | |
| Audi Listed | 2.24 | 0.00% | 83.61% | |
| BLC Listed | 0.93 | 0.00% | 0.00% | |
| BOB Listed | 17.8 | 0.00% | 0.00% | |
| Byblos Listed | 0.97 | 0.00% | 83.02% | |
| BEMO Listed | 1.2 | 0.00% | 0.00% | |
| BLOM Listed | 3.03 | 0.00% | 46.38% | |
| Trading | | | | |
| RYMCO | 3.19 | 0.00% | 0.00% | |
| Industrial | | | | |
| Holcim | 17 | 0.00% | 17.24% | |
| Ciments Blancs | 4.5 | 0.00% | 9.76% | |

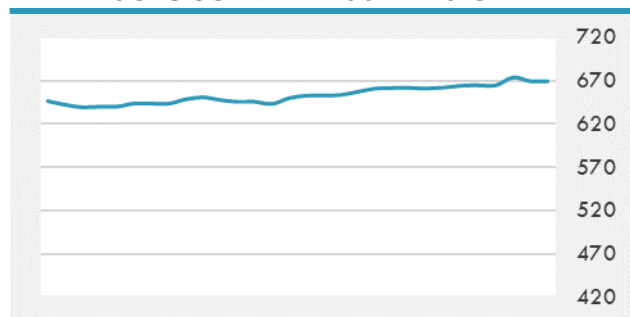
MSCI LEBANON INDEX - 30 DAYS CHART

LEBANESE USD SOVEREIGN CURVE


- The Tadawul All Share Index of the Saudi Exchange closed Tuesday lower by 82.18 points or 0.75% at 10,831.38 points.
- The Consumer Price Index of Saudi Arabia went up 5.7% in May this year, compared to the same month in 2020, according to official figures on Tuesday.
- Malabar Investments announced that it has redomiciled the company with the Dubai International Financial Centre and the registration of its international operations shares with Nasdaq Dubai's Central Securities Depository.

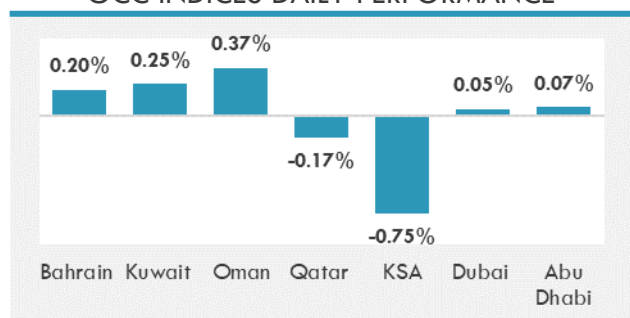
Source: Daily Star, Gulf Business, Mubasher, Bloomberg, Businessnews LB

GCC EQUITY INDICES

| | Last Price | Daily % | YTD % |
|-----------|------------|---------|--------|
| Bahrain | 1564 | 0.20% | 4.98% |
| Kuwait | 6376.6 | 0.25% | 14.98% |
| Oman | 4048.78 | 0.37% | 10.66% |
| Qatar | 10792.97 | -0.17% | 3.42% |
| KSA | 10831.38 | -0.75% | 24.65% |
| Dubai | 2869.49 | 0.05% | 15.15% |
| Abu Dhabi | 6740.68 | 0.07% | 33.60% |

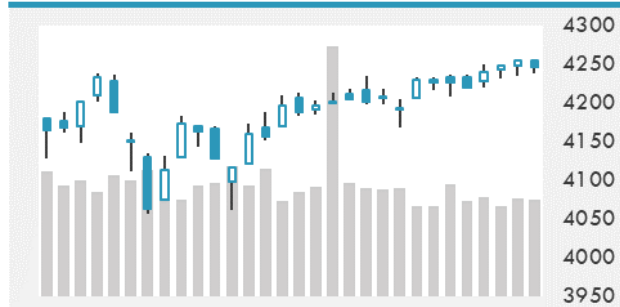
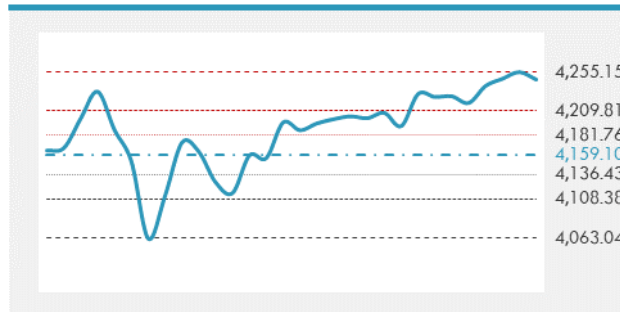
MSCI GCC INDEX - 30 DAYS CHART

LOCAL/GCC FOREIGN EXCHANGE

| | Cross | Last Price |
|---------------------|---------|------------|
| Lebanese Pound Spot | USD/LBP | 1515.5 |
| Bahraini Dinar Spot | USD/BHD | 0.37697 |
| Kuwaiti Dinar Spot | USD/KWD | 0.30085 |
| Omani Rial Spot | USD/OMR | 0.385 |
| Qatari Riyal Spot | USD/QAR | 3.6414 |
| Saudi Riyal Spot | USD/SAR | 3.7502 |
| UAE Dirham Spot | USD/AED | 3.673 |

GCC INDICES DAILY PERFORMANCE


UNITED STATES EQUITY MARKET INDICES

| | Last Price | Daily % | YTD % | Δ10D Vol |
|------------------------|------------|---------|--------|----------|
| Major Indices | | | | |
| Dow Jones | 34299.33 | 0.00% | 12.07% | 0.06% |
| S&P 500 | 4246.59 | 0.00% | 13.06% | 0.27% |
| Nasdaq | 14072.86 | 0.00% | 9.19% | 1.40% |
| Sectors Indices | | | | |
| Discretionary | 1383.59 | 0.00% | 6.22% | 0.11% |
| Staples | 724.42 | 0.00% | 4.04% | -0.22% |
| Energy | 420.34 | 0.00% | 46.90% | 1.33% |
| Financials | 617.55 | 0.00% | 25.92% | 0.16% |
| Healthcare | 1449.02 | 0.00% | 9.44% | -0.22% |
| Industrials | 872.8 | 0.00% | 16.44% | 0.98% |
| IT | 2499.34 | 0.00% | 9.08% | 1.19% |
| Materials | 531.55 | 0.00% | 16.64% | -0.37% |
| Com. Services | 261.58 | 0.00% | 17.87% | 0.40% |
| Utilities | 335.54 | 0.00% | 5.16% | -0.12% |
| Real Estate | 281.86 | 0.00% | 23.68% | 0.73% |

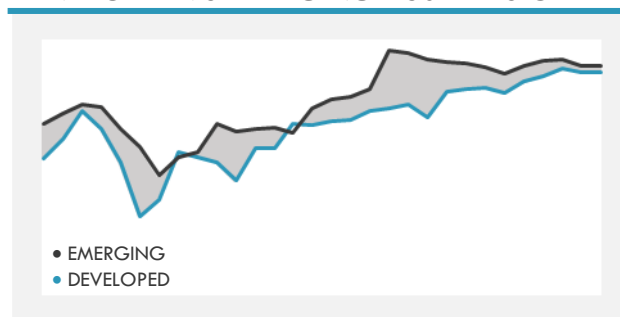
S&P 500 INDEX - 30 DAYS CHART

S&P 500 SUPPORT & RESISTANCE


- U.S. index futures traded slightly higher as investors await Wednesday's key Federal Reserve meeting.
- European equities rose to an eighth successive record as investors awaited tomorrow's key decision from the U.S. Federal Reserve for clues on the duration of supportive policy measures.
- Asian equities slipped, as gains in financial stocks were overshadowed by market wariness over the outcome of this week's FOMC meeting.

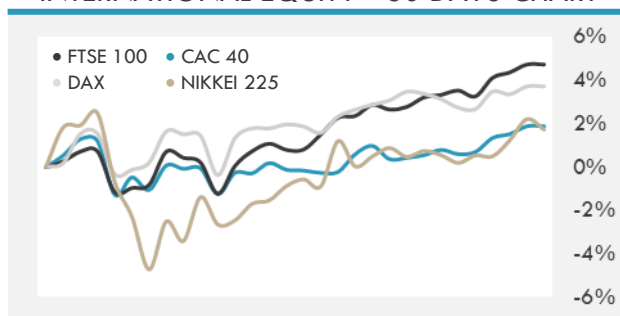
Source: Bloomberg, Financial Times, Reuters

INTERNATIONAL MARKETS INDICES

| | Last Price | Daily % | YTD % | Δ10D Vol |
|---------------|------------|---------|--------|----------|
| World | 1759.2 | 0.00% | 11.45% | 0.15% |
| Developed | 3017.27 | 0.00% | 12.16% | 0.13% |
| Emerging | 1378.27 | 0.00% | 6.74% | 0.26% |
| Frontier | 2603.56 | 0.00% | 0.45% | -2.49% |
| Europe | 152.1 | 0.00% | 15.14% | -0.04% |
| Latin America | 2649.83 | 0.00% | 8.08% | -2.20% |
| Asia Pacific | 210.28 | 0.00% | 5.18% | 0.13% |

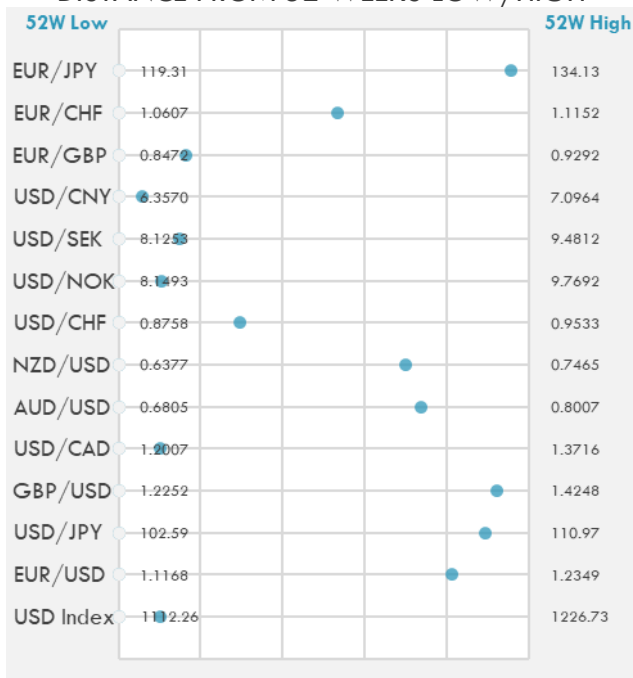
DEVELOPED VS EMERGING - 30 DAYS CHART

INTERNATIONAL EQUITY INDICES

| | Last Price | Daily % | YTD % | Δ10D Vol |
|--------------|------------|---------|--------|----------|
| EuroStoxx 50 | 4143.52 | 0.00% | 16.63% | -0.20% |
| FTSE 100 | 7172.48 | 0.00% | 11.02% | -0.05% |
| CAC 40 | 6639.52 | 0.00% | 19.60% | -0.18% |
| DAX | 15729.52 | 0.00% | 14.66% | 0.15% |
| Swiss SMI | 11921.97 | 0.00% | 11.38% | -0.04% |
| Nikkei 225 | 29300.01 | -0.48% | 6.76% | 1.26% |
| CSI 300 | 5092.01 | -1.44% | -2.29% | 0.67% |

INTERNATIONAL EQUITY - 30 DAYS CHART


FOREIGN EXCHANGE MARKET

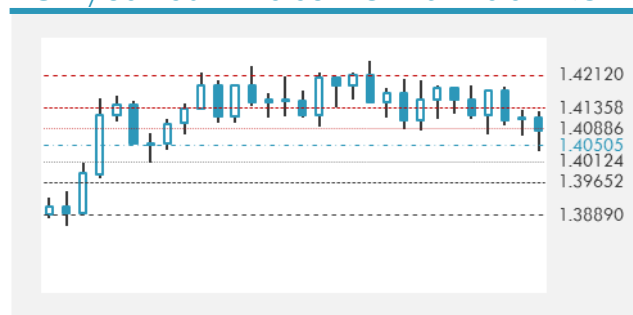
| | Last Price | Daily % | Δ10D | Vol 25 | ΔRR |
|-----------------------------|------------|---------|--------|--------|-----|
| Major USD Cross Rate | | | | | |
| USD Index | 1123.79 | -0.03% | -1.29% | - | |
| EUR/USD | 1.2129 | 0.02% | -1.51% | -0.168 | |
| USD/JPY | 110.07 | -0.01% | -1.13% | 0.055 | |
| GBP/USD | 1.409 | 0.05% | -0.53% | -0.278 | |
| USD/CAD | 1.2178 | -0.05% | -0.85% | 0.313 | |
| AUD/USD | 0.7693 | 0.08% | -2.73% | -0.335 | |
| NZD/USD | 0.7138 | 0.24% | -2.12% | -0.215 | |
| USD/CHF | 0.8986 | 0.07% | -1.41% | 0.055 | |
| USD/NOK | 8.3179 | 0.00% | -1.99% | 1.108 | |
| USD/SEK | 8.3254 | -0.03% | -1.74% | 0.320 | |
| USD/CNY | 6.4002 | -0.09% | -0.79% | 0.350 | |
| Major EUR Cross Rate | | | | | |
| EUR/GBP | 0.86077 | -0.04% | -0.22% | 0.275 | |
| EUR/CHF | 1.08987 | 0.05% | 0.10% | 0.260 | |
| EUR/JPY | 133.5 | 0.01% | 0.00% | -0.088 | |

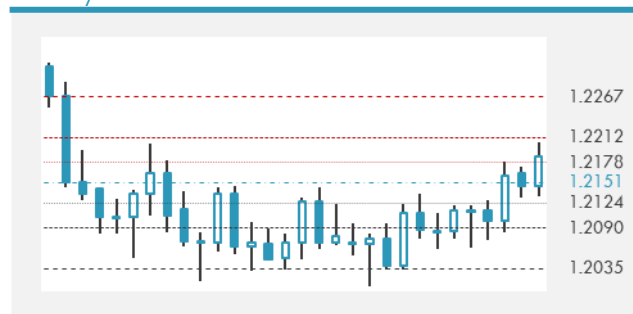
DISTANCE FROM 52 WEEKS LOW/HIGH


- A gauge of the dollar strength traded near a one-week high before a Federal Reserve policy decision that may offer an insight on the timing for a reduction in bond purchases.
- Australia's currency was bought on dips by local exporters after the central bank pledged to keep an accommodative policy in minutes of its latest review released Tuesday, a trader said. New Zealand's dollar rose versus all its Group-of-10 peers as it was bought against the Aussie.
- China's yuan stayed in a narrow range before the release of retail and industrial production data later on Wednesday.

Source: Bloomberg, Financial Times, Reuters

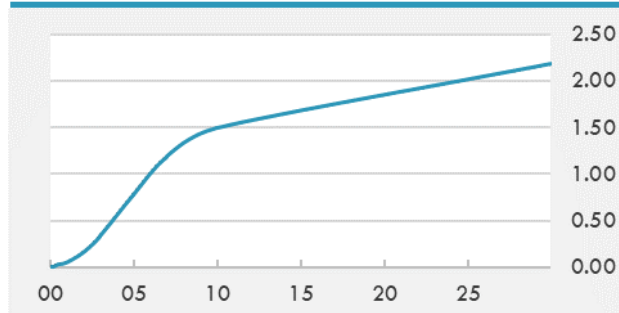
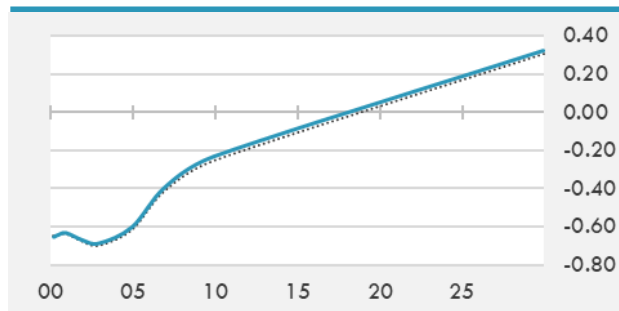
EUR/USD 30 DAYS SUPPORT & RESISTANCE

GBP/USD 30 DAYS SUPPORT & RESISTANCE

USD/JPY 30 DAYS SUPPORT & RESISTANCE

USD/CAD 30 DAYS SUPPORT & RESISTANCE


GLOBAL BOND INDICES

| | Yield | ΔYield (in Bps) |
|-----------------------------|--------|-----------------|
| Benchmark Indices | | |
| US 10 Years Benchmark | 1.4922 | -0.002 |
| EU 10 Years Benchmark | -0.232 | 0.019 |
| UK 10 Years Benchmark | 0.758 | 0.017 |
| Sovereign Bonds | | |
| US Treasury Bond | 0.594 | 0 |
| Eurozone Sovereign Bond | -0.428 | 0 |
| Japan Sovereign Bond | -0.104 | 0 |
| Corporate Bonds | | |
| US Corporate TR | 2.062 | -0.005 |
| US High Yield Bond TR | 3.871 | 0.033 |
| EUR Aggregate Corporate TR | 0.319 | 0.011 |
| EUR High Yield TR | 2.912 | -0.013 |
| USD Emerging Market IG & HY | 3.779 | 0.017 |

US TREASURIES YIELD CURVE

EUR GENERIC YIELD CURVE


- Treasury futures plateau through Asia hours as activity slumps ahead of FOMC. JGBs also flat. Aussie short-dated yields remain under downward pressure. N. Z. bond yields edge higher after an uptick in QE offers.
- Japan's investors continued to shift from Treasuries to U.S. agency debt as they sought higher returns to offset negative interest rates at home. The nation's funds purchased a net \$12 billion of U.S. agency debt in April while selling \$13.5 billion of Treasuries, the biggest withdrawal since February 2018.

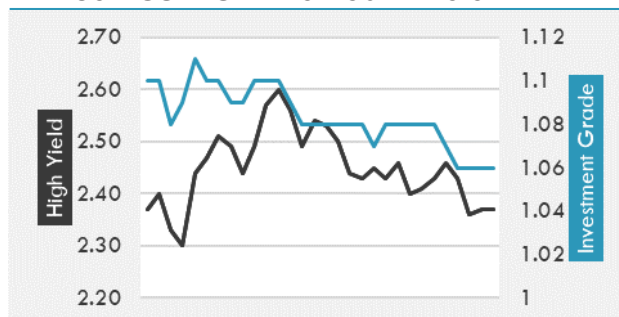
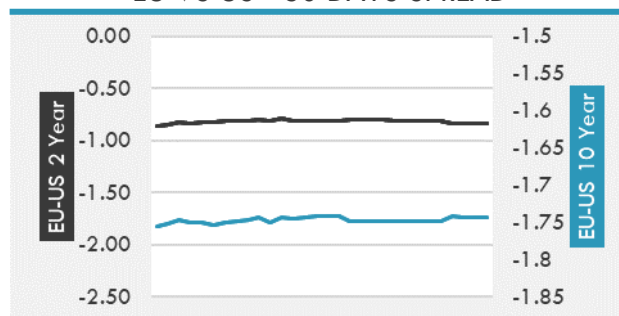
Source: Bloomberg, Financial Times, Economic times, Reuters

OVERNIGHT RATES - SWAPS

| | Yield | ΔYield (in Bps) |
|----------------|--------|-----------------|
| 3M USD LIBOR | 0.118 | 0.000 |
| 3M EUR EURIBOR | -0.546 | 0.000 |
| 3M GBP LIBOR | 0.084 | 0.000 |
| 3Y USD SWAP | 0.434 | 0.004 |
| 5Y USD SWAP | 0.853 | -0.002 |
| 10Y USD SWAP | 1.465 | -0.004 |
| 30Y USD SWAP | 1.869 | -0.005 |

FIXED INCOME SPREADS

| | Spread | ΔSpread (in Bps) |
|------------------------|---------|------------------|
| USD 3M vs 10Y Spread | 1.469 | -0.002 |
| USD 2Y vs 10Y Spread | 1.327 | -0.006 |
| USD IG Spread | 1.060 | 0.000 |
| USD HY Spread | 2.370 | 0.010 |
| EU vs US 10Y Spread | -1.742 | -0.010 |
| EU vs US 2Y Spread | -0.832 | -0.001 |
| EM vs Benchmark Spread | 252.900 | 0.000 |

USD CORPORATES - 30 DAYS SPREAD

EU VS US - 30 DAYS SPREAD


GLOBAL COMMODITIES MARKET

| | Last Price | Daily % |
|-----------------|------------|---------|
| Commodity Index | 93.48 | -0.07% |

Energy

| | | |
|--------------------|--------|--------|
| WTI Crude Future | 72.6 | 0.67% |
| Brent Crude Future | 74.61 | 0.84% |
| NYMEX Gasoline | 217.1 | 0.02% |
| NYMEX Heat Oil | 211.21 | -0.01% |
| ICE Gasoil | 602.5 | 1.01% |
| NYMEX Natural Gas | 3.21 | -0.93% |

Precious Metals

| | | |
|----------------------|---------|--------|
| Gold Spot \$/Oz | 1860.6 | 0.08% |
| Silver Spot \$/Oz | 27.7366 | 0.26% |
| Platinum Spot \$/Oz | 1151.9 | -0.40% |
| Palladium Spot \$/Oz | 2759.02 | -0.22% |
| Gold Future | 1861.9 | 0.30% |
| Silver Future | 27.86 | 0.60% |
| Platinum Future | 1150 | 0.12% |
| Palladium Future | 2760 | -0.17% |

Base Metals

| | | |
|--------------|-------|-------|
| LME Aluminum | 2467 | 0.00% |
| LME Copper | 9570 | 0.00% |
| LME Zinc | 3029 | 0.00% |
| LME Nickel | 17739 | 0.00% |
| LME Lead | 2176 | 0.00% |
| LME Tin | 31463 | 0.00% |

Agricultural

| | | |
|-------------------|---------|--------|
| Corn CBT | 576.5 | 0.48% |
| Wheat CBT | 670.5 | 0.68% |
| Soybeans CBT | 1364.25 | -0.67% |
| Bean Meal CBT | 379.7 | 0.11% |
| Rough Rice CBT | 12.7 | 1.03% |
| MDE Palm Oil | 3454 | -3.52% |
| Soybean CBT | 60.58 | -1.22% |
| Coffee ICE | 153.25 | 0.00% |
| Sugar #11 ICE | 17.2 | 0.00% |
| Cotton #2 ICE | 86.42 | -0.44% |
| Cocoa ICE | 2428 | 0.00% |
| Ethanol CME | 2.46 | 0.00% |
| Lumber CME | 1009.9 | 0.00% |
| Orange Juice ICE | 116.7 | 0.00% |
| Live Cattle CME | 123.9 | 0.00% |
| Feeder Cattle CME | 156.825 | 0.00% |
| Lean Hogs CME | 114.7 | 0.00% |

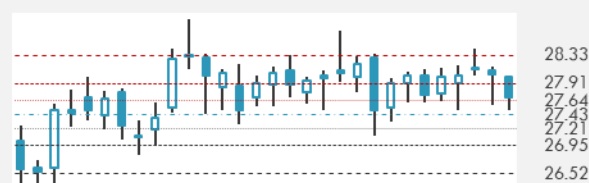
COMMODITY INDEX SUPPORT & RESISTANCE

WTI OIL 30 DAYS SUPPORT & RESISTANCE


- UBS increased price forecasts for Brent and WTI by \$3/bbl as supply growth lagging demand growth and inventories poised to fall at a faster pace.
- Gold steadied near the lowest level in four weeks as investors awaited the conclusion of the Federal Reserve's two-day meeting for clues on monetary policy.

Source: Bloomberg, Reuters

GOLD 30 DAYS SUPPORT & RESISTANCE

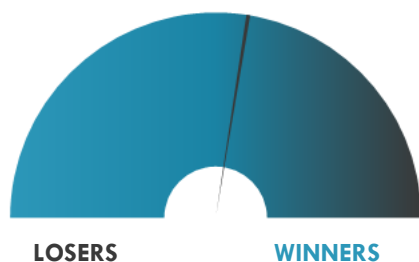
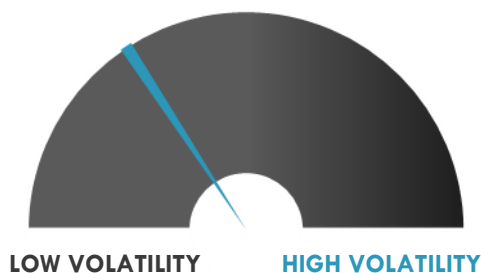
SILVER 30 DAYS SUPPORT & RESISTANCE


TOP 10 WINNERS

| | Ticker | Last Price | Daily % |
|---------------------------|--------|------------|---------|
| S&P 500 Stocks | | | |
| Diamondback Energy Inc | FANG | 90.85 | +5.10% |
| Organon & Co | OGN | 31.81 | +5.05% |
| NOV Inc | NOV | 17.51 | +4.16% |
| Exxon Mobil Corp | XOM | 64.33 | +3.64% |
| Occidental Petroleum | OXY | 29.2 | +3.25% |
| Marathon Oil Corp | MRO | 13.84 | +3.13% |
| Synchrony Financial | SYF | 50.05 | +2.90% |
| Halliburton Co | HAL | 24.19 | +2.50% |
| Humana Inc | HUM | 424.66 | +2.30% |
| Textron Inc | TXT | 68.69 | +2.29% |

TOP 10 LOSERS

| | Ticker | Last Price | Daily % |
|---------------------------|--------|------------|---------|
| S&P 500 Stocks | | | |
| Alexandria Real Estate | ARE | 183.72 | -5.07% |
| Freeport-McMoRan Inc | FCX | 37.6 | -4.76% |
| Take-Two Interactive | TTWO | 178.6 | -4.36% |
| Activision Blizzard Inc | ATVI | 95.97 | -3.24% |
| Vertex Pharmaceuticals | VRTX | 188.97 | -2.99% |
| Tesla Inc | TSLA | 599.36 | -2.97% |
| Molson Coors Beverage | TAP | 58.14 | -2.71% |
| Penn National Gaming | PENN | 78.57 | -2.59% |
| Electronic Arts Inc | EA | 144.8 | -2.52% |
| Etsy Inc | ETSY | 166.06 | -2.49% |

S&P 500 DISTRIBUTION

S&P VOLATILITY INDEX


- RA Capital Management disclosed ownership of ~5.75M shares of Catabasis Pharmaceuticals. Shares went up 44% during after market hours.
- La-Z-Boy slips 0.8% in AH trading after warning that ongoing global supply chain disruptions and headwinds related to raw materials and freight costs will cause some volatility in upcoming results.
- Consolidated Edison -1.5% post-market after saying it plans to issue 10.1M common shares in a public offering starting on June 18.
- Cannabis cultivator and manufacturer Columbia Care will acquire Denver-area dispensary chain Medicine Man in a \$42M deal.
- Roblox has slipped 6.5% after releasing its May key metrics, which indicated a month-to-month decline in users.
- The FDA has approved StrataGraft, a topical application that uses a patient's own skin cells to treat thermal burns. The approval was granted to Stratatech, a Mallinckrodt company.
- Oracle shares are down 1.5% after hours despite reporting fiscal Q4 beats with revenue up 8% Y/Y to \$11.23B and EPS of \$1.54.
- Exxon Mobil pushes to its highest since January 2020 on a strong day for oil producers, as crude oil prices touch their best levels in more than two-and-a-half years.
- Blue Apron Holdings says it is commencing an underwritten public offering of shares of its Class A common stock.

KEY ECONOMIC INDICATORS

| Country | Event | Surv (M) | Actual | Prior | Time |
|----------------|----------------------------------|-----------|-----------|----------|-------|
| Australia | Westpac Leading Index MoM | -- | -0.06% | 0.20% | 3:30 |
| Canada | CPI YoY | 3.50% | -- | 3.40% | 15:30 |
| Canada | CPI NSA MoM | 0.40% | -- | 0.50% | 15:30 |
| Canada | CPI Core- Trim YoY% | 2.30% | -- | 2.30% | 15:30 |
| China | Industrial Production YoY | 9.20% | -- | 9.80% | 10:00 |
| China | Retail Sales YoY | 14.00% | -- | 17.70% | 10:00 |
| Ireland | Property Prices MoM | -- | -- | 0.70% | 13:00 |
| Japan | Core Machine Orders MoM | 2.50% | 0.60% | 3.70% | 2:50 |
| Japan | Trade Balance | -7.70E+10 | -1.87E+11 | 2.55E+11 | 2:50 |
| Japan | Core Machine Orders YoY | 8.00% | 6.50% | -2.00% | 2:50 |
| United Kingdom | CPI YoY | 1.80% | -- | 1.50% | 9:00 |
| United Kingdom | CPI MoM | 0.30% | -- | 0.60% | 9:00 |
| United Kingdom | CPI Core YoY | 1.50% | -- | 1.30% | 9:00 |
| United Kingdom | RPI MoM | 0.30% | -- | 1.40% | 9:00 |
| United Kingdom | RPI YoY | 3.30% | -- | 2.90% | 9:00 |
| United States | FOMC Rate Decision (Upper Bound) | 0.25% | -- | 0.25% | 21:00 |
| United States | MBA Mortgage Applications | -- | -- | -3.10% | 14:00 |
| United States | Housing Starts | 1.63E+06 | -- | 1.57E+06 | 15:30 |
| United States | Import Price Index MoM | 0.80% | -- | 0.70% | 15:30 |
| United States | Export Price Index MoM | 0.80% | -- | 0.80% | 15:30 |

Source: Bloomberg

Banque BEMO sal

Head Office - Private and Corporate Banking

Elias Sarkis Ave., Bemo Bldg , Ashrafieh - Lebanon
Tel: +961 1 200 505 Fax: +961 1 217 860

Research & Development research@bemobank.com

Elias Sarkis Ave., Bemo Bldg , Ashrafieh - Lebanon
Tel: +961 1 200 505 Fax: +961 1 217 860

Disclaimer:

This report is published for information purposes only. The information herein has been compiled from, or based upon sources considered to be reliable (Bloomberg, SeekingAlpha, DailyStar...), but we do not guarantee or assume responsibility for its completeness and accuracy. This document should not be construed as a solicitation to take part in any investment, or as constituting any representation or warranty on our part. This report is not to be relied upon in substitution for the exercise of specialists.

We may not have taken any steps to ensure that the securities referred to in this report are suitable for any particular investor. The investments and services contained or referred to herein are not purported to be exhaustive, any person considering an investment should seek specialist advice on the suitability of an investment.

Nothing in this report constitutes investment, legal, accounting or tax advice, or a representation that any investment or strategy is suitable or appropriate to your individual circumstances, or otherwise constitutes a personal recommendation. Clients understand that it is their responsibility to seek legal and/or tax advice regarding the legal and tax consequences of their investment transactions. The consequences of any action taken on the basis of information contained herein are solely the responsibility of the recipient.

Investment instruments are subject to risk, including possible loss of principal amount invested. Past performance should not be taken as an indication or guarantee of future performance, and no representation or warranty, express or implied, is made regarding future performance. The value of securities and financial instruments is subject to exchange rate fluctuation that may have a positive or adverse effect on the price or income of such securities or financial instruments. Some investments mentioned in this report may have a high level of volatility. High volatility investments may experience sudden and large falls in their value causing losses when that investment is realized. Some investments may not be readily realizable and it may be difficult to sell or realize those investments, similarly it may prove difficult to obtain reliable information about the value, or risks, to which such an investment is exposed.

This report may provide the addresses of websites or references. We have not reviewed any such site and takes no responsibility for the content contained therein. Such address or reference is provided solely for convenience and information. Accessing such website through this report shall be at the recipients own risk.