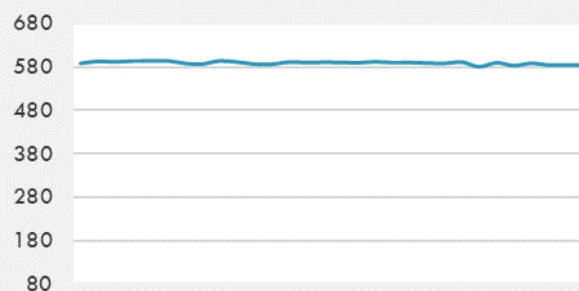
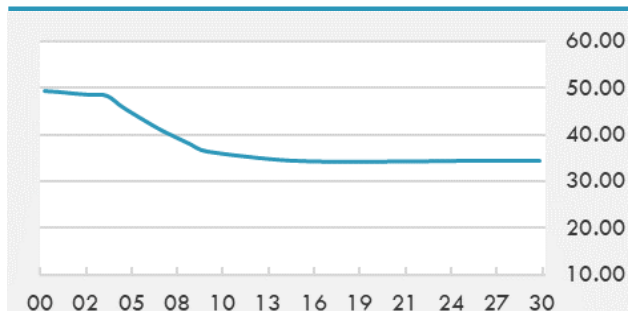


**BEIRUT STOCK EXCHANGE**

	Last	Daily %	YTD %	Dividend %
MSCI Lebanon	583.91	0.00%	33.39%	
<b>Development and Reconstruction</b>				
Solidere A	24.61	-1.09%	33.03%	
Solidere B	24.6	0.20%	34.50%	
<b>Banking</b>				
Audi Listed	2.4	7.14%	96.72%	
BLC Listed	0.93	0.00%	0.00%	
BOB Listed	17.8	0.00%	0.00%	
Byblos Listed	0.9	-3.23%	69.81%	
BEMO Listed	1.2	0.00%	0.00%	
BLOM Listed	3.38	11.55%	63.29%	
<b>Trading</b>				
RYMCO	3.19	0.00%	0.00%	
<b>Industrial</b>				
Holcim	17	0.00%	17.24%	
Ciments Blancs	4.5	0.00%	9.76%	

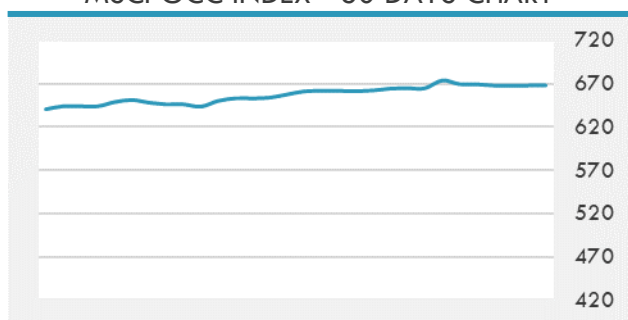
**MSCI LEBANON INDEX - 30 DAYS CHART**

**LEBANESE USD SOVEREIGN CURVE**


- Lebanon's insurance companies may witness a 20 percent drop in insurance premiums and volume if these firms start charging their customers in fresh US dollars or according to black market rates, former president of the Insurance Association Elie Torbey said Monday.
- The Tadawul All Share Index of the Saudi Exchange closed Monday at 10,859.18 points, higher by 0.63% or 68.43 points compared to Thursday.
- HSBC Saudi Arabia is currently acting as the custodian for its fund HSBC MSCI Tadawul 30 Saudi ETF, according to a bourse filing on Monday.

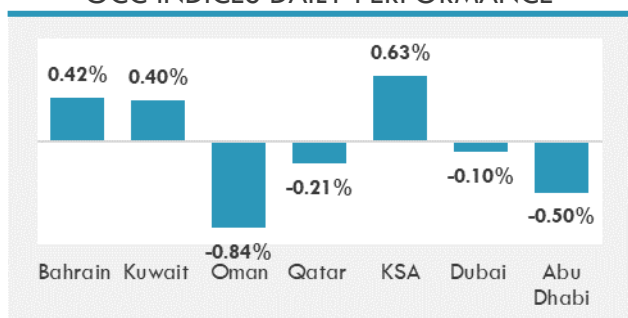
Source: Daily Star, Gulf Business, Mubasher, Bloomberg, Businessnews LB

**GCC EQUITY INDICES**

	Last Price	Daily %	YTD %
Bahrain	1569	0.42%	5.32%
Kuwait	6418.85	0.40%	15.74%
Oman	4022.87	-0.84%	9.95%
Qatar	10740.13	-0.21%	2.91%
KSA	10859.18	0.63%	24.97%
Dubai	2847.95	-0.10%	14.29%
Abu Dhabi	6615.95	-0.50%	31.13%

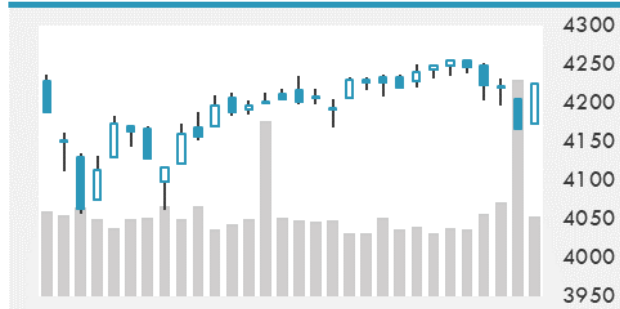
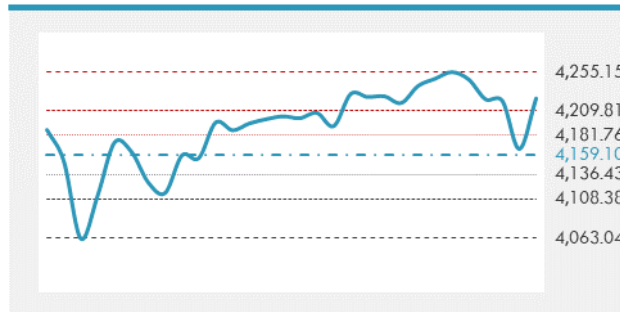
**MSCI GCC INDEX - 30 DAYS CHART**

**LOCAL/GCC FOREIGN EXCHANGE**

	Cross	Last Price
Lebanese Pound Spot	USD/LBP	1515.5
Bahraini Dinar Spot	USD/BHD	0.37698
Kuwaiti Dinar Spot	USD/KWD	0.3012
Omani Rial Spot	USD/OMR	0.385
Qatari Riyal Spot	USD/QAR	3.6417
Saudi Riyal Spot	USD/SAR	3.7501
UAE Dirham Spot	USD/AED	3.673

**GCC INDICES DAILY PERFORMANCE**


**UNITED STATES EQUITY MARKET INDICES**

	Last Price	Daily %	YTD %	Δ10D Vol
<b>Major Indices</b>				
Dow Jones	33876.97	0.00%	10.69%	6.12%
S&P 500	4224.79	0.00%	12.48%	3.47%
Nasdaq	14141.48	0.00%	9.72%	0.58%
<b>Sectors Indices</b>				
Discretionary	1395.05	0.00%	7.10%	-0.99%
Staples	713.99	0.00%	2.54%	1.95%
Energy	408.73	0.00%	42.84%	9.81%
Financials	597.63	0.00%	21.86%	6.62%
Healthcare	1455.73	0.00%	9.95%	0.99%
Industrials	858.47	0.00%	14.53%	6.75%
IT	2518.44	0.00%	9.91%	0.85%
Materials	515.91	0.00%	13.21%	6.55%
Com. Services	260.39	0.00%	17.34%	1.16%
Utilities	327.85	0.00%	2.75%	1.34%
Real Estate	281.43	0.00%	23.49%	3.84%

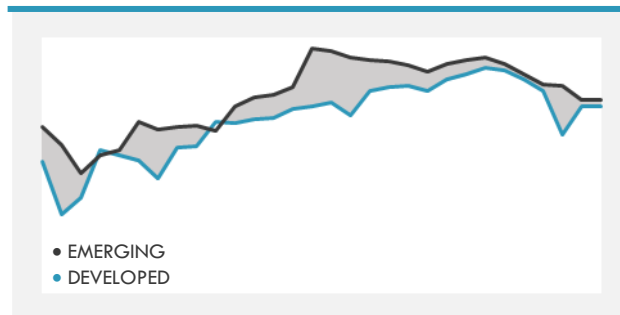
**S&P 500 INDEX - 30 DAYS CHART**

**S&P 500 SUPPORT & RESISTANCE**


- U.S. equity index futures reversed an earlier decline, while European equities bounced back on Monday as M&A action in the U.K. grocery sector outweighed recent worries over a more hawkish stance by the U.S. Federal Reserve.
- Asian stocks gained, with Japanese shares leading the advance, as investor concerns over the pace of U.S. monetary policy tightening and rising inflation eased.

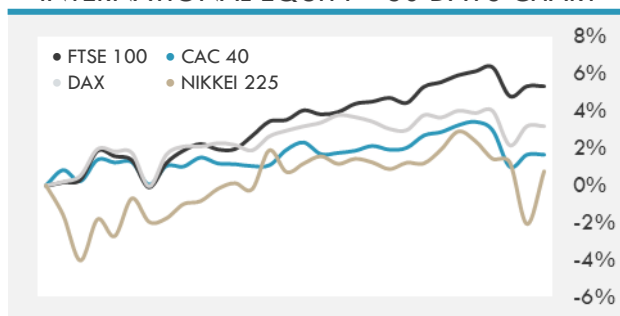
Source: Bloomberg, Financial Times, Reuters

**INTERNATIONAL MARKETS INDICES**

	Last Price	Daily %	YTD %	Δ10D Vol
World	1736.77	0.00%	10.02%	1.35%
Developed	2982.11	0.00%	10.86%	1.90%
Emerging	1350.52	0.00%	4.59%	0.97%
Frontier	2556.01	0.00%	-1.38%	0.09%
Europe	150.9	0.00%	14.23%	0.73%
Latin America	2618.63	0.00%	6.81%	0.82%
Asia Pacific	204.35	0.00%	2.22%	3.69%

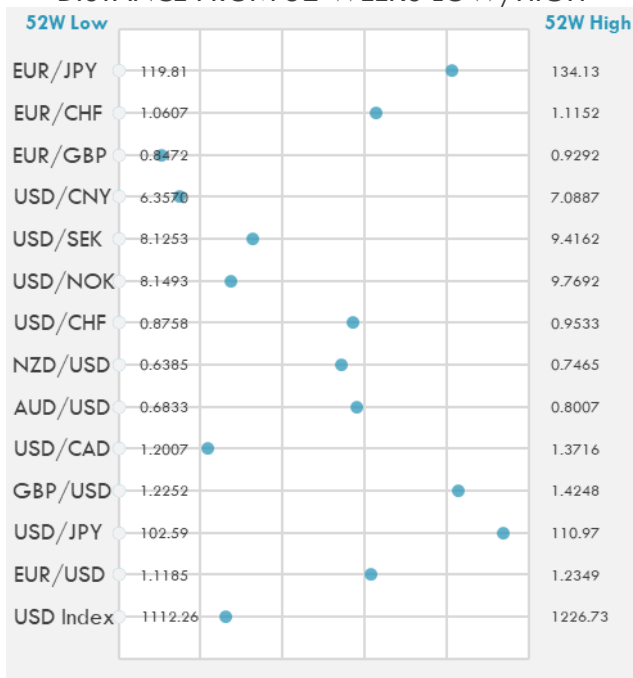
**DEVELOPED VS EMERGING - 30 DAYS CHART**

**INTERNATIONAL EQUITY INDICES**

	Last Price	Daily %	YTD %	Δ10D Vol
EuroStoxx 50	4112.33	0.00%	15.75%	0.68%
FTSE 100	7062.29	0.00%	9.31%	0.52%
CAC 40	6602.54	0.00%	18.93%	0.31%
DAX	15603.24	0.00%	13.74%	1.58%
Swiss SMI	11995.63	0.00%	12.07%	0.03%
Nikkei 225	28824.67	2.91%	5.03%	10.71%
CSI 300	5121.45	0.61%	-1.72%	-0.09%

**INTERNATIONAL EQUITY - 30 DAYS CHART**


**FOREIGN EXCHANGE MARKET**

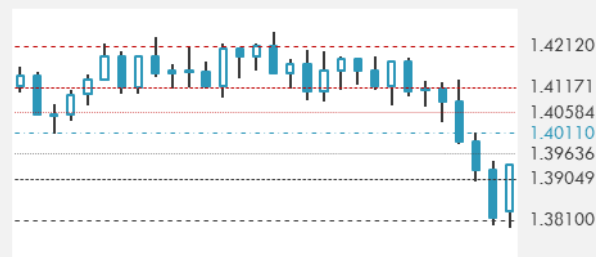
	Last Price	Daily %	Δ10D	Vol 25	ΔRR
<b>Major USD Cross Rate</b>					
USD Index	1142.05	0.18%	-0.07%	-	
EUR/USD	1.1902	-0.14%	-0.18%	-0.420	
USD/JPY	110.44	0.15%	0.02%	-0.288	
GBP/USD	1.3905	-0.21%	-0.02%	-0.473	
USD/CAD	1.238	0.14%	-0.09%	0.533	
AUD/USD	0.7515	-0.27%	-0.04%	-0.818	
NZD/USD	0.697	-0.26%	0.01%	-0.773	
USD/CHF	0.9200	0.24%	-0.29%	0.320	
USD/NOK	8.5914	0.15%	-0.03%	1.303	
USD/SEK	8.5467	0.20%	-0.25%	0.435	
USD/CNY	6.4662	-0.01%	-0.40%	0.100	
<b>Major EUR Cross Rate</b>					
EUR/GBP	0.8559	0.07%	-0.44%	0.168	
EUR/CHF	1.09491	0.08%	-0.03%	0.270	
EUR/JPY	131.44	0.02%	-0.16%	-0.525	

**DISTANCE FROM 52 WEEKS LOW/HIGH**


- The dollar rose versus all its Group-of-10 peers, recovering some of Monday's losses, as traders awaited testimony by Fed Chairman Jerome Powell and key data that may give a better gauge of the timing of any tapering.
- According to Chikako Mogi, senior markets and investment correspondent at Thomson Reuters, the yen is expected to be weighed down by a recovery in risk sentiment after U.S. stocks advanced and Treasuries fell.

Source: Bloomberg, Financial Times, Reuters

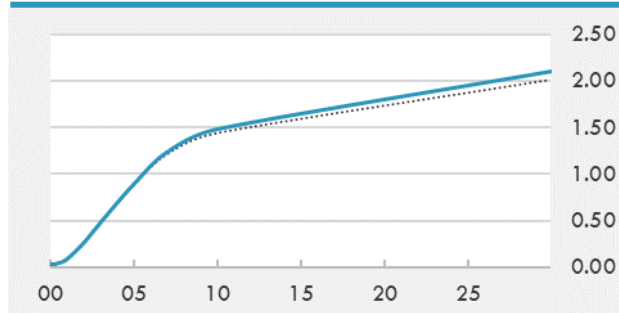
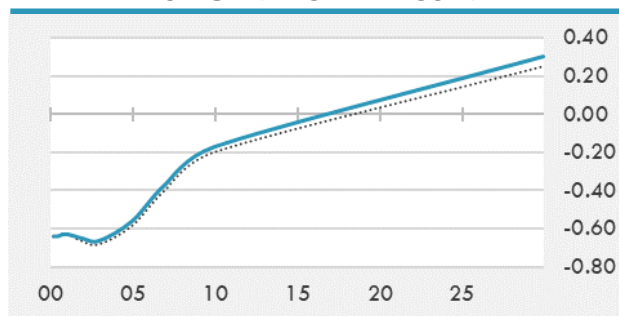
**EUR/USD 30 DAYS SUPPORT & RESISTANCE**

**GBP/USD 30 DAYS SUPPORT & RESISTANCE**

**USD/JPY 30 DAYS SUPPORT & RESISTANCE**

**USD/CAD 30 DAYS SUPPORT & RESISTANCE**


**GLOBAL BOND INDICES**

	Yield	ΔYield (in Bps)
<b>Benchmark Indices</b>		
US 10 Years Benchmark	1.4886	0.051
EU 10 Years Benchmark	-0.171	0.029
UK 10 Years Benchmark	0.769	0.017
<b>Sovereign Bonds</b>		
US Treasury Bond	0.594	0
Eurozone Sovereign Bond	-0.428	0
Japan Sovereign Bond	-0.104	0
<b>Corporate Bonds</b>		
US Corporate TR	2.081	0.033
US High Yield Bond TR	3.919	-0.043
EUR Aggregate Corporate TR	0.353	0.024
EUR High Yield TR	3.019	0.041
USD Emerging Market IG & HY	3.789	0.014

**US TREASURIES YIELD CURVE**

**EUR GENERIC YIELD CURVE**


- Treasuries ticked higher from cash open with good volume in 5-10y before steadying ahead of Fed Chairman Powell's testimony. Aussie short-end found initial support as RBC strategists recommend fading rate-hike pricing. JGB 5-year struggled as concession built ahead of auction.
- German bonds fell, led by the long-end, after the country said it would raise net borrowing next year to 99.7 billion euros, an increase of around 22% on a previous federal spending plan.

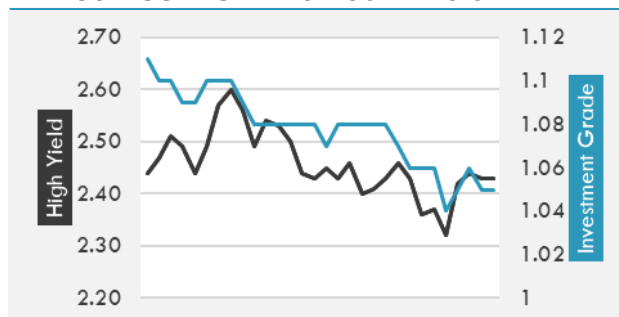
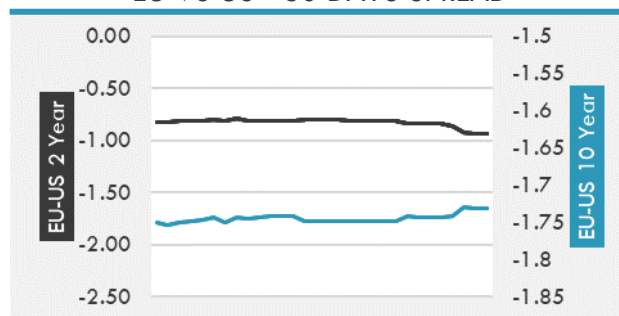
Source: Bloomberg, Financial Times, Economic times, Reuters

**OVERNIGHT RATES - SWAPS**

	Yield	ΔYield (in Bps)
3M USD LIBOR	0.135	0.000
3M EUR EURIBOR	-0.544	0.000
3M GBP LIBOR	0.080	0.000
3Y USD SWAP	0.550	0.006
5Y USD SWAP	0.942	0.016
10Y USD SWAP	1.452	0.053
30Y USD SWAP	1.782	0.075

**FIXED INCOME SPREADS**

	Spread	ΔSpread (in Bps)
USD 3M vs 10Y Spread	1.448	0.053
USD 2Y vs 10Y Spread	1.230	0.048
USD IG Spread	1.050	-0.010
USD HY Spread	2.430	-0.010
EU vs US 10Y Spread	-1.648	-0.010
EU vs US 2Y Spread	-0.931	-0.010
EM vs Benchmark Spread	251.200	0.000

**USD CORPORATES - 30 DAYS SPREAD**

**EU VS US - 30 DAYS SPREAD**


**GLOBAL COMMODITIES MARKET**

	Last Price	Daily %
Commodity Index	91.68	0.13%

**Energy**

WTI Crude Future	73.56	-0.14%
Brent Crude Future	75.09	0.25%
NYMEX Gasoline	219.82	0.06%
NYMEX Heat Oil	212.66	-0.01%
ICE Gasoil	600.75	0.80%
NYMEX Natural Gas	3.19	-0.03%

**Precious Metals**

Gold Spot \$/Oz	1782.82	-0.03%
Silver Spot \$/Oz	25.866	-0.33%
Platinum Spot \$/Oz	1066.04	0.33%
Palladium Spot \$/Oz	2592.91	0.17%
Gold Future	1782.4	-0.03%
Silver Future	25.94	-0.48%
Platinum Future	1057.8	0.69%
Palladium Future	2583	0.97%

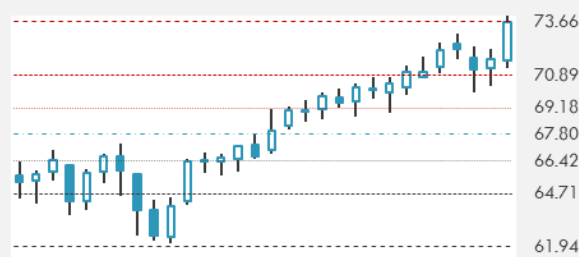
**Base Metals**

LME Aluminum	2404	0.00%
LME Copper	9180	0.00%
LME Zinc	2837	0.00%
LME Nickel	17450	0.00%
LME Lead	2157	0.00%
LME Tin	30079	0.00%

**Agricultural**

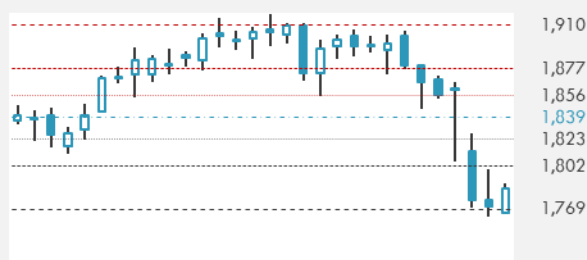
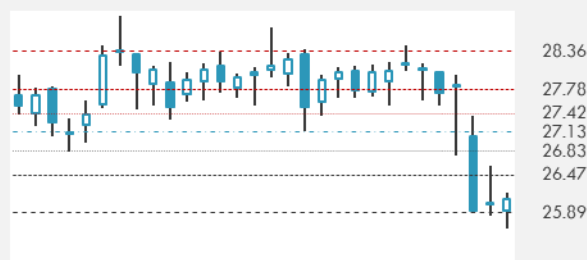
Corn CBT	561.25	0.76%
Wheat CBT	673	1.20%
Soybeans CBT	1313.25	-0.45%
Bean Meal CBT	373.6	-0.35%
Rough Rice CBT	13.03	0.08%
MDE Palm Oil	3490	2.92%
Soybean CBT	57.65	-0.48%
Coffee ICE	154.05	0.00%
Sugar #11 ICE	17.07	0.00%
Cotton #2 ICE	85.1	-0.11%
Cocoa ICE	2378	0.00%
Ethanol CME	2.46	0.00%
Lumber CME	886.5	0.00%
Orange Juice ICE	120.4	0.00%
Live Cattle CME	121.025	0.00%
Feeder Cattle CME	155.1	0.00%
Lean Hogs CME	103.675	0.00%

**COMMODITY INDEX SUPPORT & RESISTANCE**

**WTI OIL 30 DAYS SUPPORT & RESISTANCE**


- Brent oil hit \$75 a barrel for the first time in more than two years as signs of a rapidly tightening market added to the bullish outlook.
- Gold rose for a second day as Federal Reserve Chair Jerome Powell reiterated that higher inflation will likely be transitory.

Source: Bloomberg, Reuters

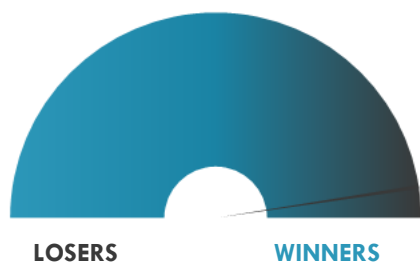
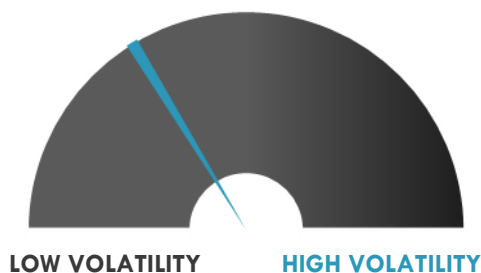
**GOLD 30 DAYS SUPPORT & RESISTANCE**

**SILVER 30 DAYS SUPPORT & RESISTANCE**


**TOP 10 WINNERS**

	Ticker	Last Price	Daily %
<b>S&amp;P 500 Stocks</b>			
APA Corp	APA	22.16	+7.31%
Hess Corp	HES	90.4	+7.17%
EOG Resources Inc	EOG	84.99	+7.16%
Marathon Oil Corp	MRO	13.44	+6.92%
Devon Energy Corp	DVN	28.6	+6.92%
Halliburton Co	HAL	23.35	+6.18%
Diamondback Energy Inc	FANG	91.5	+6.17%
Schlumberger NV	SLB	33.12	+5.85%
Occidental Petroleum	OXY	29.5	+5.39%
CF Industries Holdings	CF	51.42	+5.37%

**TOP 10 LOSERS**

	Ticker	Last Price	Daily %
<b>S&amp;P 500 Stocks</b>			
Xilinx Inc	XLNX	127.53	-3.33%
Advanced Micro Dev.	AMD	82.59	-2.43%
Biogen Inc	BIIB	380.91	-1.94%
Organon & Co	OGN	29.41	-1.90%
Enphase Energy Inc	ENPH	163.08	-1.67%
NVIDIA Corp	NVDA	737.09	-1.13%
Amazon.com Inc	AMZN	3453.96	-0.94%
Netflix Inc	NFLX	497	-0.75%
Regeneron Pharma.	REGN	534.27	-0.68%
Lennar Corp	LEN	97.6	-0.58%

**S&P 500 DISTRIBUTION**

**S&P VOLATILITY INDEX**


- Looking to cash in on the blistering rally that has doubled the stock price in the past week, Torchlight Energy discloses it upsized its stock offering to \$250M from the \$100M it planned previously.
- Citing strength in fertilizer markets, Nutrien +1.5% post-market after raising guidance for H1 adjusted EPS to \$2.30-\$2.50 from its prior outlook of \$2.00-\$2.20, as it plans to increase potash production by 1M metric tons this year.
- AFC Gamma launches an underwritten public offering of 2.75M shares of its common stock. Underwriters' 30-day option to purchase up to an additional 412,500 shares.
- Nikola files to register 18,012,845 shares on behalf of shareholder Tumim Stone Capital for potential sale. The company will not receive any proceeds from a sale if it occurs.
- Tupperware Brands says it paid down a term loan with Angelo Gordon and JPMorgan through a \$58M pre-payment. The company's board also approved a share repurchases authorization that will cover up to \$250M worth of shares.
- MicroVision has entered into a \$140M at-the-market equity offering agreement with Craig-Hallum Capital Group. It allows the company to offer and sell shares of its common stock, from time to time at its discretion, up to \$140M.
- Sanderson Farms rallies on a Wall Street Journal report that the poultry company is considering a sale.
- Betaville reports a mystery bidder as stalking Cboe Global Markets, the owner of the Chicago Board Options Exchange and BATs Global Markets.



**KEY ECONOMIC INDICATORS**

Country	Event	Surv (M)	Actual	Prior	Time
Eurozone	Consumer Confidence	-3.1	--	-5.1	17:00
Finland	Unemployment Rate	--	9.60%	9.00%	8:00
Greece	Unemployment Rate	--	--	16.20%	
Ireland	PPI MoM	--	--	0.40%	13:00
Ireland	PPI YoY	--	--	-7.00%	13:00
Ireland	Consumer Confidence Index	--	87.2	85.8	2:01
Italy	Industrial Sales MoM	--	--	1.60%	11:00
Italy	Industrial Sales WDA YoY	--	--	38.10%	11:00
Japan	Machine Tool Orders YoY	--	--	140.70%	9:00
Japan	Nationwide Dept Sales YoY	--	65.20%	167.00%	8:30
Japan	Tokyo Dept Store Sales YoY	--	77.70%	186.20%	8:30
Netherlands	Consumer Spending YoY	--	9.40%	-0.40%	7:30
Netherlands	House Price Index MoM	--	2.00%	0.90%	1:01
United Kingdom	PSNB ex Banking Groups	2.55E+10	--	3.17E+10	9:00
United Kingdom	Public Finances (PSNCR)	--	--	3.36E+10	9:00
United Kingdom	Public Sector Net Borrowing	2.43E+10	--	3.10E+10	9:00
United Kingdom	CBI Trends Total Orders	16	--	17	13:00
United States	Existing Home Sales	5.72E+06	--	5.85E+06	17:00
United States	Richmond Fed Manufact. Index	18	--	18	17:00
United States	Existing Home Sales MoM	-2.20%	--	-2.70%	17:00

Source: Bloomberg

## Banque BEMO sal

### Head Office - Private and Corporate Banking

Elias Sarkis Ave., Bemo Bldg , Ashrafieh - Lebanon  
Tel: +961 1 200 505 Fax: +961 1 217 860

### Research & Development [research@bemobank.com](mailto:research@bemobank.com)

Elias Sarkis Ave., Bemo Bldg , Ashrafieh - Lebanon  
Tel: +961 1 200 505 Fax: +961 1 217 860

#### Disclaimer:

This report is published for information purposes only. The information herein has been compiled from, or based upon sources considered to be reliable (Bloomberg, SeekingAlpha, DailyStar...), but we do not guarantee or assume responsibility for its completeness and accuracy. This document should not be construed as a solicitation to take part in any investment, or as constituting any representation or warranty on our part. This report is not to be relied upon in substitution for the exercise of specialists.

We may not have taken any steps to ensure that the securities referred to in this report are suitable for any particular investor. The investments and services contained or referred to herein are not purported to be exhaustive, any person considering an investment should seek specialist advice on the suitability of an investment.

Nothing in this report constitutes investment, legal, accounting or tax advice, or a representation that any investment or strategy is suitable or appropriate to your individual circumstances, or otherwise constitutes a personal recommendation. Clients understand that it is their responsibility to seek legal and/or tax advice regarding the legal and tax consequences of their investment transactions. The consequences of any action taken on the basis of information contained herein are solely the responsibility of the recipient.

Investment instruments are subject to risk, including possible loss of principal amount invested. Past performance should not be taken as an indication or guarantee of future performance, and no representation or warranty, express or implied, is made regarding future performance. The value of securities and financial instruments is subject to exchange rate fluctuation that may have a positive or adverse effect on the price or income of such securities or financial instruments. Some investments mentioned in this report may have a high level of volatility. High volatility investments may experience sudden and large falls in their value causing losses when that investment is realized. Some investments may not be readily realizable and it may be difficult to sell or realize those investments, similarly it may prove difficult to obtain reliable information about the value, or risks, to which such an investment is exposed.

This report may provide the addresses of websites or references. We have not reviewed any such site and takes no responsibility for the content contained therein. Such address or reference is provided solely for convenience and information. Accessing such website through this report shall be at the recipients own risk.