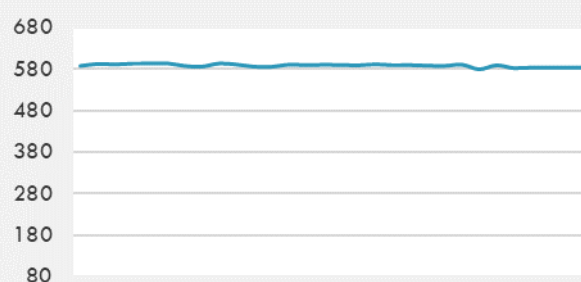
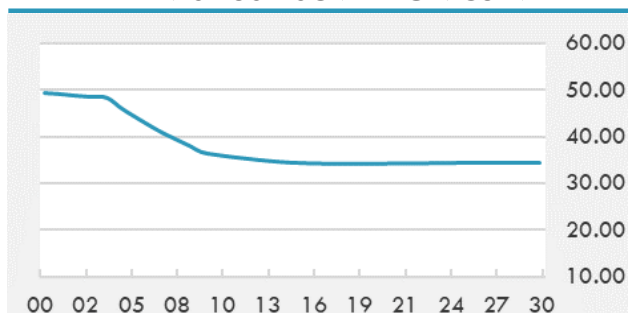


BEIRUT STOCK EXCHANGE

	Last	Daily %	YTD %	Dividend %
MSCI Lebanon	583.51	-0.07%	33.30%	
Development and Reconstruction				
Solidere A	24.64	0.12%	33.19%	
Solidere B	24.44	-0.65%	33.62%	
Banking				
Audi Listed	2.38	-0.83%	95.08%	
BLC Listed	0.93	0.00%	0.00%	
BOB Listed	17.8	0.00%	0.00%	
Byblos Listed	0.89	-1.11%	67.92%	
BEMO Listed	1.2	0.00%	0.00%	
BLOM Listed	3.38	0.00%	63.29%	
Trading				
RYMCO	3.19	0.00%	0.00%	
Industrial				
Holcim	17	0.00%	17.24%	
Ciments Blancs	4.5	0.00%	9.76%	

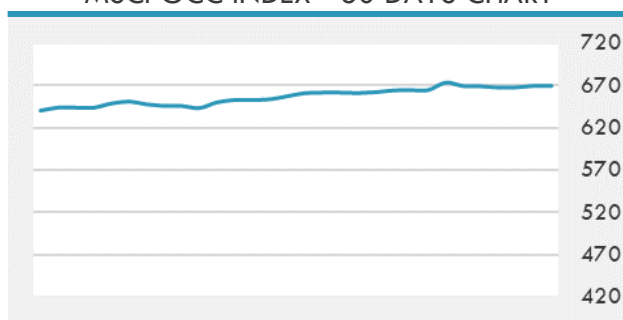
MSCI LEBANON INDEX - 30 DAYS CHART

LEBANESE USD SOVEREIGN CURVE


- The Economy Ministry raised the price of subsidized bread for the fifth time in a year Tuesday, as the country's economic and financial crisis keeps deepening. The ministry said 910 grams (2 pounds) of bread will be sold for 3,250 pounds, up from 2,750 pounds. It said the reason behind the latest increase is that the Central Bank has ended sugar subsidies, which adds to the cost of bread production.
- The Tadawul All Share Index of the Saudi Exchange ended Tuesday higher by 0.3% or 32.46 points at 10,891.64 points.

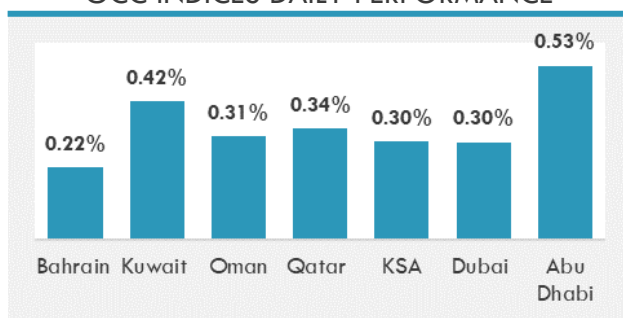
Source: Daily Star, Gulf Business, Mubasher, Bloomberg, Businessnews LB

GCC EQUITY INDICES

	Last Price	Daily %	YTD %
Bahrain	1572.44	0.22%	5.55%
Kuwait	6445.8	0.42%	16.22%
Oman	4035.49	0.31%	10.30%
Qatar	10776.49	0.34%	3.26%
KSA	10891.64	0.30%	25.34%
Dubai	2856.39	0.30%	14.62%
Abu Dhabi	6650.95	0.53%	31.82%

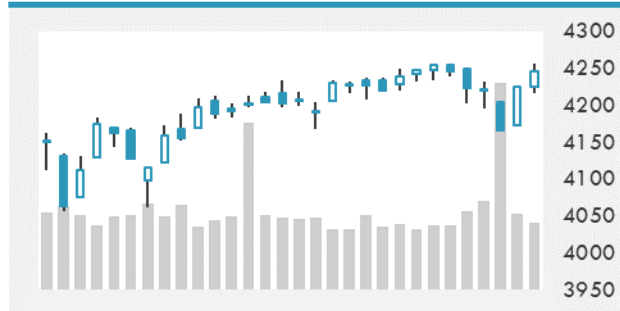
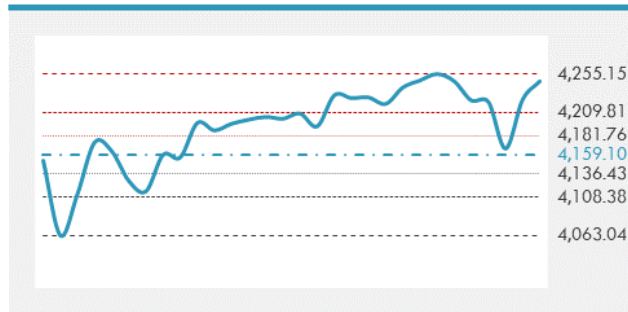
MSCI GCC INDEX - 30 DAYS CHART

LOCAL/GCC FOREIGN EXCHANGE

	Cross	Last Price
Lebanese Pound Spot	USD/LBP	1515.5
Bahraini Dinar Spot	USD/BHD	0.37699
Kuwaiti Dinar Spot	USD/KWD	0.3012
Omani Rial Spot	USD/OMR	0.385
Qatari Riyal Spot	USD/QAR	3.6413
Saudi Riyal Spot	USD/SAR	3.75
UAE Dirham Spot	USD/AED	3.673

GCC INDICES DAILY PERFORMANCE


UNITED STATES EQUITY MARKET INDICES

	Last Price	Daily %	YTD %	Δ10D Vol
Major Indices				
Dow Jones	33945.58	0.00%	10.91%	0.11%
S&P 500	4246.44	0.00%	13.06%	0.25%
Nasdaq	14253.27	0.00%	10.59%	0.32%
Sectors Indices				
Discretionary	1409.61	0.00%	8.22%	0.45%
Staples	715.24	0.00%	2.72%	0.02%
Energy	411.46	0.00%	43.80%	0.24%
Financials	598.25	0.00%	21.98%	0.12%
Healthcare	1458.77	0.00%	10.18%	-0.62%
Industrials	859.57	0.00%	14.68%	-0.38%
IT	2540.85	0.00%	10.89%	0.30%
Materials	517.68	0.00%	13.60%	0.58%
Com. Services	262.36	0.00%	18.22%	0.51%
Utilities	325.63	0.00%	2.06%	-0.43%
Real Estate	280.18	0.00%	22.94%	0.09%

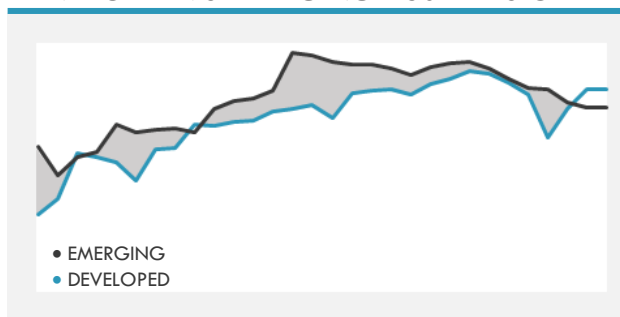
S&P 500 INDEX - 30 DAYS CHART

S&P 500 SUPPORT & RESISTANCE


- The S&P 500 Index closed near a record as a dovish Fed eased concerns over inflation and potentially quicker hikes in interest rates.
- European shares closed higher after fluctuating between gains and losses as investors considered valuations ahead of Federal Reserve Chair Jerome Powell's appearance in front of lawmakers.
- Asian stocks gained, with Japanese shares leading the advance, as investor concerns over the pace of U.S. monetary policy tightening and rising inflation eased.

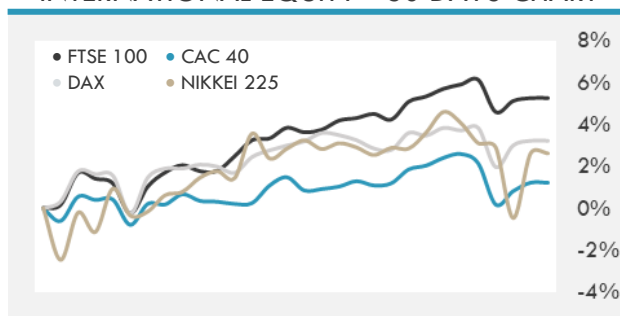
Source: Bloomberg, Financial Times, Reuters

INTERNATIONAL MARKETS INDICES

	Last Price	Daily %	YTD %	Δ10D Vol
World	1745.8	0.00%	10.60%	0.53%
Developed	3001.14	0.00%	11.56%	0.63%
Emerging	1346.84	0.00%	4.30%	-0.03%
Frontier	2557.88	0.00%	-1.31%	-0.14%
Europe	151.27	0.00%	14.51%	0.05%
Latin America	2621.84	0.00%	6.94%	0.10%
Asia Pacific	205.97	0.00%	3.03%	1.57%

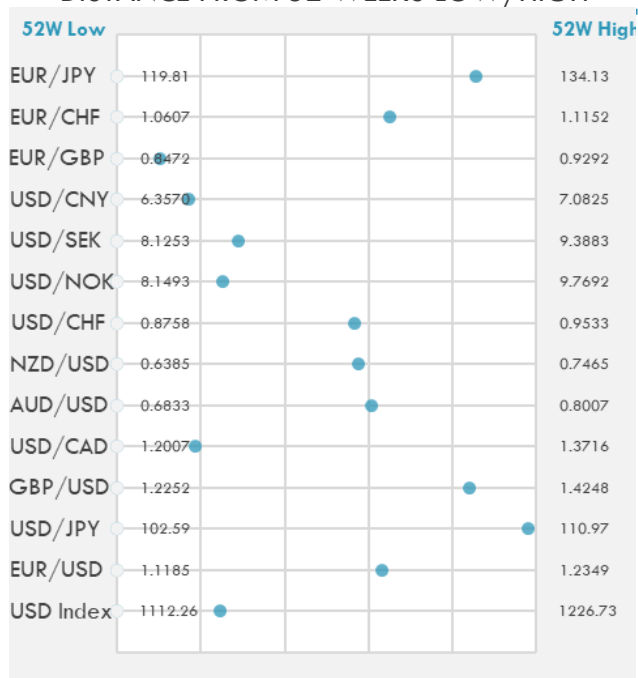
DEVELOPED VS EMERGING - 30 DAYS CHART

INTERNATIONAL EQUITY INDICES

	Last Price	Daily %	YTD %	Δ10D Vol
EuroStoxx 50	4123.13	0.00%	16.06%	0.05%
FTSE 100	7090.01	0.00%	9.74%	0.17%
CAC 40	6611.5	0.00%	19.10%	-0.02%
DAX	15636.33	0.00%	13.98%	-0.13%
Swiss SMI	11982.48	0.00%	11.95%	-1.60%
Nikkei 225	28882.78	0.00%	5.24%	7.14%
CSI 300	5169.76	0.93%	-0.80%	0.73%

INTERNATIONAL EQUITY - 30 DAYS CHART


FOREIGN EXCHANGE MARKET

	Last Price	Daily %	Δ10D	Vol 25	ΔRR
Major USD Cross Rate					
USD Index	1140.32	0.16%	-0.30%	-	
EUR/USD	1.1919	-0.18%	-0.04%	-0.218	
USD/JPY	110.8	0.14%	-0.51%	-0.113	
GBP/USD	1.393	-0.14%	-0.64%	-0.418	
USD/CAD	1.2325	0.15%	-0.18%	0.513	
AUD/USD	0.7546	-0.11%	-0.50%	-0.750	
NZD/USD	0.7008	-0.24%	-0.49%	-0.735	
USD/CHF	0.9197	0.19%	-0.32%	0.170	
USD/NOK	8.5584	0.25%	-0.15%	1.175	
USD/SEK	8.4926	0.18%	-0.16%	0.433	
USD/CNY	6.4815	0.01%	0.10%	0.325	
Major EUR Cross Rate					
EUR/GBP	0.85567	-0.05%	-0.54%	0.163	
EUR/CHF	1.09618	-0.01%	-0.29%	0.288	
EUR/JPY	132.07	-0.04%	-0.08%	-0.428	

DISTANCE FROM 52 WEEKS LOW/HIGH


- A gauge of the dollar headed for its first gain in three sessions as Federal Reserve Chair Jerome Powell's pledge to be patient in raising interest rates boosted the U.S. outlook.
- Option gauges in euro-dollar suggest traders see the common currency extending its recent run south yet the pace of losses slowing.
- Yen steadied near recent lows as Federal Reserve officials downplayed concerns about U.S. inflation and interest rate hike prospects.

Source: Bloomberg, Financial Times, Reuters

EUR/USD 30 DAYS SUPPORT & RESISTANCE

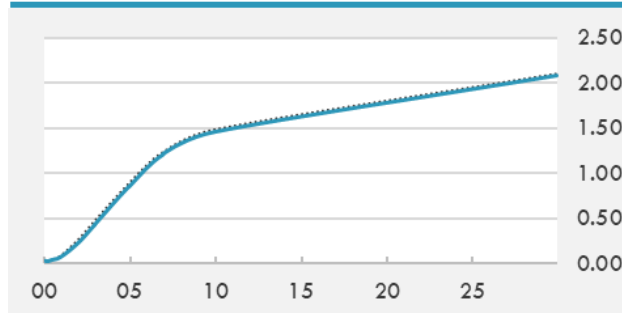
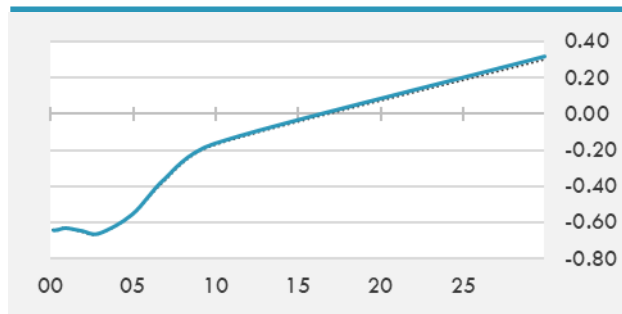
GBP/USD 30 DAYS SUPPORT & RESISTANCE

USD/JPY 30 DAYS SUPPORT & RESISTANCE

USD/CAD 30 DAYS SUPPORT & RESISTANCE


GLOBAL BOND INDICES

	Yield	ΔYield (in Bps)
Benchmark Indices		
US 10 Years Benchmark	1.4632	-0.025
EU 10 Years Benchmark	-0.164	0.007
UK 10 Years Benchmark	0.78	0.011
Sovereign Bonds		
US Treasury Bond	0.594	0
Eurozone Sovereign Bond	-0.428	0
Japan Sovereign Bond	-0.104	0
Corporate Bonds		
US Corporate TR	2.062	-0.019
US High Yield Bond TR	3.930	0.011
EUR Aggregate Corporate TR	0.360	0.007
EUR High Yield TR	3.017	-0.003
USD Emerging Market IG & HY	3.785	-0.004

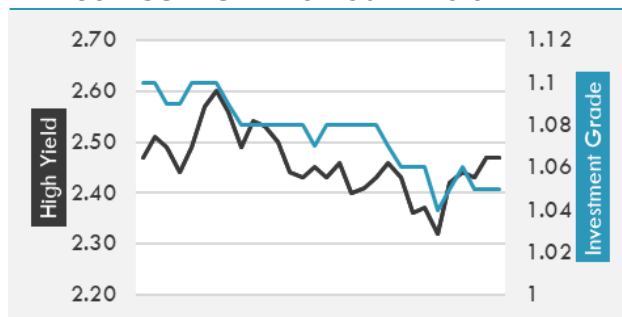
US TREASURIES YIELD CURVE

EUR GENERIC YIELD CURVE


- U.S. Treasury yields mostly fell on Tuesday, and the 2-year notching its biggest daily rate decline since mid-March, after Federal Reserve Chairman Jerome Powell reiterated that the central bank would be patient before pulling back from its ultra-easy policy stance.
- Italian bonds edge lower for a fourth day, the longest run of declines in a month, as orders for Spain's EU8b sale of new 10-year debt via banks fall short of last year's record EU97b. Bonds bear steepen for a second day as haven demand is unwound. Gilts also bear steepen but beyond the belly with the U.K. 5s30s curve poised to rise by the most since March.

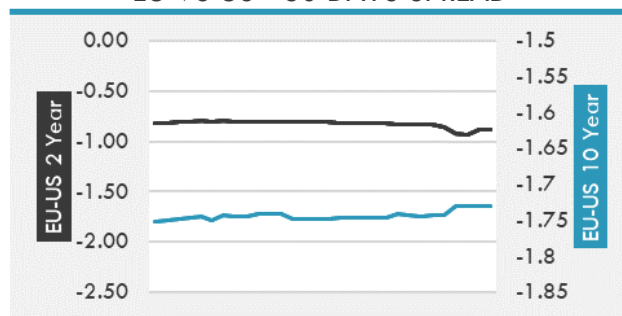
Source: Bloomberg, Financial Times, Economic times, Reuters

OVERNIGHT RATES - SWAPS

	Yield	ΔYield (in Bps)
3M USD LIBOR	0.138	0.000
3M EUR EURIBOR	-0.542	0.000
3M GBP LIBOR	0.081	0.000
3Y USD SWAP	0.529	-0.021
5Y USD SWAP	0.921	-0.021
10Y USD SWAP	1.431	-0.021
30Y USD SWAP	1.753	-0.029

USD CORPORATES - 30 DAYS SPREAD

FIXED INCOME SPREADS

	Spread	ΔSpread (in Bps)
USD 3M vs 10Y Spread	1.425	-0.023
USD 2Y vs 10Y Spread	1.231	0.001
USD IG Spread	1.050	0.000
USD HY Spread	2.470	0.040
EU vs US 10Y Spread	-1.642	0.006
EU vs US 2Y Spread	-0.881	0.050
EM vs Benchmark Spread	249.800	0.000

EU VS US - 30 DAYS SPREAD


GLOBAL COMMODITIES MARKET

	Last Price	Daily %
Commodity Index	91.93	0.45%

Energy

WTI Crude Future	73.22	0.51%
Brent Crude Future	75.28	0.63%
NYMEX Gasoline	223.28	0.38%
NYMEX Heat Oil	215.87	0.36%
ICE Gasoil	604.25	0.67%
NYMEX Natural Gas	3.273	0.46%

Precious Metals

Gold Spot \$/Oz	1780.62	0.11%
Silver Spot \$/Oz	25.9358	0.61%
Platinum Spot \$/Oz	1088.27	0.91%
Palladium Spot \$/Oz	2589.22	1.04%
Gold Future	1780.6	0.18%
Silver Future	26.025	0.49%
Platinum Future	1085.3	1.16%
Palladium Future	2589.5	1.20%

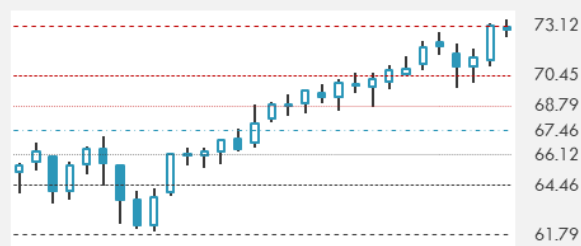
Base Metals

LME Aluminum	2425	0.00%
LME Copper	9301	0.00%
LME Zinc	2862	0.00%
LME Nickel	17744	0.00%
LME Lead	2175	0.00%
LME Tin	30399	0.00%

Agricultural

Corn CBT	539.5	0.09%
Wheat CBT	660.25	0.80%
Soybeans CBT	1307.5	0.40%
Bean Meal CBT	364.8	-0.52%
Rough Rice CBT	13.38	-0.59%
MDE Palm Oil	3545	4.57%
Soybean CBT	59.07	1.86%
Coffee ICE	152.1	0.00%
Sugar #11 ICE	16.74	0.00%
Cotton #2 ICE	85.95	0.36%
Cocoa ICE	2396	0.00%
Ethanol CME	2.48	0.00%
Lumber CME	866.4	0.00%
Orange Juice ICE	121.45	0.00%
Live Cattle CME	123.175	0.00%
Feeder Cattle CME	158.35	0.00%
Lean Hogs CME	103.7	0.00%

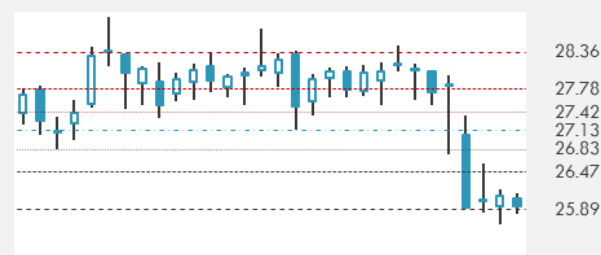
COMMODITY INDEX SUPPORT & RESISTANCE

WTI OIL 30 DAYS SUPPORT & RESISTANCE


- Oil rose above \$73 a barrel after an industry report pointed to another decline in U.S. crude stockpiles, adding to a bullish outlook.
- Gold steadied as investors weighed Federal Reserve Chair Jerome Powell's comments on inflation risks.

Source: Bloomberg, Reuters

GOLD 30 DAYS SUPPORT & RESIENCE

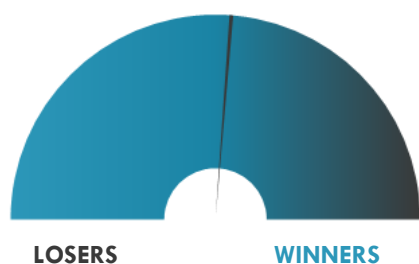
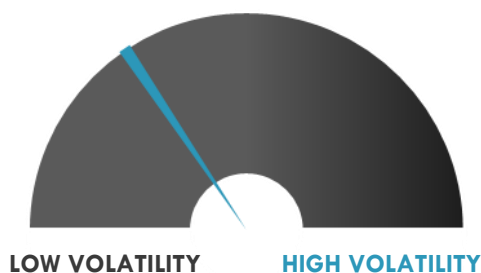
SILVER 30 DAYS SUPPORT & RESISTANCE


TOP 10 WINNERS

	Ticker	Last Price	Daily %
S&P 500 Stocks			
L Brands Inc	LB	69.09	+5.02%
Etsy Inc	ETSY	177.98	+4.21%
Cintas Corp	CTAS	374.5	+3.23%
Twitter Inc	TWTR	63.78	+2.94%
Tractor Supply Co	TSCO	180.43	+2.89%
Live Nation Entertain.	LYV	91.52	+2.76%
Enphase Energy Inc	ENPH	167.3	+2.59%
NVIDIA Corp	NVDA	755.47	+2.49%
Netflix Inc	NFLX	508.82	+2.38%
Best Buy Co Inc	BBY	111.04	+2.17%

TOP 10 LOSERS

	Ticker	Last Price	Daily %
S&P 500 Stocks			
Iron Mountain Inc	IRM	43.76	-3.53%
Evergy Inc	EVRG	61.88	-2.87%
Kimco Realty Corp	KIM	20.56	-2.19%
Carnival Corp	CCL	28.06	-2.13%
Royal Caribbean	RCL	85.66	-1.99%
Hess Corp	HES	88.62	-1.97%
Vornado Realty Trust	VNO	47.26	-1.81%
Las Vegas Sands Corp	LVS	53.6	-1.78%
Norwegian Cruise Line	NCLH	30.84	-1.72%
Biogen Inc	BIIB	374.4	-1.71%

S&P 500 DISTRIBUTION

S&P VOLATILITY INDEX


- Clean Energy Fuels +5% post-market after disclosing it contributed \$50M to its 50-50 joint venture with BP and forced the conversion of BP's Class B units into Class A units.
- Global Self Storage commenced an underwritten public offering of its common stock; underwriters granted 45-day option to purchase up to an additional 15% of shares.
- WillScot Mobile Mini trades 1.9% down after hours on launching an underwritten, secondary offering of 14M shares of its common stock, par value \$0.0001/share.
- Plug Power (+13.1%) pushed to its best level of the day and highest in more than two months following mixed Q1 results, and President/CEO Andy Marsh said on the earnings conference call that Amazon had bought the company's electrolyzers.
- Medallia shares closed up 1.7% after reporter sources said private equity firms Vista Equity Partners and Thoma Bravo have shown interest in acquiring the company.
- BioXcel Therapeutics announced that it has commenced an underwritten public offering of \$100M. Expects to grant the underwriters a 30-day option to purchase up to \$15M of additional shares.
- Lidar sensor company Quanergy announced plans to go public through a reverse merger with SPAC CITIC Capital Acquisition Corp. in a \$1.4B deal.
- Twitter (+2.8%) is accepting applications from U.S. users for limited tests of its Super Follows and Ticketed Spaces features.
- Proterra (+9.1%) announces a new fleet electrification project with Miami-Dade County.

KEY ECONOMIC INDICATORS

Country	Event	Surv (M)	Actual	Prior	Time
Canada	Retail Sales MoM	-4.90%	--	3.60%	15:30
Eurozone	Markit Eurozone Manufacturing PMI	62.3	--	63.1	11:00
Eurozone	Markit Eurozone Composite PMI	58.8	--	57.1	11:00
France	Markit France Manufacturing PMI	59	--	59.4	10:15
France	Markit France Services PMI	59.5	--	56.6	10:15
France	Markit France Composite PMI	59	--	57	10:15
Germany	Markit/BME Germany Manufacturing PMI	63	--	64.4	10:30
Germany	Markit Germany Services PMI	55.7	--	52.8	10:30
Germany	Markit/BME Germany Composite PMI	57.6	--	56.2	10:30
Ireland	Unemployment Rate	--	--	5.80%	13:00
Japan	Jibun Bank Japan PMI Mfg	--	51.5	53	3:30
Japan	Jibun Bank Japan PMI Services	--	47.2	46.5	3:30
Japan	Jibun Bank Japan PMI Composite	--	47.8	48.8	3:30
Lithuania	Industrial Production YoY	--	--	25.90%	9:00
United Kingdom	Markit UK PMI Manufacturing SA	64	--	65.6	11:30
United Kingdom	Markit/CIPS UK Services PMI	62.8	--	62.9	11:30
United States	MBA Mortgage Applications	--	--	4.20%	14:00
United States	New Home Sales	865000	--	863000	17:00
United States	Markit US Manufacturing PMI	61.5	--	62.1	16:45
United States	Current Account Balance	-2.06E+11	--	-1.89E+11	15:30

Source: Bloomberg

Banque BEMO sal

Head Office - Private and Corporate Banking

Elias Sarkis Ave., Bemo Bldg , Ashrafieh - Lebanon
Tel: +961 1 200 505 Fax: +961 1 217 860

Research & Development research@bemobank.com

Elias Sarkis Ave., Bemo Bldg , Ashrafieh - Lebanon
Tel: +961 1 200 505 Fax: +961 1 217 860

Disclaimer:

This report is published for information purposes only. The information herein has been compiled from, or based upon sources considered to be reliable (Bloomberg, SeekingAlpha, DailyStar...), but we do not guarantee or assume responsibility for its completeness and accuracy. This document should not be construed as a solicitation to take part in any investment, or as constituting any representation or warranty on our part. This report is not to be relied upon in substitution for the exercise of specialists.

We may not have taken any steps to ensure that the securities referred to in this report are suitable for any particular investor. The investments and services contained or referred to herein are not purported to be exhaustive, any person considering an investment should seek specialist advice on the suitability of an investment.

Nothing in this report constitutes investment, legal, accounting or tax advice, or a representation that any investment or strategy is suitable or appropriate to your individual circumstances, or otherwise constitutes a personal recommendation. Clients understand that it is their responsibility to seek legal and/or tax advice regarding the legal and tax consequences of their investment transactions. The consequences of any action taken on the basis of information contained herein are solely the responsibility of the recipient.

Investment instruments are subject to risk, including possible loss of principal amount invested. Past performance should not be taken as an indication or guarantee of future performance, and no representation or warranty, express or implied, is made regarding future performance. The value of securities and financial instruments is subject to exchange rate fluctuation that may have a positive or adverse effect on the price or income of such securities or financial instruments. Some investments mentioned in this report may have a high level of volatility. High volatility investments may experience sudden and large falls in their value causing losses when that investment is realized. Some investments may not be readily realizable and it may be difficult to sell or realize those investments, similarly it may prove difficult to obtain reliable information about the value, or risks, to which such an investment is exposed.

This report may provide the addresses of websites or references. We have not reviewed any such site and takes no responsibility for the content contained therein. Such address or reference is provided solely for convenience and information. Accessing such website through this report shall be at the recipients own risk.