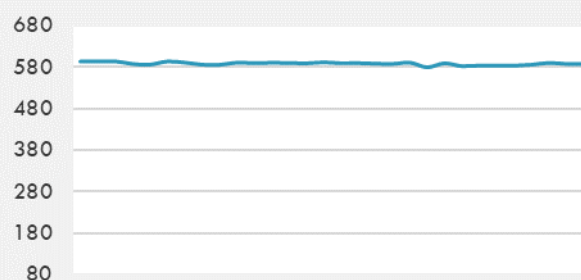
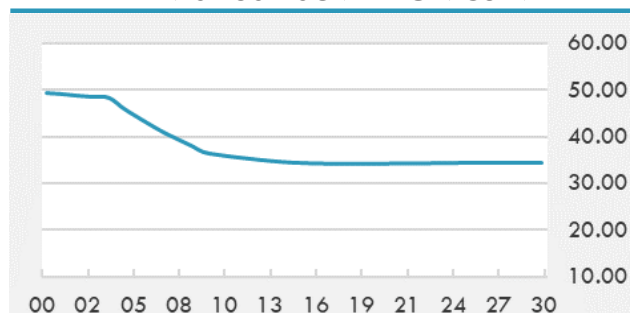


BEIRUT STOCK EXCHANGE

	Last	Daily %	YTD %	Dividend %
MSCI Lebanon	588.18	-0.44%	34.37%	
Development and Reconstruction				
Solidere A	24.8	-0.72%	34.05%	
Solidere B	24.75	0.45%	35.32%	
Banking				
Audi Listed	2.16	0.00%	77.05%	
BLC Listed	0.93	0.00%	0.00%	
BOB Listed	17.8	0.00%	0.00%	
Byblos Listed	0.92	3.37%	73.58%	
BEMO Listed	1.2	0.00%	0.00%	
BLOM Listed	3.38	0.00%	63.29%	
Trading				
RYMCO	3.19	0.00%	0.00%	
Industrial				
Holcim	17	0.00%	17.24%	
Ciments Blancs	4.5	0.00%	9.76%	

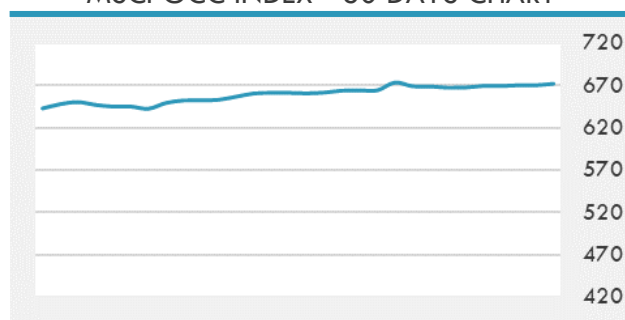
MSCI LEBANON INDEX - 30 DAYS CHART

LEBANESE USD SOVEREIGN CURVE


- FFA Private Bank Group is planning to relocate its headquarters to the Dubai International Financial Center, in accordance with its five year strategic plan which was submitted to the Central Bank of Lebanon (BDL) in the fall 2020.
- The Tadawul All Share Index of the Saudi Exchange ended Sunday in the green zone at 10,966.71 points, after rising by 0.43% or 47.03 points.
- HSBC has joined the UAE KYC (Know Your Customer) blockchain consortium to become the fourth founding member bank to go live on the platform.

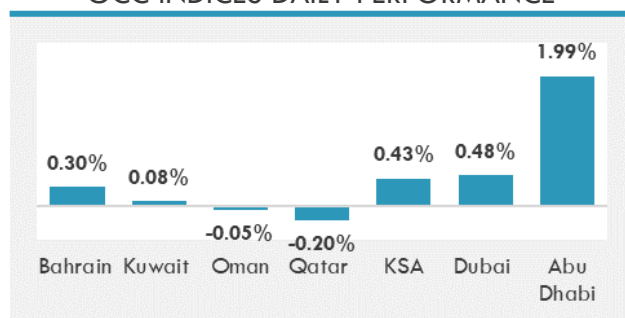
Source: Daily Star, Gulf Business, Mubasher, Bloomberg, Businessnews LB

GCC EQUITY INDICES

	Last Price	Daily %	YTD %
Bahrain	1579.15	0.30%	6.31%
Kuwait	6459.66	0.08%	16.57%
Oman	4044.79	-0.05%	10.55%
Qatar	10739.81	-0.20%	2.91%
KSA	10966.71	0.43%	26.21%
Dubai	2870.69	0.48%	15.20%
Abu Dhabi	6706.66	1.99%	32.93%

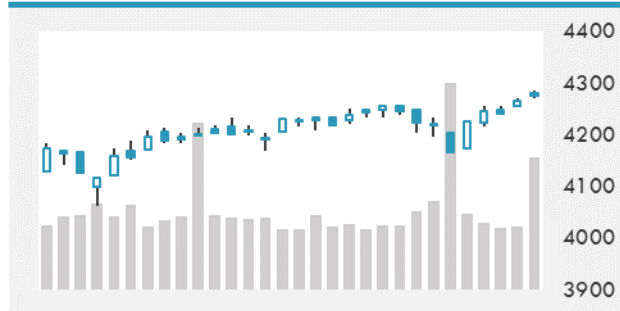
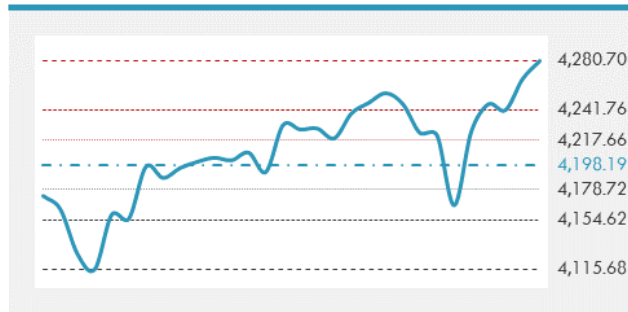
MSCI GCC INDEX - 30 DAYS CHART

LOCAL/GCC FOREIGN EXCHANGE

	Cross	Last Price
Lebanese Pound Spot	USD/LBP	1515.5
Bahraini Dinar Spot	USD/BHD	0.37699
Kuwaiti Dinar Spot	USD/KWD	0.30105
Omani Rial Spot	USD/OMR	0.38501
Qatari Riyal Spot	USD/QAR	3.641
Saudi Riyal Spot	USD/SAR	3.7502
UAE Dirham Spot	USD/AED	3.673

GCC INDICES DAILY PERFORMANCE


UNITED STATES EQUITY MARKET INDICES

	Last Price	Daily %	YTD %	Δ10D Vol
Major Indices				
Dow Jones	34433.84	0.00%	12.51%	0.50%
S&P 500	4280.7	0.00%	13.97%	0.08%
Nasdaq	14360.39	0.00%	11.42%	-0.35%
Sectors Indices				
Discretionary	1424.04	0.00%	9.33%	-0.04%
Staples	719.22	0.00%	3.29%	1.04%
Energy	418.03	0.00%	46.09%	-0.06%
Financials	614.75	0.00%	25.35%	0.69%
Healthcare	1466.12	0.00%	10.73%	0.17%
Industrials	865.68	0.00%	15.49%	-0.07%
IT	2550.53	0.00%	11.31%	-0.66%
Materials	516.09	0.00%	13.25%	-0.42%
Com. Services	264.16	0.00%	19.03%	-0.56%
Utilities	325.54	0.00%	2.03%	1.58%
Real Estate	279.71	0.00%	22.73%	0.32%

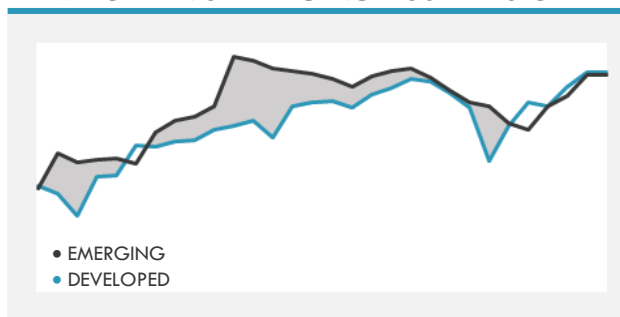
S&P 500 INDEX - 30 DAYS CHART

S&P 500 SUPPORT & RESISTANCE


- U.S. stock-index futures hovered near records as investors weighed the growth outlook following a tentative bipartisan agreement on infrastructure spending.
- European equities ended slightly higher on Friday, adding to their best weekly gain since May 7, amid broad economic hopes after U.S. President Joe Biden secured a \$579 billion infrastructure deal.
- Asian equities drifted lower as investors awaited fresh signs on the health of the reflation trade while monitoring the latest moves around the region to contain the coronavirus.

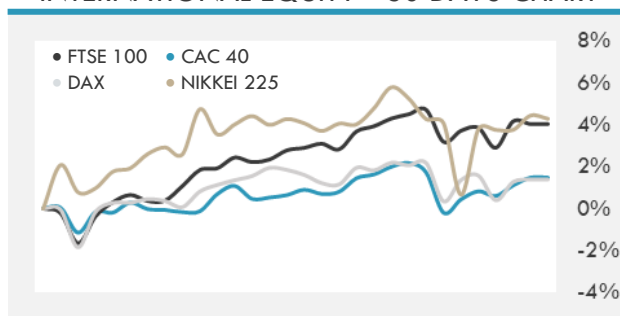
Source: Bloomberg, Financial Times, Reuters

INTERNATIONAL MARKETS INDICES

	Last Price	Daily %	YTD %	Δ10D Vol
World	1763.29	0.00%	11.70%	0.25%
Developed	3024.94	0.00%	12.45%	0.12%
Emerging	1379.59	0.00%	6.84%	1.46%
Frontier	2592.18	0.00%	0.01%	1.00%
Europe	151.74	0.00%	14.87%	-0.02%
Latin America	2664.41	0.00%	8.67%	0.19%
Asia Pacific	209.27	0.00%	4.68%	1.54%

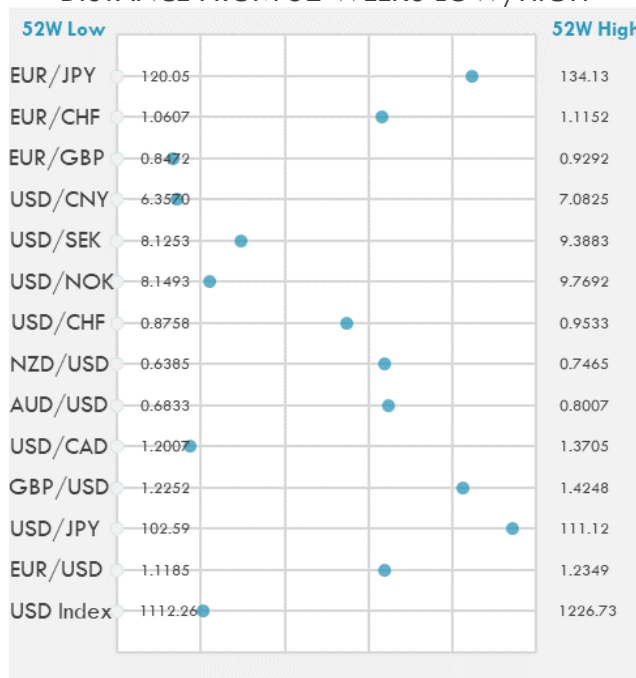
DEVELOPED VS EMERGING - 30 DAYS CHART

INTERNATIONAL EQUITY INDICES

	Last Price	Daily %	YTD %	Δ10D Vol
EuroStoxx 50	4120.66	0.00%	15.99%	-0.03%
FTSE 100	7136.07	0.00%	10.46%	0.14%
CAC 40	6622.87	0.00%	19.30%	-0.03%
DAX	15607.97	0.00%	13.77%	0.03%
Swiss SMI	11999.7	0.00%	12.11%	0.00%
Nikkei 225	29021.67	-0.15%	5.75%	-0.07%
CSI 300	5244.93	0.09%	0.65%	2.66%

INTERNATIONAL EQUITY - 30 DAYS CHART


FOREIGN EXCHANGE MARKET

	Last Price	Daily %	Δ10D	Vol 25	ΔRR
Major USD Cross Rate					
USD Index	1135.86	0.05%	0.01%	-	
EUR/USD	1.1927	-0.07%	-0.08%	-0.073	
USD/JPY	110.65	-0.09%	0.07%	0.088	
GBP/USD	1.3896	0.12%	0.16%	-0.260	
USD/CAD	1.2303	0.09%	-0.08%	0.423	
AUD/USD	0.7594	0.05%	0.02%	-0.585	
NZD/USD	0.7074	0.01%	-0.06%	-0.615	
USD/CHF	0.9183	0.11%	-0.34%	0.223	
USD/NOK	8.5074	0.12%	-0.03%	1.040	
USD/SEK	8.4996	0.09%	-0.03%	0.395	
USD/CNY	6.4612	0.08%	-0.34%	0.450	
Major EUR Cross Rate					
EUR/GBP	0.85828	-0.18%	-0.13%	0.058	
EUR/CHF	1.09518	0.07%	-0.13%	0.305	
EUR/JPY	131.97	-0.21%	-0.04%	-0.250	

DISTANCE FROM 52 WEEKS LOW/HIGH


- The dollar and yen climbed as the spread of coronavirus variants in Asia Pacific and wider lockdowns fueled haven bids.
- The New Zealand dollar dips as the government extends movement restrictions in the Wellington region for two days.
- The Chinese yuan snaps its three-day gaining streak along with other emerging Asian currencies on the back of a stronger dollar.

Source: Bloomberg, Financial Times, Reuters

EUR/USD 30 DAYS SUPPORT & RESISTANCE

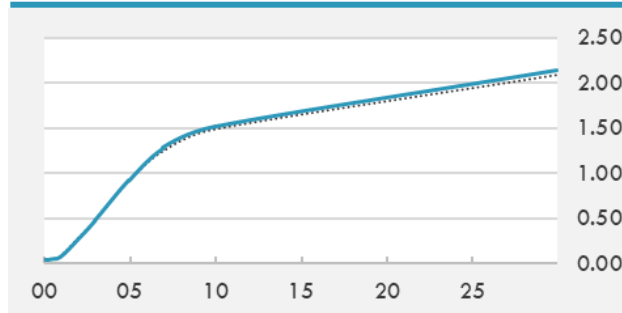
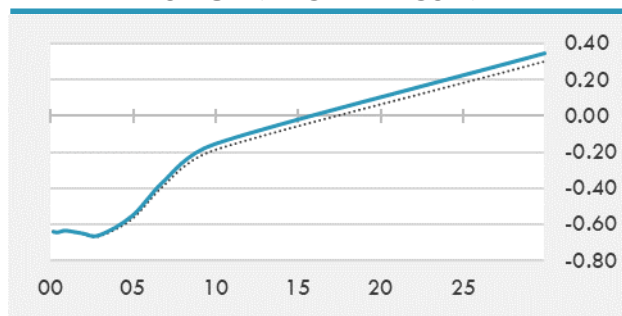
GBP/USD 30 DAYS SUPPORT & RESISTANCE

USD/JPY 30 DAYS SUPPORT & RESISTANCE

USD/CAD 30 DAYS SUPPORT & RESISTANCE


GLOBAL BOND INDICES

	Yield	ΔYield (in Bps)
Benchmark Indices		
US 10 Years Benchmark	1.5241	0.032
EU 10 Years Benchmark	-0.155	0.033
UK 10 Years Benchmark	0.778	0.037
Sovereign Bonds		
US Treasury Bond	0.594	0
Eurozone Sovereign Bond	-0.428	0
Japan Sovereign Bond	-0.104	0
Corporate Bonds		
US Corporate TR	2.098	0.018
US High Yield Bond TR	3.854	-0.034
EUR Aggregate Corporate TR	0.363	0.017
EUR High Yield TR	2.966	-0.001
USD Emerging Market IG & HY	3.810	0.005

US TREASURIES YIELD CURVE

EUR GENERIC YIELD CURVE


- Japanese government bond yields edged higher on Monday tracking U.S. Treasury yields, while markets shrugged off the Bank of Japan's weak bond-purchase operation.
- Last Friday, Euro-area long-end bond curves got pressured lower and swap spreads tightened with expectations for a wave of long-dated issuance this week from France, Spain and Belgium, as well an expected NGEU syndication.

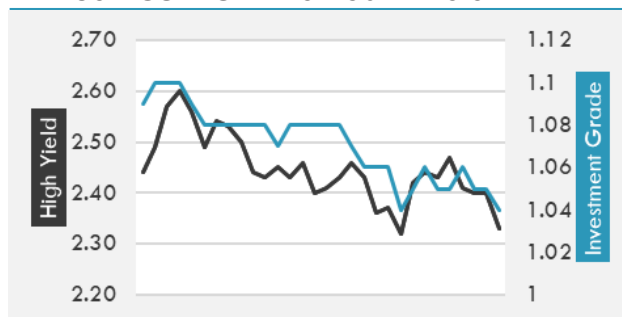
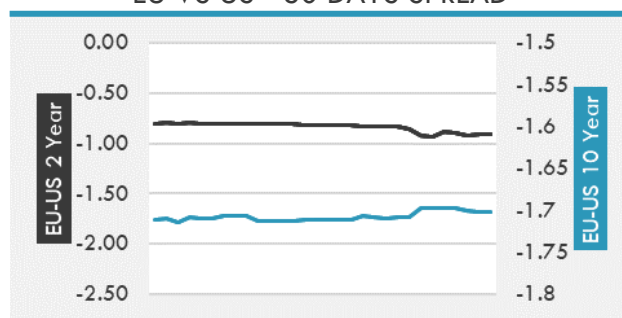
OVERNIGHT RATES - SWAPS

	Yield	ΔYield (in Bps)
3M USD LIBOR	0.146	0.000
3M EUR EURIBOR	-0.538	0.000
3M GBP LIBOR	0.081	-0.001
3Y USD SWAP	0.578	0.006
5Y USD SWAP	0.981	0.010
10Y USD SWAP	1.486	0.024
30Y USD SWAP	1.824	0.038

FIXED INCOME SPREADS

	Spread	ΔSpread (in Bps)
USD 3M vs 10Y Spread	1.472	0.036
USD 2Y vs 10Y Spread	1.254	0.032
USD IG Spread	1.050	0.000
USD HY Spread	2.400	0.000
EU vs US 10Y Spread	-1.679	-0.004
EU vs US 2Y Spread	-0.913	0.003
EM vs Benchmark Spread	249.900	0.000

Source: Bloomberg, Financial Times, Economic times, Reuters

USD CORPORATES - 30 DAYS SPREAD

EU VS US - 30 DAYS SPREAD


GLOBAL COMMODITIES MARKET

	Last Price	Daily %
Commodity Index	92.71	0.30%

Energy

WTI Crude Future	74.02	-0.04%
Brent Crude Future	76.1	-0.11%
NYMEX Gasoline	225.8	-0.26%
NYMEX Heat Oil	214.15	-0.36%
ICE Gasoil	607.5	0.25%
NYMEX Natural Gas	3.523	0.77%

Precious Metals

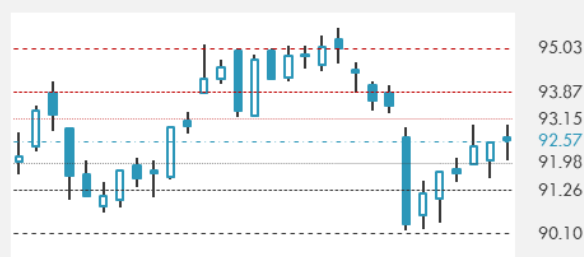
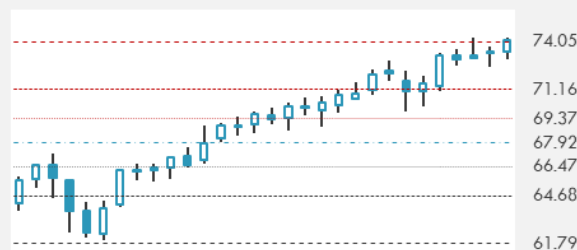
Gold Spot \$/Oz	1783.69	0.13%
Silver Spot \$/Oz	26.1897	0.34%
Platinum Spot \$/Oz	1113.97	0.29%
Palladium Spot \$/Oz	2651.5	0.42%
Gold Future	1783.9	0.34%
Silver Future	26.3	0.67%
Platinum Future	1113.1	0.67%
Palladium Future	2651	0.52%

Base Metals

LME Aluminum	2486	0.00%
LME Copper	9414	0.00%
LME Zinc	2908	0.00%
LME Nickel	18523	0.00%
LME Lead	2220	0.00%
LME Tin	30774	0.00%

Agricultural

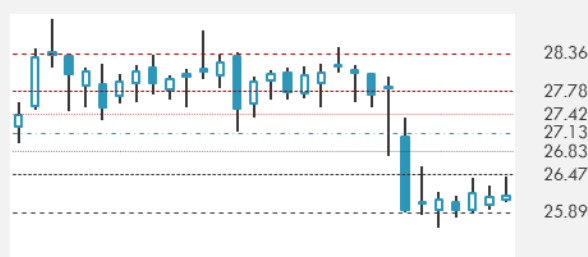
Corn CBT	522.75	0.67%
Wheat CBT	647.75	1.09%
Soybeans CBT	1285.5	1.24%
Bean Meal CBT	359.3	1.24%
Rough Rice CBT	13.49	-0.15%
MDE Palm Oil	3484	-1.02%
Soybean CBT	57.91	1.17%
Coffee ICE	157.8	0.00%
Sugar #11 ICE	17.31	0.00%
Cotton #2 ICE	86.9	-0.32%
Cocoa ICE	2380	0.00%
Ethanol CME	2.4	0.00%
Lumber CME	774	0.00%
Orange Juice ICE	122.75	0.00%
Live Cattle CME	122.8	0.00%
Feeder Cattle CME	159.55	0.00%
Lean Hogs CME	99.775	0.00%

COMMODITY INDEX SUPPORT & RESISTANCE

WTI OIL 30 DAYS SUPPORT & RESISTANCE


- An OPEC+ meeting dominates the agenda in energy markets. The next few days will provide a host of clues on whether that upward run can be sustained.
- Gold steadied as investors weighed comments by a Federal Reserve official on monetary policy amid signs of easing inflation.

Source: Bloomberg, Reuters

GOLD 30 DAYS SUPPORT & RESISTANCE

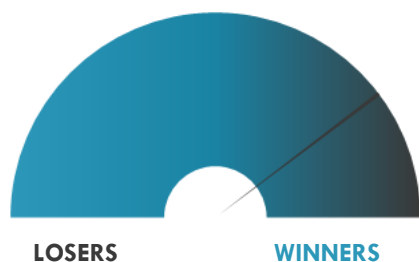
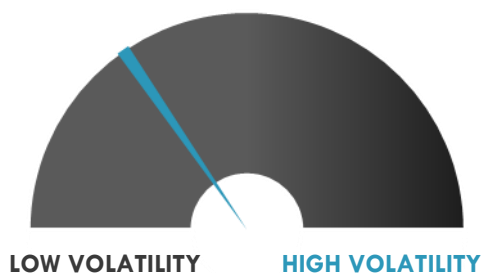
SILVER 30 DAYS SUPPORT & RESISTANCE


TOP 10 WINNERS

	Ticker	Last Price	Daily %
S&P 500 Stocks			
NIKE Inc	NKE	154.35	+15.53%
CarMax Inc	KMX	127.4	+6.67%
Occidental Petroleum	OXY	32.91	+3.69%
Lincoln National Corp	LNC	65.58	+3.63%
Unum Group	UNM	29.33	+3.17%
DXC Technology Co	DXC	39.46	+3.16%
Edison International	EIX	57	+3.11%
Darden Restaurants Inc	DRI	144.11	+3.05%
DISH Network Corp	DISH	42.41	+2.96%
Mohawk Industries Inc	MHK	195.72	+2.89%

TOP 10 LOSERS

	Ticker	Last Price	Daily %
S&P 500 Stocks			
FedEx Corp	FDX	291.95	-3.87%
Caesars Entertainment	CZR	102.43	-2.20%
Waters Corp	WAT	337.78	-1.97%
Synopsys Inc	SNPS	268.97	-1.76%
Broadcom Inc	AVGO	462.2	-1.67%
AbbVie Inc	ABBV	112.98	-1.53%
Applied Materials Inc	AMAT	136.19	-1.50%
NortonLifeLock Inc	NLOK	26.98	-1.39%
Caterpillar Inc	CAT	216.31	-1.38%
Amazon.com Inc	AMZN	3401.46	-1.38%

S&P 500 DISTRIBUTION

S&P VOLATILITY INDEX


- Virgin Galactic Holdings zoomed 52% in a week after landing approval from FAA for full commercial launch license. The stock saw a 400% jump in mentions on the WallStreetBets Reddit Forum, according to data from Quiver Analytics.
- Torchlight Energy -5% post-market after announcing a one-for-two reverse stock split and confirming that its merger with Metamaterial will take effect on June 28.
- Daqo New Energy (+3.6%) rebounded from Thursday's loss as analysts expected the company will feel minimal impact from the U.S. ban on some solar materials made in China's Xinjiang region.
- GreenBox POS shares pulled back over 21% last week after announcing the pilot launch of its stablecoin token COYNI with \$5M deposited as initial seed capital.
- Marin Software shares surged nearly 120% last week after the digital marketing software company announced its Instacart Ads integration.
- JinkoSolar (+13.6%) powers higher after easily beating Q1 adjusted earnings expectations, and amid easing concerns over the Biden administration's narrowly focused ban on Chinese-made solar products from the Xinjiang region.
- Alpha Teknova (+28.9%) a provider of biopharmaceutical products sharply climbed above the IPO price on Friday in its first trading session following an upsized IPO priced at \$16.00 per share.
- CMC Metals (+8.6%) named 20-years industry veteran Mr. Mark Luchinski as its CFO, effective immediately, replacing Mr. Morgan Pickering, the former CFO.

KEY ECONOMIC INDICATORS

Country	Event	Surv (M)	Actual	Prior	Time
Austria	Bank Austria Manufacturing PMI	--	--	66.4	11:00
Canada	Bloomberg Nanos Confidence	--	--	65.2	15:00
Finland	Business Confidence	--	20	13	8:00
Finland	Consumer Confidence	--	4.6	2.7	8:00
Germany	Import Price Index MoM	1.30%	1.70%	1.40%	9:00
Germany	Import Price Index YoY	11.40%	11.80%	10.30%	9:00
Greece	Unemployment Rate	--	--	16.20%	12:00
Ireland	Retail Sales Volume MoM	--	--	7.40%	13:00
Ireland	Retail Sales Volume YoY	--	--	90.10%	13:00
Ireland	Bank of Ireland Economic Pulse	--	89.7	89.5	2:01
Japan	BOJ Outright Bond Purchase 5~10 Years				4:10
Japan	BOJ Outright Bond Purchase 25 Years~				4:10
Japan	BOJ Outright Bond Purchase 3~5 Years				4:10
Lithuania	Retail Sales WDA YoY	--	18.60%	35.70%	9:00
Lithuania	Consumer Confidence Indicator	--	3	-2	9:00
Slovakia	PPI YoY	--	--	0.90%	10:00
Slovakia	PPI MoM	--	--	0.40%	10:00
Spain	House Mortgage Approvals YoY	--	--	35.10%	10:00
Spain	Total Mortgage Lending YoY	--	--	25.40%	10:00
United States	Dallas Fed Manf. Activity	32.5	--	34.9	17:30

Source: Bloomberg

Banque BEMO sal

Head Office - Private and Corporate Banking

Elias Sarkis Ave., Bemo Bldg , Ashrafieh - Lebanon
Tel: +961 1 200 505 Fax: +961 1 217 860

Research & Development research@bemobank.com

Elias Sarkis Ave., Bemo Bldg , Ashrafieh - Lebanon
Tel: +961 1 200 505 Fax: +961 1 217 860

Disclaimer:

This report is published for information purposes only. The information herein has been compiled from, or based upon sources considered to be reliable (Bloomberg, SeekingAlpha, DailyStar...), but we do not guarantee or assume responsibility for its completeness and accuracy. This document should not be construed as a solicitation to take part in any investment, or as constituting any representation or warranty on our part. This report is not to be relied upon in substitution for the exercise of specialists.

We may not have taken any steps to ensure that the securities referred to in this report are suitable for any particular investor. The investments and services contained or referred to herein are not purported to be exhaustive, any person considering an investment should seek specialist advice on the suitability of an investment.

Nothing in this report constitutes investment, legal, accounting or tax advice, or a representation that any investment or strategy is suitable or appropriate to your individual circumstances, or otherwise constitutes a personal recommendation. Clients understand that it is their responsibility to seek legal and/or tax advice regarding the legal and tax consequences of their investment transactions. The consequences of any action taken on the basis of information contained herein are solely the responsibility of the recipient.

Investment instruments are subject to risk, including possible loss of principal amount invested. Past performance should not be taken as an indication or guarantee of future performance, and no representation or warranty, express or implied, is made regarding future performance. The value of securities and financial instruments is subject to exchange rate fluctuation that may have a positive or adverse effect on the price or income of such securities or financial instruments. Some investments mentioned in this report may have a high level of volatility. High volatility investments may experience sudden and large falls in their value causing losses when that investment is realized. Some investments may not be readily realizable and it may be difficult to sell or realize those investments, similarly it may prove difficult to obtain reliable information about the value, or risks, to which such an investment is exposed.

This report may provide the addresses of websites or references. We have not reviewed any such site and takes no responsibility for the content contained therein. Such address or reference is provided solely for convenience and information. Accessing such website through this report shall be at the recipients own risk.