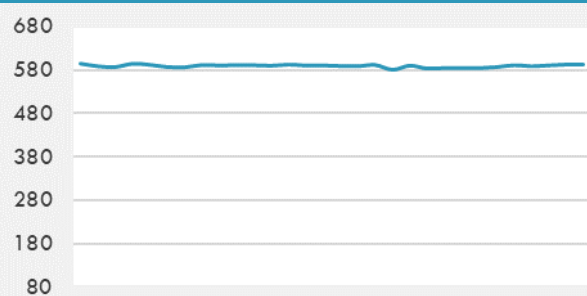
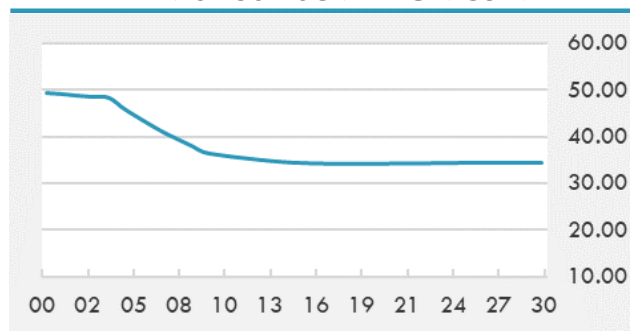


BEIRUT STOCK EXCHANGE

	Last	Daily %	YTD %	Dividend %
MSCI Lebanon	592.29	0.35%	35.31%	
Development and Reconstruction				
Solidere A	24.99	0.12%	35.08%	
Solidere B	24.87	1.06%	35.98%	
Banking				
Audi Listed	2.19	1.39%	79.51%	
BLC Listed	0.93	0.00%	0.00%	
BOB Listed	17.8	0.00%	0.00%	
Byblos Listed	0.92	-1.08%	73.58%	
BEMO Listed	1.2	0.00%	0.00%	
BLOM Listed	3.38	0.00%	63.29%	
Trading				
RYMCO	3.19	0.00%	0.00%	
Industrial				
Holcim	17	0.00%	17.24%	
Ciments Blancs	4.5	0.00%	9.76%	

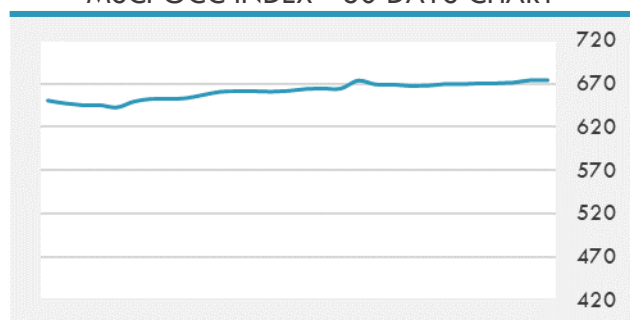
MSCI LEBANON INDEX - 30 DAYS CHART

LEBANESE USD SOVEREIGN CURVE


- The Association of Banks in Lebanon on Tuesday re-elected Salim Sfeir as its president for two more years.
- Saudi Arabia's Capital Market Authority gave the green light for listing the shares of Banan Real Estate Company on the Saudi Exchange's parallel market Nomu, according to a bourse disclosure.
- The Saudi Capital Market Authority approved the initial public offering of 15 million shares of Arabian Contracting Services Company.

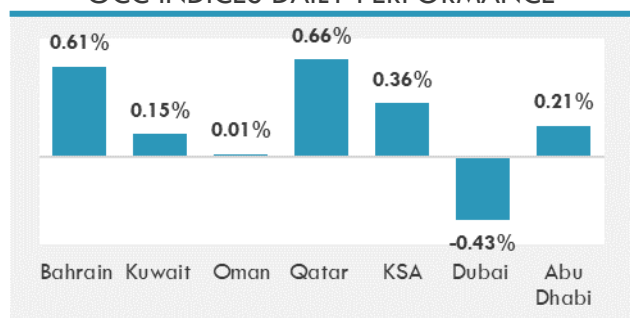
Source: Daily Star, Gulf Business, Mubasher, Bloomberg, Businessnews LB

GCC EQUITY INDICES

	Last Price	Daily %	YTD %
Bahrain	1596.05	0.61%	7.13%
Kuwait	6487.41	0.15%	16.97%
Oman	4058.08	0.01%	10.91%
Qatar	10749.11	0.66%	3.00%
KSA	10996.38	0.36%	26.55%
Dubai	2827.71	-0.43%	13.47%
Abu Dhabi	6763.08	0.21%	34.05%

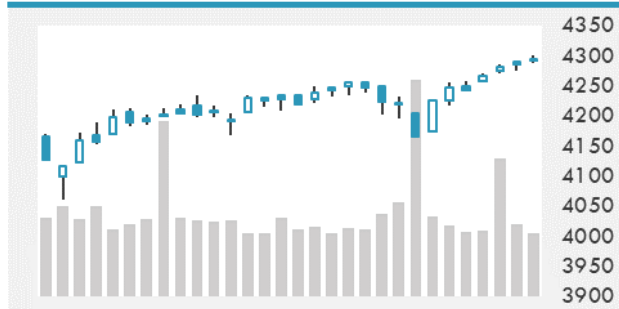
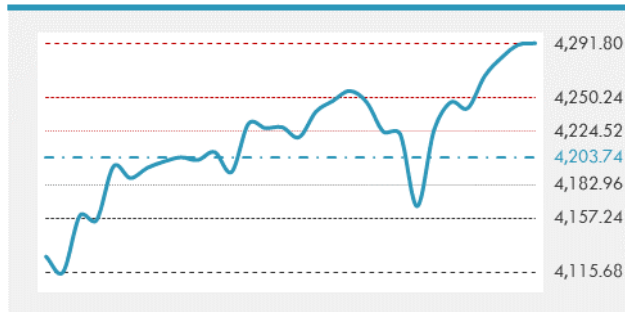
MSCI GCC INDEX - 30 DAYS CHART

LOCAL/GCC FOREIGN EXCHANGE

	Cross	Last Price
Lebanese Pound Spot	USD/LBP	1515.5
Bahraini Dinar Spot	USD/BHD	0.37701
Kuwaiti Dinar Spot	USD/KWD	0.30105
Omani Rial Spot	USD/OMR	0.385
Qatari Riyal Spot	USD/QAR	3.641
Saudi Riyal Spot	USD/SAR	3.7505
UAE Dirham Spot	USD/AED	3.673

GCC INDICES DAILY PERFORMANCE


UNITED STATES EQUITY MARKET INDICES

	Last Price	Daily %	YTD %	Δ10D Vol
Major Indices				
Dow Jones	34292.29	0.00%	12.04%	-0.68%
S&P 500	4291.8	0.00%	14.26%	-0.62%
Nasdaq	14528.33	0.00%	12.73%	-0.52%
Sectors Indices				
Discretionary	1431.18	0.00%	9.87%	-0.05%
Staples	716.47	0.00%	2.89%	-1.54%
Energy	402.1	0.00%	40.53%	0.00%
Financials	607.77	0.00%	23.93%	0.02%
Healthcare	1469.58	0.00%	10.99%	-0.41%
Industrials	859.06	0.00%	14.61%	-0.69%
IT	2596.96	0.00%	13.34%	-1.06%
Materials	515.77	0.00%	13.18%	-0.62%
Com. Services	264.95	0.00%	19.39%	-0.58%
Utilities	322.11	0.00%	0.95%	0.32%
Real Estate	279.53	0.00%	22.65%	-0.76%

S&P 500 INDEX - 30 DAYS CHART

S&P 500 SUPPORT & RESISTANCE


- The Standard & Poor's 500 rose for the fourth day, climbing 1.19 to 4,291.8 in New York.
- European equities rose Tuesday, with sectors seen benefiting from an economic rebound being favored, despite lingering concerns around the impact of the Delta variant of Covid-19.
- Most Asian stocks rose Wednesday after U.S. shares closed at a record on economic optimism and signs that vaccines can counter a highly infectious coronavirus strain.

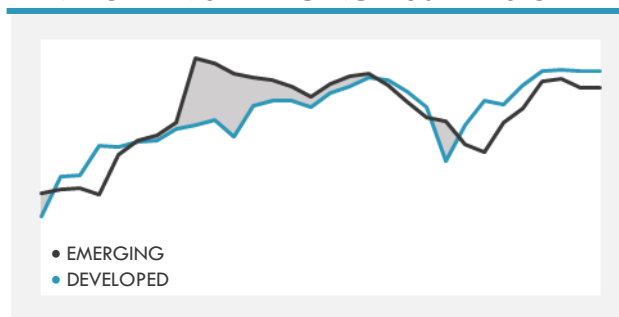
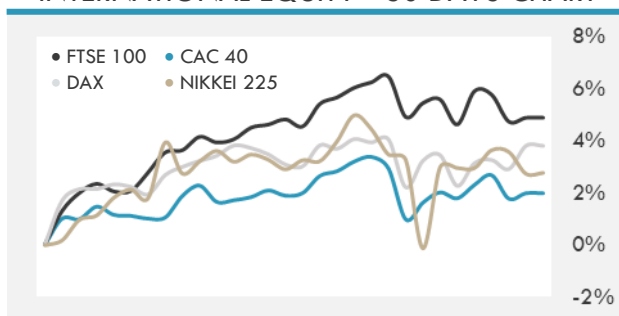
Source: Bloomberg, Financial Times, Reuters

INTERNATIONAL MARKETS INDICES

	Last Price	Daily %	YTD %	Δ10D Vol
World	1762.65	0.00%	11.66%	-0.21%
Developed	3024.44	0.00%	12.43%	-0.16%
Emerging	1377.15	0.00%	6.65%	-0.50%
Frontier	2594.27	0.00%	0.09%	-0.32%
Europe	151.26	0.00%	14.50%	0.10%
Latin America	2656.48	0.00%	8.35%	0.05%
Asia Pacific	208.51	0.00%	4.30%	0.11%

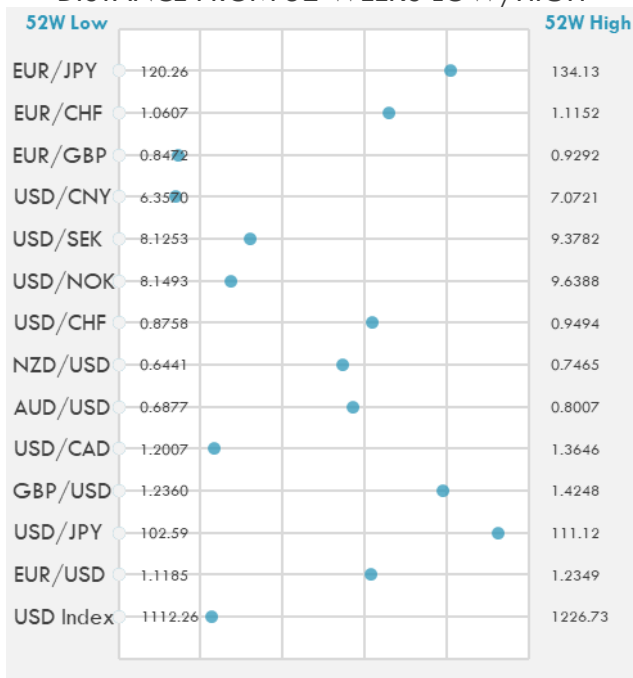
INTERNATIONAL EQUITY INDICES

	Last Price	Daily %	YTD %	Δ10D Vol
EuroStoxx 50	4107.51	0.00%	15.62%	0.22%
FTSE 100	7087.55	0.00%	9.71%	0.03%
CAC 40	6567.43	0.00%	18.30%	-0.04%
DAX	15690.59	0.00%	14.37%	0.97%
Swiss SMI	12028.45	0.00%	12.38%	-0.38%
Nikkei 225	28824.14	0.04%	5.03%	0.18%
CSI 300	5212.25	0.42%	0.02%	-2.07%

DEVELOPED VS EMERGING - 30 DAYS CHART

INTERNATIONAL EQUITY - 30 DAYS CHART


FOREIGN EXCHANGE MARKET

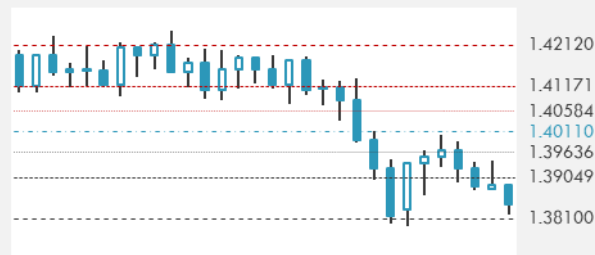
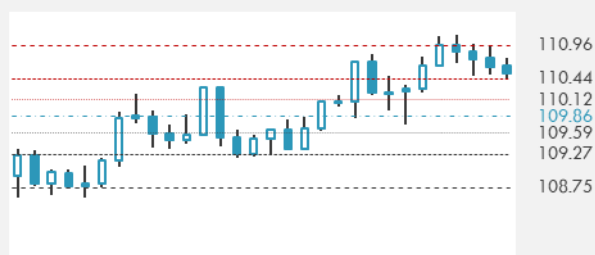
	Last Price	Daily %	Δ10D	Vol 25	ΔRR
Major USD Cross Rate					
USD Index	1138.26	-0.04%	-1.28%	-	
EUR/USD	1.1902	0.04%	-1.63%	-0.120	
USD/JPY	110.47	-0.05%	-1.02%	0.080	
GBP/USD	1.3854	0.13%	-0.21%	-0.313	
USD/CAD	1.2391	-0.08%	-0.61%	0.438	
AUD/USD	0.7523	0.15%	-0.71%	-0.680	
NZD/USD	0.7001	0.13%	-0.57%	-0.645	
USD/CHF	0.9213	0.03%	-2.42%	0.328	
USD/NOK	8.5592	-0.04%	-0.77%	0.983	
USD/SEK	8.5259	-0.04%	-2.07%	0.360	
USD/CNY	6.4570	-0.10%	-2.21%	0.400	
Major EUR Cross Rate					
EUR/GBP	0.85915	-0.08%	-0.26%	0.078	
EUR/CHF	1.09655	0.06%	-0.40%	0.278	
EUR/JPY	131.49	0.01%	-3.08%	-0.275	

DISTANCE FROM 52 WEEKS LOW/HIGH


- The greenback declined against most Group-of-10 currencies while sterling led gains.
- The yen strengthened versus Group-of-10 currency peers Tuesday as haven demand outweighed appetite for riskier assets, driven by concern over the spread of a more infectious Covid-19 variant. Commodity-linked currencies fell the most, with the New Zealand, Australian and Canadian dollars leading losses.

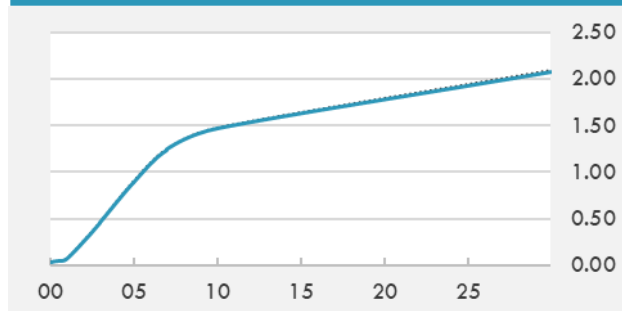
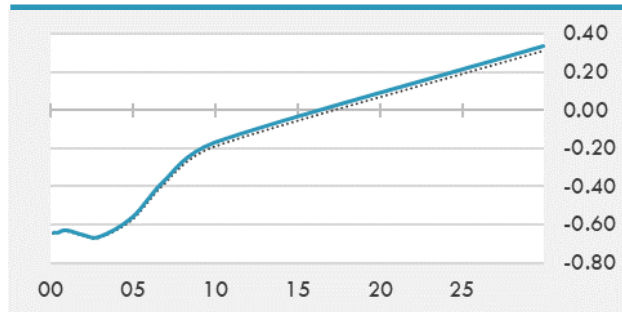
Source: Bloomberg, Financial Times, Reuters

EUR/USD 30 DAYS SUPPORT & RESISTANCE

GBP/USD 30 DAYS SUPPORT & RESISTANCE

USD/JPY 30 DAYS SUPPORT & RESISTANCE

USD/CAD 30 DAYS SUPPORT & RESISTANCE


GLOBAL BOND INDICES

	Yield	ΔYield (in Bps)
Benchmark Indices		
US 10 Years Benchmark	1.4697	-0.007
EU 10 Years Benchmark	-0.17	0.020
UK 10 Years Benchmark	0.738	0.016
Sovereign Bonds		
US Treasury Bond	0.594	0
Eurozone Sovereign Bond	-0.428	0
Japan Sovereign Bond	-0.104	0
Corporate Bonds		
US Corporate TR	2.054	-0.009
US High Yield Bond TR	3.775	-0.009
EUR Aggregate Corporate TR	0.349	0.005
EUR High Yield TR	2.966	-0.031
USD Emerging Market IG & HY	3.803	0.002

US TREASURIES YIELD CURVE

EUR GENERIC YIELD CURVE


- Treasuries ended Tuesday little changed after erasing early losses that were sparked by announcement of a jumbo bond offering by Salesforce.
- Bundesbank President Jens Weidmann urged the European Central Bank to gradually reduce its COVID-19-related bond purchases, citing "upside risks" for inflation and energy prices.
- German government bond yields rose on Tuesday after Europe's largest economy recorded inflation above the European Central Bank's target for the bloc for the second month running.

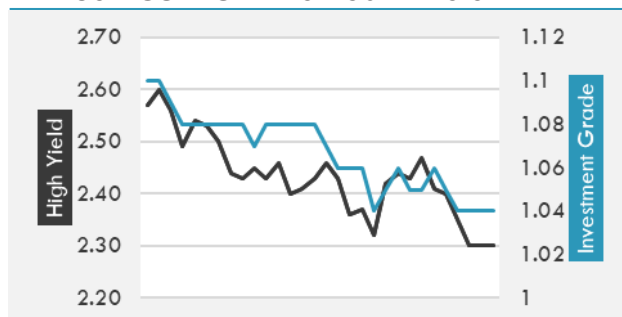
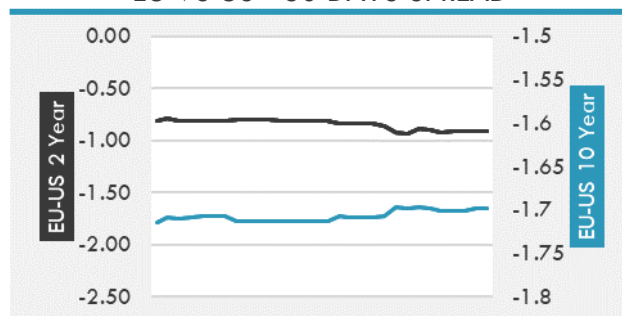
Source: Bloomberg, Financial Times, Economic times, Reuters

OVERNIGHT RATES - SWAPS

	Yield	ΔYield (in Bps)
3M USD LIBOR	0.147	0.000
3M EUR EURIBOR	-0.543	0.000
3M GBP LIBOR	0.080	0.000
3Y USD SWAP	0.568	-0.001
5Y USD SWAP	0.963	-0.003
10Y USD SWAP	1.447	0.000
30Y USD SWAP	1.777	-0.004

FIXED INCOME SPREADS

	Spread	ΔSpread (in Bps)
USD 3M vs 10Y Spread	1.419	-0.009
USD 2Y vs 10Y Spread	1.217	-0.003
USD IG Spread	1.040	0.000
USD HY Spread	2.300	0.000
EU vs US 10Y Spread	-1.648	0.020
EU vs US 2Y Spread	-0.902	0.004
EM vs Benchmark Spread	250.500	0.000

USD CORPORATES - 30 DAYS SPREAD

EU VS US - 30 DAYS SPREAD


GLOBAL COMMODITIES MARKET

	Last Price	Daily %
Commodity Index	93.44	0.26%

Energy

WTI Crude Future	73.47	0.67%
Brent Crude Future	75.07	0.41%
NYMEX Gasoline	224.02	0.05%
NYMEX Heat Oil	213	0.38%
ICE Gasoil	600.75	0.08%
NYMEX Natural Gas	3.707	2.12%

Precious Metals

Gold Spot \$/Oz	1759.94	-0.07%
Silver Spot \$/Oz	25.8317	0.23%
Platinum Spot \$/Oz	1070.54	-0.12%
Palladium Spot \$/Oz	2695.07	0.48%
Gold Future	1760.1	-0.20%
Silver Future	25.93	0.11%
Platinum Future	1066.9	-0.35%
Palladium Future	2694	0.48%

Base Metals

LME Aluminum	2552	0.00%
LME Copper	9335	0.00%
LME Zinc	2951	0.00%
LME Nickel	18358	0.00%
LME Lead	2305	0.00%
LME Tin	31354	0.00%

Agricultural

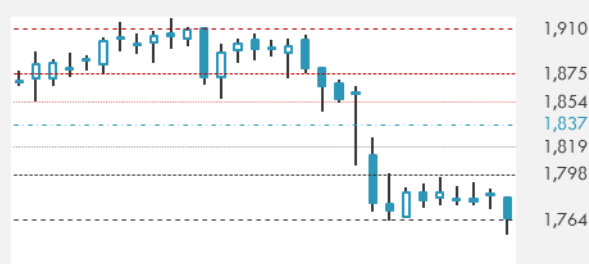
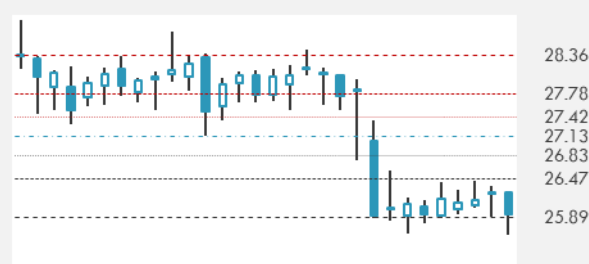
Corn CBT	543.75	-0.87%
Wheat CBT	643.75	-0.39%
Soybeans CBT	1317.75	0.40%
Bean Meal CBT	354.8	0.28%
Rough Rice CBT	13.58	0.07%
MDE Palm Oil	3663	3.10%
Soybean CBT	61.46	0.28%
Coffee ICE	160.2	0.00%
Sugar #11 ICE	17.54	0.00%
Cotton #2 ICE	87.32	-0.30%
Cocoa ICE	2390	0.00%
Ethanol CME	2.4	0.00%
Lumber CME	783.6	0.00%
Orange Juice ICE	120	0.00%
Live Cattle CME	121.925	0.00%
Feeder Cattle CME	157.4	0.00%
Lean Hogs CME	103.625	0.00%

COMMODITY INDEX SUPPORT & RESISTANCE

WTI OIL 30 DAYS SUPPORT & RESISTANCE


- OPEC and its allies delayed preliminary talks between ministers by a day to allow more time for a compromise before a critical meeting on Thursday.
- Gold headed for the biggest monthly drop in more than four years with investors weighing the outlook for monetary policy after the Federal Reserve's hawkish shift.

Source: Bloomberg, Reuters

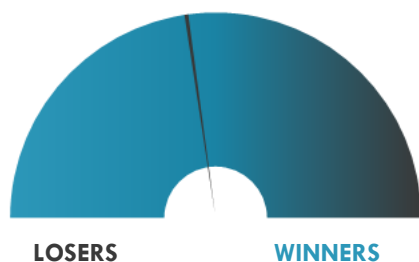
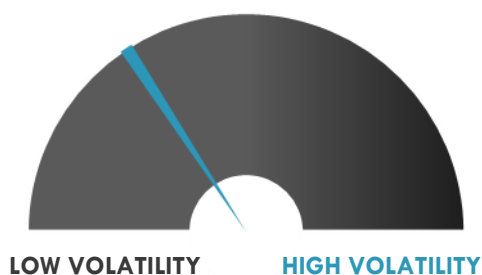
GOLD 30 DAYS SUPPORT & RESISTANCE

SILVER 30 DAYS SUPPORT & RESISTANCE


TOP 10 WINNERS

	Ticker	Last Price	Daily %
S&P 500 Stocks			
Skyworks Solutions Inc	SWKS	190.95	+4.52%
Qorvo Inc	QRVO	195.66	+4.45%
Morgan Stanley	MS	90.64	+3.35%
Xilinx Inc	XLNX	139.57	+3.11%
Advanced Micro Devices	AMD	89.52	+2.80%
eBay Inc	EBAY	70.49	+2.43%
NIKE Inc	NKE	155.95	+2.36%
Aptiv PLC	APTV	158.3	+2.33%
Laboratory Corp Amr.	LH	276	+2.20%
Etsy Inc	ETSY	202.53	+2.08%

TOP 10 LOSERS

	Ticker	Last Price	Daily %
S&P 500 Stocks			
Fox Corp	FOXA	36.83	-3.86%
Fox Corp	FOX	35.04	-3.20%
ViacomCBS Inc	VIAC	44.63	-2.98%
Northrop Grumman	NOC	360.31	-2.67%
NRG Energy Inc	NRG	39.75	-2.67%
Sempra Energy	SRE	133.72	-2.59%
Citigroup Inc	C	69.68	-2.56%
Boston Properties Inc	BXP	113.83	-2.48%
Ameren Corp	AEE	79.91	-2.45%
Alliant Energy Corp	LNT	55.74	-2.40%

S&P 500 DISTRIBUTION

S&P VOLATILITY INDEX


- Kiromic BioPharma (-16.9%) has priced an underwritten public offering of 8M shares at \$5 per share for gross proceeds of \$40M. Kiromic has also granted underwriters a 45-day option to purchase up to an additional 1.2M shares of common stock.
- Panbela Therapeutics (-6.1%) announced a \$5M bought deal offering of its common stock by H.C. Wainwright.
- MongoDB is 2.9% lower postmarket after filing to offer 2.3M shares in an equity offering.
- Vertex Energy +32.4% post-market after Clean Harbors agrees to acquire certain assets related to Vertex's used motor oil collection and re-refinery business for \$140M in cash.
- Shareholders of Falcon Capital Acquisition have voted in favour of the company's proposed business combination with digital health firm Sharecare. Shares are up 6.70% in post-market trading.
- China-based trucking services provider MingZhu Logistics traded 14.29% higher post-market after regaining compliance with Nasdaq.
- Brickell Biotech provided enrollment updates on the company's late-stage trials evaluating sofipronium bromide gel, 15% in patients with primary axillary (underarm) hyperhidrosis. Shares went up more than 7% post market.
- Cerevel Therapeutics traded 4.3% higher after hours on commencing an underwritten public offering of 14M shares; underwriters granted 30-day option to purchase up to an additional 2.1M shares.

KEY ECONOMIC INDICATORS

Country	Event	Surv (M)	Actual	Prior	Time
Canada	GDP MoM	-0.80%	--	1.10%	15:30
China	Manufacturing PMI	50.8	50.9	51	4:00
Eurozone	CPI MoM	0.20%	--	0.30%	12:00
Finland	Trade Balance	--	--	-2.65E+08	9:00
France	CPI YoY	1.50%	--	1.40%	9:45
Germany	Unemployment Change (000's)	-20000	--	-1 5000	10:55
Ireland	Unemployment Rate	--	--	7.80%	13:00
Italy	CPI EU Harmonized YoY	1.40%	--	1.20%	12:00
Italy	CPI EU Harmonized MoM	0.20%	--	0.00%	12:00
Japan	Industrial Production MoM	-2.10%	-5.90%	2.90%	2:50
Portugal	CPI EU Harmonized YoY	--	--	0.50%	11:30
Portugal	CPI EU Harmonized MoM	--	--	0.30%	11:30
Slovenia	CPI YoY	--	--	2.10%	11:30
Slovenia	CPI MoM	--	--	0.90%	11:30
United Kingdom	GDP QoQ	-1.50%	--	-1.50%	9:00
United Kingdom	GDP YoY	-6.10%	--	-6.10%	9:00
United States	MBA Mortgage Applications	--	--	2.10%	14:00
United States	ADP Employment Change	600000	--	978000	15:15
United States	MNI Chicago PMI	70	--	75.2	16:45
United States	Pending Home Sales MoM	-1.00%	--	-4.40%	17:00

Source: Bloomberg

Banque BEMO sal

Head Office - Private and Corporate Banking

Elias Sarkis Ave., Bemo Bldg , Ashrafieh - Lebanon
Tel: +961 1 200 505 Fax: +961 1 217 860

Research & Development research@bemobank.com

Elias Sarkis Ave., Bemo Bldg , Ashrafieh - Lebanon
Tel: +961 1 200 505 Fax: +961 1 217 860

Disclaimer:

This report is published for information purposes only. The information herein has been compiled from, or based upon sources considered to be reliable (Bloomberg, SeekingAlpha, DailyStar...), but we do not guarantee or assume responsibility for its completeness and accuracy. This document should not be construed as a solicitation to take part in any investment, or as constituting any representation or warranty on our part. This report is not to be relied upon in substitution for the exercise of specialists.

We may not have taken any steps to ensure that the securities referred to in this report are suitable for any particular investor. The investments and services contained or referred to herein are not purported to be exhaustive, any person considering an investment should seek specialist advice on the suitability of an investment.

Nothing in this report constitutes investment, legal, accounting or tax advice, or a representation that any investment or strategy is suitable or appropriate to your individual circumstances, or otherwise constitutes a personal recommendation. Clients understand that it is their responsibility to seek legal and/or tax advice regarding the legal and tax consequences of their investment transactions. The consequences of any action taken on the basis of information contained herein are solely the responsibility of the recipient.

Investment instruments are subject to risk, including possible loss of principal amount invested. Past performance should not be taken as an indication or guarantee of future performance, and no representation or warranty, express or implied, is made regarding future performance. The value of securities and financial instruments is subject to exchange rate fluctuation that may have a positive or adverse effect on the price or income of such securities or financial instruments. Some investments mentioned in this report may have a high level of volatility. High volatility investments may experience sudden and large falls in their value causing losses when that investment is realized. Some investments may not be readily realizable and it may be difficult to sell or realize those investments, similarly it may prove difficult to obtain reliable information about the value, or risks, to which such an investment is exposed.

This report may provide the addresses of websites or references. We have not reviewed any such site and takes no responsibility for the content contained therein. Such address or reference is provided solely for convenience and information. Accessing such website through this report shall be at the recipients own risk.