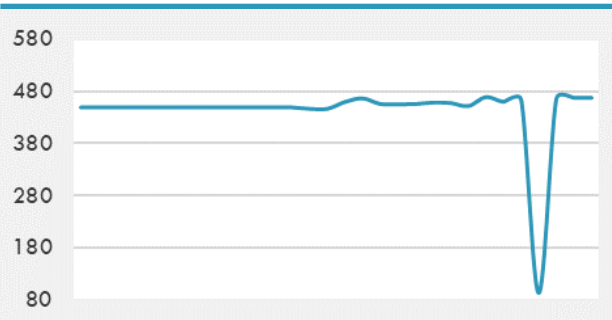
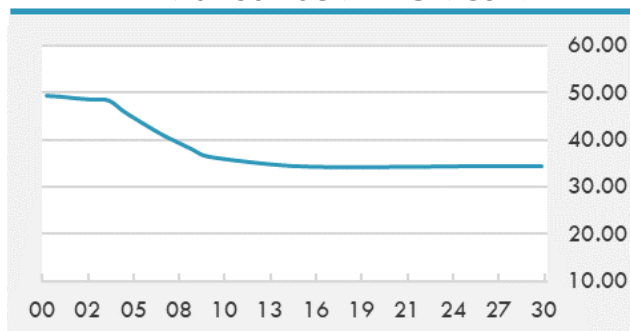


**BEIRUT STOCK EXCHANGE**

	Last	Daily %	YTD %	Dividend %
MSCI Lebanon	466.27	0.28%	6.52%	
<b>Development and Reconstruction</b>				
Solidere A	19.68	0.61%	6.38%	
Solidere B	19.56	-0.71%	6.94%	
<b>Banking</b>				
Audi Listed	1.52	0.00%	24.59%	
BLC Listed	0.93	0.00%	0.00%	
BOB Listed	17.8	0.00%	0.00%	
Byblos Listed	0.51	-3.77%	-3.77%	
BEMO Listed	1.2	0.00%	0.00%	
BLOM Listed	2.2	0.00%	6.28%	
<b>Trading</b>				
RYMCO	3.19	0.00%	0.00%	
<b>Industrial</b>				
Holcim	13	0.00%	-10.34%	
Ciments Blancs	4.1	0.00%	0.00%	

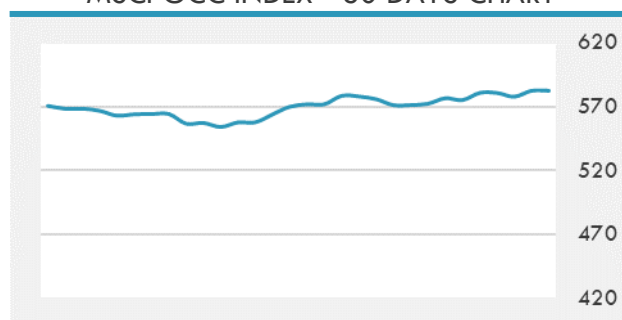
**MSCI LEBANON INDEX - 30 DAYS CHART**

**LEBANESE USD SOVEREIGN CURVE**


- The Central Bank is thoroughly studying and assessing the files of all Lebanese banks that were supposed to increase the capital by 20 percent and repatriate 3 percent of the liquidity from the correspondent banks.
- Banks operating in Saudi Arabia have raised their investments in government-issued bonds by 15.45% annually in January 2021, equivalent to SAR 59.76 billion.
- Saudia Cargo has signed an agreement with Cainiao, the logistic arm of Alibaba, to operate five weekly flights from Hong Kong to Belgium's Liège, with Riyadh as a connection point.

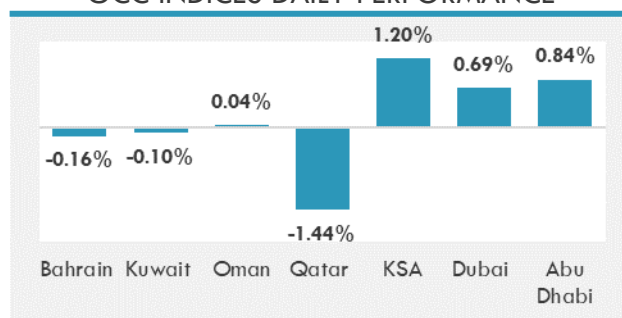
Source: Daily Star, Gulf Business, Mubasher, Bloomberg, Businessnews LB

**GCC EQUITY INDICES**

	Last Price	Daily %	YTD %
Bahrain	1470.26	-0.16%	-1.33%
Kuwait	5677.55	-0.10%	2.42%
Oman	3623.46	0.04%	-0.78%
Qatar	10063.09	-1.44%	-3.18%
KSA	9248.28	1.20%	6.43%
Dubai	2569.32	0.69%	3.81%
Abu Dhabi	5710.51	0.84%	13.05%

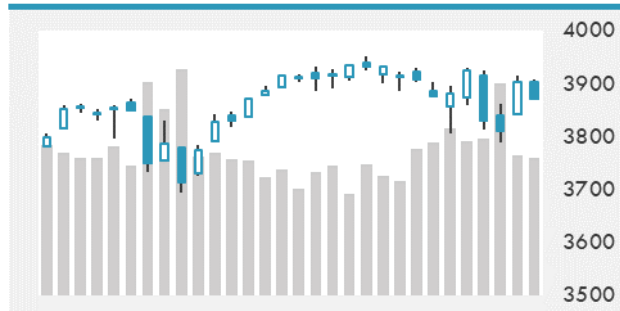
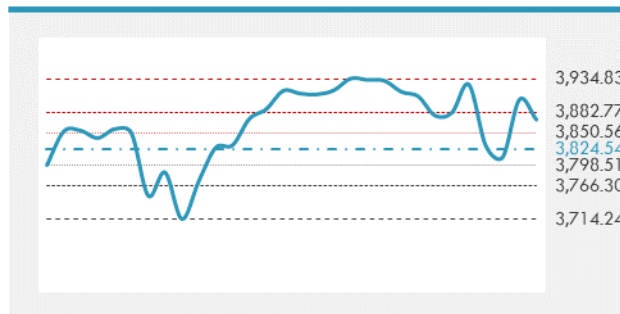
**MSCI GCC INDEX - 30 DAYS CHART**

**LOCAL/GCC FOREIGN EXCHANGE**

	Cross	Last Price
Lebanese Pound Spot	USD/LBP	1515.5
Bahraini Dinar Spot	USD/BHD	0.37715
Kuwaiti Dinar Spot	USD/KWD	0.30195
Omani Rial Spot	USD/OMR	0.38499
Qatari Riyal Spot	USD/QAR	3.6417
Saudi Riyal Spot	USD/SAR	3.7511
UAE Dirham Spot	USD/AED	3.673

**GCC INDICES DAILY PERFORMANCE**


**UNITED STATES EQUITY MARKET INDICES**

	Last Price	Daily %	YTD %	Δ10D Vol
<b>Major Indices</b>				
Dow Jones	31391.52	0.00%	2.56%	0.06%
S&P 500	3870.29	0.00%	3.04%	0.35%
Nasdaq	13358.79	0.00%	3.65%	0.83%
<b>Sectors Indices</b>				
Discretionary	1305.77	0.00%	0.25%	-0.27%
Staples	654.56	0.00%	-6.00%	-0.62%
Energy	367.31	0.00%	28.37%	0.50%
Financials	550.72	0.00%	12.29%	0.27%
Healthcare	1324.03	0.00%	0.00%	-0.45%
Industrials	781.68	0.00%	4.29%	-0.04%
IT	2327.66	0.00%	1.59%	0.63%
Materials	475.55	0.00%	4.35%	0.02%
Com. Services	235.89	0.00%	6.30%	-0.01%
Utilities	300.91	0.00%	-5.69%	-0.21%
Real Estate	230.96	0.00%	1.34%	0.17%

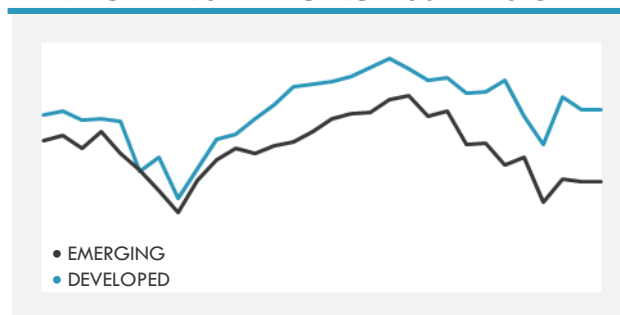
**S&P 500 INDEX - 30 DAYS CHART**

**S&P 500 SUPPORT & RESISTANCE**


- U.S. equities futures fall, tracking a decline in most Asian gauges after China's top banking regulator said he's "very worried" about risks emerging from bubbles in global financial markets.
- European stocks extended Monday's rebound as investors shifted their focus to rapid vaccination efforts and optimism over economic recovery.
- Asia stocks rose, with the Hang Seng Index leading gains among national equity benchmarks in the region, as shares of Macau casino operators jumped.

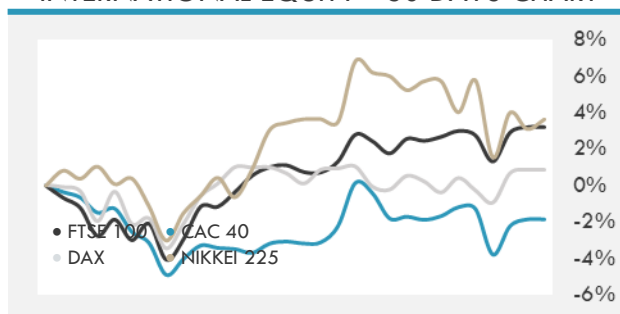
Source: Bloomberg, Financial Times, Reuters

**INTERNATIONAL MARKETS INDICES**

	Last Price	Daily %	YTD %	Δ10D Vol
World	1629.39	0.00%	3.22%	0.06%
Developed	2768.25	0.00%	2.91%	0.07%
Emerging	1359.65	0.00%	5.30%	-0.33%
Frontier	2544.78	0.00%	-1.82%	0.19%
Europe	136.93	0.00%	3.66%	-0.20%
Latin America	2233.26	0.00%	-8.91%	-0.03%
Asia Pacific	209.49	0.00%	4.79%	-0.18%

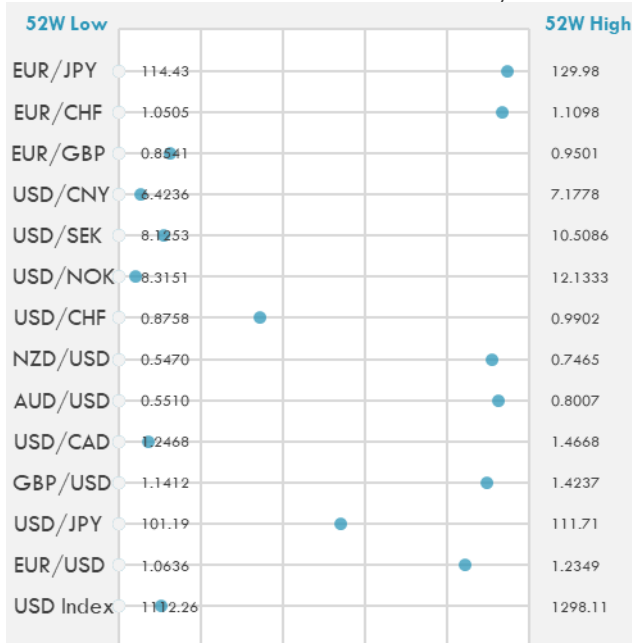
**DEVELOPED VS EMERGING - 30 DAYS CHART**

**INTERNATIONAL EQUITY INDICES**

	Last Price	Daily %	YTD %	Δ10D Vol
EuroStoxx 50	3707.72	0.00%	4.37%	-0.50%
FTSE 100	6613.75	0.00%	2.37%	0.20%
CAC 40	5809.73	0.00%	4.65%	-0.12%
DAX	14039.8	0.00%	2.34%	-1.50%
Swiss SMI	10817.15	0.00%	1.06%	0.60%
Nikkei 225	29559.1	0.51%	7.71%	-1.07%
CSI 300	5430.36	1.51%	4.20%	-4.50%

**INTERNATIONAL EQUITY - 30 DAYS CHART**


**FOREIGN EXCHANGE MARKET**

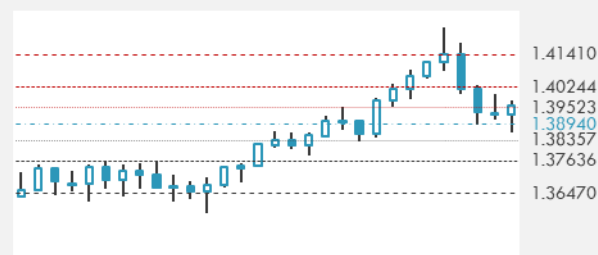
	Last Price	Daily %	Δ10D	Vol 25	ΔRR
<b>Major USD Cross Rate</b>					
USD Index	1131.32	0.04%	-0.21%	-	
EUR/USD	1.2083	-0.07%	-0.48%	-0.033	
USD/JPY	106.87	0.17%	-0.24%	-0.093	
GBP/USD	1.3951	-0.03%	-1.39%	-0.625	
USD/CAD	1.2629	-0.05%	-0.03%	0.525	
AUD/USD	0.7821	0.01%	-0.02%	-1.143	
NZD/USD	0.7286	-0.05%	-0.05%	-1.148	
USD/CHF	0.9152	0.04%	-0.66%	0.375	
USD/NOK	8.4696	-0.06%	-0.18%	1.388	
USD/SEK	8.3853	0.06%	-0.13%	0.560	
USD/CNY	6.4652	-0.08%	-0.25%	0.510	
<b>Major EUR Cross Rate</b>					
EUR/GBP	0.8661	-0.02%	-0.34%	0.473	
EUR/CHF	1.1059	0.00%	0.12%	0.575	
EUR/JPY	129.14	0.10%	-0.08%	-0.310	

**DISTANCE FROM 52 WEEKS LOW/HIGH**


- The yen fell against all of its Group-of-10 peers as comments from Federal Reserve Governor Lael Brainard eased concern that a surge in Treasury yields could derail the economic recovery.
- A rally in Australia's dollar faltered. The currency rose initially on stronger-than-expected fourth-quarter economic growth but demand failed to completely clear option-related selling.
- Most emerging Asian currencies rose after Federal Reserve Governor Lael Brainard said the economic conditions for a withdrawal in asset purchases were still some way off, easing the market's concern about the recent spike in bond yields.

Source: Bloomberg, Financial Times, Reuters

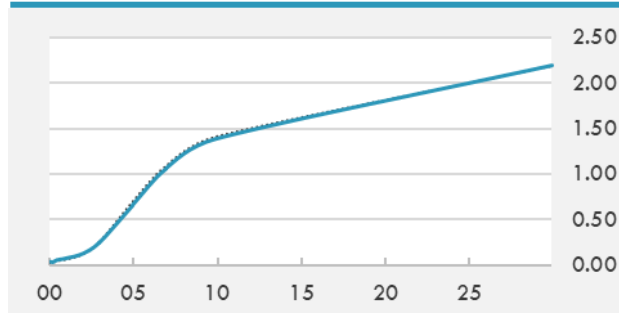
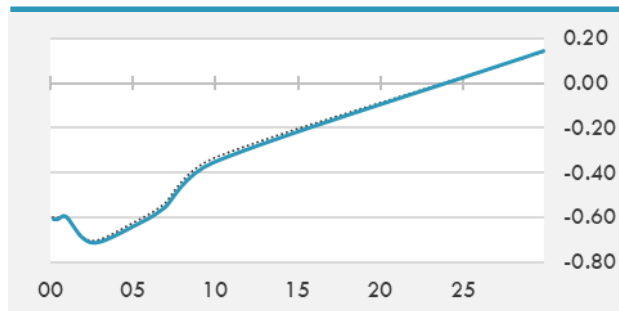
**EUR/USD 30 DAYS SUPPORT & RESISTANCE**

**GBP/USD 30 DAYS SUPPORT & RESISTANCE**

**USD/JPY 30 DAYS SUPPORT & RESISTANCE**

**USD/CAD 30 DAYS SUPPORT & RESISTANCE**


**GLOBAL BOND INDICES**

	Yield	ΔYield (in Bps)
<b>Benchmark Indices</b>		
US 10 Years Benchmark	1.3914	-0.026
EU 10 Years Benchmark	-0.352	-0.018
UK 10 Years Benchmark	0.687	-0.072
<b>Sovereign Bonds</b>		
US Treasury Bond	0.594	0
Eurozone Sovereign Bond	-0.428	0
Japan Sovereign Bond	-0.104	0
<b>Corporate Bonds</b>		
US Corporate TR	2.068	-0.011
US High Yield Bond TR	4.134	0.003
EUR Aggregate Corporate TR	0.327	-0.009
EUR High Yield TR	3.250	-0.091
USD Emerging Market IG & HY	3.740	0.001

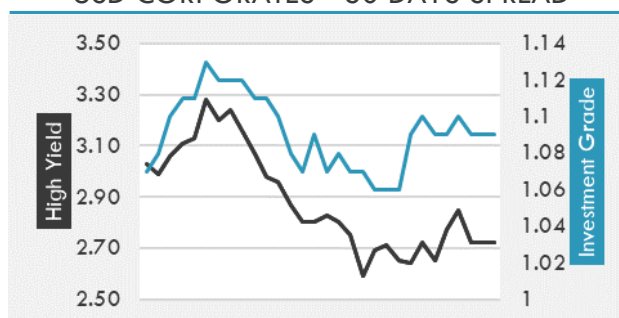
**US TREASURIES YIELD CURVE**

**EUR GENERIC YIELD CURVE**


- Guggenheim CIO Scott MinerD isn't buying the recent Treasury-market consensus that efforts to spur the U.S. recovery mean an inevitable march higher in yields. He said the five-year Treasury yield could fall to an all-time low of 0.10%, and suggested the 10-year equivalent could drop below zero as a surge in cash holdings from federal stimulus programs finds its way into government bonds and other fixed-income securities.
- A sharp rise in European government-bond yields last week is prompting investors to bet on the region's central bank intervening to keep financing costs low.

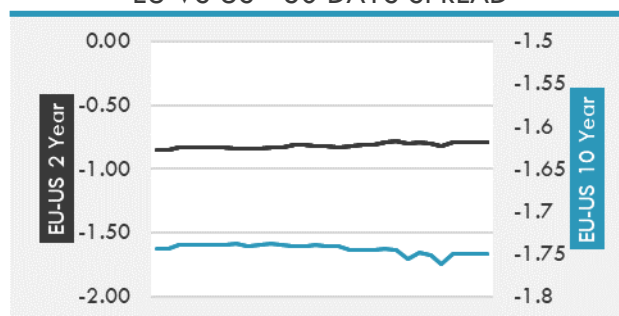
Source: Bloomberg, Financial Times, Economic times, Reuters

**OVERNIGHT RATES - SWAPS**

	Yield	ΔYield (in Bps)
3M USD LIBOR	0.184	0.000
3M EUR EURIBOR	-0.533	0.000
3M GBP LIBOR	0.070	0.000
3Y USD SWAP	0.370	-0.013
5Y USD SWAP	0.776	-0.035
10Y USD SWAP	1.460	-0.037
30Y USD SWAP	1.932	-0.015

**USD CORPORATES - 30 DAYS SPREAD**

**FIXED INCOME SPREADS**

	Spread	ΔSpread (in Bps)
USD 3M vs 10Y Spread	1.348	-0.033
USD 2Y vs 10Y Spread	1.266	-0.028
USD IG Spread	1.090	0.000
USD HY Spread	2.720	0.000
EU vs US 10Y Spread	-1.665	0.000
EU vs US 2Y Spread	-0.790	0.000
EM vs Benchmark Spread	260.300	0.700

**EU VS US - 30 DAYS SPREAD**


**GLOBAL COMMODITIES MARKET**

	Last Price	Daily %
Commodity Index	85.32	0.07%

**Energy**

WTI Crude Future	60.09	0.57%
Brent Crude Future	63.15	0.72%
NYMEX Gasoline	194.03	0.20%
NYMEX Heat Oil	182.06	0.69%
ICE Gasoil	515.75	-0.39%
NYMEX Natural Gas	2.857	0.63%

**Precious Metals**

Gold Spot \$/Oz	1732.99	-0.31%
Silver Spot \$/Oz	26.636	-0.48%
Platinum Spot \$/Oz	1204.78	-0.23%
Palladium Spot \$/Oz	2371.11	-0.18%
Gold Future	1731	-0.15%
Silver Future	26.73	-0.55%
Platinum Future	1207.1	-0.60%
Palladium Future	2357.5	-0.47%

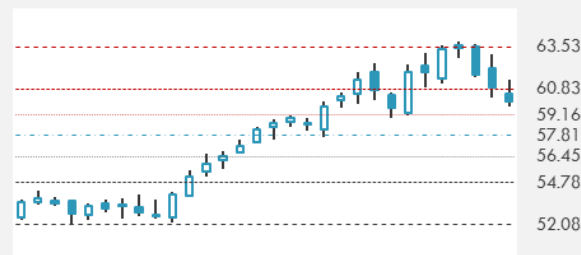
**Base Metals**

LME Aluminum	2212	0.00%
LME Copper	9171	0.00%
LME Zinc	2851	0.00%
LME Nickel	18672	0.00%
LME Lead	2080	0.00%
LME Tin	24300	0.00%

**Agricultural**

Corn CBT	541.75	-0.60%
Wheat CBT	664.25	-0.30%
Soybeans CBT	1415	0.18%
Bean Meal CBT	423.3	0.38%
Rough Rice CBT	13.265	-0.64%
MDE Palm Oil	3654	0.33%
Soybean CBT	49.84	0.36%
Coffee ICE	133.85	0.00%
Sugar #11 ICE	16.43	0.00%
Cotton #2 ICE	90.6	-0.43%
Cocoa ICE	2645	0.00%
Ethanol CME	1.814	0.00%
Lumber CME	836.1	0.00%
Orange Juice ICE	112.65	0.00%
Live Cattle CME	119.425	0.00%
Feeder Cattle CME	140.475	0.00%
Lean Hogs CME	85.35	0.00%

**COMMODITY INDEX SUPPORT & RESISTANCE**

**WTI OIL 30 DAYS SUPPORT & RESISTANCE**


- OPEC+ is poised to agree a production increase this week as it seeks to cool a rapid rally in crude prices.
- Gold steadied as investors weighed comments by a Federal Reserve official on the recent gyrations in Treasury markets and the impact on monetary policy going forward.

Source: Bloomberg, Reuters

**GOLD 30 DAYS SUPPORT & RESISTANCE**

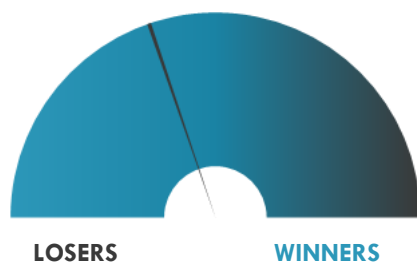
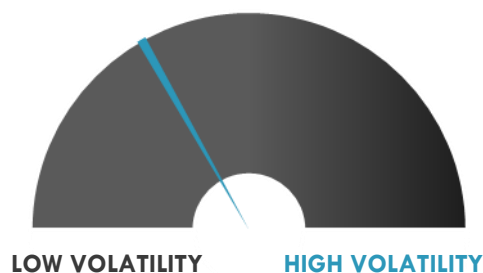
**SILVER 30 DAYS SUPPORT & RESISTANCE**


**TOP 10 WINNERS**

	Ticker	Last Price	Daily %
<b>S&amp;P 500 Stocks</b>			
Fox Corp	FOXA	37.95	+9.08%
Fox Corp	FOX	36.05	+7.97%
Nielsen Holdings PLC	NLSN	24.89	+7.56%
Carnival Corp	CCL	27.59	+4.87%
Ford Motor Co	F	12.55	+4.76%
Norwegian Cruise Line	NCLH	31.18	+4.46%
Newmont Corp	NEM	56.8	+3.93%
Las Vegas Sands Corp	LVS	64.95	+3.01%
General Motors Co	GM	54.11	+2.99%
Lumen Technologies Inc	LUMN	12.85	+2.72%

**TOP 10 LOSERS**

	Ticker	Last Price	Daily %
<b>S&amp;P 500 Stocks</b>			
Enphase Energy Inc	ENPH	171.69	-7.92%
Target Corp	TGT	173.49	-6.77%
Teradyne Inc	TER	126.8	-5.37%
Twitter Inc	TWTR	73.67	-5.10%
KLA Corp	KLAC	309.82	-4.96%
Monolithic Power	MPWR	370.58	-4.75%
Tesla Inc	TSLA	686.44	-4.45%
Lam Research Corp	LRCX	573.36	-4.25%
NOV Inc	NOV	15	-4.09%
First Republic Bank/CA	FRC	165.5	-4.07%

**S&P 500 DISTRIBUTION**

**S&P VOLATILITY INDEX**


- The RealReal proposes private offering of \$250M in principal amount of its convertible senior notes due 2028. Underwriters' overallotment option is additional \$37.5M of notes.
- Veeva Systems is trading up 1.8% after hours following strong Q4 results and guidance that implies the strength will continue through the next fiscal year.
- Magnolia Oil & Gas -5.4% post-market after launching a secondary public offering of 17M class A common shares by selling stockholders, with an underwriters option to purchase up to an aggregate additional 2.55M shares.
- Ambarella shares climb 6% after hours following Q4 beats and an upside sales forecast for the current quarter. Revenue was up 9% on the year to \$62.14M and EPS was \$0.14, six cents ahead of estimates.
- Horizon Technology Finance stock slips 1.4% in after-hours trading after Q4 net investment income of 21 cents per share misses the average analyst estimate of 28 cents and decreased from 43 cents in the year-ago quarter.
- Nurix Therapeutics trades 1.9% down after hours on commencing an underwritten public offering of 4M shares; underwriters granted 30-day option to purchase up to an additional 600K shares.
- Digi International trades 2.1% down after hours on announcing intention to offer and sell shares of its common stock in an underwritten registered public offering; underwriters granted 30-day option to purchase an additional 15% of the shares.



**KEY ECONOMIC INDICATORS**

Country	Event	Surv (M)	Actual	Prior	Time
Australia	GDP SA QoQ	2.50%	3.10%	3.30%	2:30
Australia	GDP YoY	-1.90%	-1.10%	-3.80%	2:30
Canada	Building Permits MoM	2.50%	--	-4.10%	15:30
China	Caixin China PMI Services	51.5	51.5	52	3:45
China	Caixin China PMI Composite	--	51.7	52.2	3:45
Eurozone	Markit Eurozone Composite PMI	48.1	--	48.1	11:00
France	Markit France Services PMI	43.6	--	43.6	10:50
France	Markit France Composite PMI	45.2	--	45.2	10:50
Germany	Markit Germany Services PMI	45.9	--	45.9	10:55
Ireland	Unemployment Rate	--	--	5.80%	13:00
Ireland	AIB Ireland PMI Services	--	41.2	36.2	3:01
Ireland	AIB Ireland PMI Composite	--	42.7	40.3	3:01
Italy	GDP WDA QoQ	-2.00%	--	-2.00%	11:00
Italy	GDP WDA YoY	-6.60%	--	-6.60%	11:00
Japan	Jibun Bank Japan PMI Services	--	46.3	45.8	2:30
Japan	Jibun Bank Japan PMI Composite	--	48.2	47.6	2:30
United Kingdom	Markit/CIPS UK Services PMI	49.7	--	49.7	11:30
United States	MBA Mortgage Applications	--	--	-11.40%	14:00
United States	ADP Employment Change	200000	--	174000	15:15
United States	ISM Services Index	58.7	--	58.7	17:00

Source: Bloomberg

## Banque BEMO sal

### Head Office - Private and Corporate Banking

Elias Sarkis Ave., Bemo Bldg , Ashrafieh - Lebanon  
Tel: +961 1 200 505 Fax: +961 1 217 860

### Research & Development [research@bemobank.com](mailto:research@bemobank.com)

Elias Sarkis Ave., Bemo Bldg , Ashrafieh - Lebanon  
Tel: +961 1 200 505 Fax: +961 1 217 860

#### Disclaimer:

This report is published for information purposes only. The information herein has been compiled from, or based upon sources considered to be reliable (Bloomberg, SeekingAlpha, DailyStar...), but we do not guarantee or assume responsibility for its completeness and accuracy. This document should not be construed as a solicitation to take part in any investment, or as constituting any representation or warranty on our part. This report is not to be relied upon in substitution for the exercise of specialists.

We may not have taken any steps to ensure that the securities referred to in this report are suitable for any particular investor. The investments and services contained or referred to herein are not purported to be exhaustive, any person considering an investment should seek specialist advice on the suitability of an investment.

Nothing in this report constitutes investment, legal, accounting or tax advice, or a representation that any investment or strategy is suitable or appropriate to your individual circumstances, or otherwise constitutes a personal recommendation. Clients understand that it is their responsibility to seek legal and/or tax advice regarding the legal and tax consequences of their investment transactions. The consequences of any action taken on the basis of information contained herein are solely the responsibility of the recipient.

Investment instruments are subject to risk, including possible loss of principal amount invested. Past performance should not be taken as an indication or guarantee of future performance, and no representation or warranty, express or implied, is made regarding future performance. The value of securities and financial instruments is subject to exchange rate fluctuation that may have a positive or adverse effect on the price or income of such securities or financial instruments. Some investments mentioned in this report may have a high level of volatility. High volatility investments may experience sudden and large falls in their value causing losses when that investment is realized. Some investments may not be readily realizable and it may be difficult to sell or realize those investments, similarly it may prove difficult to obtain reliable information about the value, or risks, to which such an investment is exposed.

This report may provide the addresses of websites or references. We have not reviewed any such site and takes no responsibility for the content contained therein. Such address or reference is provided solely for convenience and information. Accessing such website through this report shall be at the recipients own risk.