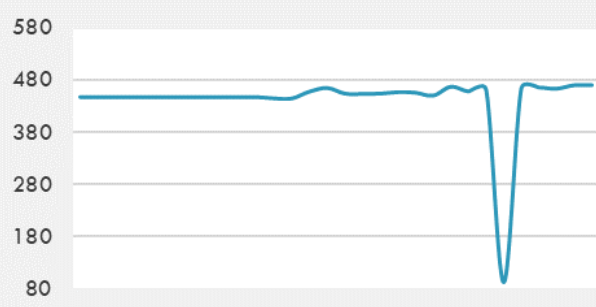
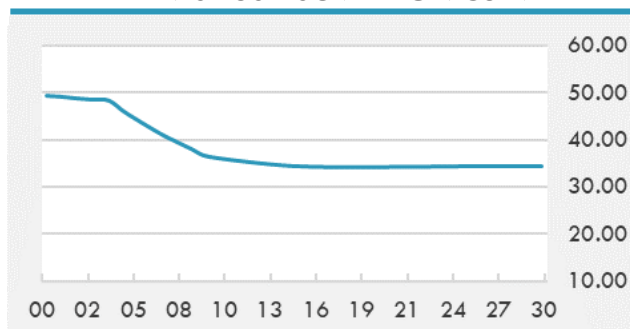


BEIRUT STOCK EXCHANGE

	Last	Daily %	YTD %	Dividend %
MSCI Lebanon	470.73	1.46%	7.54%	
Development and Reconstruction				
Solidere A	19.93	1.63%	7.73%	
Solidere B	19.56	0.93%	6.94%	
Banking				
Audi Listed	1.65	0.00%	35.25%	
BLC Listed	0.93	0.00%	0.00%	
BOB Listed	17.8	0.00%	0.00%	
Byblos Listed	0.51	0.00%	-3.77%	
BEMO Listed	1.2	0.00%	0.00%	
BLOM Listed	2.2	0.00%	6.28%	
Trading				
RYMCO	3.19	0.00%	0.00%	
Industrial				
Holcim	14	7.69%	-3.45%	
Ciments Blancs	4.1	0.00%	0.00%	

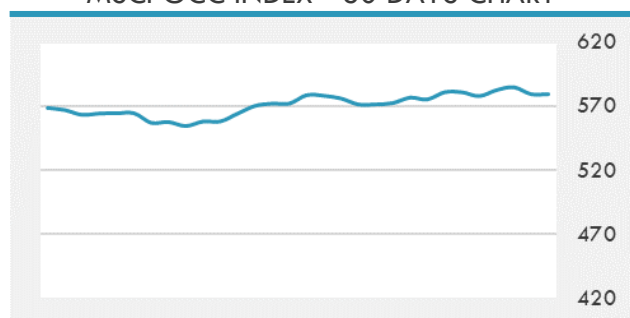
MSCI LEBANON INDEX - 30 DAYS CHART

LEBANESE USD SOVEREIGN CURVE


- Abu Dhabi National Oil Company on Wednesday signed an agreement with South Korea's GS Energy to explore opportunities to grow Abu Dhabi's hydrogen economy and enhance the emirate's fuel export position, Emirates News Agency (WAM) reported.
- King Salman Energy Park and AMCO signed an agreement for the establishment of a facility for producing wellheads, pumps, coating, pipe drilling, and oilfield maintenance services.
- The board of directors of Abu Dhabi Islamic Bank recommended a cash dividend of 20.58 fils per share, representing 46.6% of net profits for 2020.

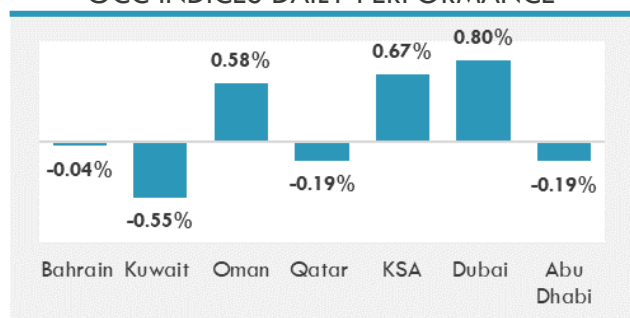
Source: Daily Star, Gulf Business, Mubasher, Bloomberg, Businessnews LB

GCC EQUITY INDICES

	Last Price	Daily %	YTD %
Bahrain	1473.47	-0.04%	-1.09%
Kuwait	5653.32	-0.55%	1.93%
Oman	3644.54	0.58%	-0.16%
Qatar	10044.45	-0.19%	-4.14%
KSA	9310.28	0.67%	6.36%
Dubai	2589.99	0.80%	3.10%
Abu Dhabi	5699.52	-0.19%	12.83%

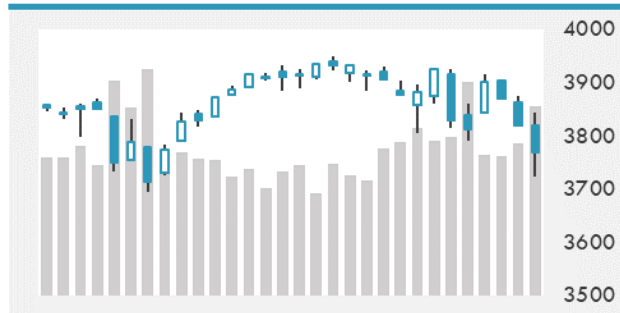
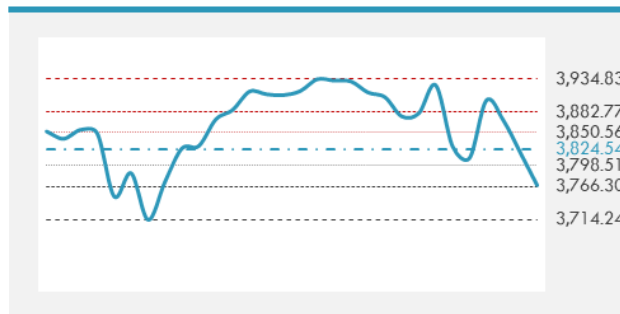
MSCI GCC INDEX - 30 DAYS CHART

LOCAL/GCC FOREIGN EXCHANGE

	Cross	Last Price
Lebanese Pound Spot	USD/LBP	1515.5
Bahraini Dinar Spot	USD/BHD	0.37716
Kuwaiti Dinar Spot	USD/KWD	0.30195
Omani Rial Spot	USD/OMR	0.38499
Qatari Riyal Spot	USD/QAR	3.6417
Saudi Riyal Spot	USD/SAR	3.7513
UAE Dirham Spot	USD/AED	3.673

GCC INDICES DAILY PERFORMANCE


UNITED STATES EQUITY MARKET INDICES

	Last Price	Daily %	YTD %	Δ10D Vol
Major Indices				
Dow Jones	30924.14	0.00%	1.04%	0.77%
S&P 500	3768.47	0.00%	0.33%	0.72%
Nasdaq	12723.47	0.00%	-1.28%	0.40%
Sectors Indices				
Discretionary	1248.92	0.00%	-4.12%	0.73%
Staples	647.5	0.00%	-7.01%	-0.91%
Energy	381.76	0.00%	33.42%	0.72%
Financials	548.17	0.00%	11.77%	1.08%
Healthcare	1289.06	0.00%	-2.64%	0.40%
Industrials	769.69	0.00%	2.69%	0.94%
IT	2218.58	0.00%	-3.17%	1.02%
Materials	460.88	0.00%	1.13%	0.49%
Com. Services	232.22	0.00%	4.64%	-0.47%
Utilities	296.87	0.00%	-6.96%	-0.52%
Real Estate	226.5	0.00%	-0.61%	-0.39%

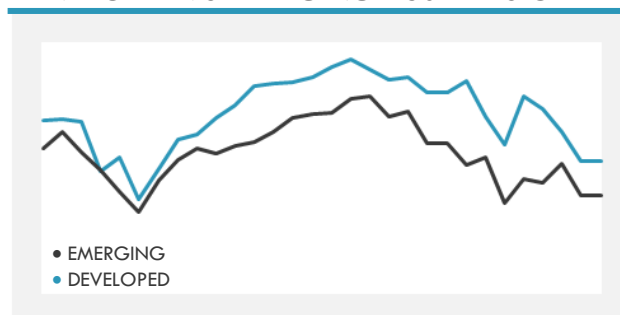
S&P 500 INDEX - 30 DAYS CHART

S&P 500 SUPPORT & RESISTANCE


- Asian stocks pared losses Friday and U.S. futures stabilized as investors digested comments from Federal Reserve Chairman Jerome Powell that fell short of trying to rein in bond yields. Stock markets dipped in South Korea but edged up in Japan and China.
- European shares dropped as concerns resurfaced about lofty valuations among pandemic winners following a surge in sovereign bond yields.
- The S&P/ASX 200 index fell 0.7% close at 6,710.80 after Federal Reserve Chair Jerome Powell refrained from pushing back against the recent spike in bond yields.

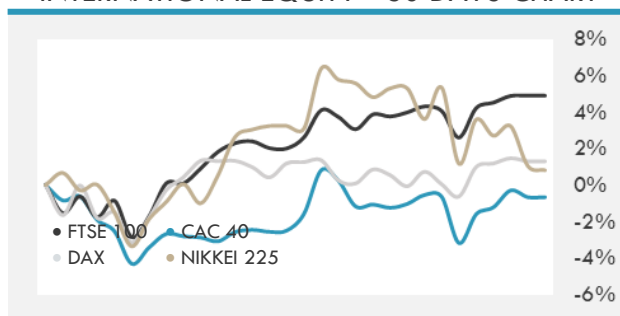
Source: Bloomberg, Financial Times, Reuters

INTERNATIONAL MARKETS INDICES

	Last Price	Daily %	YTD %	Δ10D Vol
World	1595.83	0.00%	1.10%	0.86%
Developed	2706.48	0.00%	0.61%	0.67%
Emerging	1346.34	0.00%	4.27%	1.48%
Frontier	2510.71	0.00%	-3.13%	0.12%
Europe	136.61	0.00%	3.41%	-0.21%
Latin America	2268.87	0.00%	-7.46%	2.37%
Asia Pacific	207.18	0.00%	3.63%	1.71%

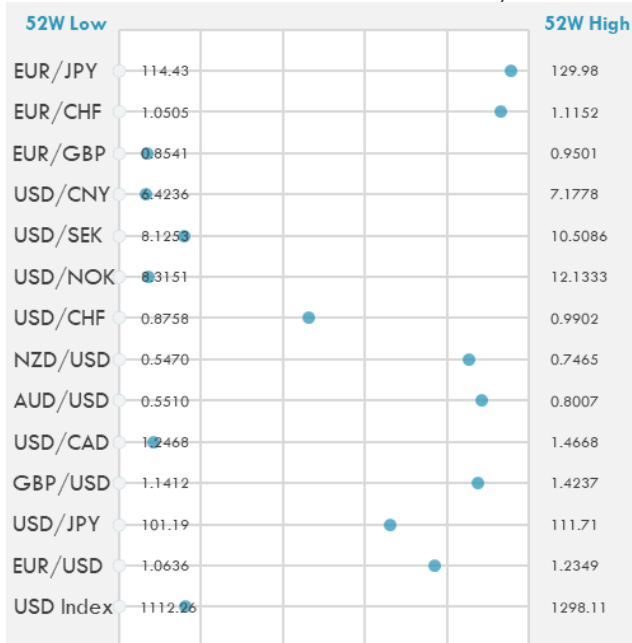
DEVELOPED VS EMERGING - 30 DAYS CHART

INTERNATIONAL EQUITY INDICES

	Last Price	Daily %	YTD %	Δ10D Vol
EuroStoxx 50	3704.85	0.00%	4.28%	-0.72%
FTSE 100	6650.88	0.00%	2.95%	0.17%
CAC 40	5830.65	0.00%	5.03%	-0.49%
DAX	14056.34	0.00%	2.46%	-0.47%
Swiss SMI	10750.09	0.00%	0.44%	0.03%
Nikkei 225	28864.32	-0.23%	5.17%	1.61%
CSI 300	5294.96	0.27%	1.61%	2.45%

INTERNATIONAL EQUITY - 30 DAYS CHART


FOREIGN EXCHANGE MARKET

	Last Price	Daily %	Δ10D	Vol 25	ΔRR
Major USD Cross Rate					
USD Index	1142.27	0.02%	-0.14%	-	
EUR/USD	1.1957	-0.10%	-0.54%	-0.268	
USD/JPY	108.14	0.15%	-1.24%	0.108	
GBP/USD	1.3888	-0.05%	-0.47%	-0.518	
USD/CAD	1.2655	-0.09%	0.03%	0.635	
AUD/USD	0.7721	-0.06%	-0.67%	-1.590	
NZD/USD	0.7174	-0.22%	-0.41%	-1.663	
USD/CHF	0.9290	0.03%	-0.10%	0.543	
USD/NOK	8.5890	0.11%	-0.01%	1.663	
USD/SEK	8.5023	0.12%	-0.23%	0.545	
USD/CNY	6.4743	0.07%	-0.03%	0.200	
Major EUR Cross Rate					
EUR/GBP	0.86095	-0.04%	0.00%	0.365	
EUR/CHF	1.11088	-0.09%	0.28%	0.640	
EUR/JPY	129.3	0.05%	-0.06%	-0.475	

DISTANCE FROM 52 WEEKS LOW/HIGH


- A gauge of the dollar's strength climbed to a three-month high after Federal Reserve Chair Jerome Powell refrained from pushing back against the recent rise in U.S. yields.
- Australian dollar hits lowest level in almost a month after Federal Reserve Chair Jerome Powell failed to placate bond bears, sending Treasury yields and the greenback higher.
- Yen weakened past 108 per dollar for the first time in eight months amid a continued rise in U.S. yields.

Source: Bloomberg, Financial Times, Reuters

EUR/USD 30 DAYS SUPPORT & RESISTANCE

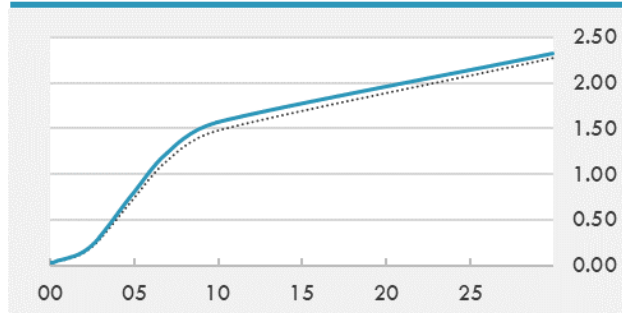
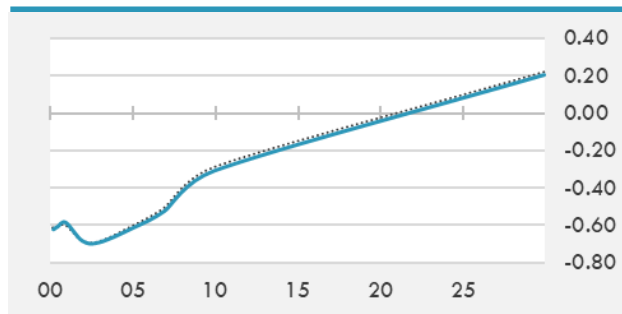
GBP/USD 30 DAYS SUPPORT & RESISTANCE

USD/JPY 30 DAYS SUPPORT & RESISTANCE

USD/CAD 30 DAYS SUPPORT & RESISTANCE


GLOBAL BOND INDICES

	Yield	ΔYield (in Bps)
Benchmark Indices		
US 10 Years Benchmark	1.564	0.083
EU 10 Years Benchmark	-0.311	-0.023
UK 10 Years Benchmark	0.731	-0.048
Sovereign Bonds		
US Treasury Bond	0.594	0
Eurozone Sovereign Bond	-0.428	0
Japan Sovereign Bond	-0.104	0
Corporate Bonds		
US Corporate TR	2.178	0.059
US High Yield Bond TR	4.299	0.107
EUR Aggregate Corporate TR	0.341	-0.007
EUR High Yield TR	3.220	-0.016
USD Emerging Market IG & HY	3.813	0.034

US TREASURIES YIELD CURVE

EUR GENERIC YIELD CURVE


- The surge in the 10-year Treasury yield (the global bond benchmark) to a one-year high is sending shockwaves through markets. Fed-fueled yield spike is sucking froth out of risk assets. Bond selloff impacting tech shares, EM stocks, and corporate bonds.
- Gilts extend their bull flattening move, paring some of Wednesday's declines and outperforming bunds by 3bps.

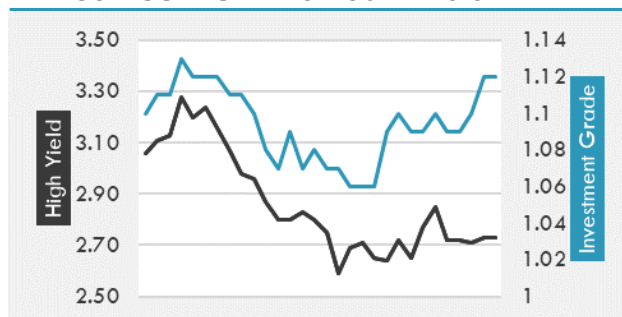
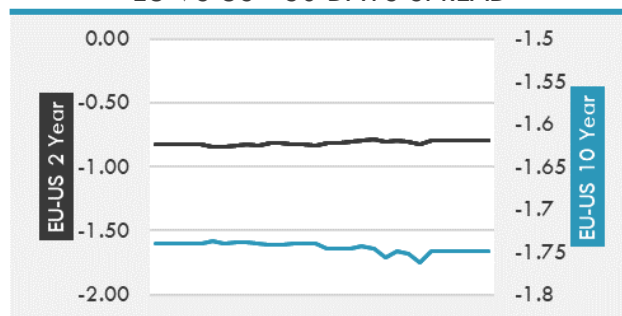
OVERNIGHT RATES - SWAPS

	Yield	ΔYield (in Bps)
3M USD LIBOR	0.194	0.000
3M EUR EURIBOR	-0.546	0.000
3M GBP LIBOR	0.074	0.000
3Y USD SWAP	0.427	0.022
5Y USD SWAP	0.900	0.058
10Y USD SWAP	1.635	0.085
30Y USD SWAP	2.069	0.051

FIXED INCOME SPREADS

	Spread	ΔSpread (in Bps)
USD 3M vs 10Y Spread	1.529	0.088
USD 2Y vs 10Y Spread	1.417	0.081
USD IG Spread	1.120	0.020
USD HY Spread	2.730	0.020
EU vs US 10Y Spread	-1.665	0.000
EU vs US 2Y Spread	-0.790	0.000
EM vs Benchmark Spread	260.800	0.400

Source: Bloomberg, Financial Times, Economic times, Reuters

USD CORPORATES - 30 DAYS SPREAD

EU VS US - 30 DAYS SPREAD


GLOBAL COMMODITIES MARKET

	Last Price	Daily %
Commodity Index	85.17	0.46%

Energy

WTI Crude Future	64.6	1.21%
Brent Crude Future	67.57	1.24%
NYMEX Gasoline	201.51	0.86%
NYMEX Heat Oil	191.05	0.76%
ICE Gasoil	540	0.89%
NYMEX Natural Gas	2.724	-0.80%

Precious Metals

Gold Spot \$/Oz	1697.5	0.00%
Silver Spot \$/Oz	25.2502	-0.41%
Platinum Spot \$/Oz	1127.85	-0.15%
Palladium Spot \$/Oz	2350.81	0.38%
Gold Future	1694.5	-0.36%
Silver Future	25.29	-0.67%
Platinum Future	1127.5	-0.69%
Palladium Future	2338	-0.20%

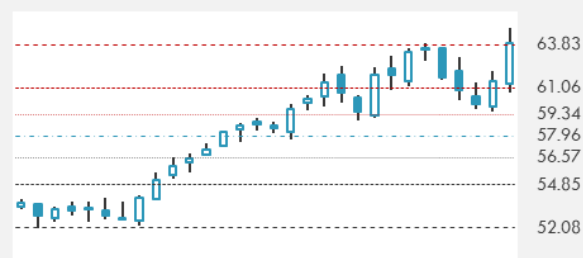
Base Metals

LME Aluminum	2154	0.00%
LME Copper	8908	0.00%
LME Zinc	2749	0.00%
LME Nickel	16133	0.00%
LME Lead	2015	0.00%
LME Tin	23575	0.00%

Agricultural

Corn CBT	535.75	0.61%
Wheat CBT	655	0.61%
Soybeans CBT	1419.5	0.64%
Bean Meal CBT	418	0.34%
Rough Rice CBT	13.4	0.34%
MDE Palm Oil	3770	1.05%
Soybean CBT	50.97	0.51%
Coffee ICE	132.15	0.00%
Sugar #11 ICE	16.26	0.00%
Cotton #2 ICE	87.05	-0.10%
Cocoa ICE	2625	0.00%
Ethanol CME	1.76	0.00%
Lumber CME	866	0.00%
Orange Juice ICE	111.1	0.00%
Live Cattle CME	118.55	0.00%
Feeder Cattle CME	138.975	0.00%
Lean Hogs CME	87.3	0.00%

COMMODITY INDEX SUPPORT & RESISTANCE

WTI OIL 30 DAYS SUPPORT & RESISTANCE


- Oil headed toward \$65 a barrel after OPEC+ chose not to relax supply curbs even as the global economy pulls out of its pandemic-driven slump.
- Gold extended losses below \$1,700 an ounce after Federal Reserve Chair Jerome Powell refrained from pushing back against the recent surge in bond yields.

Source: Bloomberg, Reuters

GOLD 30 DAYS SUPPORT & RESISTANCE

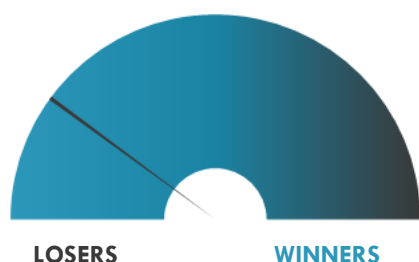
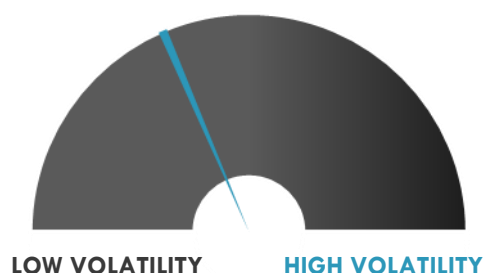
SILVER 30 DAYS SUPPORT & RESISTANCE


TOP 10 WINNERS

	Ticker	Last Price	Daily %
S&P 500 Stocks			
Diamondback Energy Inc	FANG	81.26	+9.16%
EOG Resources Inc	EOG	71.43	+6.63%
Marathon Oil Corp	MRO	12.36	+6.28%
APA Corp	APA	20.98	+5.37%
Hess Corp	HES	70.79	+4.66%
Occidental Petroleum	OXY	29.9	+4.33%
Devon Energy Corp	DVN	23.62	+4.10%
Exxon Mobil Corp	XOM	58.71	+3.87%
ConocoPhillips	COP	55.62	+3.65%
Kinder Morgan Inc	KMI	15.69	+3.43%

TOP 10 LOSERS

	Ticker	Last Price	Daily %
S&P 500 Stocks			
Tyler Technologies Inc	TYL	379.56	-13.58%
Western Digital Corp	WDC	63.49	-8.87%
Monolithic Power Sys.	MPWR	327.97	-7.56%
Enphase Energy Inc	ENPH	149.88	-6.98%
Freeport-McMoRan Inc	FCX	32.7	-6.57%
Mosaic Co/The	MOS	29.57	-6.31%
PayPal Holdings Inc	PYPL	239.07	-6.27%
Applied Materials Inc	AMAT	108.24	-6.24%
Teradyne Inc	TER	113.97	-6.19%
Aptiv PLC	APTV	146.4	-5.88%

S&P 500 DISTRIBUTION

S&P VOLATILITY INDEX


- April natural gas closed -2.5% at \$2.746/MMBtu and have fallen 15% from the February highs caused by the Arctic blast that froze much of the U.S.
- IDT is 7% higher after hours following its fiscal Q2 earnings report, where net income jumped as the company managed expenses while revenues ticked up.
- Veritone is up 4% after hours following its fourth-quarter earnings, where it produced record revenue and trimmed losses with broad business gains.
- Editas Medicine has surged ~2.5% in the post-market after its CEO James Mullen disclosed the purchase of 25K of company shares at \$46.27 apiece to increase his stake to 35K shares.
- T2 Biosystems shares rise nearly 15% in after market trading as the company posted fourth-quarter results that were largely in-line with Wall Street estimates, and provided financial forecast for the year.
- Jamf shares push 2.6% higher after reporting Q4 beats and providing a set of revenue forecasts that topped expectations. Q4 revenue was up 34% on the year to \$76.4M. Recurring revenue increased 40% to \$70M.
- Medallia issued mixed revenue forecasts with the Q1 view missing estimates with \$126-128M versus the \$128.6M consensus and an upside FY22 with \$563-567M vs. \$554.85M.
- Waitr Holdings announced the company has agreed to pursue a partnership with Flow Payments to create a compliant marketplace, delivery and payment solution for dispensaries selling cannabis.

KEY ECONOMIC INDICATORS

Country	Event	Surv (M)	Actual	Prior	Time
Australia	Foreign Reserves	--	5.64E+10	5.48E+10	7:30
Austria	Wholesale Price Index MoM	--	--	2.10%	10:00
Austria	GDP SA QoQ	--	--	-4.30%	10:00
Canada	Int'l Merchandise Trade	-1.40E+09	--	-1.67E+09	15:30
Estonia	CPI YoY	--	0.60%	0.20%	8:00
Estonia	CPI MoM	--	0.90%	0.70%	8:00
France	Current Account Balance	--	--	-1.20E+09	9:45
France	Trade Balance	-3.40E+09	--	-3.39E+09	9:45
Germany	Factory Orders MoM	0.50%	--	-1.90%	9:00
Germany	Factory Orders WDA YoY	1.90%	--	6.40%	9:00
Ireland	GDP QoQ	--	--	11.10%	13:00
Ireland	GDP YoY	--	--	8.10%	13:00
Ireland	Live Register Level	--	--	190500	13:00
Italy	Retail Sales MoM	-0.50%	--	2.50%	11:00
Italy	Retail Sales YoY	--	--	-3.10%	11:00
Slovakia	GDP YoY	--	--	-2.70%	10:00
United States	Change in Nonfarm Payrolls	198000	--	49000	15:30
United States	Unemployment Rate	6.30%	--	6.30%	15:30
United States	Trade Balance	-6.75E+10	--	-6.66E+10	15:30
United States	Change in Manufact. Payrolls	15000	--	-10000	15:30

Source: Bloomberg

Banque BEMO sal

Head Office - Private and Corporate Banking

Elias Sarkis Ave., Bemo Bldg , Ashrafieh - Lebanon
Tel: +961 1 200 505 Fax: +961 1 217 860

Research & Development research@bemobank.com

Elias Sarkis Ave., Bemo Bldg , Ashrafieh - Lebanon
Tel: +961 1 200 505 Fax: +961 1 217 860

Disclaimer:

This report is published for information purposes only. The information herein has been compiled from, or based upon sources considered to be reliable (Bloomberg, SeekingAlpha, DailyStar...), but we do not guarantee or assume responsibility for its completeness and accuracy. This document should not be construed as a solicitation to take part in any investment, or as constituting any representation or warranty on our part. This report is not to be relied upon in substitution for the exercise of specialists.

We may not have taken any steps to ensure that the securities referred to in this report are suitable for any particular investor. The investments and services contained or referred to herein are not purported to be exhaustive, any person considering an investment should seek specialist advice on the suitability of an investment.

Nothing in this report constitutes investment, legal, accounting or tax advice, or a representation that any investment or strategy is suitable or appropriate to your individual circumstances, or otherwise constitutes a personal recommendation. Clients understand that it is their responsibility to seek legal and/or tax advice regarding the legal and tax consequences of their investment transactions. The consequences of any action taken on the basis of information contained herein are solely the responsibility of the recipient.

Investment instruments are subject to risk, including possible loss of principal amount invested. Past performance should not be taken as an indication or guarantee of future performance, and no representation or warranty, express or implied, is made regarding future performance. The value of securities and financial instruments is subject to exchange rate fluctuation that may have a positive or adverse effect on the price or income of such securities or financial instruments. Some investments mentioned in this report may have a high level of volatility. High volatility investments may experience sudden and large falls in their value causing losses when that investment is realized. Some investments may not be readily realizable and it may be difficult to sell or realize those investments, similarly it may prove difficult to obtain reliable information about the value, or risks, to which such an investment is exposed.

This report may provide the addresses of websites or references. We have not reviewed any such site and takes no responsibility for the content contained therein. Such address or reference is provided solely for convenience and information. Accessing such website through this report shall be at the recipients own risk.