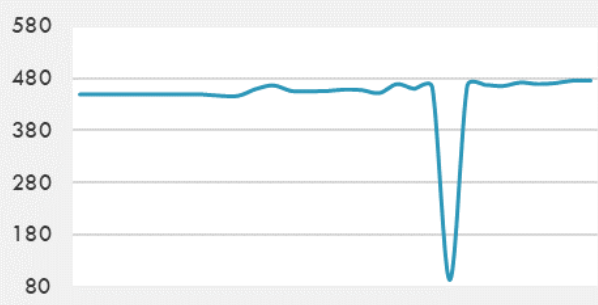
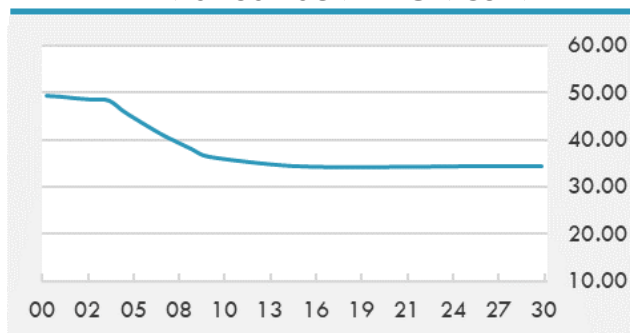


BEIRUT STOCK EXCHANGE

	Last	Daily %	YTD %	Dividend %
MSCI Lebanon	474.58	1.03%	8.42%	
Development and Reconstruction				
Solidere A	20	0.65%	8.11%	
Solidere B	20	2.20%	9.35%	
Banking				
Audi Listed	1.69	1.81%	38.52%	
BLC Listed	0.93	0.00%	0.00%	
BOB Listed	17.8	0.00%	0.00%	
Byblos Listed	0.55	0.00%	3.77%	
BEMO Listed	1.2	0.00%	0.00%	
BLOM Listed	2.22	0.00%	7.25%	
Trading				
RYMCO	3.19	0.00%	0.00%	
Industrial				
Holcim	14.9	0.00%	2.76%	
Ciments Blancs	4.1	0.00%	0.00%	

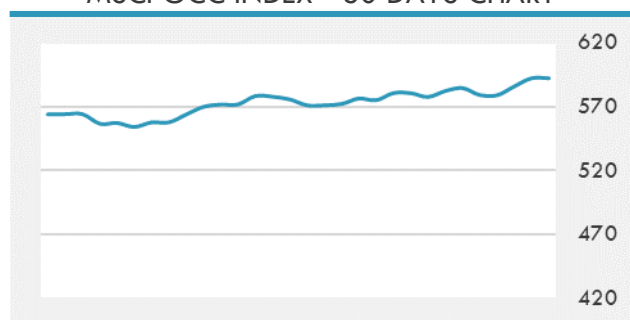
MSCI LEBANON INDEX - 30 DAYS CHART

LEBANESE USD SOVEREIGN CURVE


- The Tadawul All Share Index increased by 1.05% or 98.83 points at the end of Tuesday's trading session, settling at 9,473.20 points.
- The board of National Petrochemical Company has recommended distributing cash dividends, equivalent to 7.5% of the nominal value, for 2020.
- The net profits of Northern Region Cement Company increased by 16.68% to SAR 108.225 million in 2020 from SAR 92.753 million in 2019.

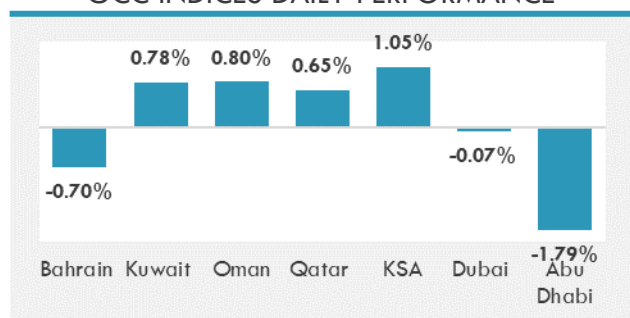
Source: Daily Star, Gulf Business, Mubasher, Bloomberg, Businessnews LB

GCC EQUITY INDICES

	Last Price	Daily %	YTD %
Bahrain	1466.52	-0.70%	-1.56%
Kuwait	5733.61	0.78%	3.60%
Oman	3697.06	0.80%	1.05%
Qatar	10117.84	0.65%	-3.05%
KSA	9473.2	1.05%	9.02%
Dubai	2538.6	-0.07%	1.48%
Abu Dhabi	5583.12	-1.79%	10.73%

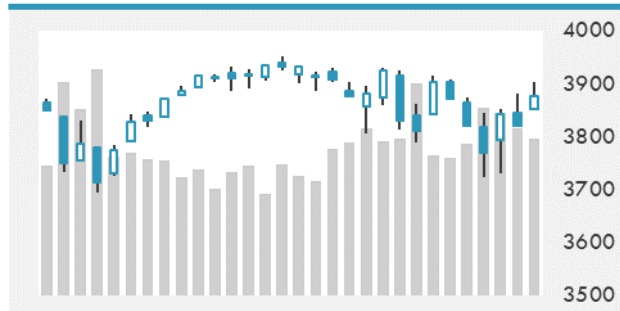
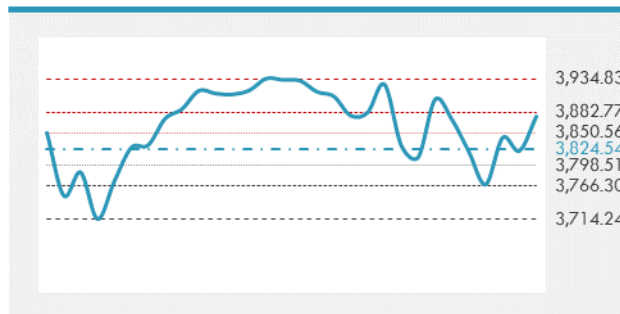
MSCI GCC INDEX - 30 DAYS CHART

LOCAL/GCC FOREIGN EXCHANGE

	Cross	Last Price
Lebanese Pound Spot	USD/LBP	1515.5
Bahraini Dinar Spot	USD/BHD	0.3771
Kuwaiti Dinar Spot	USD/KWD	0.3022
Omani Rial Spot	USD/OMR	0.385
Qatari Riyal Spot	USD/QAR	3.6416
Saudi Riyal Spot	USD/SAR	3.7515
UAE Dirham Spot	USD/AED	3.673

GCC INDICES DAILY PERFORMANCE


UNITED STATES EQUITY MARKET INDICES

	Last Price	Daily %	YTD %	Δ10D Vol
Major Indices				
Dow Jones	31832.74	0.00%	4.01%	-1.24%
S&P 500	3875.44	0.00%	3.18%	0.48%
Nasdaq	13073.82	0.00%	1.44%	6.21%
Sectors Indices				
Discretionary	1303.32	0.00%	0.06%	7.66%
Staples	663.54	0.00%	-4.71%	0.01%
Energy	389.54	0.00%	36.14%	-0.64%
Financials	561	0.00%	14.39%	-1.02%
Healthcare	1319.47	0.00%	-0.34%	-0.06%
Industrials	793.3	0.00%	5.84%	-1.57%
IT	2281.79	0.00%	-0.41%	4.30%
Materials	480.94	0.00%	5.54%	-0.20%
Com. Services	236.41	0.00%	6.53%	0.44%
Utilities	309.66	0.00%	-2.95%	-0.07%
Real Estate	232.77	0.00%	2.14%	1.13%

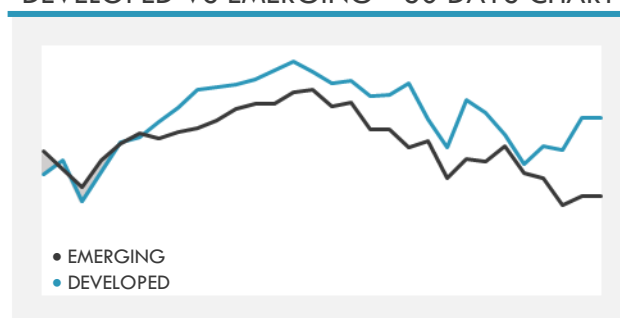
S&P 500 INDEX - 30 DAYS CHART

S&P 500 SUPPORT & RESISTANCE


- Future contracts on major U.S. equity indexes drop, led by declines in technology shares, amid bond market volatility ahead of a key jobs report.
- European equities closed at the highest in a year, rallying as technology shares recovered from a recent slump and investors returned to risk assets after a rise in Treasury yields came to a halt.
- Asian stocks rose for a second day, with equity benchmarks in China and Indonesia leading the advance.
- The S&P/ASX 200 index reversed early gains to fall 0.8% to 6,714.10.

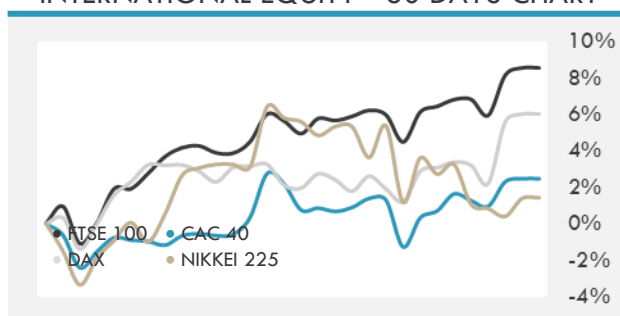
Source: Bloomberg, Financial Times, Reuters

INTERNATIONAL MARKETS INDICES

	Last Price	Daily %	YTD %	Δ10D Vol
World	1619.31	0.00%	2.58%	1.99%
Developed	2761.82	0.00%	2.67%	1.81%
Emerging	1317.85	0.00%	2.06%	0.55%
Frontier	2493.53	0.00%	-3.79%	0.77%
Europe	139.38	0.00%	5.51%	0.17%
Latin America	2192.36	0.00%	-10.58%	-0.52%
Asia Pacific	204.48	0.00%	2.28%	0.07%

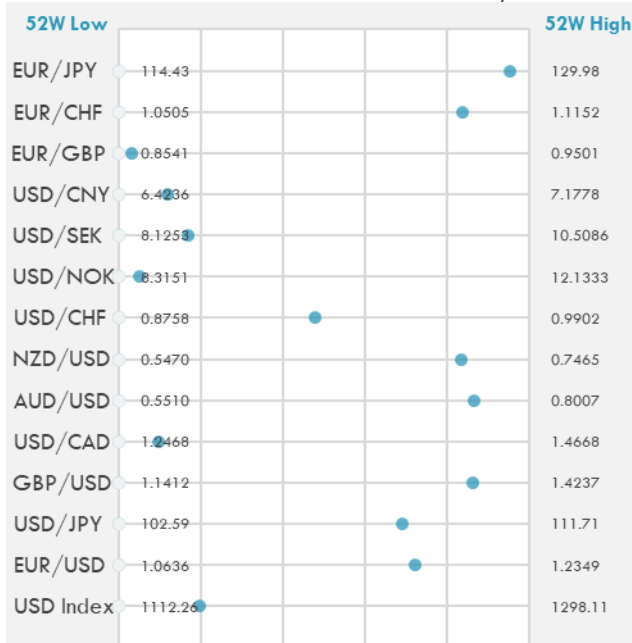
DEVELOPED VS EMERGING - 30 DAYS CHART

INTERNATIONAL EQUITY INDICES

	Last Price	Daily %	YTD %	Δ10D Vol
EuroStoxx 50	3786.05	0.00%	6.57%	0.07%
FTSE 100	6730.34	0.00%	4.18%	-0.10%
CAC 40	5924.97	0.00%	6.73%	0.01%
DAX	14437.94	0.00%	5.24%	-0.13%
Swiss SMI	10857.97	0.00%	1.44%	-0.69%
Nikkei 225	29036.56	0.03%	5.80%	0.19%
CSI 300	5032.87	1.24%	-3.42%	-0.55%

INTERNATIONAL EQUITY - 30 DAYS CHART


FOREIGN EXCHANGE MARKET

	Last Price	Daily %	Δ10D	Vol 25	ΔRR
Major USD Cross Rate					
USD Index	1149.09	0.32%	-0.35%	-	
EUR/USD	1.1871	-0.25%	-0.25%	-0.368	
USD/JPY	108.88	0.37%	0.02%	0.015	
GBP/USD	1.385	-0.30%	-1.36%	-0.593	
USD/CAD	1.268	0.33%	-0.67%	0.703	
AUD/USD	0.7671	-0.56%	-0.74%	-1.263	
NZD/USD	0.7133	-0.47%	-0.27%	-1.270	
USD/CHF	0.9305	0.30%	-0.39%	0.560	
USD/NOK	8.5103	0.48%	-1.48%	1.805	
USD/SEK	8.5299	0.35%	-0.01%	0.475	
USD/CNY	6.5143	0.12%	-0.06%	0.050	
Major EUR Cross Rate					
EUR/GBP	0.85711	0.04%	-3.50%	0.353	
EUR/CHF	1.10461	0.04%	-0.06%	0.580	
EUR/JPY	129.25	0.12%	-0.52%	-0.435	

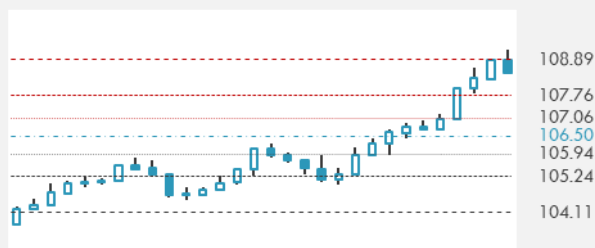
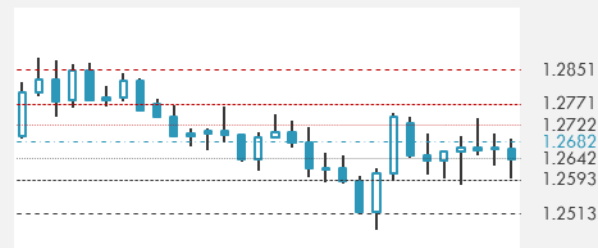
DISTANCE FROM 52 WEEKS LOW/HIGH


- Most Asian emerging currencies traded lower as volatile U.S. Treasury yields and dollar strength continue to weigh on risk sentiment.
- The dollar advanced against all of its Group-of-10 peers as Treasury yields crept higher before an auction of benchmark 10-year notes.
- The dollar-yen traded just below a nine-month high as U.S. yields retreated, with investors focusing on Treasury auctions for clues to the short-term directions for bonds.

Source: Bloomberg, Financial Times, Reuters

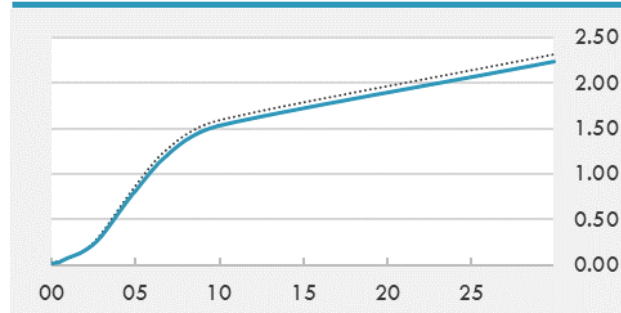
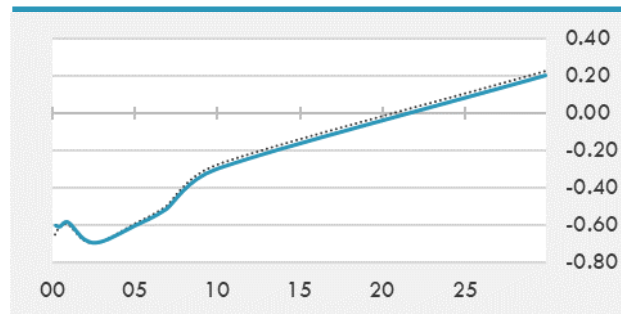
EUR/USD 30 DAYS SUPPORT & RESISTANCE

GBP/USD 30 DAYS SUPPORT & RESISTANCE

USD/JPY 30 DAYS SUPPORT & RESISTANCE

USD/CAD 30 DAYS SUPPORT & RESISTANCE


GLOBAL BOND INDICES

	Yield	ΔYield (in Bps)
Benchmark Indices		
US 10 Years Benchmark	1.5263	-0.064
EU 10 Years Benchmark	-0.301	-0.024
UK 10 Years Benchmark	0.727	-0.027
Sovereign Bonds		
US Treasury Bond	0.594	0
Eurozone Sovereign Bond	-0.428	0
Japan Sovereign Bond	-0.104	0
Corporate Bonds		
US Corporate TR	2.259	-0.026
US High Yield Bond TR	4.450	0.040
EUR Aggregate Corporate TR	0.360	-0.007
EUR High Yield TR	3.303	-0.073
USD Emerging Market IG & HY	3.982	0.003

US TREASURIES YIELD CURVE

EUR GENERIC YIELD CURVE


- Treasuries heavy as concession builds ahead of this week's auctions. Swap spreads tighten across the curve. Small block buyer of 5-year futures offered support from the lows with roll down of puts seen in options.
- Germany plans to sell 1.5 billion euros (\$1.8 billion) of 0 percent bonds due Aug 15, 2050 in an auction on Mar 17. The sale is a reopening of previously issued securities with 19 billion euros outstanding. Currently the securities are being quoted at a price to yield of 0.198 percent.

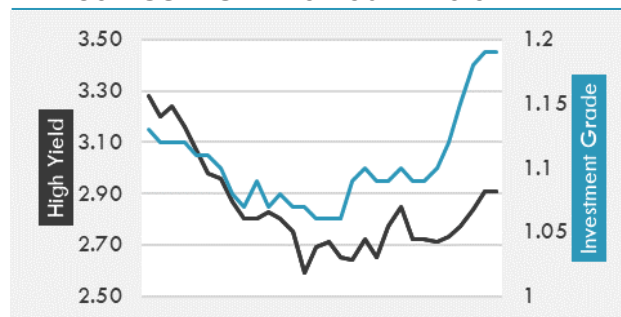
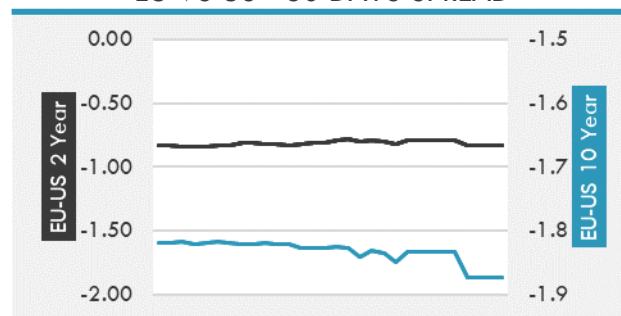
Source: Bloomberg, Financial Times, Economic times, Reuters

OVERNIGHT RATES - SWAPS

	Yield	ΔYield (in Bps)
3M USD LIBOR	0.183	0.000
3M EUR EURIBOR	-0.537	0.000
3M GBP LIBOR	0.076	0.000
3Y USD SWAP	0.426	-0.026
5Y USD SWAP	0.883	-0.054
10Y USD SWAP	1.545	-0.080
30Y USD SWAP	1.945	-0.100

FIXED INCOME SPREADS

	Spread	ΔSpread (in Bps)
USD 3M vs 10Y Spread	1.486	-0.061
USD 2Y vs 10Y Spread	1.364	-0.062
USD IG Spread	1.190	0.010
USD HY Spread	2.910	0.070
EU vs US 10Y Spread	-1.868	0.000
EU vs US 2Y Spread	-0.827	0.000
EM vs Benchmark Spread	274.600	3.400

USD CORPORATES - 30 DAYS SPREAD

EU VS US - 30 DAYS SPREAD


GLOBAL COMMODITIES MARKET

	Last Price	Daily %
Commodity Index	84.78	-0.75%

Energy

WTI Crude Future	63.25	-1.19%
Brent Crude Future	66.77	-1.11%
NYMEX Gasoline	202.26	-1.35%
NYMEX Heat Oil	188.5	-1.17%
ICE Gasoil	531.75	-1.12%
NYMEX Natural Gas	2.635	-1.01%

Precious Metals

Gold Spot \$/Oz	1711.31	-0.28%
Silver Spot \$/Oz	25.6153	-1.24%
Platinum Spot \$/Oz	1156.83	-1.41%
Palladium Spot \$/Oz	2309.61	0.07%
Gold Future	1708.7	-0.48%
Silver Future	25.69	-1.88%
Platinum Future	1156.8	-1.58%
Palladium Future	2295	0.12%

Base Metals

LME Aluminum	2169	0.00%
LME Copper	8780	0.00%
LME Zinc	2778	0.00%
LME Nickel	16082	0.00%
LME Lead	1966	0.00%
LME Tin	24435	0.00%

Agricultural

Corn CBT	538	-1.42%
Wheat CBT	650.5	-0.91%
Soybeans CBT	1429	-0.76%
Bean Meal CBT	414.2	-0.58%
Rough Rice CBT	13.125	-0.49%
MDE Palm Oil	3884	-0.79%
Soybean CBT	53.23	-0.60%
Coffee ICE	130.4	0.00%
Sugar #11 ICE	15.9	0.00%
Cotton #2 ICE	85.2	1.04%
Cocoa ICE	2553	0.00%
Ethanol CME	1.79	0.00%
Lumber CME	909.1	0.00%
Orange Juice ICE	111.9	0.00%
Live Cattle CME	119.65	0.00%
Feeder Cattle CME	142.075	0.00%
Lean Hogs CME	88.35	0.00%

COMMODITY INDEX SUPPORT & RESISTANCE

WTI OIL 30 DAYS SUPPORT & RESISTANCE


- Asian oil-related stocks were mostly down after crude futures fell on Tuesday, with WTI settling below \$65 amid technical signals the commodity may be overbought.
- Gold steadied after posting the biggest jump in two months as the dollar ticked higher and bond yields held a decline.

Source: Bloomberg, Reuters

GOLD 30 DAYS SUPPORT & RESISTANCE

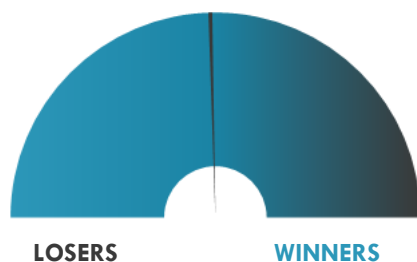
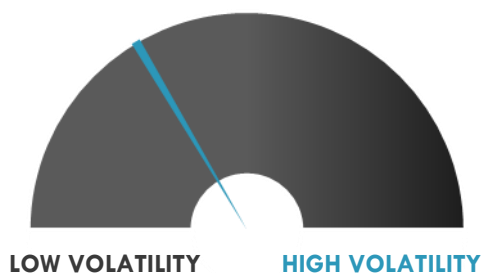
SILVER 30 DAYS SUPPORT & RESISTANCE


TOP 10 WINNERS

	Ticker	Last Price	Daily %
S&P 500 Stocks			
Tesla Inc	TSLA	673.58	+19.64%
Enphase Energy Inc	ENPH	148.7	+12.60%
Teradyne Inc	TER	113.34	+8.77%
Etsy Inc	ETSY	206.79	+8.69%
Lam Research Corp	LRCX	543.51	+8.14%
Applied Materials Inc	AMAT	114.22	+8.08%
NVIDIA Corp	NVDA	500.81	+8.00%
KLA Corp	KLAC	294.1	+7.32%
Xilinx Inc	XLNX	120.28	+7.31%
Monolithic Power Sys.	MPWR	323.86	+7.22%

TOP 10 LOSERS

	Ticker	Last Price	Daily %
S&P 500 Stocks			
APA Corp	APA	21.6	-6.78%
Discovery Inc	DISCA	63.01	-6.30%
NOV Inc	NOV	16.12	-5.34%
Hanesbrands Inc	HBI	19.79	-5.22%
Valero Energy Corp	VLO	76.58	-4.94%
Ingersoll Rand Inc	IR	48.09	-4.87%
ViacomCBS Inc	VIAC	79.66	-4.78%
Fox Corp	FOXA	40.32	-4.75%
HollyFrontier Corp	HFC	38.81	-4.48%
Fox Corp	FOX	38.24	-4.45%

S&P 500 DISTRIBUTION

S&P VOLATILITY INDEX


- NextEra Energy closed +4.4% after startup Mainspring Energy said it won a \$150M deal with NextEra's renewables unit to deploy a power generation technology that could help businesses avoid grid outages.
- Espey is down 9% after-hours as it announced suspension of dividend. The Board of Directors determined to suspend payment of a cash dividend, maintaining Espey's strong position to address the business challenges.
- AeroVironment subsidiary Arcturus UAV has been awarded a competitive task order valued at ~\$7M from the U.S. Special Operations Command for Mid-Endurance Unmanned Aircraft Systems program.
- Equitable has appointed Robin M. Raju as the Chief Financial Officer, effective April 1, pending approval from the Equitable Holdings Board of Directors. Mr. Raju succeeds Anders Malmstrom.
- Ballard Power Systems +7.2% post-market, adding to an 11% run-up in yesterday's regular session, on news that Canadian Pacific railroad will employ Ballard fuel cell modules for its Hydrogen Locomotive Program.
- MediciNova has climbed ~60.5% in the post-market after the company announced a development agreement with the Biomedical Advanced Research and Development Authority for its small molecule candidate MN-166.
- In the first earnings report since its spinoff from SAP, Qualtrics reports Q4 results that meet analyst estimates with \$213.6M in revenue (+24% Y/Y) and top consensus with a \$0.02 loss per share, two cents better than expected.

KEY ECONOMIC INDICATORS

Country	Event	Surv (M)	Actual	Prior	Time
Australia	Westpac Consumer Conf SA MoM	--	2.60%	1.90%	1:30
Canada	Bank of Canada Rate Decision	0.25%	--	0.25%	17:00
China	CPI YoY	-0.30%	-0.20%	-0.30%	3:30
China	PPI YoY	1.50%	1.70%	0.30%	3:30
China	Money Supply M2 YoY	9.40%	--	9.40%	
China	New Yuan Loans CNY	9.50E+11	--	3.58E+12	
Estonia	Unemployment Rate	--	--	8.70%	
Finland	Trade Balance	--	--	1.01E+09	9:00
France	Industrial Production MoM	0.50%	--	-0.80%	9:45
France	Industrial Production YoY	-2.80%	--	-3.00%	9:45
Greece	Industrial Production YoY	--	--	3.30%	12:00
Greece	CPI YoY	--	--	-2.00%	12:00
Greece	CPI EU Harmonized YoY	--	--	-2.40%	12:00
Portugal	CPI EU Harmonized YoY	--	--	0.30%	13:00
Portugal	CPI EU Harmonized MoM	--	--	-0.50%	13:00
United States	CPI MoM	0.40%	--	0.30%	15:30
United States	MBA Mortgage Applications	--	--	0.50%	14:00
United States	Real Avg Weekly Earnings YoY	--	--	6.10%	15:30
United States	CPI Ex Food and Energy MoM	0.20%	--	0.00%	15:30
United States	Monthly Budget Statement	-3.05E+11	--	-2.35E+11	21:00

Source: Bloomberg

Banque BEMO sal

Head Office - Private and Corporate Banking

Elias Sarkis Ave., Bemo Bldg , Ashrafieh - Lebanon
Tel: +961 1 200 505 Fax: +961 1 217 860

Research & Development research@bemobank.com

Elias Sarkis Ave., Bemo Bldg , Ashrafieh - Lebanon
Tel: +961 1 200 505 Fax: +961 1 217 860

Disclaimer:

This report is published for information purposes only. The information herein has been compiled from, or based upon sources considered to be reliable (Bloomberg, SeekingAlpha, DailyStar...), but we do not guarantee or assume responsibility for its completeness and accuracy. This document should not be construed as a solicitation to take part in any investment, or as constituting any representation or warranty on our part. This report is not to be relied upon in substitution for the exercise of specialists.

We may not have taken any steps to ensure that the securities referred to in this report are suitable for any particular investor. The investments and services contained or referred to herein are not purported to be exhaustive, any person considering an investment should seek specialist advice on the suitability of an investment.

Nothing in this report constitutes investment, legal, accounting or tax advice, or a representation that any investment or strategy is suitable or appropriate to your individual circumstances, or otherwise constitutes a personal recommendation. Clients understand that it is their responsibility to seek legal and/or tax advice regarding the legal and tax consequences of their investment transactions. The consequences of any action taken on the basis of information contained herein are solely the responsibility of the recipient.

Investment instruments are subject to risk, including possible loss of principal amount invested. Past performance should not be taken as an indication or guarantee of future performance, and no representation or warranty, express or implied, is made regarding future performance. The value of securities and financial instruments is subject to exchange rate fluctuation that may have a positive or adverse effect on the price or income of such securities or financial instruments. Some investments mentioned in this report may have a high level of volatility. High volatility investments may experience sudden and large falls in their value causing losses when that investment is realized. Some investments may not be readily realizable and it may be difficult to sell or realize those investments, similarly it may prove difficult to obtain reliable information about the value, or risks, to which such an investment is exposed.

This report may provide the addresses of websites or references. We have not reviewed any such site and takes no responsibility for the content contained therein. Such address or reference is provided solely for convenience and information. Accessing such website through this report shall be at the recipients own risk.