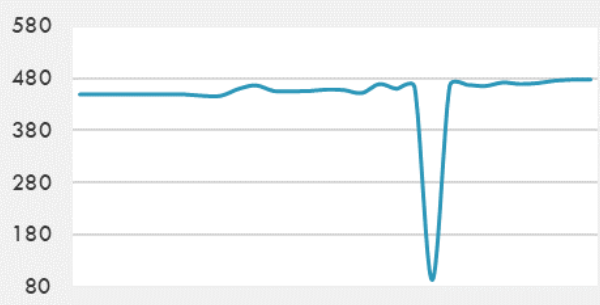
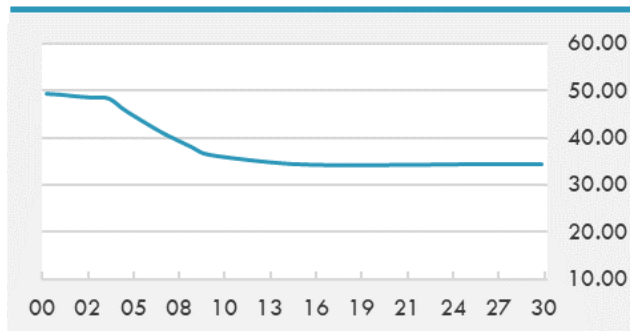


BEIRUT STOCK EXCHANGE

| | Last | Daily % | YTD % | Dividend % |
|---------------------------------------|--------|---------|--------|------------|
| MSCI Lebanon | 476.47 | 0.40% | 8.85% | |
| Development and Reconstruction | | | | |
| Solidere A | 20.03 | 0.15% | 8.27% | |
| Solidere B | 20.23 | 1.15% | 10.61% | |
| Banking | | | | |
| Audi Listed | 1.69 | 0.00% | 38.52% | |
| BLC Listed | 0.93 | 0.00% | 0.00% | |
| BOB Listed | 17.8 | 0.00% | 0.00% | |
| Byblos Listed | 0.6 | 9.09% | 13.21% | |
| BEMO Listed | 1.2 | 0.00% | 0.00% | |
| BLOM Listed | 2.22 | 0.00% | 7.25% | |
| Trading | | | | |
| RYMCO | 3.19 | 0.00% | 0.00% | |
| Industrial | | | | |
| Holcim | 14.9 | 0.00% | 2.76% | |
| Ciments Blancs | 4.1 | 0.00% | 0.00% | |

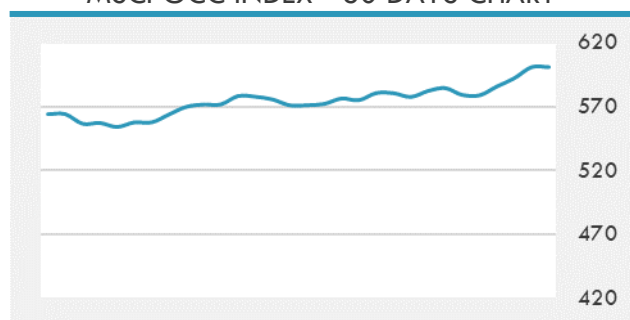
MSCI LEBANON INDEX - 30 DAYS CHART

LEBANESE USD SOVEREIGN CURVE


- Tadawul All Share Index has ended Wednesday's trading session in the green zone. TASI increased by around 1.3% or 122.25 points to settle at 9,898.45 points by the end of Wednesday's trading session, recording its highest level since 14 June 2015.
- The UAE stock markets have resumed the upward performance by the end of Wednesday's trading session. The benchmark index of the Dubai Financial Market went up by 0.34% to close Wednesday's session at 2,547.34 points.

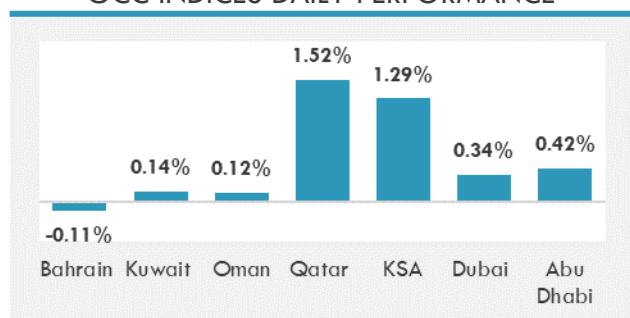
Source: Daily Star, Gulf Business, Mubasher, Bloomberg, Businessnews LB

GCC EQUITY INDICES

| | Last Price | Daily % | YTD % |
|-----------|------------|---------|--------|
| Bahrain | 1465.43 | -0.11% | -1.67% |
| Kuwait | 5741.47 | 0.14% | 3.52% |
| Oman | 3701.51 | 0.12% | 1.17% |
| Qatar | 10272.11 | 1.52% | -1.63% |
| KSA | 9595.45 | 1.29% | 10.43% |
| Dubai | 2547.34 | 0.34% | 2.57% |
| Abu Dhabi | 5606.82 | 0.42% | 11.38% |

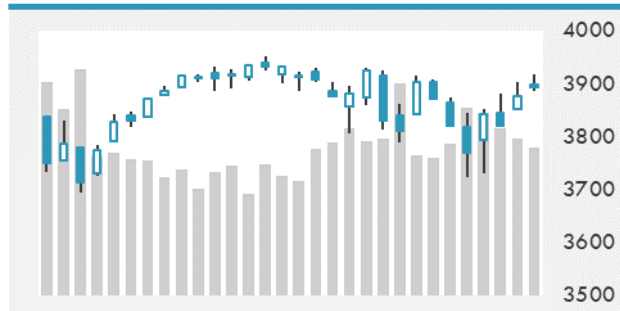
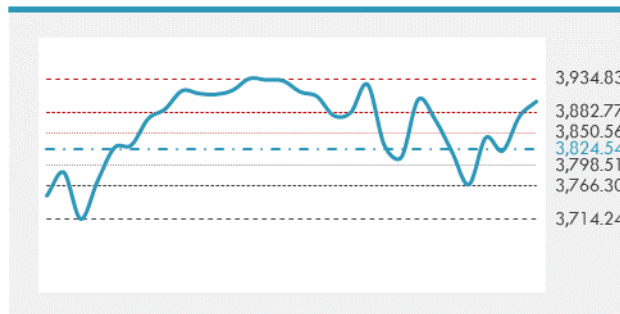
MSCI GCC INDEX - 30 DAYS CHART

LOCAL/GCC FOREIGN EXCHANGE

| | Cross | Last Price |
|---------------------|---------|------------|
| Lebanese Pound Spot | USD/LBP | 1515.5 |
| Bahraini Dinar Spot | USD/BHD | 0.37709 |
| Kuwaiti Dinar Spot | USD/KWD | 0.3022 |
| Omani Rial Spot | USD/OMR | 0.385 |
| Qatari Riyal Spot | USD/QAR | 3.6418 |
| Saudi Riyal Spot | USD/SAR | 3.7506 |
| UAE Dirham Spot | USD/AED | 3.673 |

GCC INDICES DAILY PERFORMANCE


UNITED STATES EQUITY MARKET INDICES

| | Last Price | Daily % | YTD % | Δ10D Vol |
|------------------------|------------|---------|--------|----------|
| Major Indices | | | | |
| Dow Jones | 32297.02 | 0.00% | 5.52% | -1.43% |
| S&P 500 | 3898.81 | 0.00% | 3.80% | -3.91% |
| Nasdaq | 13068.83 | 0.00% | 1.40% | -4.45% |
| Sectors Indices | | | | |
| Discretionary | 1308.34 | 0.00% | 0.44% | -6.09% |
| Staples | 672.08 | 0.00% | -3.48% | 0.04% |
| Energy | 399.8 | 0.00% | 39.72% | -1.49% |
| Financials | 571.75 | 0.00% | 16.58% | -1.14% |
| Healthcare | 1322.33 | 0.00% | -0.13% | -0.69% |
| Industrials | 804.77 | 0.00% | 7.37% | -2.41% |
| IT | 2272.6 | 0.00% | -0.82% | -4.54% |
| Materials | 488.82 | 0.00% | 7.27% | -3.14% |
| Com. Services | 237.4 | 0.00% | 6.98% | -4.53% |
| Utilities | 311.75 | 0.00% | -2.29% | -1.09% |
| Real Estate | 235.07 | 0.00% | 3.15% | -0.45% |

S&P 500 INDEX - 30 DAYS CHART

S&P 500 SUPPORT & RESISTANCE


- Futures contracts on three major U.S. equity indexes climbed, signaling a positive open for the underlying benchmarks after Tuesday's rally as attention turns to inflation data.
- European equities rose for a third day, closing in on a record high reached last year, as investors remained upbeat about the prospects of an economic recovery.
- Asia stocks advanced for a third day with markets in China and South Korea leading gains. The Chinext index of Chinese small caps was the best performer among the region's benchmarks, along with the CSI 300 Index and South Korea's Kospi.

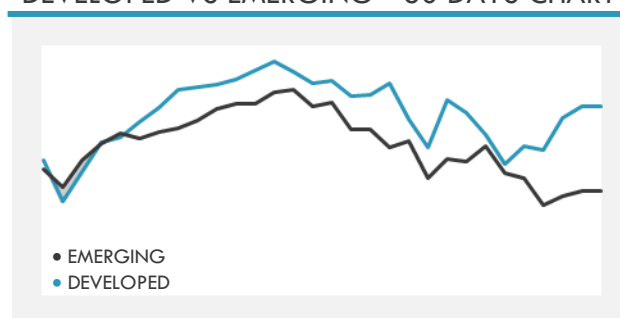
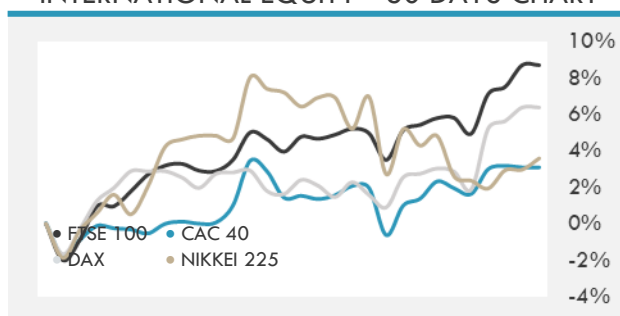
Source: Bloomberg, Financial Times, Reuters

INTERNATIONAL MARKETS INDICES

| | Last Price | Daily % | YTD % | Δ10D Vol |
|---------------|------------|---------|--------|----------|
| World | 1627.33 | 0.00% | 3.09% | -0.74% |
| Developed | 2775.34 | 0.00% | 3.17% | -1.49% |
| Emerging | 1324.9 | 0.00% | 2.61% | 0.03% |
| Frontier | 2503.44 | 0.00% | -3.41% | 0.25% |
| Europe | 139.97 | 0.00% | 5.96% | -0.22% |
| Latin America | 2235.11 | 0.00% | -8.84% | -3.71% |
| Asia Pacific | 204.84 | 0.00% | 2.46% | -0.94% |

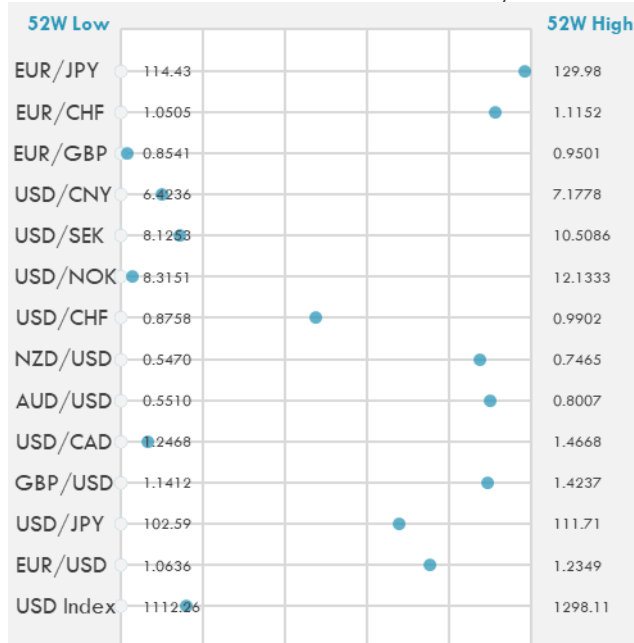
INTERNATIONAL EQUITY INDICES

| | Last Price | Daily % | YTD % | Δ10D Vol |
|--------------|------------|---------|--------|----------|
| EuroStoxx 50 | 3819.92 | 0.00% | 7.52% | -0.35% |
| FTSE 100 | 6725.6 | 0.00% | 4.10% | -0.01% |
| CAC 40 | 5990.55 | 0.00% | 7.91% | 0.28% |
| DAX | 14540.25 | 0.00% | 5.99% | -0.93% |
| Swiss SMI | 10909.77 | 0.00% | 1.93% | -0.51% |
| Nikkei 225 | 29211.64 | 0.60% | 6.44% | -2.02% |
| CSI 300 | 5115.23 | 2.23% | -1.84% | 0.11% |

DEVELOPED VS EMERGING - 30 DAYS CHART

INTERNATIONAL EQUITY - 30 DAYS CHART


FOREIGN EXCHANGE MARKET

| | Last Price | Daily % | Δ10D | Vol 25 | ΔRR |
|-----------------------------|------------|---------|--------|--------|-----|
| Major USD Cross Rate | | | | | |
| USD Index | 1142.15 | 0.01% | -0.69% | - | |
| EUR/USD | 1.1929 | 0.00% | -0.84% | -0.258 | |
| USD/JPY | 108.78 | 0.37% | 0.02% | -0.075 | |
| GBP/USD | 1.394 | 0.06% | -0.92% | -0.583 | |
| USD/CAD | 1.2611 | -0.06% | -3.43% | 0.710 | |
| AUD/USD | 0.7762 | 0.34% | -5.33% | -1.063 | |
| NZD/USD | 0.7214 | 0.25% | -4.52% | -1.155 | |
| USD/CHF | 0.9301 | 0.03% | 0.08% | 0.468 | |
| USD/NOK | 8.4201 | -0.10% | -5.79% | 1.680 | |
| USD/SEK | 8.4694 | -0.11% | -3.57% | 0.465 | |
| USD/CNY | 6.4990 | -0.10% | -0.27% | 0.200 | |
| Major EUR Cross Rate | | | | | |
| EUR/GBP | 0.85576 | -0.03% | 0.07% | 0.358 | |
| EUR/CHF | 1.10954 | 0.05% | -0.75% | 0.585 | |
| EUR/JPY | 129.76 | 0.36% | -1.03% | -0.385 | |

DISTANCE FROM 52 WEEKS LOW/HIGH


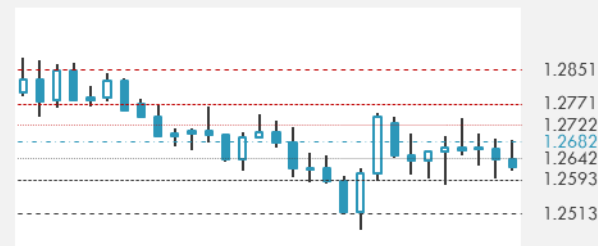
- The Australian and New Zealand dollars advance to a one-week high as gains in Chinese stocks and U.S. equity futures stoke risk appetite.
- The greenback fell as U.S. shares advanced following Congressional passage of a \$1.9 trillion fiscal package while 10-year Treasuries rose after auction results.
- The Canadian dollar was little changed after the nation's central bank maintained its current pace of quantitative easing and kept forward guidance unchanged.

Source: Bloomberg, Financial Times, Reuters

EUR/USD 30 DAYS SUPPORT & RESISTANCE

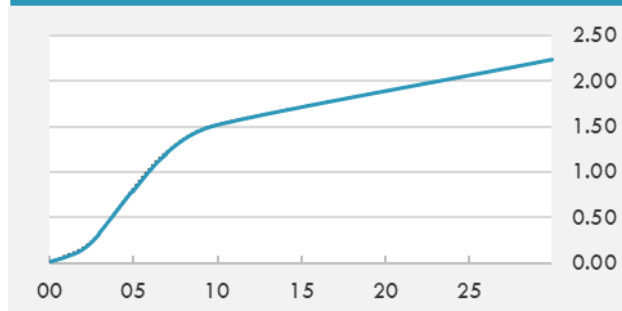
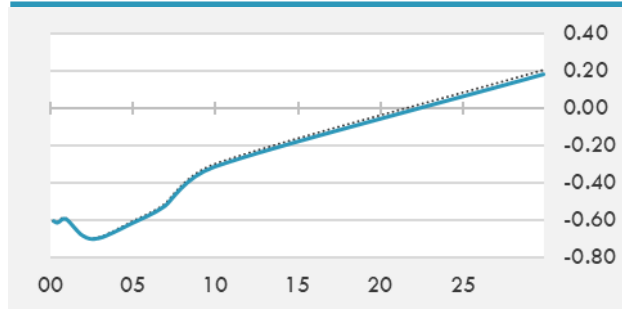
GBP/USD 30 DAYS SUPPORT & RESISTANCE

USD/JPY 30 DAYS SUPPORT & RESISTANCE

USD/CAD 30 DAYS SUPPORT & RESISTANCE


GLOBAL BOND INDICES

| | Yield | ΔYield (in Bps) |
|-----------------------------|--------|-----------------|
| Benchmark Indices | | |
| US 10 Years Benchmark | 1.5178 | -0.008 |
| EU 10 Years Benchmark | -0.313 | -0.012 |
| UK 10 Years Benchmark | 0.714 | -0.013 |
| Sovereign Bonds | | |
| US Treasury Bond | 0.594 | 0 |
| Eurozone Sovereign Bond | -0.428 | 0 |
| Japan Sovereign Bond | -0.104 | 0 |
| Corporate Bonds | | |
| US Corporate TR | 2.229 | -0.029 |
| US High Yield Bond TR | 4.430 | -0.020 |
| EUR Aggregate Corporate TR | 0.360 | -0.001 |
| EUR High Yield TR | 3.280 | -0.023 |
| USD Emerging Market IG & HY | 3.951 | -0.031 |

US TREASURIES YIELD CURVE

EUR GENERIC YIELD CURVE


- Traders have taken the first two of three key Treasury auctions in their stride this week, a reassuring sign for a market facing another big hurdle in the last one.
- Expectations for a very dovish ECB meeting on Thursday are overdone, according to Mizuho, which recommends selling German 10-year bonds.
- Italian bonds and bunds trim their advance alongside Treasuries ahead of a \$38b U.S. sale of 10-year debt and before Thursday's ECB monetary policy decision.

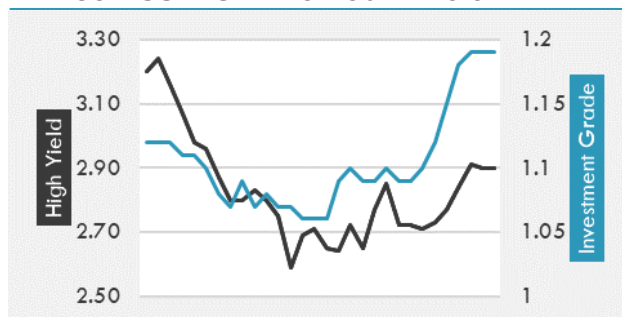
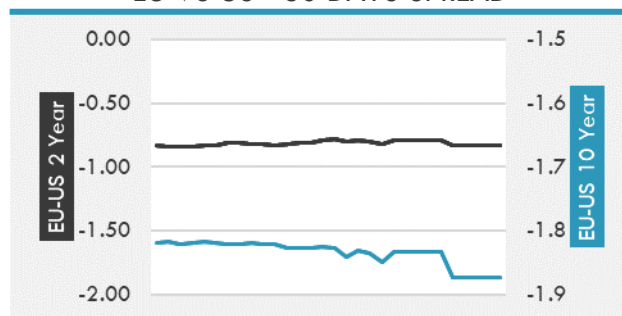
Source: Bloomberg, Financial Times, Economic times, Reuters

OVERNIGHT RATES - SWAPS

| | Yield | ΔYield (in Bps) |
|----------------|--------|-----------------|
| 3M USD LIBOR | 0.177 | 0.000 |
| 3M EUR EURIBOR | -0.540 | 0.000 |
| 3M GBP LIBOR | 0.077 | 0.000 |
| 3Y USD SWAP | 0.415 | -0.011 |
| 5Y USD SWAP | 0.868 | -0.015 |
| 10Y USD SWAP | 1.526 | -0.019 |
| 30Y USD SWAP | 1.925 | -0.020 |

FIXED INCOME SPREADS

| | Spread | ΔSpread (in Bps) |
|------------------------|---------|------------------|
| USD 3M vs 10Y Spread | 1.477 | -0.009 |
| USD 2Y vs 10Y Spread | 1.361 | -0.003 |
| USD IG Spread | 1.190 | 0.000 |
| USD HY Spread | 2.900 | -0.010 |
| EU vs US 10Y Spread | -1.868 | 0.000 |
| EU vs US 2Y Spread | -0.827 | 0.000 |
| EM vs Benchmark Spread | 273.700 | -0.900 |

USD CORPORATES - 30 DAYS SPREAD

EU VS US - 30 DAYS SPREAD


GLOBAL COMMODITIES MARKET

| | Last Price | Daily % |
|-----------------|------------|---------|
| Commodity Index | 85.71 | 0.43% |

Energy

| | | |
|--------------------|--------|--------|
| WTI Crude Future | 64.71 | 0.42% |
| Brent Crude Future | 68.3 | 0.59% |
| NYMEX Gasoline | 208.17 | 0.11% |
| NYMEX Heat Oil | 191.48 | -0.13% |
| ICE Gasoil | 539.25 | 1.65% |
| NYMEX Natural Gas | 2.682 | -0.37% |

Precious Metals

| | | |
|----------------------|---------|--------|
| Gold Spot \$/Oz | 1732.45 | 0.33% |
| Silver Spot \$/Oz | 26.2715 | 0.22% |
| Platinum Spot \$/Oz | 1220.54 | 1.25% |
| Palladium Spot \$/Oz | 2316.43 | -0.04% |
| Gold Future | 1730.2 | 0.49% |
| Silver Future | 26.375 | 0.94% |
| Platinum Future | 1222 | 1.68% |
| Palladium Future | 2302.5 | 0.41% |

Base Metals

| | | |
|--------------|-------|-------|
| LME Aluminum | 2168 | 0.00% |
| LME Copper | 8862 | 0.00% |
| LME Zinc | 2764 | 0.00% |
| LME Nickel | 16050 | 0.00% |
| LME Lead | 1947 | 0.00% |
| LME Tin | 25125 | 0.00% |

Agricultural

| | | |
|-------------------|---------|--------|
| Corn CBT | 535 | 0.19% |
| Wheat CBT | 650 | -0.38% |
| Soybeans CBT | 1406.25 | -0.25% |
| Bean Meal CBT | 405.8 | -0.25% |
| Rough Rice CBT | 13.015 | -0.04% |
| MDE Palm Oil | 3991 | 0.43% |
| Soybean CBT | 53.42 | -0.17% |
| Coffee ICE | 130.85 | 0.00% |
| Sugar #11 ICE | 15.96 | 0.00% |
| Cotton #2 ICE | 86.57 | 1.58% |
| Cocoa ICE | 2573 | 0.00% |
| Ethanol CME | 1.801 | 0.00% |
| Lumber CME | 903.7 | 0.00% |
| Orange Juice ICE | 113.7 | 0.00% |
| Live Cattle CME | 118.975 | 0.00% |
| Feeder Cattle CME | 141.725 | 0.00% |
| Lean Hogs CME | 97.4 | 0.00% |

COMMODITY INDEX SUPPORT & RESISTANCE

WTI OIL 30 DAYS SUPPORT & RESISTANCE


- Saudi Arabia said it would guarantee global energy security and deter further attacks on its infrastructure, days after a missile and drone assault on the world's largest oil-export terminal.
- Gold climbed as investors weighed the prospects of further U.S. stimulus and the latest reading on inflation.

Source: Bloomberg, Reuters

GOLD 30 DAYS SUPPORT & RESISTANCE

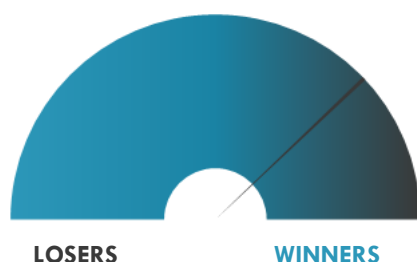
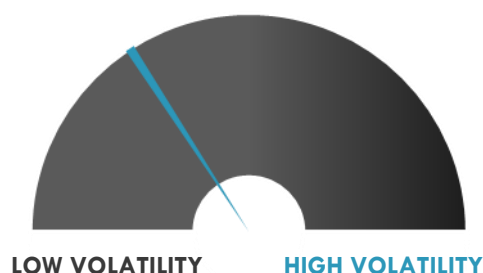
SILVER 30 DAYS SUPPORT & RESISTANCE


TOP 10 WINNERS

| | Ticker | Last Price | Daily % |
|---------------------------|--------|------------|---------|
| S&P 500 Stocks | | | |
| Franklin Resources Inc | BEN | 28.62 | +9.82% |
| Mosaic Co/The | MOS | 33.06 | +7.41% |
| Boeing Co/The | BA | 245.34 | +6.39% |
| Valero Energy Corp | VLO | 81.37 | +6.25% |
| Discovery Inc | DISCK | 56.01 | +5.74% |
| Howmet Aerospace Inc | HWM | 31.45 | +5.68% |
| HollyFrontier Corp | HFC | 40.97 | +5.57% |
| Corteva Inc | CTVA | 47 | +5.12% |
| ONEOK Inc | OKE | 50.95 | +4.75% |
| Westinghouse | WAB | 76.25 | +4.48% |

TOP 10 LOSERS

| | Ticker | Last Price | Daily % |
|---------------------------|--------|------------|---------|
| S&P 500 Stocks | | | |
| General Electric Co | GE | 13.25 | -5.36% |
| NRG Energy Inc | NRG | 40.74 | -4.88% |
| Lam Research Corp | LRCX | 518.7 | -4.56% |
| PerkinElmer Inc | PKI | 120.35 | -4.45% |
| Micron Technology Inc | MU | 85.41 | -4.36% |
| Hologic Inc | HOLX | 68.76 | -4.34% |
| Twitter Inc | TWTR | 64.83 | -3.98% |
| Western Digital Corp | WDC | 66.58 | -3.97% |
| Teradyne Inc | TER | 108.91 | -3.91% |
| KLA Corp | KLAC | 283.45 | -3.62% |

S&P 500 DISTRIBUTION

S&P VOLATILITY INDEX


- SPAC 890 5th Avenue Partners gained 8.3% in after hours trading on a report that the company is in talks for a merger with media company BuzzFeed.
- Hess Midstream -5.7% post-market after a subsidiary of Hess Corp. and an affiliate of Global Infrastructure Partners announced a secondary offering of 6M shares.
- Skillz is 3.1% lower following its first earnings report since coming public via a SPAC merger in December.
- Asana shares are up 6.4% after reporting record Q4 sales of \$68.4M, up 57% on the year and nearly \$6M above consensus. The \$0.22 loss per share was four cents better than expected.
- Tattooed Chef falls after issuing guidance just slightly below expectations. The company sees FY21 revenue of \$222M vs. \$224M consensus. Tattooed Chef management reiterated that the company still sees a long runway for growth, particularly in conventional food retailers.
- Cloudera falls 9.2% after hours despite topping Q4 estimates for the top and bottom lines. Total revenue was up 7% Y/Y to \$226.6M. Subscription sales increased 14% to \$206.8M.
- Oracle shares dip 2.8% after hours following fiscal Q3 revenue that only topped consensus estimates by \$20M, increasing 3% Y/Y to \$10.09B. The \$1.16 EPS was a solid \$0.05 above consensus.
- MSG Networks rose 16% in after hours trading on a report that the company is considering a merger with Madison Square Garden Entertainment Corp.

KEY ECONOMIC INDICATORS

| Country | Event | Surv (M) | Actual | Prior | Time |
|----------------|-----------------------------------|----------|-----------|-----------|-------|
| China | Foreign Direct Investment YoY CNY | -- | -- | 4.60% | |
| Estonia | Trade Balance | -- | -1.18E+08 | -1.31E+08 | 8:00 |
| Estonia | Imports YoY | -- | 13% | 10% | 8:00 |
| Eurozone | ECB Main Refinancing Rate | 0.00% | -- | 0.00% | 14:45 |
| Eurozone | ECB Deposit Facility Rate | -0.50% | -- | -0.50% | 14:45 |
| Eurozone | ECB Marginal Lending Facility | 0.25% | -- | 0.25% | 14:45 |
| Ireland | CPI EU Harmonized YoY | -- | -- | -0.10% | 13:00 |
| Ireland | CPI YoY | -- | -- | -0.20% | 13:00 |
| Ireland | CPI EU Harmonized MoM | -- | -- | 0.20% | 13:00 |
| Ireland | CPI MoM | -- | -- | 0.10% | 13:00 |
| Japan | PPI YoY | -0.70% | -0.70% | -1.60% | 1:50 |
| Japan | PPI MoM | 0.50% | 0.40% | 0.40% | 1:50 |
| Japan | Japan Buying Foreign Bonds | -- | 9.89E+10 | -1.72E+12 | 1:50 |
| Japan | Foreign Buying Japan Stocks | -- | -1.37E+11 | -4.55E+11 | 1:50 |
| Japan | Foreign Buying Japan Bonds | -- | 7.55E+11 | -1.28E+12 | 1:50 |
| Japan | Japan Buying Foreign Stocks | -- | 1.77E+11 | -4.59E+11 | 1:50 |
| United Kingdom | RICS House Price Balance | 45% | 52% | 50% | 2:01 |
| United States | Initial Jobless Claims | 725000 | -- | 745000 | 15:30 |
| United States | Continuing Claims | 4.20E+06 | -- | 4.30E+06 | 15:30 |
| United States | Langer Consumer Comfort | -- | -- | 48.9 | 16:45 |

Source: Bloomberg

Banque BEMO sal

Head Office - Private and Corporate Banking

Elias Sarkis Ave., Bemo Bldg , Ashrafieh - Lebanon
Tel: +961 1 200 505 Fax: +961 1 217 860

Research & Development research@bemobank.com

Elias Sarkis Ave., Bemo Bldg , Ashrafieh - Lebanon
Tel: +961 1 200 505 Fax: +961 1 217 860

Disclaimer:

This report is published for information purposes only. The information herein has been compiled from, or based upon sources considered to be reliable (Bloomberg, SeekingAlpha, DailyStar...), but we do not guarantee or assume responsibility for its completeness and accuracy. This document should not be construed as a solicitation to take part in any investment, or as constituting any representation or warranty on our part. This report is not to be relied upon in substitution for the exercise of specialists.

We may not have taken any steps to ensure that the securities referred to in this report are suitable for any particular investor. The investments and services contained or referred to herein are not purported to be exhaustive, any person considering an investment should seek specialist advice on the suitability of an investment.

Nothing in this report constitutes investment, legal, accounting or tax advice, or a representation that any investment or strategy is suitable or appropriate to your individual circumstances, or otherwise constitutes a personal recommendation. Clients understand that it is their responsibility to seek legal and/or tax advice regarding the legal and tax consequences of their investment transactions. The consequences of any action taken on the basis of information contained herein are solely the responsibility of the recipient.

Investment instruments are subject to risk, including possible loss of principal amount invested. Past performance should not be taken as an indication or guarantee of future performance, and no representation or warranty, express or implied, is made regarding future performance. The value of securities and financial instruments is subject to exchange rate fluctuation that may have a positive or adverse effect on the price or income of such securities or financial instruments. Some investments mentioned in this report may have a high level of volatility. High volatility investments may experience sudden and large falls in their value causing losses when that investment is realized. Some investments may not be readily realizable and it may be difficult to sell or realize those investments, similarly it may prove difficult to obtain reliable information about the value, or risks, to which such an investment is exposed.

This report may provide the addresses of websites or references. We have not reviewed any such site and takes no responsibility for the content contained therein. Such address or reference is provided solely for convenience and information. Accessing such website through this report shall be at the recipients own risk.