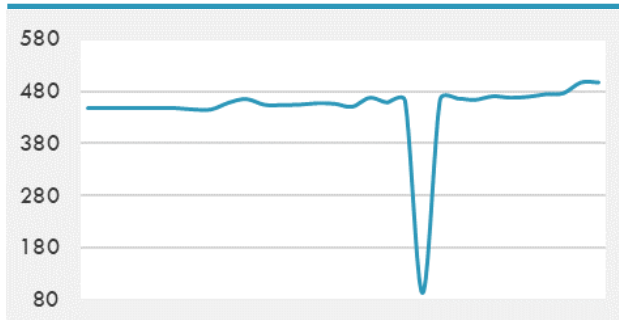
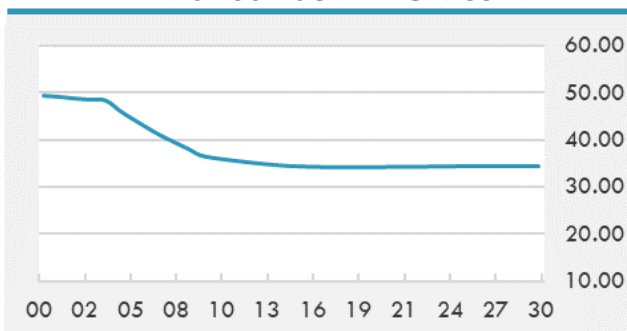


BEIRUT STOCK EXCHANGE

	Last	Daily %	YTD %	Dividend %
MSCI Lebanon	497.18	4.35%	13.58%	
Development and Reconstruction				
Solidere A	20.98	4.74%	13.41%	
Solidere B	20.87	3.16%	14.11%	
Banking				
Audi Listed	1.73	2.37%	41.80%	
BLC Listed	0.93	0.00%	0.00%	
BOB Listed	17.8	0.00%	0.00%	
Byblos Listed	0.6	0.00%	13.21%	
BEMO Listed	1.2	0.00%	0.00%	
BLOM Listed	2.22	0.00%	7.25%	
Trading				
RYMCO	3.19	0.00%	0.00%	
Industrial				
Holcim	14.9	0.00%	2.76%	
Ciments Blancs	4.1	0.00%	0.00%	

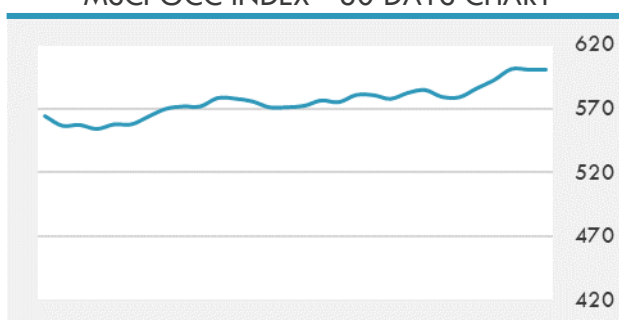
MSCI LEBANON INDEX - 30 DAYS CHART

LEBANESE USD SOVEREIGN CURVE


- The Tadawul All Share Index levelled down by 0.08% or 7.66 points on Thursday, settling at the level of 9,587.79 points.
- The UAE stock markets have kept their upward performance for the second session in a row by the end of Thursday's trading session.
- The board of Commercial Bank International has recommended to increase the bank's capital to AED 2.167 billion by issuing 430 million new shares at a price of AED 1 per share.

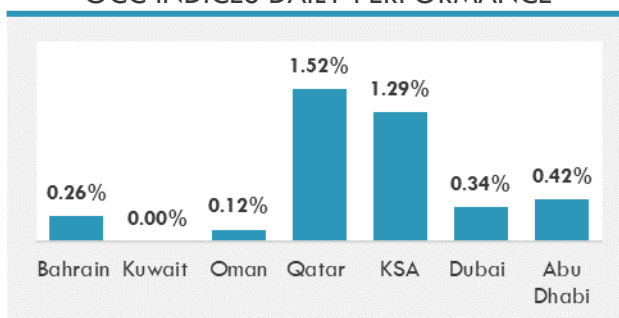
Source: Daily Star, Gulf Business, Mubasher, Bloomberg, Businessnews LB

GCC EQUITY INDICES

	Last Price	Daily %	YTD %
Bahrain	1469.25	0.26%	-1.38%
Kuwait	5741.47	0.00%	3.52%
Oman	3701.51	0.12%	1.17%
Qatar	10272.11	1.52%	-2.02%
KSA	9595.45	1.29%	10.34%
Dubai	2547.34	0.34%	3.27%
Abu Dhabi	5606.82	0.42%	11.72%

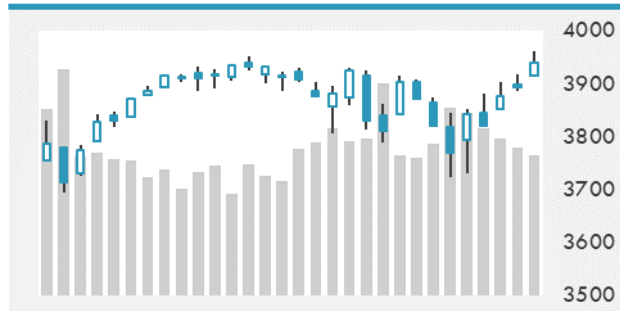
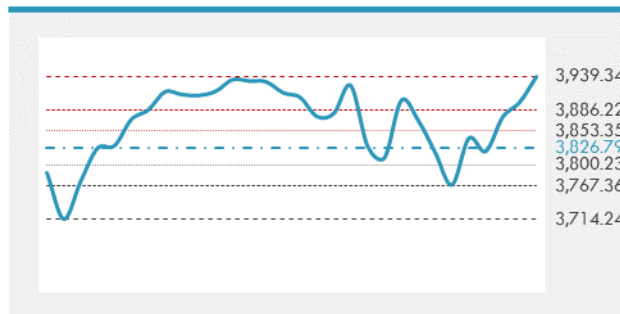
MSCI GCC INDEX - 30 DAYS CHART

LOCAL/GCC FOREIGN EXCHANGE

	Cross	Last Price
Lebanese Pound Spot	USD/LBP	1515.5
Bahraini Dinar Spot	USD/BHD	0.37709
Kuwaiti Dinar Spot	USD/KWD	0.3022
Omani Rial Spot	USD/OMR	0.385
Qatari Riyal Spot	USD/QAR	3.6418
Saudi Riyal Spot	USD/SAR	3.7506
UAE Dirham Spot	USD/AED	3.673

GCC INDICES DAILY PERFORMANCE


UNITED STATES EQUITY MARKET INDICES

	Last Price	Daily %	YTD %	Δ10D Vol
Major Indices				
Dow Jones	32485.59	0.00%	6.14%	-3.17%
S&P 500	3939.34	0.00%	4.88%	-0.01%
Nasdaq	13398.67	0.00%	3.96%	2.32%
Sectors Indices				
Discretionary	1328.75	0.00%	2.01%	0.81%
Staples	670.87	0.00%	-3.65%	-3.46%
Energy	400.11	0.00%	39.83%	-5.19%
Financials	570.15	0.00%	16.26%	-3.81%
Healthcare	1330.59	0.00%	0.50%	-0.45%
Industrials	805.43	0.00%	7.46%	-1.57%
IT	2320.84	0.00%	1.29%	1.61%
Materials	491.51	0.00%	7.86%	-2.45%
Com. Services	241.59	0.00%	8.86%	1.27%
Utilities	310.93	0.00%	-2.55%	-4.12%
Real Estate	238.6	0.00%	4.70%	-1.86%

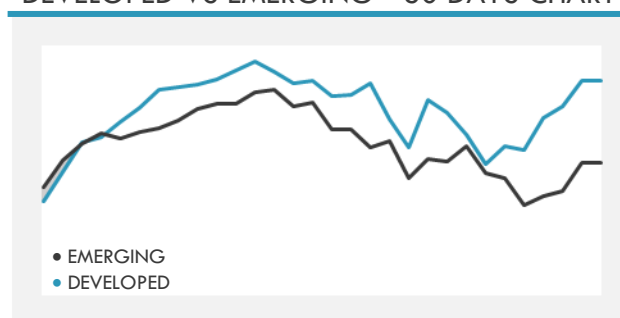
S&P 500 INDEX - 30 DAYS CHART

S&P 500 SUPPORT & RESISTANCE


- Futures on the Nasdaq 100 Index advanced the most among contracts for U.S. equities benchmarks, signaling gains for the tech-heavy benchmark that has been volatile in recent sessions.
- European equities advanced to the highest level in more than a year as the ECB vowed to boost purchases of government debt in a bid to limit the impact of rising bond yields on the region's recovery.
- Asian stocks advanced, heading for a fourth day of gains.

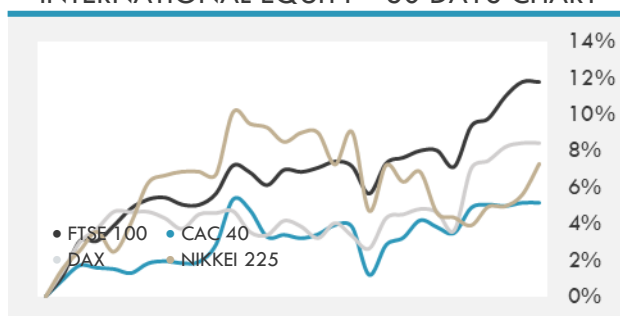
Source: Bloomberg, Financial Times, Reuters

INTERNATIONAL MARKETS INDICES

	Last Price	Daily %	YTD %	Δ10D Vol
World	1648.27	0.00%	4.42%	-1.19%
Developed	2806.07	0.00%	4.31%	-0.98%
Emerging	1357.6	0.00%	5.14%	-1.67%
Frontier	2515.52	0.00%	-2.95%	0.01%
Europe	140.6	0.00%	6.43%	-4.29%
Latin America	2323.04	0.00%	-5.25%	4.41%
Asia Pacific	208	0.00%	4.04%	-5.83%

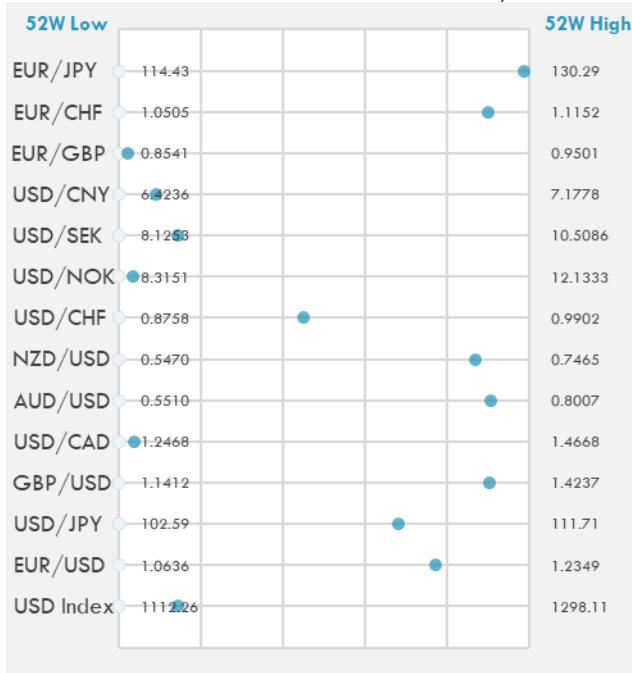
DEVELOPED VS EMERGING - 30 DAYS CHART

INTERNATIONAL EQUITY INDICES

	Last Price	Daily %	YTD %	Δ10D Vol
EuroStoxx 50	3845.64	0.00%	8.25%	-2.94%
FTSE 100	6736.96	0.00%	4.28%	-8.39%
CAC 40	6033.76	0.00%	8.69%	-3.73%
DAX	14569.39	0.00%	6.20%	-1.14%
Swiss SMI	10883.23	0.00%	1.68%	-1.99%
Nikkei 225	29682	1.61%	8.15%	-9.47%
CSI 300	5138.87	0.21%	-1.39%	3.34%

INTERNATIONAL EQUITY - 30 DAYS CHART


FOREIGN EXCHANGE MARKET

	Last Price	Daily %	Δ10D	Vol 25	ΔRR
Major USD Cross Rate					
USD Index	1138.9	0.26%	0.06%	-	
EUR/USD	1.1957	-0.24%	0.01%	-0.175	
USD/JPY	108.82	0.29%	0.01%	-0.120	
GBP/USD	1.3966	-0.18%	0.12%	-0.483	
USD/CAD	1.2553	0.16%	-0.94%	0.578	
AUD/USD	0.777	-0.26%	-0.85%	-0.918	
NZD/USD	0.7206	-0.29%	-0.35%	-1.020	
USD/CHF	0.9273	0.35%	-0.47%	0.345	
USD/NOK	8.4437	0.32%	-1.19%	1.523	
USD/SEK	8.4711	0.28%	0.06%	0.460	
USD/CNY	6.4927	-0.02%	-0.21%	0.200	
Major EUR Cross Rate					
EUR/GBP	0.85614	-0.07%	-0.02%	0.338	
EUR/CHF	1.10875	0.06%	-0.53%	0.533	
EUR/JPY	130.11	0.04%	-0.06%	-0.405	

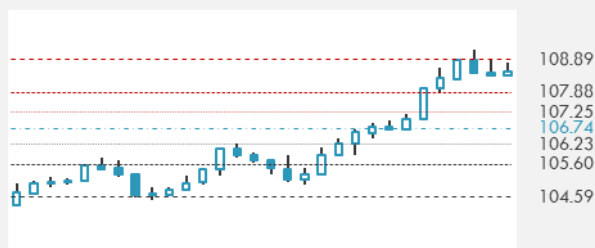
DISTANCE FROM 52 WEEKS LOW/HIGH


- Australian dollar trims its first weekly advance in three weeks, as modest advances in equity indexes and stock futures fall short of emulating recent correlations.
- The pound extended its winning streak after global risk appetite turned upbeat following a tame U.S. inflation report.

Source: Bloomberg, Financial Times, Reuters

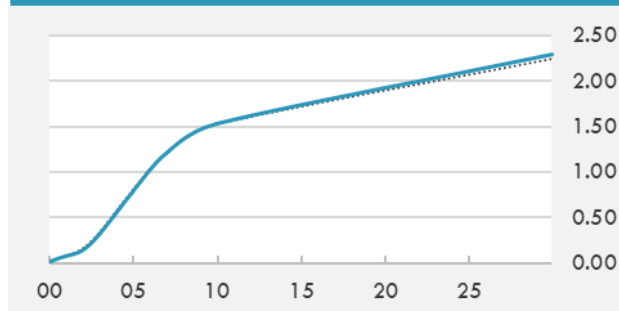
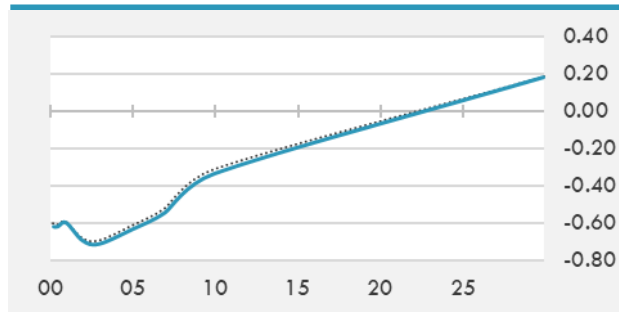
EUR/USD 30 DAYS SUPPORT & RESISTANCE

GBP/USD 30 DAYS SUPPORT & RESISTANCE

USD/JPY 30 DAYS SUPPORT & RESISTANCE

USD/CAD 30 DAYS SUPPORT & RESISTANCE


GLOBAL BOND INDICES

	Yield	ΔYield (in Bps)
Benchmark Indices		
US 10 Years Benchmark	1.537	0.019
EU 10 Years Benchmark	-0.334	-0.021
UK 10 Years Benchmark	0.735	0.021
Sovereign Bonds		
US Treasury Bond	0.594	0
Eurozone Sovereign Bond	-0.428	0
Japan Sovereign Bond	-0.104	0
Corporate Bonds		
US Corporate TR	2.222	-0.007
US High Yield Bond TR	4.318	-0.113
EUR Aggregate Corporate TR	0.345	-0.015
EUR High Yield TR	3.182	-0.098
USD Emerging Market IG & HY	3.888	-0.062

US TREASURIES YIELD CURVE

EUR GENERIC YIELD CURVE


- Treasuries ended Thursday mixed with the curve steeper, pivoting around a little-changed 7-year sector.
- Bunds hold their gains as Lagarde says that while headline inflation may increase in coming months, long-term inflation expectations remain subdued. In this context, the ECB has left its 2023 inflation forecast unchanged at 1.4%, which will underpin support to bunds.
- The rally in German bonds picks up steam, with long-dated yields more than 3 basis points lower. Italian bonds are gaining as well, with the 10-year yield down by almost 6 basis points.

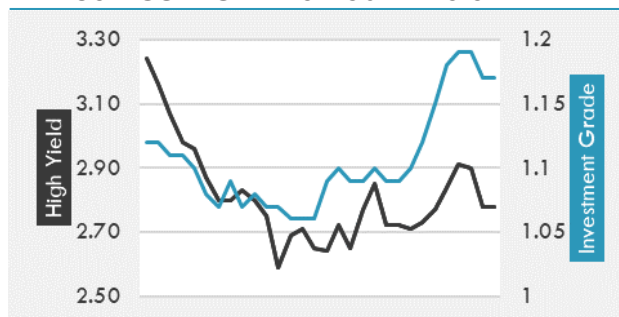
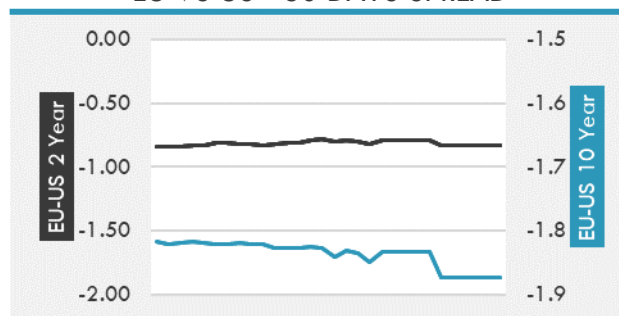
Source: Bloomberg, Financial Times, Economic times, Reuters

OVERNIGHT RATES - SWAPS

	Yield	ΔYield (in Bps)
3M USD LIBOR	0.184	0.000
3M EUR EURIBOR	-0.543	0.000
3M GBP LIBOR	0.077	0.000
3Y USD SWAP	0.424	0.009
5Y USD SWAP	0.881	0.013
10Y USD SWAP	1.560	0.034
30Y USD SWAP	1.999	0.074

FIXED INCOME SPREADS

	Spread	ΔSpread (in Bps)
USD 3M vs 10Y Spread	1.494	0.017
USD 2Y vs 10Y Spread	1.392	0.031
USD IG Spread	1.170	-0.020
USD HY Spread	2.780	-0.120
EU vs US 10Y Spread	-1.868	0.000
EU vs US 2Y Spread	-0.827	0.000
EM vs Benchmark Spread	269.400	-4.300

USD CORPORATES - 30 DAYS SPREAD

EU VS US - 30 DAYS SPREAD


GLOBAL COMMODITIES MARKET

	Last Price	Daily %
Commodity Index	86.04	-0.28%

Energy

WTI Crude Future	65.7	-0.48%
Brent Crude Future	69.4	-0.33%
NYMEX Gasoline	213.48	-0.15%
NYMEX Heat Oil	195.47	-0.24%
ICE Gasoil	548.5	0.00%
NYMEX Natural Gas	2.675	0.26%

Precious Metals

Gold Spot \$/Oz	1715.55	-0.41%
Silver Spot \$/Oz	25.8736	-0.95%
Platinum Spot \$/Oz	1201	0.02%
Palladium Spot \$/Oz	2345.76	-0.29%
Gold Future	1713	-0.56%
Silver Future	25.92	-1.04%
Platinum Future	1202	-0.02%
Palladium Future	2330	-0.50%

Base Metals

LME Aluminum	2178	0.00%
LME Copper	9058	0.00%
LME Zinc	2823	0.00%
LME Nickel	16239	0.00%
LME Lead	1943	0.00%
LME Tin	25900	0.00%

Agricultural

Corn CBT	534	-0.84%
Wheat CBT	642.75	0.04%
Soybeans CBT	1407.5	-0.42%
Bean Meal CBT	402.5	-0.57%
Rough Rice CBT	12.985	-0.23%
MDE Palm Oil	4132	1.77%
Soybean CBT	54.58	-0.05%
Coffee ICE	132.35	0.00%
Sugar #11 ICE	16.36	0.00%
Cotton #2 ICE	88.38	0.03%
Cocoa ICE	2593	0.00%
Ethanol CME	1.801	0.00%
Lumber CME	872	0.00%
Orange Juice ICE	115.15	0.00%
Live Cattle CME	119.675	0.00%
Feeder Cattle CME	146.4	0.00%
Lean Hogs CME	99.125	0.00%

COMMODITY INDEX SUPPORT & RESISTANCE

WTI OIL 30 DAYS SUPPORT & RESISTANCE


- U.S. oil drillers “in good position” to ramp up production later this year pose a risk to the OPEC+ alliance’s bet that higher crude prices won’t spur another shale boom, according to JPMorgan Chase & Co.
- Gold slipped to trim its first weekly advance in a month amid fluctuations in bond yields and the U.S. dollar.

Source: Bloomberg, Reuters

GOLD 30 DAYS SUPPORT & RESIENCE

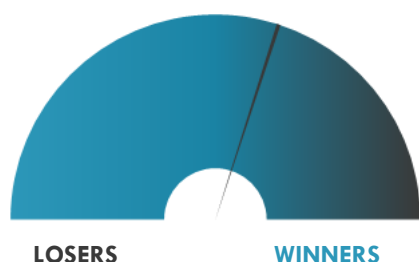
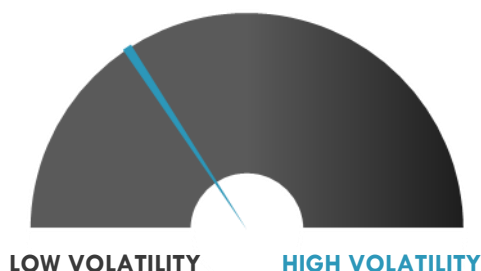
SILVER 30 DAYS SUPPORT & RESISTANCE


TOP 10 WINNERS

	Ticker	Last Price	Daily %
S&P 500 Stocks			
Freeport-McMoRan Inc	FCX	37.47	+8.73%
Enphase Energy Inc	ENPH	165.34	+8.47%
Etsy Inc	ETSY	220.84	+7.24%
Align Technology Inc	ALGN	544	+6.29%
Xilinx Inc	XLNX	126.09	+6.19%
ServiceNow Inc	NOW	502.87	+6.09%
Albemarle Corp	ALB	161.27	+5.89%
Qorvo Inc	QRVO	174.95	+5.79%
Twitter Inc	TWTR	68.46	+5.60%
Occidental Petroleum	OXY	30.98	+5.52%

TOP 10 LOSERS

	Ticker	Last Price	Daily %
S&P 500 Stocks			
General Electric Co	GE	12.27	-7.40%
Oracle Corp	ORCL	67.41	-6.53%
NVR Inc	NVR	4584.74	-4.01%
Sealed Air Corp	SEE	45.29	-3.33%
Verizon	VZ	55.51	-2.75%
Kraft Heinz Co/The	KHC	38.47	-2.63%
Westrock Co	WRK	51.39	-2.50%
WW Grainger Inc	GWV	386.67	-2.33%
Pinnacle West Capital	PNW	76.78	-2.14%
Williams Cos Inc/The	WMB	23.9	-2.05%

S&P 500 DISTRIBUTION

S&P VOLATILITY INDEX


- Aegion rose 4.2% in after hours trading after a report that PE firm Apollo Global made a rival bid for the company, topping a deal with New Mountain Capital made last month.
- Perspecta receives a follow-on award to provide technical services to the Defense Information Systems Agency for its Global Content Delivery Services (or GCDS) II program.
- MicroVision shares are currently up 2.5% after reporting in-line Q4 results with revenue of \$400,000 (down 91% Y/Y) and a \$0.02 loss per share.
- ExOne shares are down 3.3% after the 3D printing company reported a wider than expected loss per share of \$0.21 versus the \$0.17 loss consensus.
- Sientra announced that Paul Little is stepping down from his CFO, SVP & Treasurer position to pursue other opportunities, effective Mar.12.
- Aveo Oncology trades 1.4% down after hours on closing a \$20M drawdown under its earlier announced \$45M loan and security agreement with Hercules Capital and its affiliates.
- Domo shares are up 3.9% after hours following Q4 beats and mixed guidance that included an upside full-year revenue forecast.
- Novavax is surging with a 14% gain in the post market session after reporting encouraging final analysis of the data from its late-stage COVID-19 trial conducted in the United Kingdom.
- Zuora tops Q4 estimates with \$79.3M in revenue, up 13% on the year and about \$3.3M ahead of estimates, and a \$0.02 loss per share, three cents better than expected.
- Super League Gaming is 6.3% lower after hours following Q4 earnings where its revenues nearly tripled but fell short of some lofty projections.

KEY ECONOMIC INDICATORS

Country	Event	Surv (M)	Actual	Prior	Time
Canada	Unemployment Rate	9.20%	--	9.40%	15:30
Canada	Net Change in Employment	75000	--	-212800	15:30
Germany	CPI YoY	1.30%	--	1.30%	9:00
Germany	CPI MoM	0.70%	--	0.70%	9:00
Germany	CPI EU Harmonized YoY	1.60%	--	1.60%	9:00
Germany	CPI EU Harmonized MoM	0.60%	--	0.60%	9:00
Ireland	Property Prices MoM	--	--	0.80%	13:00
Latvia	Trade Balance	--	--	-2.61E+08	13:00
Spain	CPI YoY	0.00%	--	0.00%	10:00
Spain	CPI EU Harmonised YoY	-0.10%	--	-0.10%	10:00
Spain	Retail Sales YoY	--	--	-0.60%	10:00
Spain	CPI MoM	-0.60%	--	-0.60%	10:00
Spain	CPI EU Harmonised MoM	-0.60%	--	-0.60%	10:00
United Kingdom	Industrial Production MoM	-1.00%	--	0.20%	9:00
United Kingdom	Manufacturing Production MoM	-1.00%	--	0.30%	9:00
United Kingdom	Trade Balance GBP/Mn	-4.56E+09	--	-6.20E+09	9:00
United Kingdom	Industrial Production YoY	-4.40%	--	-3.30%	9:00
United Kingdom	Monthly GDP (3M/3M)	-2.60%	--	4.10%	9:00
United States	U. of Mich. Sentiment	78.5	--	76.8	17:00
United States	PPI Final Demand MoM	0.50%	--	1.30%	15:30

Source: Bloomberg

Banque BEMO sal

Head Office - Private and Corporate Banking

Elias Sarkis Ave., Bemo Bldg , Ashrafieh - Lebanon
Tel: +961 1 200 505 Fax: +961 1 217 860

Research & Development research@bemobank.com

Elias Sarkis Ave., Bemo Bldg , Ashrafieh - Lebanon
Tel: +961 1 200 505 Fax: +961 1 217 860

Disclaimer:

This report is published for information purposes only. The information herein has been compiled from, or based upon sources considered to be reliable (Bloomberg, SeekingAlpha, DailyStar...), but we do not guarantee or assume responsibility for its completeness and accuracy. This document should not be construed as a solicitation to take part in any investment, or as constituting any representation or warranty on our part. This report is not to be relied upon in substitution for the exercise of specialists.

We may not have taken any steps to ensure that the securities referred to in this report are suitable for any particular investor. The investments and services contained or referred to herein are not purported to be exhaustive, any person considering an investment should seek specialist advice on the suitability of an investment.

Nothing in this report constitutes investment, legal, accounting or tax advice, or a representation that any investment or strategy is suitable or appropriate to your individual circumstances, or otherwise constitutes a personal recommendation. Clients understand that it is their responsibility to seek legal and/or tax advice regarding the legal and tax consequences of their investment transactions. The consequences of any action taken on the basis of information contained herein are solely the responsibility of the recipient.

Investment instruments are subject to risk, including possible loss of principal amount invested. Past performance should not be taken as an indication or guarantee of future performance, and no representation or warranty, express or implied, is made regarding future performance. The value of securities and financial instruments is subject to exchange rate fluctuation that may have a positive or adverse effect on the price or income of such securities or financial instruments. Some investments mentioned in this report may have a high level of volatility. High volatility investments may experience sudden and large falls in their value causing losses when that investment is realized. Some investments may not be readily realizable and it may be difficult to sell or realize those investments, similarly it may prove difficult to obtain reliable information about the value, or risks, to which such an investment is exposed.

This report may provide the addresses of websites or references. We have not reviewed any such site and takes no responsibility for the content contained therein. Such address or reference is provided solely for convenience and information. Accessing such website through this report shall be at the recipients own risk.